

# The Wish List



## GELBVIEH SALE

SATURDAY  
**DECEMBER 1, 2012**

7:00 P.M.

PONOKA AG EVENT CENTRE  
PONOKA, AB



*Celebrating  
40 Years*

Held in conjunction with the Gelbvieh Association of Alberta & BC Annual Meeting

*Hosted by: Gelbvieh Association of Alberta & BC*


**Don Savage Auctions**


108 Flett Drive, Airdrie, Alberta T4B 1N2  
 Phone: 403/948-3520 Fax: 403/948-2917  
 Website: [www.donsavageauctions.com](http://www.donsavageauctions.com)  
 Email: [don@donsavageauctions.com](mailto:don@donsavageauctions.com)



**AUCTIONEER & SALE MANAGERS WELCOME**

Welcome to the 2012 Wish List Sale sponsored by the Gelbvieh Association of Alberta/BC. If you are looking for those extra special genetics combined with outstanding quality the Wish List offering is sure to have the answer.

I have selected the right kind of cattle from the top end of some of the best Gelbvieh breeders in the industry. This event will set the pace and grab the enthusiasm of the Gelbvieh industry. Selling will be an awesome set of bred heifers that are keepers in their respective herds; a fantastic group of calendar year heifer calves and a flush opportunity from top National Champion Female genetics.

After an early harvest across the prairies and record setting cattle markets, for the past year, you will be able to enjoy the opportunity to visit old friends and make new acquaintances at the beautiful Ponoka Ag Event Centre. It is a great time to be in the cattle industry with unheard of prices in the commercial market and very successful Bull Sales this past spring. It is the success of the commercial industry that makes the seed-stock industry tick. This is your opportunity to make the most of your buying opportunities this fall. This is the 40th Anniversary of Gelbvieh. A lot has happened over those 40 years, the advancement of the breed and the widespread acceptance of the breed in the commercial herds. Thank you to the pioneers of Gelbvieh who made this all possible.

If you are unable to attend the Sale, but wish to make a purchase, please feel free to contact any of the sales staff or Don Savage Auctions and your order will be handled in a professional manner.

Sincerely,  
Don Savage

*~ List of Consignors ~*

- BEAMISH LAND & CATTLE** ~ Calvin & Donna Beamish .....Box 53, Jarvie, AB T0G 1H0  
Phone: 780/954-2285 farmer56@mcsnet.ca
- BIRCH**, Aaron .....Box 192, Lomond, AB T0L 1G0  
Phone: 403/485-5518 aaron@tbfarms.ca
- BRITAIN FARMS** ~ Kelly & Colleen Britain .....RR #1, Falun, AB T0C 1H0  
Phone: 780/352-0676 britt4@xplornet.com
- DANE RANCH** ~ Romacordelia Cox .....P.O. Box 11, Tatla Lake, BC V0L 1V0  
Phone: 250/709-8625 cordy\_cox@hotmail.com
- FOURSQUARE GELBVIEH** ~ Roger D. & Kim Sayer .....RR #2, Box 15, Site 6, Carstairs, AB T0M 0N0  
Phone: 403/337-5847 rogerandkimsayer@yahoo.ca
- GOLD BAR GELBVIEH** ~ Joyce Dawson .....Box 1616, Vanderhoof, BC V0J 3A0  
Phone: 250/570-9179 halfwayranch2000@hotmail.com
- JONUS CATTLE** ~ Joe Ness .....#74, 115 Bergen Road N.W., Calgary, AB T3K 1P2  
Phone: 403/852-7332 jonus@telus.blackberry.net
- KERINESS CATTLE COMPANY LTD.** ~ Kert Ness .....Box 8, Site 7, RR #1, Airdrie, AB T4B 2A3  
Phone: 403/948-3282 kertness@shaw.ca
- ROCKY TOP GELBVIEH** ~ Cody Congdon .....Box 251, Mirror, AB T0B 3C0  
Phone: 403/350-5791 rockytopgelbvieh@hotmail.com
- TOWERVIEW RANCH** ~ Gary & Judy Pahl .....Box 331, Medicine Hat, AB T1A 7G1  
Phone: 403/548-7150 garypahl@shockware.com
- TWIN BRIDGE FARMS LTD.** ~ Ron & Carol Birch .....Box 192, Lomond, AB T0L 1G0  
Phone: 403/792-2123 twinbridgefarms@wildroseinternet.com
- V & V FARMS** ~ Vern & Vivienne Pancoast .....Box 37, Redcliff, AB T0J 2P0  
Phone: 403/548-6678 vvfarms@xplornet.com

# The Wish List

## GELBVIEWH SALE

**SATURDAY DECEMBER 1, 2012 7:00 P.M.**  
**PONOKA AG EVENT CENTRE, PONOKA, AB**

- Selling*
- *Bred Purebred Females*
  - *2012 Purebred Heifer Calves*
  - *Flush Opportunities*

ALL SALE CATTLE ARE DNA PARENTAGE VERIFIED

### *General Information*

TERMS OF SALE: Are cash or cheque at par, payable to the clerks of the Sale on sale day. U S funds will be accepted at the current rate of exchange. No release will be given until satisfactory settlement has been made. Full payment shall constitute a final sale and then registration papers will be transferred.

HEALTH: All Sale cattle meet the Canadian Health standards. Foreign buyers are responsible for knowing the current Health standards of their country.

GUARANTEE: All Sale cattle are guaranteed under the terms and conditions of Sale as recommended by the Canadian Gelbvieh Association.

MAIL BIDS: If you are unable to attend the Sale, but wish to make a purchase, please feel free to contact any of the Sales Staff or Don Savage Auctions and your order will be handled in a professional manner.

INSURANCE: Ownership commences to the purchaser as soon as the animal is sold. Insurance agents will be present sale day to look after your insurance requirements.

Although every precaution will be taken to protect the safety and comfort of the buyers neither Don Savage Auctions nor the consignors assume any responsibility in these matters and disclaims any liability, legal or otherwise, in the event of an accident or loss of property.

### *Sales Staff*

Don Savage, Auctioneer .....403/948-3520  
Rod McLeod, Ringman.....403/540-7986  
Robert Lind, Ringman.....780/542-0123

**SALE DAY PHONE**  
**403/803-4434 (CELL)**

### *Special Representatives*

Scott Severtson, President ~ Canadian Gelbvieh Association  
Wendy Belcher, Secretary ~ Canadian Gelbvieh Association  
Cordy Cox, President ~ Gelbvieh Association of Alberta/BC

### *Accommodations*

SUPER 8 ~ Ponoka.....403/704-1177  
PONOKA STAMPEDE INN.....403/783-5535

Visit Don Savage Auctions Website  
[www.donsavageauctions.com](http://www.donsavageauctions.com)

*For further information contact*



108 Flett Drive, Airdrie, Alberta T4B 1N2  
Phone: 403/948-3520 Fax: 403/948-2917  
Email: [don@donsavageauctions.com](mailto:don@donsavageauctions.com)



# The Wish List Sale 2012

## ~ Bred Yearling Heifers ~

### 1



LOT 1 - AWB BIRCH'S SASSY 1Y

Black Polled Purebred Bred  
**AWB BIRCH'S SASSY 1Y**

01/12/2011 AWB 1Y CDGV142520

JRI TOP GRID 254T725

JRI TOP SECRET 253M75 ET  
JRI MSEXTRAIMPRESSD254P625ET

DF SASSY 29U

SLC MASTER PLAN 134N  
DF SASSY PADDY 11S ET

ACT. BW	ADJ. WW	ADJ. YW	CE	BW	WW	YW	MILK	TM	GL	CED	SC
84	577		108 .21	0.8 .35	32 .28	66 .18	17 .10	33	-0.3 .34	101 .9	-0.1 .15

**CONSIGNOR: AARON BIRCH - LOMOND, AB**

A I April 19, 2012 to FRL FIR RIVER EXPOSURE 8U ET.

P/E May 11 to July 10, 2012 to FRL FIR RIVER EXPOSURE 8U ET

Due late February / early March.

Sassy is a powerful double black female that is sure to produce some powerhouse bull calves. It is hard to find the combination of performance and calving that this bred heifer has. She has a stacked pedigree on both sides. Her dam is sired by the breed changing Masterplan and is from the JRI Ms Paddy cow family. She is turning into a very productive young female and will be a big part of our black program in the future. Her sire is the high selling bull from Judd Ranch's 2008 bull sale.

### 2



LOT 2 - SA BIRCH'S DAISY 9Y

Polled Purebred Bred  
**SA BIRCH'S DAISY 9Y**

01/22/2011 SA 9Y CDGV142402

OWEN BIRCH'S RICCO 154W

VV TIREE 150T  
AWB BIRCH'S MACY 39S

SA BIRCH'S DAISY 16U

JRI HEAVY EQUIPMENT 125M3  
SA BIRCH'S DAISY 50S

ACT. BW	ADJ. WW	ADJ. YW	CE	BW	WW	YW	MILK	TM	GL	CED	SC
58	459		104 .1	3.7 .1	49 .1	87 .1	18 .1	43	-0.6 .1	102 .1	0.3 I

**CONSIGNOR: TWIN BRIDGE FARMS LTD - LOMOND, AB**

A I April 18, 2012 RWG TOTALLY EXPOSED 7918 ET

P/E May 20 to July 10, 2012 to RWG TOTALLY EXPOSED 7918 ET

Safe to her April 18, 2012 A I

Daisy 9Y is a fancy, broody, moderate made female that has foundation female written all over her. We have already retained three daughters from her young dam including 9Y's twin sister. She combines two sires, Ricco and Heavy Equipment, that we are using to improve both performance and maternal traits in our program. Her mating to Totally Exposed should be a perfect match for this promising female.

### 3



LOT 3 - AWB BIRCH'S UPTOWN GIRL 19Y

Polled Purebred Bred  
**AWB BIRCH'S UPTOWN GIRL 19Y**

01/25/2011 AWB19Y CDGV142534

WV TIREE 150T

DEG PESO 286P  
DTJ FANCY NANCY 506N

MGF R.H. CLASSY LADY 22W

OSF ROADHAMMER 1R  
MGF CLASSY LADY 97M

ACT. BW	ADJ. WW	ADJ. YW	CE	BW	WW	YW	MILK	TM	GL	CED	SC
88	633		108 .22	2.8 .33	44 .25	80 .10	19 .6	41	-1.0 .30	106 .7	0.1 .9

**CONSIGNOR: AARON BIRCH - LOMOND, AB**

A I April 18, 2012 to FRL FIR RIVER EXPOSURE 8U ET

P/E April 23 to July 10, 2012 to SA BIRCH'S OFF ROAD 160Y

Safe to her April 18, 2012 A I

Uptown Girl 19Y exhibits a tremendous amount of volume length and thickness in a dark red wrapper. Her sire has produced some incredible daughters in our program. They produce offspring that exceed themselves and are very easy fleshing and fertile. 19Y's dam was purchased at Agribition and traces back to the powerful MGF UPTOWN GIRL 1E ET that has left her own legacy in the Gelbvieh breed. We are confident this female will be in high demand at the 2012 Wish List Sale.

# The Wish List Sale 2012



4

## SA BIRCH'S FAITHFUL 46Y

Polled Purebred Bred

02/08/2011 SA 46Y CDGV142342

DVE DAVIDSON MOMAMIA 105U

DVE DAVIDSON SURE'LUC 128S  
DVE DAVIDSON MS JULIO 23P

SA BIRCH'S FAITHFUL 93S

VV MEGALITH 26M  
SA BIRCH'S FAITHFUL 20M

ACT. BW	ADJ. WW	ADJ. YW	CE	BW	WW	YW	MILK	TM	GL	CED	SC
80	530		113 .18	0.3 .34	35 .26	62 .8	17 .8	35	-0.8 .6	102 .5	0.4 .8

CONSIGNOR: TWIN BRIDGE FARMS LTD - LOMOND, AB

A I April 20, 2012 to VV TIREE 150T

P/E April 23 to August 3, 2012 to SA BIRCH'S TRIXTER 15X and SA BIRCH'S SPARTACUS 91Y

Safe to her April 20, 2012 A I

Faithful 46Y is an eye catching female that with a great set of balanced traits. She has calving ease, performance and maternal traits combined with near flawless conformation. Her dam if from our dependable Faithful cow family and has yet to miss. She has already produced a daughter we have retained in our program, our 2010 GAAB/BC donation heifer and one of the top bull calves in our pen this year. Her sire has produced progeny with the same low birth weights and high weaning weights as 46Y.



LOT 4 - SA BIRCH'S FAITHFUL 46Y

5

## KCC YES YOUR HIGHNESS 24Y

Black Polled Purebred Bred

01/11/2011 KCC 24Y CDGV143791

TVR ULTRASONIC 9U

TVR SHIVER AND SHAKE 5S  
DTJ SWEET AMANDA S95

STON MISS COUNTESS 12U

ORM BUDWISER 59S  
VG VALLEY MISS 26N

ACT. BW	ADJ. WW	ADJ. YW	CE	BW	WW	YW	MILK	TM	GL	CED	SC
97	652	1023	102 .15	3.4 .31	49 .23	90 .16	19 .5	44	0.4 .6	100 .4	0.3 .3

CONSIGNOR: KERINNESS CATTLE CO LTD - AIRDRIE, AB

P/E March 27 to June 30, 2012 to EV KANSAS 50Y

KCC Yes Your Highness 24Y is a very exciting, thick, deep made, structurally correct black bred heifer that has become a very complete young female. Her dam was purchased from Stone Gate Farm and has definitely fulfilled her duties at Keriness. 24Y has loads of potential with her mating to EV Kansas 50Y. If calving in January or February isn't in your program the Ness's will calve her out and keep her for 30 days after calving.



LOT 5 - KCC YES YOUR HIGHNESS 24Y

6

## JOE COME IN THE WHISKEYS FINE

Polled Purebred Bred

01/17/2011 JOE 419Y CDGV142704

DVE DAVIDSON TEX 106W

CK REMINGTON 89R  
DVE DAVIDSON MS RED WRAP 73P

FLAD WHISKEY GIRL 116W

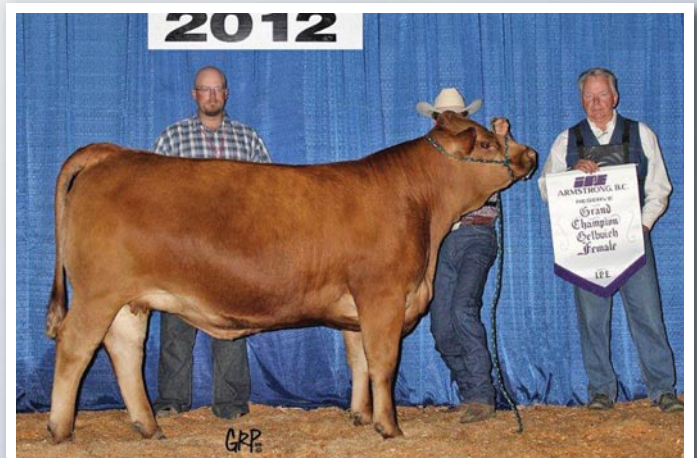
WRS SILENT STAN 20S  
FLAD SUMMER 26S

ACT. BW	ADJ. WW	ADJ. YW	CE	BW	WW	YW	MILK	TM	GL	CED	SC
91	678	1036	113 .18	3.3 .31	47 .22	85 .11	22 .6	46	0.2 .6	105 .5	0.7 I

CONSIGNOR: JONUS CATTLE - CALGARY, AB

P/E March 27 to July 15, 2012 to CK SUPERIOR 96X

JOE 419Y is one of the most attractive females that the Ness's have produced; her dam was the 2010 Agribition Sweetheart Classic Champion Female. This was a tough decision to part with this full bodied broody female. She will go on to produce top quality feedstock within the breed. 419Y will calve early and the Ness's will keep her and calve her out in the new year. Reserve Grand Champion Female at the 2012 IPE.



LOT 6 - JOE COME IN THE WHISKEYS FINE

Gelbvieh  
40 Years

# The Wish List Sale 2012

7



LOT 7 - VV YUR A GOLD STAR 79Y

Polled Purebred Bred  
**VV YUR A GOLD STAR 79Y**

02/04/2011 VV 79Y CDGV143606

**ATC GOLD STAR POLLED 5D**

CZM FAIRYVALE XCELERATOR 1X  
ATC GOLD STAR ET 92A

**VV PEREDUR 90P**

VV BOODOM 5M  
JC PEMBINA LESLEY 609L

ACT. BW	ADJ. WW	ADJ. YW	CE	BW	WW	YW	MILK	TM	GL	CED	SC
90	523	728	106 .23	1.4 .36	39 .24	72 .18	13 .16	33	-2.4 .33	104 .15	-0.1 I

**CONSIGNOR: V&V FARMS - REDCLIFF, AB**

*A I April 26, 2012 to V V ULTRAMATIC 144U*

*P/E April 29 to July 5, 2012 to SLC TOUCHDOWN 66W, SLC TOUCHDOWN 82W and RED BLAIR'S SQUALL 981W*

*V V 79Y is an extremely attractive made feminine daughter of the great ATC Gold Star Polled 5D - a sire who has made a tremendous impact benefiting the prominence of the Gelbvieh breed. 79Y's dam is a direct daughter of the consistent producing sire VV Boodom 5M. This gal's pedigree is stacked with calving ease, performance and profitability.*

8



LOT 8 - VV YOPLAIT 121Y

Polled Purebred Bred  
**VV YOPLAIT 121Y**

02/10/2011 VV 121Y CDGV143475

**FRL FIR RIVER RANALDO 38U**

JHL LCHMN CHRONICLE 8011H  
FRL FIR RIVER CHERRY 73R

**VV SUGAR TREAT 126T ET**

VV RALLY LOU 16R  
GCC RED SUGAR 59K

ACT. BW	ADJ. WW	ADJ. YW	CE	BW	WW	YW	MILK	TM	GL	CED	SC
82	526	718	105 .17	1.0 .31	35 .22	69 .10	19 .8	37	-0.7 .11	100 .7	0.4 .6

**CONSIGNOR: V&V FARMS - REDCLIFF, AB**

*A I April 26, 2012 to JRI TOP RECRUIT*

*P/E April 29 to July 5, 2012 to SLC TOUCHDOWN 66W, SLC TOUCHDOWN 82W and RED BLAIR'S SQUALL 981W*

*VV 121Y is a very well put together daughter of Fir River Ranaldo who features the awesome genetics of Leachman Chronicle and JCGR Bar G T Louie. Her dam is an ET daughter carrying the top maternal genetics of the Red Sugar 59K female and the performance of Rally Lou. These bloodlines work very well throughout the industry.*

9



LOT 9 - VV YOU GOT IT BABY 137Y

Polled Purebred Bred  
**VV YOU GOT IT BABY 137Y**

02/16/2011 VV 137Y CDGV144086

**VV WHISTLE 87W**

VV TIZIANO 151T  
VV RAMBLIN' ROSE 56R

**BLB GOODVIEW KAYCEE 18S**

BLB GOODVIEW PLD HOLMAN 14N  
DTJ MISS KAYCEE 511M

ACT. BW	ADJ. WW	ADJ. YW	CE	BW	WW	YW	MILK	TM	GL	CED	SC
86	353	980	107 .16	1.0 .31	20 .21	47 .9	20 .6	30	0.2 .11	103 .4	-0.1 .3

**CONSIGNOR: V&V FARMS - REDCLIFF, AB**

*A I April 26, 2012 to JD PD MOVADO 407T*

*P/E April 29 to July 5, 2012 to SLC TOUCHDOWN 66W, SLC TOUCHDOWN 82W and RED BLAIR'S SQUALL 981W*

*VV 137Y is a very fancy feminine daughter of VV Whistle 87W who includes the highly sought after genetics of VV Tiziano and EGL Pabst. Her dam who was bred in the Goodview program continues to raise the exciting calves. A maternal sister to 137Y sold at the 2011 Wish List Sale to Gail Birch - Lomond, AB.*

# The Wish List Sale 2012



## 10

### Polled 75% Bred VV YOU'RE STILL RANDI 230Y

03/31/2011 VV 230Y CDGV143639

VCR SIX PACK 25S

DL JEN-TY RAMBO 205P  
VV LOIS 21L

LTC GOLD STAR 204F

VV RANDI-LEE 23R

ACT. BW	ADJ. WW	ADJ. YW	CE	BW	WW	YW	MILK	TM	GL	CED	SC
82	558	806	113 .17	-1.0 .34	35 .26	66 .20	15 .7	33	-0.7 .7	103 .6	0.0 .3

**CONSIGNOR: V&V FARMS - REDCLIFF, AB**

*A I April 26, 2012 to JDPD ASTRO 407S*

*P/E April 29 to July 5, 2012 to SLC TOUCHDOWN 66W, SLC TOUCHDOWN 82W and RED BLAIR'S SQUALL 981W*

*VV 230Y is a very stout made daughter of VCR Six Pack 25S, a sire who has been used with great success at V & V Farms. His sons make their impact at V & V Farm's Annual Bull Sale. Check out this young female's great EPDs.*



LOT 10 - VV YOU'RE STILL RANDI 230Y

## 11

### Black Polled Purebred Bred TVR TOWERVIEW YOLANDA 116Y

02/13/2011 TVR 116Y CDGV142319

TVR WEAVER 6W

JRI FULLY EXPOSED 270N83  
WJW DOUBLE U JOLENE 760T

TVR STAR 2S

TAU DR PEPPER 29D  
VV PANDORA 16P

ACT. BW	ADJ. WW	ADJ. YW	CE	BW	WW	YW	MILK	TM	GL	CED	SC
85	650	844	107 .19	1.8 .33	49 .25	82 .20	17 .9	42	-0.9 .10	101 .7	0.7 .7

**CONSIGNOR: TOWERVIEW RANCH - MEDICINE HAT, AB**

*A I May 24, 2012 to COLB MR XAVIER X812*

*P/E May 25 to August 13, 2012 to DL JEN-TY KING PINE 13Y and TVR TOWERVIEW YANKEE 123Y*

*Towerview Yolanda is a very good example of what TVR Weaver 6W is doing in our program. She combines style and structure in a compact package. This will be a rare opportunity to buy a female bred to Xavier, a bull that Towerview think was the best in the barn at Denver in 2010.*



LOT 11 - TVR TOWERVIEW YOLANDA 116Y

## 12

### Polled Purebred Bred CK SHAKRA 15Y

02/05/2011 CK 15Y CDGV143234

ULL SALVADOR 43W

VV SALVADOR 37S  
ULL GOLDEN LADY 7T

CK DEVIL WEARS PRADA 53W

RWG TARGET 7102  
CK 23T

ACT. BW	ADJ. WW	ADJ. YW	CE	BW	WW	YW	MILK	TM	GL	CED	SC
71	594		114 .21	-1.6 .32	36 .13	66 .7	15 .4	33	-1.5 .7	103 .5	

**CONSIGNOR: BRITAIN FARMS - FALUN, AB**

*P/E April 29 to September 12, 2012 to DL JEN-TY FEARLESS 41Y*

*CK Shakra 15Y is a thick made, deep sided, moderate framed daughter of ULL Salvador. Her dam 53W is an awesome RWG Target daughter, a son of the renowned RWG Royal Reserve. You are going to really appreciate the quality in this package.*



LOT 12 - CK SHAKRA 15Y

# The Wish List Sale 2012

## ~ Calendar Year Heifer Calves ~



LOT 13 - AWB BIRCH'S WRUFFLE 19Z ET

13 Choice

Black Polled Purebred Heifer Calf  
**AWB BIRCH'S WRUFFLE 19Z ET**

01/28/2012 AWB 19Z CDGV144753

SPUR BERETTA 703G

JEB POLLED GIZMO 17Z  
SPUR VANESSA 19E ET

VV WRUFFLE ME 18W

GAA GARST LEACHMAN C3485  
DF TRUFFLE 22T ET

ACT. BW	ADJ. WW	ADJ. YW	CE	BW	WW	YW	MILK	TM	GL	CED	SC
88	668		107 .1	0.4 .1	37 I	67 .1	18 .1	36	-2.9 .1	102 .1	0.5 I

14 Choice

Polled Purebred Heifer Calf  
**SA BIRCH'S WRUFFLE 47Z ET**

02/06/2012 SA 47Z CDGV144816

SPUR BERETTA 703G

JEB POLLED GIZMO 17Z  
SPUR VANESSA 19E ET

VV WRUFFLE ME 18W

GAA GARST LEACHMAN C3485  
DF TRUFFLE 22T ET

ACT. BW	ADJ. WW	ADJ. YW	CE	BW	WW	YW	MILK	TM	GL	CED	SC
94	643		107 .1	0.4 .1	37 I	67 .1	18 .1	36	-2.9 .1	102 .1	0.5 I

*Selling Choice - Lot 13 or Lot 14*



LOT 14 - SA BIRCH'S WRUFFLE 47Z ET



VV WRUFFLE ME 18W - DAM OF LOTS 13 & 14

CONSIGNOR: TWIN BRIDGE FARMS LTD - LOMOND, AB

Here is a pair of sisters that we are really proud of. We have debated since these two were born which was better so to lay our debate to rest we are offering a choice of these stand out females. We selected heir dam when we purchased the pick of V&V Farms' 2009 heifer calves. She has a very interesting pedigree with the out cross C3485 as her sire and the great donor dam AR JENNY 47P as her grand dam. Wruffle has turned into a tremendous female and will continue to be a big part of our breeding program in the future. Their sire Beretta was the 1998 NWSS Bull Futurity Champion and has really impressed us with the limited progeny we have had from him. A son from him will be in our show string this fall. Both heifers have the same femininity correctness and volume as their dam. 19Z is the black, higher performing and longer made sister while 47Z is the dark red, softer made and more eye catching of the two. Watch for these ET sister as well as Wruffle 18W's bred heifer at Agribition.



LOT 15 - AWB BIRCH'S GYPSY 44Z

15

Polled Purebred Heifer Calf  
**AWB BIRCH'S GYPSY 44Z**

02/05/2012 AWB 44Z CDGV144813

JCGR BAR GT LOUIE 2J

GKT BUD 11G  
049C

AWB BIRCH'S GYPSY 42R

TJB VORTEX 232M ET  
JC PEMBINA GYPSY 86G

ACT. BW	ADJ. WW	ADJ. YW	CE	BW	WW	YW	MILK	TM	GL	CED	SC
92	631		103 .24	1.5 .36	37 I+	69 .19	17 .19	36	-1.1 .35	99 .16	0.2 I

CONSIGNOR: AARON BIRCH - LOMOND, AB

Gypsy 44Z is an incredibly fancy eye catching heifer calf with a ton of potential. It is with great reluctance that we offer a daughter of Gypsy 42R for sale. She has been a top producer for us and has achieved Dam of Merit status just like her dam. This cow family can really produce herd sires including 42R's grandson AWB Birch's Mastercraft 43Y who lead off our 2012 bull sale and 42R's brother the 2002 People's Choice Champion Bull JC Pembina McLeod 86M. This cow family combined with the dependability of Louie has resulted in a female that can really make a difference in someone's breeding program.

Gelbvieh  
40 Years



# The Wish List Sale 2012



## 16

Polled Purebred Heifer Calf  
**FRSQ MISS SILVER 26Z**

01/24/2012 FRSQ 26Z CDGV146530

JRI HOME BREW 213W67 ET

JRI TOP SECRET 253M75 ET  
 JRI MS PLD GRAND PRIX 213G57

VV SILVER MIST 29S

JCGR BAR GT LOUIE 2J  
 VV LUCIOUS 4L

ACT. BW	ADJ. WW	ADJ. YW	CE	BW	WW	YW	MILK	TM	GL	CED	SC
84			108	1.0  +	36	69	16	33	-2.3	104	0.5

CONSIGNOR: FOURSQUARE GELBIEH - CARSTAIRS, AB

There will be a lot of heads turned to look on sale day as all breeders will start to appraise the quality of FRSQ Miss Silver 26Z. Her sire, JRI Home Brew, is a calving ease specialist yet still providing excellent performance with loads of substance and eye appeal. 26Z's dam, VV Silver Mist 29S, was the high selling female at the 1st Gelbvieh Showcase Sale and she has never disappointed. This young prospect has it all and will be one of the great ones to run in the front pasture.



LOT 16 - FRSQ MISS SILVER 26Z

## 17

Polled Purebred Heifer Calf  
**FRSQ MISS PATTY'S BREW 31Z**

01/27/2012 FRSQ 31Z CDGV146534

JRI HOME BREW 213W67 ET

JRI TOP SECRET 253M75 ET  
 JRI MS PLD GRAND PRIX 213G57

FRSQ FOURSQUARE PATRICIA 69P

OAR MO-ROC MONTGOMERY 7M  
 FRSQ LYDIA 1K

ACT. BW	ADJ. WW	ADJ. YW	CE	BW	WW	YW	MILK	TM	GL	CED	SC
76			109	-0.3  +	31	63	12	27	-1.8	100	0.3

CONSIGNOR: FOURSQUARE GELBIEH - CARSTAIRS, AB

FRSQ 31Z is another extremely fancy JRI Home Brew daughter with a great future. The Home Brew calves at Foursquare Gelbvieh are a standout. His dam is one of the top donor calves at Judds. Check out 31Z's EPDs.



LOT 17 - FRSQ MISS PATTY'S BREW 31Z

## 18

Polled Purebred Heifer Calf  
**FRSQ FOURSQUARE GINGER 95Z**

03/25/2012 FRSQ95Z CDGV147133

JRI HOME BREW 213W67 ET

JRI TOP SECRET 253M75 ET  
 JRI MS PLD GRAND PRIX 213G57

FRSQ FOURSQUARE UNITY 42U

FRSQ FOURSQUARE NICKLEBACK  
 FRSQ FOURSQUARE PAULINE 29P

ACT. BW	ADJ. WW	ADJ. YW	CE	BW	WW	YW	MILK	TM	GL	CED	SC
85	659		113	0.1  +	27	57	15	28	-1.7	103	0.5

CONSIGNOR: FOURSQUARE GELBIEH - CARSTAIRS, AB

FRSQ 95Z is a long bodied complete feminine package with excellent genetics on both the top and bottom of her pedigree. You cannot go wrong adding these high quality bloodlines into your herd.



LOT 18 - FRSQ FOURSQUARE GINGER 95Z

Gelbvieh  
 40 Years

# The Wish List Sale 2012



LOT 19 - BLC ZAHARA 8Z

## 19

Polled Purebred Heifer Calf  
**BLC ZAHARA 8Z**

02/18/2012 BLC 8Z CDGV146838

VV PESO 63T

DEG PESO 286P  
ATC GOLD STAR PLD JUSTINE 6J

BLC SASHA 228S

VV MEREDUDD 49M  
BLC KITTY 228K

ACT. BW	ADJ. WW	ADJ. YW	CE	BW	WW	YW	MILK	TM	GL	CED	SC
92			107	0.4	30	59	22	37	-1.4	100	0.1

CONSIGNOR: BEAMISH LAND & CATTLE - JARVIE, AB

*BLZ Zahara 8Z has so much to offer. She is thick made, deep, has a great hair coat and a wonderful disposition. She is the whole package. 8Z is sired by VV Peso 63T, a bull that is doing an awesome job at Beamish's and she is out of the 228S female - one of their best.*



LOT 20 - BLC ZAZIE 119Z

## 20

Polled Purebred Heifer Calf  
**BLC ZAZIE 119Z**

03/31/2012 BLC 119Z CDGV146828

VV WINTER STAR 42W

ATC GOLD STAR POLLED 5D  
TSCC TWIN STAR ROXANDRA 329R

BLC TINA 116T

VV MEREDUDD 49M  
BLC JOHANNA 116J

ACT. BW	ADJ. WW	ADJ. YW	CE	BW	WW	YW	MILK	TM	GL	CED	SC
92			112	-0.9	30	59	14	29	-1.6	103	0.0

CONSIGNOR: BEAMISH LAND & CATTLE - JARVIE, AB

*BLC Zazie 119Z is a thick, classy female that will compliment any herd. This daughter of VV Winter Star 452W and BLC 116T is deep red just like her dam. Her dam has an excellent disposition and udder. If you are looking for the every popular dark cherry red colour 119Z may be the one.*



LOT 21 - BLC ZIZI 230Z

## 21

Polled Purebred Heifer Calf  
**BLC ZIZI 230Z**

02/27/2012 BLC 230Z CDGV146843

VV WINTER STAR 42W

ATC GOLD STAR POLLED 5D  
TSCC TWIN STAR ROXANDRA 329R

BLC RISOTTO 230R

VV MEREDUDD 49M  
BLC KYM 230K

ACT. BW	ADJ. WW	ADJ. YW	CE	BW	WW	YW	MILK	TM	GL	CED	SC
88			114	-1.5	29	58	16	30	-1.6	105	-0.1

CONSIGNOR: BEAMISH LAND & CATTLE - JARVIE, AB

*BLC Zizi 230Z is a very thick heifer with lots of volume, is easy on the eyes, has a great hair coat and great disposition. 230Z's dam is a deep sided, easy keeping cow. Calvin would have liked to have kept this classy heifer as a replacement.*

# The Wish List Sale 2012



## 22

### Polled Purebred Heifer Calf **CK MISS OPTIMUS 27Z**

02/10/2012 CK 27Z CDGV146250

ULL SALVADOR 43W

VV SALVADOR 37S  
ULL GOLDEN LADY 7T

CK PRARIE DUSK 25U ET

SLC FREEDOM 178F ET  
SLC ANITA 113J

ACT. BW	ADJ. WW	ADJ. YW	CE	BW	WW	YW	MILK	TM	GL	CED	SC
70	628		108	-1.0  +	38  +	81	13	32	-2.4	101	0.5

CONSIGNOR: BRITTAIN FARMS - FALUN, AB

*CK Miss Optimus 27Z is a very fancy dark red heifer with a truly outstanding pedigree. She is sired by ULL Salvador 43W - a herdsire that is leaving his imprint on the Brittain program. Her dam is an ET daughter of SLC Freedom and the great SLC Anita cow family. These proven genetics will lead you in the right direction.*



LOT 22 - CK MISS OPTIMUS 27Z

## 23

### Black Polled Purebred Heifer Calf **CK TARGETS SECRET 15Z**

02/07/2012 CK 15Z CDGV146242

RWG TARGET 7102

RWG ROYAL RESERVE 5066  
TSCC TWIN STAR REBA 336R

CK TAKODA 92T

WGG REMARKABULL 60R  
CK KITTY 59K

ACT. BW	ADJ. WW	ADJ. YW	CE	BW	WW	YW	MILK	TM	GL	CED	SC
90	706		109	1.4  +	39  +	71	17	36	-0.3	101	0.6

CONSIGNOR: BRITTAIN FARMS - FALUN, AB

*CK Targets Secret 15Z is a stylish black daughter of RWG Target and out of the long standing cow families at Brittain Farms. You will appreciate the length and volume that this heifer's genetics will add to your program.*



LOT 23 - CK TARGETS SECRET 15Z

## 24

### Black Polled Purebred Heifer Calf **CK BLACK GOLD 119Z**

03/11/2012 CK 119Z CDGV146326

SLC OUTBACK 144W

CES DECKA OUTBACK 75S  
SLC STAR 97T

JLD XTRA TOASTY 42X

TVR ULTRASONIC 9U  
JOE GIDDY UP COW GIRL 483U

ACT. BW	ADJ. WW	ADJ. YW	CE	BW	WW	YW	MILK	TM	GL	CED	SC
77	666		105	1.3  +	33  +	70	19	35	0.1	99	

CONSIGNOR: BRITTAIN FARMS - FALUN, AB

*CK Black Gold 119Z will definitely attract your attention at the Wish List Sale. This very attractive, feminine, structurally correct heifer is sired by the calving ease sire SLC Outback 144W and out of a sweet dam purchased from Gold Bar Gelbvieh. She is one of Kelly's favourite calves.*



LOT 24 - CK BLACK GOLD 119Z

*Gelbvieh*  
40 Years

# The Wish List Sale 2012



LOT 25 - TVR Miss SHADYCAT 202Z

25

Black Polled Purebred Heifer Calf  
**TVR MISS SHADYCAT 202Z**

03/06/2012 TVR 202Z CDGV146402

JRI TOP GRID 254T725

JRI TOP SECRET 253M75 ET  
JRI MSEXTRAIMPRESSD254P625ET

TVR SHADYCAT 6S

RTC ATLAS 712G  
TSCC TWIN STAR PARIS 121P

ACT. BW	ADJ. WW	ADJ. YW	CE	BW	WW	YW	MILK	TM	GL	CED	SC
84	695		110	-0.1  +	34  +	64	17	33	-0.3	104	-0.1

CONSIGNOR: TOWERVIEW RANCH - MEDICINE HAT, AB

TVR 202Z is most likely the first JRI Top Grid sired female to sell in Canada by auction. She is sweet made and will become a foundation female in any herd. The style this gal exudes is impressive.



LOT 26 - TVR Miss PARADISE 218Z

26

Black Polled Purebred Heifer Calf  
**TVR MISS PARADISE 218Z**

03/11/2012 TVR 218Z CDGV146370

RWG TENNESSEE CAT 7104

RWG ROYAL RESERVE 5066  
TSCC TWIN STAR KITTY 710K

DL JEN-TY PARADISE 152R

DL JEN-TY BLK IMPRINT 143L  
JC PEMBINA KATE 563K

ACT. BW	ADJ. WW	ADJ. YW	CE	BW	WW	YW	MILK	TM	GL	CED	SC
97	702		108	2.5  +	46  +	80	16	37	-0.3	103	0.8

CONSIGNOR: TOWERVIEW RANCH - MEDICINE HAT, AB

Miss Paradise is a very correct made, stylish enticing young lady with a terrific pedigree. She is sired by the National Champion Bull, Tennessee Cat and out of a great producing female bred in the Jen-Ty program; a very dynamic genetic package.



LOT 27 - KCC EARS MY NBR CALL ME MAYBE

27

Polled Purebred Heifer Calf  
**KCC EARS MY NBR CALL ME MAYBE**

02/18/2012 KCC 56Z CDGV146892

ULL HEAVY TRADER 27W

ULL TRADEMARK 32T  
ULL BLACK MIST 66R

KCC MS ERHART 28U

OAR MO-ROC PAYDAY 110P  
KCC KERINNESS MS ERHART 19L

ACT. BW	ADJ. WW	ADJ. YW	CE	BW	WW	YW	MILK	TM	GL	CED	SC
91			104	2.3	34	65	18	35	-0.7	99	0.2

CONSIGNOR: KERINNESS CATTLE CO LTD - AIRDRIE, AB

KCC 56Z is a golden gal who is soft shouldered and well balanced with a good spring of rib. Her dam is a 1400 lb female that is maintenance free. This Heavy Trader daughter will add plenty of top quality maternal traits into your breeding program.

# The Wish List Sale 2012



## 28

### Polled Purebred Heifer Calf **JLD GIDDY UP WIZARD 262Z**

02/02/2012 JLD 262Z CDGV146895

PHG MR. WIZARD W27

ELK CK FORMULA 957S  
COL MISS PEGASUS 61S

JOE GIDDY UP COW GIRL 483U

OAR MO-ROC PAYDAY 110P  
JOE YOU GO GIRL 451R

ACT. BW	ADJ. WW	ADJ. YW	CE	BW	WW	YW	MILK	TM	GL	CED	SC
96			97	5.6	47	82	18	41	0.2	95	0.3

**CONSIGNOR: GOLD BAR GELBIEH - VANDERHOOF, BC**

*JLD 262Z is a thick, deep daughter of Mr. Wizard who has that extra performance and dimension. This easy going heifer has the pedigree to produce plenty of milk. She is sure to become a top end brood cow.*



**LOT 28 - JLD GIDDY UP WIZARD 262Z**

## 29

### Black Polled Purebred Heifer Calf **RTG DELILAH Z209**

02/21/2012 RTG Z209 CDGV146576

RWG ROYAL RESERVE 5066

JRI EXTRA EXPOSURE 285L71 ET  
DVE DAVIDSON MS PLD BLK 107L

RWG CHERRY 9148

VG VALLEY MISTER 68N ET  
VG VALLEY MS CHERRY 80T

ACT. BW	ADJ. WW	ADJ. YW	CE	BW	WW	YW	MILK	TM	GL	CED	SC
82	590		113	-0.9  +	31	56	16	31	-0.4	104	0.7

**CONSIGNOR: ROCKY TOP GELBIEH - MIRROR, AB**

*This is the first time that Cody has consigned to the Wish List Sale and he is coming out very strong. RTG Z209 is a thick, well structured, powerful female who will add performance into the right breeding program. Her sire, Royal Reserve, was National Champion Bull in 2008 and has gone on to sire a number of great progeny throughout the country. Her dam is an exceptionally good uddered cow going back to the Valley Gelbvieh breeding.*



**LOT 29 - RTG DELILAH Z209**

## 30

### Black Polled Purebred Heifer Calf **RTG BLACK BETTY**

03/18/2012 RTG Z332 CDGV146577

RWG ROYAL RESERVE 5066

JRI EXTRA EXPOSURE 285L71 ET  
DVE DAVIDSON MS PLD BLK 107L

RWG GOOD NIGHT 9227

EGL PABST L011 ET  
VG VALLEY MISS 14N

ACT. BW	ADJ. WW	ADJ. YW	CE	BW	WW	YW	MILK	TM	GL	CED	SC
86	443		108	1.7  +	43	75	18	39	0.5	103	0.6

**CONSIGNOR: ROCKY TOP GELBIEH - MIRROR, AB**

*RTG Z332 is another top pick from Rocky Top Genviah. This extremely fancy heifer is out of a moderately build, sound, well uddered dam sired by EGL Pabst. She too is a daughter of RWG Royal Reserve and the show quality of this heifer is very evident. You will appreciate this gal's potential.*



**LOT 30 - RTG BLACK BETTY**

*Gelbvieh*  
40 Years

# The Wish List Sale 2012

## 31

Black Polled Purebred Heifer Calf  
**RAC RAC ZENYA 4Z**  
 05/26/2012 RAC 4Z CDGV146436

VV WHAT A TIZZY 63W ET

JCGR BAR GT LOUIE 2J  
 GCC RED SUGAR 59K

TOM WINDING WILLOW 4W

DCC STOUT 22S  
 TOM SMOOTH STRUT 117T

ACT. BW	ADJ. WW	ADJ. YW	CE	BW	WW	YW	MILK	TM	GL	CED	SC
89			106	1.6  +	36	67	18	36	-1.6	100	

CONSIGNOR: DANE RANCH - TATLA LAKE, BC

RAC Zenya 4Z is a top quality, black purebred heifer who is very deep sided with loads of performance who will catch your attention on sale day. She is sired by VV What A Tizzy 63W - the high selling bull at the V & V Farms 2010 Bull Sale. 63W is sired by JCGR Bar GT Louie and out of the great donor cow GCC Red Sugar 59K. A daughter was one of the high selling females in the 2011 Wish List Sale. Her dam is sired by the great Stout 22S herd bull and is rapidly becoming a top producing female at Dane Ranch.

## 32 *Flush*

Flush Opportunity  
**SLC PARKLAND 145X**  
 05/03/2010 SLC 145X CDGV135499

CES DECKA OUTBACK 75S

CES DECKA PRECISION 144P  
 CES DECKA HARPER 150L

SLC PARKLAND 220U

SLC MERV 12N  
 SLC COPPER PARKLAND 139G

ACT. BW	ADJ. WW	ADJ. YW	CE	BW	WW	YW	MILK	TM	GL	CED	SC
78			109 .1	0.4 .1	35 .1	69 .1	17 .1	35	-0.9 .1	100 .1	0.3

CONSIGNOR: FOURSQUARE GELBVIEH - CARSTAIRS, AB

What an opportunity to flush one of the greatest maternal lines in the Gelbvieh breed. SLC Parkland 145X was at side of her dam when named that National Champion Female at the 2010 Canadian Western Agribition Show. Her dam, SLC Parkland 220U, is considered by many to be one of the most optimum brood cows in the breed today. SLC 145X is a sweet made, feminine daughter of Decka Outback 75S who is raising her first calf this summer at Foursquare Gelbvieh. Foursquare are guaranteeing six embryos from the sire of the buyer's choice. The guess work is done - the genetics are now available.



VV WHAT A TIZZY 63W ET - SIRE OF LOT 31



LOT 32 FLUSH DAM - SLC PARKLAND 145X

## ~ Donation Heifer ~

Polled Purebred Heifer Calf  
**STON ROYAL GIRL 38Z**

16/04/2012 STON 38Z CDGV47235

SLC TOUCHDOWN 166W

SLC TOUCHDOWN 71T  
 SLC EMPRESS 68N ET

SLC ROYAL GIRL 28X

DF TUXEDO 34T ET  
 EV ROYAL GIRL 31R

ACT. BW	ADJ. WW	ADJ. YW	CE	BW	WW	YW	MILK	TM	GL	CED	SC
74			101	3.9	51	80	13	38	-0.3	100	

DONATED BY STONE GATE FARM  
 DARRELL AND LEILA HICKMAN & FAMILY

The donation heifer this year is donated by Stone Gate Farm - Vermilion, AB.  
 Thank you to Darrell and Leila Hickman and family.

STON 38Z is a fancy, low birth weight gal who was purchased in dam at last year's Severtson Land and Cattle Top Cut Female Sale.

All Junior members and 4H Beef Club members in attendance can get one free ticket before the sale.



DONATION HEIFER - STON ROYAL GIRL 38Z

Gelbvieh  
 40 Years

~ Please bring this catalog with you to the sale ~

# The Wish List

## GELBVIEW WEEKEND

50/50  
Prize

Guess the weight of Owen to be involved in the 50/50 prize.

The winner will be announced at the sale.

Fifty percent of the money goes to the Gelbvieh Association of Alberta / BC and 50% to the winner of the closest guess.

Owen is a 4-year-old Gelbvieh steer raised at Beamish Land & Cattle who is a real conversation piece in the Jarvie area. He is very quiet and can be saddled and ridden. Maybe Calvin will give us a demonstration!



**Nov. 30 - Dec. 2, 2012**  
PONOKA AG EVENT CENTRE, PONOKA, AB

### Schedule of Events . . .

**Nov. 30** - 9 am Cattle Move In throughout the day  
- 7 pm GAA/BC Board Meeting

**Dec. 1** - 12 noon Lunch  
- 1 pm GAA/BC Annual General Meeting  
- 3 pm Heifer Pen Show, followed by Bull Jackpot  
- 5 pm Steak Dinner & Social  
- 7 pm Wish List Sale

**Dec. 2** - Cattle Move Out

A block of rooms has been reserved under "Wish List" until October 30 at

**Ponoka Stampede Inn - 1.877.783.5533**  
price of \$87/night plus taxes

#### Class 1: Pen of 3 commercial heifers born in 2012

- 1st Prize - \$1000 cash, Belt Buckle • 2nd Prize - \$500 cash

#### Class 2: Gelbvieh Bull Jackpot

- The Gelbvieh Bull Jackpot is open to purebred and Balancer calendar year bull calves and bulls born between May 1, 2011 and Dec. 31, 2012. The winner of each division receives 75% of the pot and a belt buckle. Bulls do not have to be halter broke and can be clipped, but not fit for the show.

Farm Name \_\_\_\_\_ Exhibitor Name \_\_\_\_\_

Address \_\_\_\_\_ Postal Code \_\_\_\_\_

Phone \_\_\_\_\_ Email \_\_\_\_\_

I am entering \_\_\_\_\_ Pen(s) of Commercial Heifers at \$100 each \$ \_\_\_\_\_

I am entering \_\_\_\_\_ Gelbvieh Bull Jackpot at \$100 each \$ \_\_\_\_\_

I require \_\_\_\_\_ Sire Show Pen space at \$150 each \$ \_\_\_\_\_

I require \_\_\_\_\_ Display Booth Pen space at \$100 each \$ \_\_\_\_\_

Total payment enclosed \$ \_\_\_\_\_

Cheques made payable to:  
**Gelbvieh Association of AB/BC**

Mail entries to:  
Aaron Birch  
Box 192, Lomond, AB T0L 1G0  
403.485.5518  
aaron@tbfarms.ca



**Don Savage Auctions**  
108 Flett Drive, Airdrie, Alberta T4B 1N2  
Phone: 403/948-3520 Fax: 403/948-2917  
www.donsavageauctions.com  
e-mail: don@donsavageauctions.com



# *The Wish List*

## **GELBVIEWH SALE**

SATURDAY  
**DECEMBER 1, 2012**  
7:00 P.M.

PONOKA AG EVENT CENTRE  
PONOKA, AB

**ALL CATTLE SELLING ARE  
DNA PARENTAGE VERIFIED**