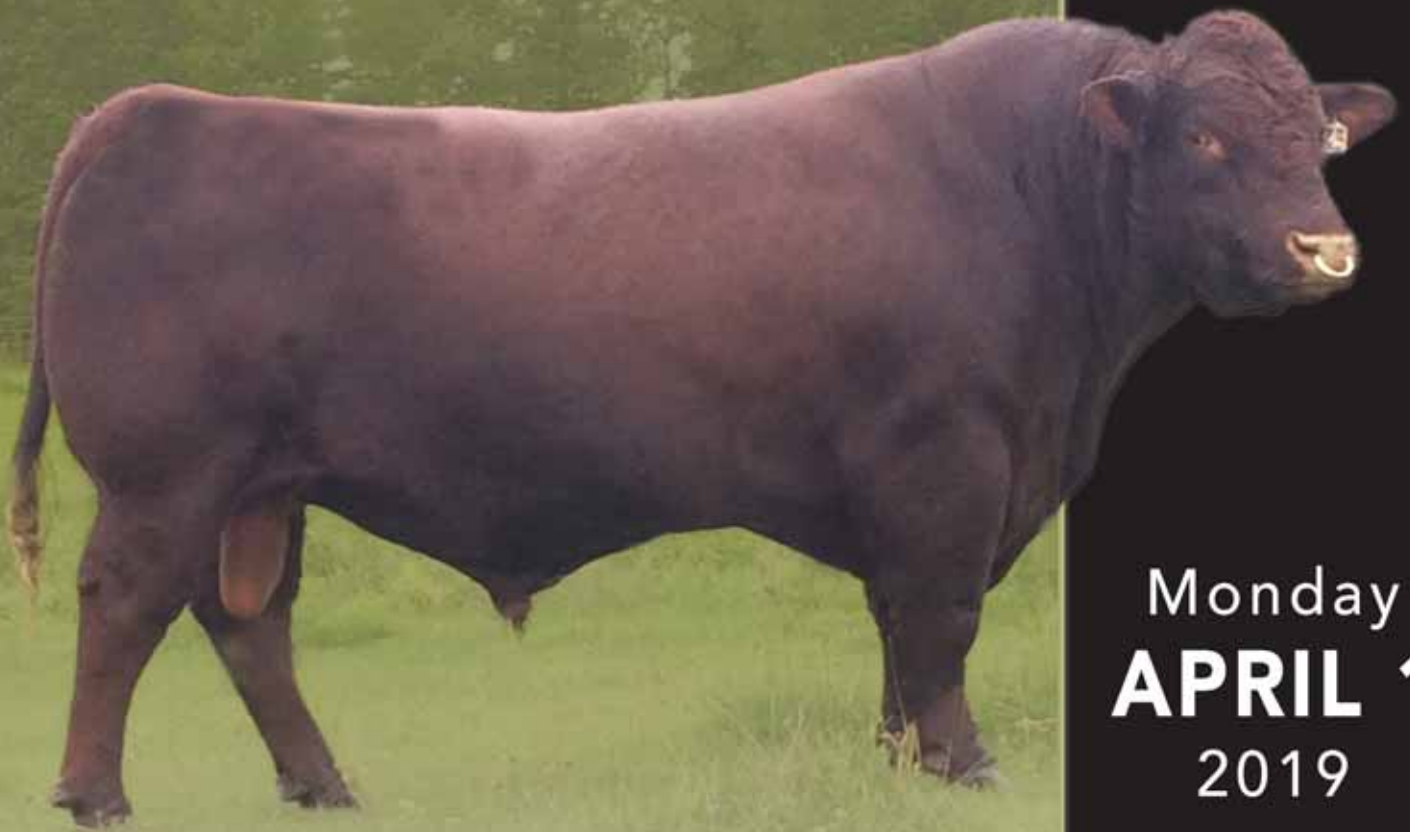


1st Western Prime

Shorthorn & Red Angus
BULL & FEMALE SALE



Monday
APRIL 1
2019

1 pm MDT • Innisfail Auction Mart • Innisfail, AB

1st Western Prime

Shorthorn & Red Angus
BULL & FEMALE SALE

Featured Herds



Kirk & Brandie Seaborn

CROOKED POST SHORTHORNS

Kirk Seaborn
Box 8, Site 11, RR #3
Rocky Mountain House, AB T4T 2A3
Phone: 403-729-2267 Cell: 403-322-0142
Email: crookedpostshorthorns@hotmail.com
Facebook: Crooked Post Shorthorn



Tom & Sharon Seaborn

SHAROM SHORTHORNS

Tom & Shari Barto and Family
Box 1001
Thorhild, AB T0A 3J0
Phone: 780-398-2093 Cell: 780-307-4043
Email: tsbarto@mcsnet.ca
Web: www.sharomshorthorns.com



Tom, Shari, Evan, Amber & Eric Barto

STARBRIGHT SHORTHORNS

Rena Nelson
Box 7846
Bonnyville, AB T9N 2J2
Phone: 780-826-4135 Cell: 780-201-2785
Email: nelson.ericrena@gmail.com



Rena Nelson & Family

JANELL SHORTHORNS

Melanie Barkley & Michelle Duncan
Box 1473
Stettler, AB T0C 2L0
Phone: 403-740-4958
Email: mel.barkley@yahoo.com



The Janell Shorthorn Crew

NORELL ANGUS

Darrell & Brent Papuschak
Site 14, Box 22, RR # 3
Rocky Mountain House, AB T4T 2A3
Darrell - Phone: 403-845-7963 Cell: 403-844-1698
Email: darrellpapuschak@keyera.com
Brent - Phone: 403-844-7143
Email: pappy_77@hotmail.com



Darrell & Brent Papuschak

1st Western Prime

Shorthorn & Red Angus BULL & FEMALE SALE

Featuring Top Canadian Genetics

- Two Year Old Bulls
 - Yearling Bulls
- Open Purebred Shorthorn & Red Angus Females
 - Open Commercial Shorthorn Heifers

All bulls will be semen tested prior to the sale

Join us for "Beef on a Bun" at 11:30 am

SALE DAY PHONES

Don Savage (Cell) 403.803.4434
Innisfail Auction Mart 403.227.3166

ALL JUNIORS PURCHASING A PUREBRED HEIFER
RECEIVE A 10% DISCOUNT

Please register with the clerks prior to the sale

SALE STAFF

Don Savage, Auctioneer 403.948.3520
Mark Daines 403.350.0200
Danny Daines 403.391.0580
Duane Daines 403.886.4004
Kyle Daines 403.598.0311
Robert Lind 780.542.0123

INSURANCE

Cheryl Brown 403.601.3460

ACCOMMODATIONS

Super 8 Innisfail 403.227.6001
Best Western Innisfail 403.227.4405

SALE MANAGED BY



Don Savage Auctions



108 Flett Drive, Airdrie, Alberta T4B 1N2
Phone: 403/948-3520 Fax: 403/948-2917
Website: www.donsavageauctions.com
Email: don@donsavageauctions.com

Monday
APRIL 1
2019

1 PM MDT
Innisfail Auction Mart
Innisfail, Alberta, Canada

General Information

TERMS OF SALE: Are cash or cheques at par, payable to the clerks of the Sale on sale day. U S funds will be accepted at the current rate of exchange. No release will be given until satisfactory settlement has been made. Full payment shall constitute a final sale and then registration papers will be transferred.

HEALTH: All Sale cattle meet the Canadian Health standards. Foreign buyers are responsible for knowing the current Health standards of their country.

GUARANTEE: All Sale cattle are guaranteed under the terms and conditions of Sale as recommended by the Canadian Shorthorn and Canadian Angus Associations.

PHONE BIDS: If you are unable to attend the Sale, but wish to make a purchase, please feel free to contact any of the sale staff, livestock representatives or Don Savage Auctions and your order will be handled in a professional manner.

INSURANCE: Ownership commences to the purchaser as soon as the animal is sold. Insurance agents will be present sale day to look after your insurance requirements.

Although every precaution will be taken to protect the safety and comfort of the buyers neither Don Savage Auctions nor the consignors assume any responsibility in these matters and disclaims any liability, legal or otherwise, in the event of an accident or loss of property.

Internet Bidding Available

DLMS
www.dlms.ca

For more information Call DLMS Reps:
Mark Shologan 780.699.5082
Whitney Bosovich 780.991.3025

Shorthorn & Red Angus
BULL & FEMALE SALE

Welcome to the 1st Western Prime Bull and Female Sale. We are grateful that you have considered our genetics to put into your breeding programs. Our consignors have provided some of their best animals to bring to the sale this year. Performance and quality are what we all strive to achieve. Whether it will be for mature cows or first calf heifers, we are confident you will find the bull for your needs here. A strong selection of heifers to add to any breeding program are also on offer.

The newly established Western Prime Group has a unified and focused objective towards better serving the needs of our customers. The cattle on offer are mindfully created through years of performance, structural, visual, convenience and profit trait selections. We've undergone years of data collection and submission to enable not only a better selection criteria for our own breeding decisions but also for our customers.

The Western Prime is one of the first Shorthorn Bull Sales in the world to have all offered bulls armed with Genomically Enhanced EPDs (GE-EPD). Geneseek Genomic Profiler, the most advanced DNA test available that serves as a test proof that the cattle being offered have the known genes associated with the performance, measurements and claims already being made and offered. A considerable expense that we feel is a vital investment as we charge forward, we're putting our money where our mouth is.

We stand behind our cattle and breeding programs. We are all excited for this sale and the opportunity to earn your business and trust. Please feel free to contact any of us if you have questions on any of the sale lots. We look forward to seeing you on sale day!

Sincerely
The Western Prime Sale Group

*One of the first
Shorthorn Bull
Sales in the world
to have all offered
bulls armed with
Genomically
Enhanced EPDs
(GE-EPD)*

Shorthorn Bulls.....	Lots 1 - 28
Shorthorn Heifers.....	Lots 29 - 35
Red Angus Bulls.....	Lots 36 - 40
Red Angus Heifers.....	Lots 41 - 43
Commercial Heifers.....	Page 16



108 Flett Drive, Airdrie, Alberta T4B 1N2
Phone: 403/948-3520 Fax: 403/948-2917
Website: www.donsavageauctions.com
Email: don@donsavageauctions.com



Welcome to the 1st Western Prime Shorthorn and Red Angus Bull & Female Sale. A new year is before us and a new start, looking towards a positive future for agriculture and the cattle business in particular.

The Western Prime Sale will feature some of the top Shorthorn and Red Angus genetics that are available this spring. The breeders that are involved are some of the most focused and reliable outfits that are in the seedstock industry. On the Shorthorn side all bulls and females have been genomic tested. Genomics is a new tool that enhances the EPDs on all individuals, this high accuracy assists you in achieving your cattle breeding goals a lot sooner. More on genomics can be read throughout the catalogue. The Red Angus bulls and females on offer are sure to create a lot of attention. A Red Angus program that has historically sold from home, but has decided to now market through the Western Prime Sale.

The sale will consist of top quality two year old and herd sire calibre yearling bulls, complimented by a fantastic group of open yearling purebred and commercial heifers. These are the kind of genetics that will add performance, milk and maternal traits into building your cowherd. Both Shorthorn and Red Angus are excellent for crossbreeding and you are sure to love the results. All Juniors purchasing a purebred heifer will receive a 10% discount.

If you have any questions please contact any of the consignors, or myself. If you are interested in adding these great genetics into your herd but are unable to attend the sale please contact any of the sale staff, livestock representatives or Don Savage Auctions and your order will be handled in a professional manner.

Yours truly,
Don Savage

PS: Most of the lots were pictured in -30 degree weather in early February. We hope it warms up before April.

BENEFITS OF GENOMICALLY - ENHANCED EPDs TO COW/CALF PRODUCERS (GE-EPD)

The value added by genomic profiling can be appreciated when we consider how it significantly increases the accuracy and reliability of the existing data and EPD values. To understand how significant of an increase in reliability we can cross compare how many progeny it would take from a bull or progeny from a cow to have the same effect in increased reliability of the EPD traits; these are called Progeny Equivalents. A genome profile has the Progeny Equivalent, same significance in accuracy increase, as reporting 15 reported calving ease scores, 21 birth weights reported, 22 weaning weights reported, 24 yearling weights reported. Very significant!! Now get this!! The advantage of genomic profiling for the purposes of female replacement will provide more significance than what can be collected from a lifetime of production; progeny equivalents of 25 stayability/longevity records and 18 milk records!! An EPD value is only as valuable as it's accuracy and reliability and until then it's potentially dangerous in the wrong hands!!

Maternal GE-EPDs – Improve profits per cow:

- Verify calving-ease bulls, saving time, cost and stress when calving heifers.
- Identify bulls and cows with superior reproduction traits to improve cowherd fertility and maternal productivity.
- Better fertility improves conception rates, calving window and calf-crop uniformity.

Performance GE-EPDs – Optimize efficient returns:

- Produce cows that improve pounds weaned per exposed female.
- Produce cows for optimum growth for your grazing environment.
- Improve feed efficiency, producing heifers and cows that gain well on less feed and pass thrifty traits onto to their calves.

Quality GE-EPDs – More consistency of beef quality:

- Helps customers retaining calves, or selling into grids or value networks.
- Adds value and reputation quality in stockers or feeder calves.
- Predicts quality up front, saving years of valuable time, with less hassle than collecting carcass data.



Using genomic-enhanced EPDs for selection of young breeding stock provides a level of precision and reliability that's never been available to producers before.

Bob Weaver - Kansas State University

AVERAGE CANADIAN SHORTHORN EPDS (non-parents)

CED	BW	WW	YW	MK	TM	CEM	ST	\$CEZ	\$BMI	\$F
+10	+1.5	+54	+80	+19	+46	+6	+15	31.53	123.11	53.69

CANADIAN SHORTHORN EPDs

Expected progeny differences (EPDs) are a very important tool used in genetic selection. EPDs are used to compare the differences in predicted performance of animals' offspring for specific traits. Calculation of EPDs is driven by pedigree, progeny, and individual performance data. The American Shorthorn Association offers 12 different EPDs for specific traits. Additionally, ASA provides three economic (\$ Value) indexes, providing a single value for the selection of breeding stock that optimizes selection on a number of traits that define profit in a particular production scenario.

Definitions for traits found in this catalog are:

Calving Ease Direct (CED): The most important EPD in sire selection for use on heifers. This value is expressed as a percent of unassisted births; the more positive a number is the more desirable.

Birth Weight (BW): An indicator of birth weight and calving ease. Larger BW EPDs typically, but not always indicate more calving difficulty.

Weaning Weight (WW): Weaning weight measures the differences in weight of calves at weaning, and is also reported in pounds. A higher WW EPD indicates an expected higher weaning weight.

Yearling Weight (YW): Like other weight traits, YW measure the differences in weight of animals at yearling, and is also expressed in pounds. Higher YW EPDs indicate a higher expected yearling weight.

Milk (MK): the expected differences in a bull's daughters' calves at weaning weight due to their milking ability. Milk is looking at how well daughters milk and how that translates to the weaning weights of their calves. A higher MK EPD indicates a higher weaning weight due to the bull's daughters' milking ability.

Total Maternal (TM): TM predicts the total difference in weight of a bull's daughters' calves at weaning. A portion of this difference in weight comes from the milking ability of the bull's daughters (MK EPD), and a portion comes from the genes for growth passed from the bull to his daughters and then on to their calves. The TM EPD is calculated by taking ½ of a bull's WW EPD + his MK EPD.

Calving Ease Maternal (CEM): Reflects a bull's ability to sire daughters who calve unassisted. The value is expressed as a percentage of unassisted births, with a more positive number being more desirable.

Stayability (ST): The newest addition to the Shorthorn EPD lineup, Stayability is a measure of the percentage

of a bull's daughters that will still be in the herd at six years old. Like CED and CEM, Stayability is expressed as a percentage. A higher ST EPD indicates a higher percentage of daughters staying in the herd.

Calving Ease Direct (\$CEZ): This index assumes a bull will only be mated to heifers, not cows. The potential profitability of the sire is measured by the incidence of live calves at birth. Moderate mature size is also emphasized in the index, but performance is not a priority.

British Maternal Index (\$BMI): This multi-trait selection index attempts to measure a bull's potential profitability when complimenting the British cow base (Angus, Red Angus, Hereford, etc.). Shorthorn females can likewise be gauged at adding value to British or British-composite bulls of other breeds. A balance of growth and carcass traits is desired with a strong maternal component aimed at optimum reproductive efficiency and cow longevity.

Feedlot (\$F): \$Feedlot places strong emphasis on growth and carcass traits. This multi-trait index assumes the sire will be mated to a mix of heifers and cows and attempts to measure profitability when progeny are sold on the fed market. On the female side, mature size should be monitored closely when selecting for \$F.



1 POLLED RED BULL
CROOKED POST DROVER 11E

22/02/2017 | SLU 11E | X-[CAN]M480381

CROOKED POST STOCKMAN 4Z

BELMORE JACKAROO Z109
CROOKED POST RED ROSE 4U

CROOKED POST MINNIE 3W

CROOKED POST GRISSOM 24T
CROOKED POST MINNIE 19T

BW: 86	ADJ. WW: 754	ADJ. YW: 1284	12 MO. SC: 38.4 CM							
CED	BW	WW	YW	MK	TM	CEM	ST	\$CEZ	\$BMI	\$F
+8	+0.5	+64	+98	+27	+59	+6	+13	22.49	137.28	58.92

Our cows do treat us well; with years of critical selection, high expectations and few second chances, we've created a cow herd that does a lot of things right and not a lot wrong. With this management in place we've had an inordinate amount of Crooked Post cows designated as Performance Dams by the American Shorthorn Association. This super impressive Stockman son is from ASA Performance Dam Crooked Post Minnie 3W, with her 9th calf she's maintained an average calving interval of 362 days. Crooked Post Drover 11E has got a lot of things going for him and is sure to attract interest from near to afar.



2 POLLED RED BULL
CROOKED POST MERCURY 30E

28/03/2017 | SLU 30E | X-[CAN]M481293

KCSF RED MERCURY 1B

GFS CREOLE 9590 ET
BRAEBANK DEW WINNIE 1W

CROOKED POST SAM 39C

CROOKED POST STOCKMAN 4Z
CROOKED POST SAM 28X ET

BW: 80	ADJ. WW: 711	ADJ. YW: 1164								
CED	BW	WW	YW	MK	TM	CEM	ST	\$CEZ	\$BMI	\$F
+12	+1.3	+57	+85	+21	+49	+7	+15	36.76	135.28	54.75

Raised by a first calved Stockman daughter who in turn is out of a 2017 ASA Pacer Performance Dam Crooked Post Sam 28X ET. We used the KCSF Red Mercury sire on heifers for two years, calving seasons are restful, the progeny have performed well through to weaning and onto become very useful as replacement breeding stock.



3 POLLED RED BULL
CROOKED POST MERCURY 36E

06/04/2017 | SLU 36E | X-[CAN]M481294

KCSF RED MERCURY 1B

GFS CREOLE 9590 ET
BRAEBANK DEW WINNIE 1W

CROOKED POST SAM 28X ET

WAUKARU GOLD MINE 2109
CROOKED POST SAM 2P

BW: 83	ADJ. WW: 662	ADJ. YW: 1163								
CED	BW	WW	YW	MK	TM	CEM	ST	\$CEZ	\$BMI	\$F
+12	+0.5	+51	+76	+22	+47	+7	+12	41.65	124.19	50.08

I am often bewildered by the proportion of bulls in many consignments that are described as being from the 'best cow in the herd'. This bull's mother, Crooked Post Sam 28X ET, was recently awarded 2017 Performance Dam by the American Shorthorn Association; an honor intended to recognize those females who's expression of fertility, productivity and predictability are amongst the most elite females of the breed. End of story!!



4

CROOKED POST HOPE 52E

POLLED RWM BULL
28/04/2017 | SLU 52E | X-[CAN]M481732

KCSF RED MERCURY 1B

GFS CREOLE 9590 ET
BRAEBANK DEW WINNIE 1W

CROOKED POST HOPE 8T

BYLAND MISSION 6RD112
CROOKED POST HOPE 17R

BW: 82	ADJ. WW: 642	ADJ. YW: 1099								
CEZ	BW	WW	YW	MK	TM	CEM	ST	\$CEZ	\$BMI	\$F
+9	+1.6	+52	+78	+22	+48	+7	+14	28.36	121.33	51.06

We purchased the KCSF Red Mercury bull in partnership with Coldstream Farms, Ontario, where much of the foundation of that herd originated from here at Crooked Post in the form of bred heifers and a young herdsire sent over in 2013. The 2018 Red Mercury progeny at Coldstream were dominant on the southern Ontario summer and fall interbreed show circuit right through to the Toronto Royal. The dam of this bull is a Byland Mission daughter who's provided us with 11 calves in 11 production seasons with an average calving interval of only 371 days, RELIABLE COW!!



LOT 4

5

CROOKED POST CADILLAC 56E

POLLED RED BULL
23/05/2017 | SLU 56E | X-[CAN]M480377

KCSF RED MERCURY 1B

GFS CREOLE 9590 ET
BRAEBANK DEW WINNIE 1W

CROOKED POST MINNIE 23Z

JT EXCLUSIVE 65X
CROOKED POST MINNIE 34W

BW: 90	ADJ. WW: 759	ADJ. YW: 1185								
CEZ	BW	WW	YW	MK	TM	CEM	ST	\$CEZ	\$BMI	\$F
+5	+1.9	+54	+81	+20	+47	+2	+14	16.80	113.18	52.50

Out of the powerhouse dam Crooked Post Minnie 23Z who never fails to impress, consistently providing top replacement breeding stock year after year. Her 2016 bull, Crooked Post Tobias 13D, was purchased by Wenmar Beef in the UK, semen is being marketed throughout Europe and is seeing natural service at Crooked Post Shorthorns.



LOT 5

6

ARBUTUS MERCURY 1E

POLLED RED BULL
28/03/2017 | COW 1E | X-[CAN]M481730

KCSF RED MERCURY 1B

GFS CREOLE 9590 ET
BRAEBANK DEW WINNIE 1W

CROOKED POST LASSIE 27U

WAUKARU GOLD MINE 2109
WAUKARU LASSIE 347

BW: 89	ADJ. WW: 690	ADJ. YW: 1080								
CEZ	BW	WW	YW	MK	TM	CEM	ST	\$CEZ	\$BMI	\$F
+13	+1.6	+57	+85	+20	+49	+8	+13	41.07	129.18	52.62

From the most prolific Waukaru Goldmine 2109 daughter we've ever held on inventory, regardless of management or environmental variables she's never had a bad year!! With her 10th calf now at her side, she's maintained an average calving interval of under 356 days, a rare and significant accomplishment. Both the male and female progeny in that decade have averaged 84 lb. birth weight and just over 700 lbs. weaning weight. We've been able to selfishly hold onto some of her daughters but she's had other progeny dispatched to other herds from BC to Quebec.



LOT 6

.....
"We believe in providing our customers with the most accurate information possible. Combining DNA information with a bull's pedigree and individual production data significantly increases the reliability of his EPDs. All bulls in this sale have genomic-enhanced EPDs powered by Neogen."



7 POLLED RED BULL
CROOKED POST CURFEW 4F
25/01/2018 | SLU 4F | X-[CAN]M481682

SASKVALLEY CURFEW 41C
CROOKED POST MARIA 6D

SASKVALLEY ALAMO 8A
SASKVALLEY BLOSSOM 295A
BELL M DETAIL 130A
CROOKED POST MARIA 31B

BW: 70		ADJ. WW: 758								
CED	BW	WW	YW	MK	TM	CEM	ST	\$CEZ	\$BMI	\$F
+16	-0.4	+55	+80	+18	+45	+9	+19	54.07	136.85	54.81

Just a massive birth to weaning weight spread off a sweet little first calved heifer. She weaned off 68.91% of her body weight with this strapping Curfew 4F bull calf at 205 days. He ranked 1/18 and 2/18 respectively for birth weight and weaning weight measures amongst those in his contemporary group.



8 POLLED RED BULL
CROOKED POST CURFEW 9F
30/01/2018 | SLU 9F | X-[CAN]M481680

SASKVALLEY CURFEW 41C
CROOKED POST RED ROSE 3D

SASKVALLEY ALAMO 8A
SASKVALLEY BLOSSOM 295A
BELL M DETAIL 130A
CROOKED POST RED ROSE 12A

BW: 74		ADJ. WW: 735								
CED	BW	WW	YW	MK	TM	CEM	ST	\$CEZ	\$BMI	\$F
+15	-0.8	+54	+80	+21	+48	+8	+18	48.43	134.17	55.35

These Curfew bulls are always on time!! The data collected and the supporting genomic indicators all strongly point in the same direction; calving ease, stayability, high \$ value indexes and overall balanced performance profile. This Curfew 9F is from a really soggy and correct Red Rose heifer, a female who's built for production and resilient against adversity.



9 POLLED RED BULL
CROOKED POST CURFEW 12F
03/02/2018 | SLU 12F | X-[CAN]M481691

SASKVALLEY CURFEW 41C
CROOKED POST LASSIE 25C

SASKVALLEY ALAMO 8A
SASKVALLEY BLOSSOM 295A
CROOKED POST STOCKMAN 4Z
CROOKED POST LASSIE 22Z

BW: 83		ADJ. WW: 756								
CED	BW	WW	YW	MK	TM	CEM	ST	\$CEZ	\$BMI	\$F
+12	-0.9	+57	+84	+19	+47	+7	+17	37.36	129.17	55.45

His young Stockman mother is raising her 3rd calf and has held a 360 day calving interval. Ideal claw set and foot angle with sound hip and shoulder design, full of red meat, dimension and style, an impressive beast to see on the move.



10 POLLED RWM BULL
CROOKED POST CURFEW 18F
10/02/2018 | SLU 18F | X-[CAN]M481693

SASKVALLEY CURFEW 41C
CROOKED POST MINNIE 30C

SASKVALLEY ALAMO 8A
SASKVALLEY BLOSSOM 295A
CROOKED POST STOCKMAN 4Z
CROOKED POST MINNIE 34W

BW: 88		ADJ. WW: 778								
CED	BW	WW	YW	MK	TM	CEM	ST	\$CEZ	\$BMI	\$F
+17	-0.6	+58	+87	+23	+52	+10	+18	53.73	146.21	57.48

Another powerful sire prospect coming through a Stockman daughter that we value dearly; with her 3rd calf on her now she's holding true with a calving interval of 360 days. This guy posted the highest weaning weight of the Saskvalley Curfew sons and he still ranks at the top of the breed for calving ease, birth weight, maternal and \$value indexes.



Sharom Shorthorns is pleased to be a part of the Western Prime Bull and Female Sale. We have been raising purebred Shorthorn cattle for 20 years now and enjoy it just as much as when we started. All of our bulls will be semen tested prior to the sale. Our cattle are on a vaccination program that includes Bovishield products and Vision 8 way. Ivomec pour on is applied in the fall and all of our cows receive Safe Guard orally at spring turn out. If you have any questions regarding our sale lots please feel free to contact us. We hope to see you on April 1 at the Innisfail Auction Mart.

Tom, Shari, Evan, Amber and Eric Barto

"Mating young sires with highly accurate GE-EPDs to replacement heifers with known genomic profiles opens many opportunities to meet herd goals and accelerate their rate of genetic gain."

11

POLLED RED BULL
SHAROM FRED 251F

05/02/2018 | STB 251F | X-[CAN]M481069

PAINTEARTH CASH 16C

LEHNE BRIGGS 62Z
PAINTEARTH HONEY 33S

SHAROM ANNIE 251A

SHAROM WAR PAINT 31W
EIONMOR LUCY ANNE 4X

BW: 98		JAN. 12/19 WT: 941									
CED	BW	WW	YW	MK	TM	CEM	ST	\$CEZ	\$BMI	\$F	
+6	+2.3	+55	+82	+16	+43	+5	+18	20.25	119.58	53.36	

Fred has always been a favorite of ours in the pen. He puts it all together in a nice full bodied package. His dam goes back to an Eionmor cow we purchased at Morrison's West Country Bull Sale. We expect good things from this guy.



LOT 11

12

RED BULL
SHAROM FOLSOM 284F

11/02/2018 | STB 284F | [CAN]M481071

PAINTEARTH CASH 16C

LEHNE BRIGGS 62Z
PAINTEARTH HONEY 33S

SHAROM BRIDE 284B

SHAROM WOLVERINE 38W
SHAROM TWINKLES 78T

BW: 102		JAN. 12/19 WT: 998									
CED	BW	WW	YW	MK	TM	CEM	ST	\$CEZ	\$BMI	\$F	
+6	+2.3	+55	+83	+21	+49	+6	+21	20.15	122.31	55.28	

This bull has ample frame and performance that a progressive cow herd needs. His calves will push the scale down in the fall. We should have kept this one back for ourselves but decided to share him with you.



LOT 12

13

RED BULL
SHAROM FALL GUY 74F

11/02/2018 | STB 74F | [CAN]M481070

SHAROM CRAFTSMAN 87C

SHAROM WOLVERINE 38W
MATLOCK WF MILLICENT 87Z

EIONMOR HAZEL 89U

EIONMOR IDEAL 50P
EIONMOR ULTRA HAZEL 31M

BW: 83		JAN. 12/19 WT: 978									
CED	BW	WW	YW	MK	TM	CEM	ST	\$CEZ	\$BMI	\$F	
+8	+1.6	+50	+78	+26	+50	+5	+19	24.45	119.71	52.95	

Probably the thickest bull that we have to offer this year. A performance bull through and through. This bull was a twin and his dam did a fantastic job with him.



LOT 13



LOT 14

14

POLLED ROAN BULL
SHAROM FAILSAFE 224F

16/02/2018 | STB 224F | X-[CAN]M481072

PAINTEARTH CASH 16C

LEHNE BRIGGS 62Z
PAINTEARTH HONEY 33S

SHAROM CHARLOTTE 224Z

SHAROM WOLVERINE 38W
MATLOCK GS ROSELLE 12R

BW: 105		JAN. 12/19 WT: 957								
CED	BW	WW	YW	MK	TM	CEM	ST	\$CEZ	\$BMI	\$F
+6	+2.8	+58	+88	+19	+48	+6	+17	17.85	120.41	54.59

Not only is this bull eye catching, he is smooth in the shoulder and head. His sire, Paintearth Cash 16C, puts performance in all of his offspring and this bull should as well.



LOT 15

15

POLLED RED BULL
SHAROM FIRST OFFICER 236F

16/02/2018 | STB 236F | X-[CAN]M481074

PAINTEARTH CASH 16C

LEHNE BRIGGS 62Z
PAINTEARTH HONEY 33S

SHAROM AGNES 236A

SHAROM BEAR 25X
SHAROM TULIP 144X

BW: 101		JAN. 12/19 WT: 920								
CED	BW	WW	YW	MK	TM	CEM	ST	\$CEZ	\$BMI	\$F
+12	+0.7	+50	+75	+17	+42	+9	+18	39.12	123.81	52.20

A member of the Sharom Shy Gal family. This rascal was a standout from the beginning. He looked like a bull at a young age and has developed into herdsire material. This bull goes back to our old reliable Sharom Stormfront bull, a sire that left a lasting impact on our herd. This young guy could do the same for you.



LOT 16

16

POLLED RED BULL
SHAROM FLOODLIGHT 277F

20/02/2018 | STB 277F | X-[CAN]M481076

PAINTEARTH CASH 16C

LEHNE BRIGGS 62Z
PAINTEARTH HONEY 33S

SHAROM BERYL 277B

SHAROM BEAR 25X
SHAROM ROYAL JEWEL 61R

BW: 104		JAN. 12/19 WT: 925								
CED	BW	WW	YW	MK	TM	CEM	ST	\$CEZ	\$BMI	\$F
+12	+1.7	+54	+81	+17	+44	+9	+12	37.82	131.26	55.13

Another good Cash son. Like all of our bulls this year, he is stout and masculine in design. He will go out and work for you. His dam's family runs deep in our herd.



LOT 17

17

POLLED RED BULL
SHAROM FRASIER 37F

28/02/2018 | STB 37F | X-[CAN]M481082

SHAROM CRAFTSMAN 87C

SHAROM WOLVERINE 38W
MATLOCK WF MILLCENT 87Z

PROSPECT HILL YOPAZ RUBY 37Y

PROSPECT HILL DEJA VU TORPEDO
PROSPECT HILL TOPAZ 7T

BW: 102		JAN. 12/19 WT: 962								
CED	BW	WW	YW	MK	TM	CEM	ST	\$CEZ	\$BMI	\$F
+6	+0.6	+48	+73	+19	+43	+4	+19	20.17	114.96	51.03

A deep red polled bull from a cow purchased from Les Peterson a number of years ago. She has produced bulls that have gone into commercial herds and some good heifers that we have kept in our program. This bull is smooth from his front end to his back.



18

RED BULL
SHAROM FIDDLER 144F

04/03/2018 | STB 144F | [CAN]M481084

PAINTEARTH CASH 16C

LEHNE BRIGGS 62Z
PAINTEARTH HONEY 33S

SHAROM TULIP 144X

SHAROM STORMFRONT 81S
SHAROM SHY GAL 63S

BW: 100		JAN. 12/19 WT: 912									
CED	BW	WW	YW	MK	TM	CEM	ST	\$CEZ	\$BMI	\$F	
+12	+1.4	+52	+80	+24	+50	+9	+22	39.79	131.05	52.95	

Another good red bull from our reliable Shy Gal family. He is long, masculine and correct. He would make a great addition to your herd.



LOT 18

19

RED BULL
SHAROM FIRESTORM 249F

05/03/2018 | STB 249F | [CAN]M481085

SHAROM CRAFTSMAN 87C

SHAROM WOLVERINE 38W
MATLOCK WF MILLICENT 87Z

SHAROM ANGIE 249A

MATLOCK X-CALIBRE 26X
EIONMOR AUGUSTA 98X

BW: 105		JAN. 12/19 WT: 938									
CED	BW	WW	YW	MK	TM	CEM	ST	\$CEZ	\$BMI	\$F	
+6	+2.5	+59	+91	+17	+47	+5	+18	18.57	121.23	57.43	

There is a lot of interesting pedigrees in this bull's lineage. All of them lead to performance. This is the first time we have offered Sharom Craftsman 87C sons in a sale. Craftsman is from a long line of home raised bulls that have done nothing but good things for our program.



LOT 19

20

POLLED ROAN BULL
SHAROM FARMHAND 196F

07/03/2018 | STB 196F | X-[CAN]M481086

PAINTEARTH CASH 16C

LEHNE BRIGGS 62Z
PAINTEARTH HONEY 33S

SHAROM SPIRIT 196Z

SHAROM WOLVERINE 38W
EIONMOR HAZEL 49X

BW: 100		JAN. 12/19 WT: 886									
CED	BW	WW	YW	MK	TM	CEM	ST	\$CEZ	\$BMI	\$F	
+7	+2.9	+60	+91	+14	+44	+6	+17	21.26	120.24	56.27	

This bull is stout and thick from another mainstay cow in our herd. Her daughter Sharom Butterfly 276B has made a home at the good herd of Lilac Lane Farms. Farmhand should follow in his sister's footsteps and make himself right at home with you.



LOT 20

21

ROAN BULL
SHAROM FAST LANE 31F

12/03/2018 | STB 31F | [CAN]M481087

PAINTEARTH CASH 16C

LEHNE BRIGGS 62Z
PAINTEARTH HONEY 33S

MATLOCK SUGAR 31S

NICOL LARADO 3L
MATLOCK MERCEDES 65M

BW: 105		JAN. 12/19 WT: 910									
CED	BW	WW	YW	MK	TM	CEM	ST	\$CEZ	\$BMI	\$F	
+3	+3.7	+63	+94	+14	+45	+4	+16	7.20	113.17	56.44	

A larger framed bull out of Matlock Sugar 31S a foundation cow from our herd. This bull will add pounds to his calves at weaning time.



LOT 21



22

POLLED ROAN BULL
KENLENE EDDIE 5E

07/03/2017 | KLS 5E | X-[CAN]*23716

KENLENE COWBOY 4C

JSF PRESIDENT 59Z
KENLENE SANDY 2W

KENLENE ELIZABETH 1B

JSF PRESIDENT 59Z
KENLENE ELIZABETH 3Z

BW: 82										
CED	BW	WW	YW	MK	TM	CEM	ST	\$CEZ	\$BMI	\$F
+8	+1.8	+50	+76	+27	+52	+4	+18	25.87	126.39	53.21

This moderate frame, fancy heifer bull prospect, with a BW of 82 pounds may not be the biggest bull in the pen, but he certainly offers length, thickness, and style. From a stacked line of successful show cattle in his pedigree, if you are looking for a bull to produce some stylish prospect heifers or steers, this guy will likely not disappoint. Purchased at foot of dam from Ken's herd dispersal in 2017.



23

POLLED ROAN BULL
STARBRIGHT FERGUS 14F

11/01/2018 | ERN 14F | X-[CAN]M481020

LEHNE SUPREME 216C

UPHILL GUSSY 24Y
CREEKSIDE YOUNG LOVE 16Y

STARBRIGHT XENA 2X

STARBRIGHT CAPTAIN 17T
STARBRIGHT SADIE 21S

BW: 94 ADJ. WW: 662										
CED	BW	WW	YW	MK	TM	CEM	ST	\$CEZ	\$BMI	\$F
+14	+0.4	+54	+82	+22	+49	+7	+18	44.04	133.94	54.09

This dark roan future herd sire carries genetic traits strong in docility, milk, and easy fleshability. With his color and genetic background he is likely to throw some blue offspring when bred to blacks. His dam is an honest hard working moderate framed female, always weighing off a heavy calf in the fall. A beautiful roan full sister sold to Ross Skori in the 2017 All Star Classic. Shorthorn bulls are noted to be aggressive breeders. This guy will go out and get his job done!!



24

POLLED WHITE BULL
STARBRIGHT ROYALPIPER 21F

24/01/2018 | ERN 21F | X-[CAN]M481023

EIONMOR ROYAL PIPER 22T

DOWNSVIEW PROPHET 10M
EIONMOR ULTRA RUBY 99L

STARBRIGHT DUCHESS 21D

GLENFORD TURBO 25B
STARBRIGHT XENA 2X

BW: 98 ADJ. WW: 642										
CED	BW	WW	YW	MK	TM	CEM	ST	\$CEZ	\$BMI	\$F
+6	+0.9	+47	+66	+17	+41	+2	+18	23.45	110.50	50.57

If you are looking for some genetics to add to your program to make your cattle a little calmer, easier to work with, safer to handle, you can't go wrong with this docile herd sire prospect!! 21F Royal Piper has been an absolute delight to work with! A nice white package to give those highly sought after blues, out of a good milking, fertile 2 year old female, this guy offers some genetics any cattleman would be wise to implement into their purebred or commercial herd.



25

POLLED RWM BULL
STARBRIGHT SUPREME 28F

16/02/2018 | ERN 28F | X-[CAN]M481025

LEHNE SUPREME 216C

UPHILL GUSSY 24Y
CREEKSIDE YOUNG LOVE 16Y

SIX S PAULINE 12Z

SIX S VIPER 26X
SIX S PAULINE 15P

BW: 100 ADJ. WW: 657										
CED	BW	WW	YW	MK	TM	CEM	ST	\$CEZ	\$BMI	\$F
+12	+1.9	+58	+88	+19	+48	+6	+16	37.56	128.80	56.58

Another powerful herd sire prospect out of our Lehne Supreme 216C bull! His calves continue to impress me, both males and females, in their growth, thickness, and eye appeal. Supreme 28F should be a sure bet to put some pounds, length, and natural fleshing ability on your calves.



26

POLLED WHITE BULL
JANELL'S FALCON 70F

16/01/2018 | CCV 70F | X-[CAN]M481135

MURIDALE PRESIDENT 33B

ASH VALLEY PRESIDENT 1233
MURIDALE COLLEN 55S

JANELL'S DIANE 2C

MURIDALE TRADITION 115Y
JANELL'S MISSY 18U

BW: 63		WW: 733		YW: 1072						
CED	BW	WW	YW	MK	TM	CEM	ST	\$CEZ	\$BMI	\$F
+13	+0.1	+47	+70	+22	+46	+10	+14	45.74	135.80	52.92

This bull has been a standout since birth. He is an easy keeper and well balanced. A moderately stout made bull, he has herd bull potential written all over him.



LOT 26

27

POLLED WHITE BULL
JANELL'S FREDERIK 77F

25/01/2018 | CCV 77F | X-[CAN]M481133

MURIDALE PRESIDENT 33B

ASH VALLEY PRESIDENT 1233
MURIDALE COLLEN 55S

JANELL'S WHITE OAK 13C

MURIDALE TRADITION 115Y
JANELL'S GERALDINE 25Y

BW: 83		WW: 709		YW: 1048						
CED	BW	WW	YW	MK	TM	CEM	ST	\$CEZ	\$BMI	\$F
+7	+2.8	+55	+80	+18	+46	+5	+16	22.11	121.91	55.42

He comes from one of our stronger female lines. Long sided and smoothly made. He has caught our eye since birth.



LOT 27

28

POLLED ROAN BULL
JANELL'S FERNANDO 82F

07/02/2018 | CCV 82F | X-[CAN]M481134

MURIDALE PRESIDENT 33B

ASH VALLEY PRESIDENT 1233
MURIDALE COLLEN 55S

JANELL'S SARA 16C

MURIDALE TRADITION 115Y
JANELL'S QUEEN 3X

BW: 78		WW: 715		YW: 1008						
CED	BW	WW	YW	MK	TM	CEM	ST	\$CEZ	\$BMI	\$F
+13	+1.2	+50	+75	+22	+47	+9	+15	44.82	133.48	52.64

This bull is very moderate in his structure, has exceptional volume and is very sound on the move.



LOT 28

Using GE-EPDs with improved accuracy improves the reliability of the decisions breeders make and, ultimately, the rate of progress their selection program can deliver for cow/calf producers.

Bob Weaber - Kansas State University



29

POOLED ROAN HEIFER **CROOKED POST MINNIE 13F**

03/02/2018 | SLU 13F | X-[CAN]F697606

SASKVALLEY CURFEW 41C

SASKVALLEY ALAMO 8A
SASKVALLEY BLOSSOM 295A

CROOKED POST MINNIE 24C

CROOKED POST STOCKMAN 4Z
CROOKED POST MINNIE 10W

BW: 85		ADJ. WW: 632								
CED	BW	WW	YW	MK	TM	CEM	ST	\$CEZ	\$BMI	\$F
+15	-0.5	+60	+91	+25	+55	+9	+22	46.15	144.21	57.36

Her Stockman mother is a tank. Minnie 13F ranks in the top 15% of the breed for all 11 measured traits in the categories of Growth, Maternal, \$Value Indexes and top 1% for Stability. What a future here!!



30

POOLED ROAN HEIFER **CROOKED POST MARIA 14F**

06/02/2018 | SLU 14F | X-[CAN]F697592

SASKVALLEY CURFEW 41C

SASKVALLEY ALAMO 8A
SASKVALLEY BLOSSOM 295A

CROOKED POST MARIA 20D

CROOKED POST STOCKMAN 4Z
CROOKED POST MARIA 1R

BW: 86		ADJ. WW: 636								
CED	BW	WW	YW	MK	TM	CEM	ST	\$CEZ	\$BMI	\$F
+13	-0.6	+57	+85	+20	+49	+8	+16	42.68	128.81	54.17

From a first calved Stockman daughter, the Marias have been a mainstay family at Crooked Post for two decades with several staying employed well past 10 years of age.



31

POOLED ROAN HEIFER **CROOKED POST RED ROSE 24F**

21/02/2018 | SLU 24F | X-[CAN]F697588

SASKVALLEY CURFEW 41C

SASKVALLEY ALAMO 8A
SASKVALLEY BLOSSOM 295A

CROOKED POST RED ROSE 9D

BELL M DETAIL 130A
CROOKED POST RED ROSE 30B

BW: 80		ADJ. WW: 674								
CED	BW	WW	YW	MK	TM	CEM	ST	\$CEZ	\$BMI	\$F
+14	-0.2	+57	+85	+18	+46	+8	+17	44.13	130.89	55.21

From a really attractive Bell M Detail 130A daughter that several have attempted and failed to pry from our ownership. I don't believe they get much sweeter than this heifer.



"The genomic-enhanced EPDs in this sale catalog are powered by Neogen. We've made the investment in the world's most advanced DNA testing for seedstock cattle. Buy the right bulls for your goals with the highest-possible confidence in their quality and knowledge of their potential."

32

POLLED ROAN HEIFER
STARBRIGHT BEAUTY 7F

05/01/2018 | ERN 7F | X-[CAN]F696804

STARBRIGHT MIST'S STORM 1D

HC MIST'S RETURN 13R
SHAROM SNOWBELLE 308B

STARBRIGHT BLUES RED BEAUTY 6S

SPRYS TRUE BLUE Y033
DIAMOND MELBA NIAM 48L

BW: 108		ADJ. WW: 577								
CED	BW	WW	YW	MK	TM	CEM	ST	\$CEZ	\$BMI	\$F
+5	+2.5	+47	+67	+19	+42	+4	+17	17.36	106.95	49.69

A correct, growthy heifer out of my 13 year old Sprys True Blue daughter, who consistently produces a good one for the keeper pen! Several of her progeny have resided here for in herd use, and all have gone on to work in purebred or commercial herds. This beautiful roan heifer sells as a sale feature from the heart of my program, the type of heifer I like to retain in herd but have offered here to represent my program. Her maternal sister was my 2015 ASA donation heifer at the All Star Classic sale and she drew a lot of positive attention. She now resides in herd at Goldenview. 7F possesses the qualities I strive for in my program - docility, femininity, maternal strength, growth, correctness, and eye appeal. I believe this Beauty will not disappoint her new owner!



LOT 32

33

POLLED RED HEIFER
STARBRIGHT DELILAH 35F

02/03/2018 | ERN 35F | X-[CAN]F696815

LAZY H J CLASSIC 14C

EIONMOR IDEAL 64A
LAZY H J YUMA JACKIE 20A

LAZY H J NITRON DELILAH 24D

LAZY H J NITRO 9Y
GLORY-JAY YVETTE RAMONA 3Y

BW: 92										
CED	BW	WW	YW	MK	TM	CEM	ST	\$CEZ	\$BMI	\$F
+6	+2.6	+58	+88	+16	+45	+4	+19	17.17	118.05	55.40

Another March heifer that may not catch your eye come sale day but she is the type of female that will make you money!! Out of a 2 year old who gained 47 days on her 2nd calving date, after raising a solid correct heifer, and birthed an outstanding bull calf January 2019. Fertility, maternal traits, performance!! These kind of females just quietly do their job and raise you the good ones, with no fuss and no bother. Don't miss her on sale day!! She may be the buy of the sale just like her dam was for me.



LOT 33

34

POLLED RED HEIFER
STARBRIGHT JENNIFER 37F

03/03/2018 | ERN 37F | X-[CAN]F696817

LEHNE SUPREME 216C

UPHILL GUSSY 24Y
CREEKSIDE YOUNG LOVE 16Y

LEHNE JENNIFER 4A

LEHNE TROPHY 38Y
FOUR POINT JENNIFER 47W

BW: 92										
CED	BW	WW	YW	MK	TM	CEM	ST	\$CEZ	\$BMI	\$F
+7	+2.0	+61	+90	+18	+48	+1	+20	19.08	118.57	55.96

A thick made solid red heifer with genetics to mature into an easy keeping tank of a cow! So far she is looking the part. Her dam is an easy keeper that always maintains condition. A March heifer with a huge amount of depth and rib, Jennifer should make an extraordinary brood cow.



LOT 34

35

POLLED ROAN HEIFER
STARBRIGHT FERGIE 38F

08/03/2018 | ERN 38F | X-[CAN]*26106

STARBRIGHT CUPID 5C

UPHILL GUSSY 24Y
BRAEBANK TAX AMY 1A

KENLENE DRS FERGIE 15Z

MURIDALE BUSTER 14K
DR ROYAL 20T

BW: 88										
CED	BW	WW	YW	MK	TM	CEM	ST	\$CEZ	\$BMI	\$F
+8	+2.0	+66	+97	+16	+48	+5	+17	22.99	132.58	59.35

A fancy roan daughter out of Kenlene DRS Fergie 15Z, a cow who represents the breed extraordinarily well, and was no stranger to the show ring! This correct feminine heifer would look good on halter, following in her dams footsteps. This heifer just gets better and better as she matures.



LOT 35

Darrell & Brent Papuschak | Rocky Mountain House, AB

Darrell - Phone: 403-845-7963; Cell: 403-844-1698; darrellpapuschak@keyera.com | Brent - Phone: 403-844-7143; pappy_77@hotmail.com



36 RED NORELL MARKSMAN 705

MALE | JUNE 21 2017 | ZXI 5E | UNREGISTERED

RED CINDER MARKSMAN 53C 1863895

RED LONE STONE REVOLVER 21X
RED LONE STONE SUIJI LASS 52W

RED NORELL MAID 3'13 1777791

RED CINDER IN FOCUS 112W
RED SF MAID 57X

BW: 96 JAN. 27/19 WT: 1470

ZXI 5E is a big powerful very good footed bull his mother is a moderate framed cow with an excellent udder and feet. His sire was the high selling Red Angus bull in the 2016 On Target Bull Sale. One brother is working the Carl Black herd in Rocky.

38 RED NORELL EXPANSION 711

MALE | JULY 08 2017 | ZXI 11E | 2074516

RED SUNBERRY EXPANSION 40B 1890768

RED CC EXPANSION 5E
RED SIX MILE GLORIA 746W

RED NORELL MISS 502 1954685

RED TOWAW EXCEL 118Z
RED NORELL MISS 0'2

BW: 82 JAN. 27/19 WT: 1440

ZXI 11E is out of a first calf heifer that goes back to a cow we purchased out of the Meadow Creek Dispersal Sale. This cow family is the largest group in our herd. The sire 40B is a paternal brother to Red Towaw Indeed 104H, a major player in the Six Mile herd. Gloria 746W was a \$23,500 half interest cow out of Red Round Up. This bull could be used on heifers.



37 RED NORELL EXPANSION 709

MALE | AUGUST 02 2017 | ZXI 9E | 2018743

RED SUNBERRY EXPANSION 40B 1890768

RED CC EXPANSION 5E
RED SIX MILE GLORIA 746W

RED NORELL MISS 220 1708042

RED CINDER IN FOCUS 112W
RED MEADOW CK BJ MISS 64S

BW: 96 JAN. 27/19 WT: 1420

ZXI 9E is a good cow bull out of the BJ Miss cow family. He should sire high performing steer calves and top quality replacement females. We have three sisters to his dam in our herd.

39 RED NORELL EXPANSION 712

MALE | AUGUST 07 2017 | ZXI 12E | 2018745

RED SUNBERRY EXPANSION 40B 1890768

RED CC EXPANSION 5E
RED SIX MILE GLORIA 746W

RED NORELL FLORESS 11'17 1653307

RED NORELL THUMP 9'13
RED KBJ MISS BLAZE 1004U

BW: 98 JAN. 27/19 WT: 1370

ZXI 12E is a smooth made and good footed cow bull. He goes back to the Expansion 5E bull on his sire and dam. His dam is a good honest Red Angus cow. We used another son who unfortunately was injured three days into the breeding season.



40 RED NORELL COPPER POT 718

MALE | AUGUST 24 2017 | ZXI 18E | 2018749

RED SUNBERRY EXPANSION 40B 1890768 RED CC EXPANSION 5E
 RED SIX MILE GLORIA 746W
 RED BRYLOR RSTD COPPER QUEEN 2 1477190 RED FINE LINE MULBERRY 26P
 RED CV COPPER QUEEN 501K

BW: 82 JAN. 27/19 WT: 1270

18E is a smaller framed bull out of a very good Mulberry cow. This cow has the best feet and udder on the farm. The Mulberry 26P bull has had a major impact on the Red Angus world. We have sold four sons off this cow. He would be a good heifer bull.

42 RED NORELL MISS 720

FEMALE | AUGUST 28 2017 | ZXI 20E | 2018750

RED SUNBERRY EXPANSION 40B 1890768 RED CC EXPANSION 5E
 RED SIX MILE GLORIA 746W
 RED NORELL MISS 0'2 1594793 RED SECTION ONE CUB 113S
 RED MEADOW CK BJ MISS 64S

BW: 76 JAN. 27/19 WT: 990

ZXI 20E is the favorite of the heifer pen - she is everyone's pick. She is out of the BJ Miss cow family, her dam is a big volume Cub daughter. If you are interested in how she should work look at the 711 bull selling as Lot 38, he is out of her sister



41 RED NORELL TAWNYA 717

FEMALE | AUGUST 22 2017 | ZXI 17E | 2018748

RED SUNBERRY EXPANSION 40B 1890768 RED CC EXPANSION 5E
 RED SIX MILE GLORIA 746W
 RED COUNT RIDGE TAWNYA 78C 1853286 RED CR TOPNOTCH 26X
 RED CR TAWNYA CHEROK 54U

BW: 91 JAN. 27/19 WT: 1010

ZXI 17E is a good heifer out of the 40B bull and a heifer we purchased from Count Ridge Red Angus, we have a sister in the replacement pen again this year. The Expansion 5E bull is known for his daughters.

43 RED NORELL QUEEN 723

FEMALE | SEPTEMBER 06 2017 | ZXI 23E | 2052839

RED SUNBERRY EXPANSION 40B 1890768 RED CC EXPANSION 5E
 RED SIX MILE GLORIA 746W
 RED COUNT RIDGE QUEEN 150C 1853347 RED ROD OSCAR 52U
 RED CR QUEEN 4S

BW: 86 JAN. 27/19 WT: 1050

ZXI 23E is another good daughter out of the 40B bull and a heifer from Count Ridge Red Angus. All these 40B daughters will make good cows.



A group of outstanding Shorthorn influence Red Angus cross heifers on offer here from Dave and Monique Kufeldt of Ardmore, AB.

Deep ribbed easy fleshing, long spined with all the fantastic maternal qualities you will love.

These heifers were born March 25-April 4, 2018, weaned mid November and have been on a full herd health program including Ivomec and booster injections of Pyramid PF5 Presponse & Fermicon 7/Somnugen Nov. 2018.



Sire: JANELL'S CASPER CCV 21D

A group of fancy, good performing Shorthorn cross open females. They are mostly sired by the Janell bull that Duane Daines purchased at the 2017 Sale.

1st Western Prime

Shorthorn & Red Angus BULL & FEMALE SALE

View the catalog online @ donsavageauctions.com

BIRTH WEIGHT & CALVING EASE

University studies in Wyoming and data from Montana and Colorado lend credence to the following conclusions:

1. The birth weight itself influences calving ease by 65%.
2. The female has 60-70% influence on birth weight of her calf.
3. The bull has 30-40% influence on birth weight of his progeny.
4. Pelvic measurement and angle as well as the shape of the calf have 35-40% influence on calving ease.
5. Length of gestation greatly affects birth weight. A fetus can gain over one pound per day in the last days of gestation.
6. Weather and temperature the last 30 days affect the length of gestation.
7. Size and maturity of the cow influence calving ease.

Most commercial producers do not take birth weights. Guessing is as inaccurate as driving with a broken speedometer - what's thought to be 55 mph may in fact be 65 or 70 mph, and what's thought to be 70-80 lb. may actually be 80-90 lb.

Remember, everything is relevant. Increased growth, frame and performance will increase BW. A longer-bodied calf will weigh more. If a calf is expected to have genetics for growth, it will display this prior to birth as well as after. As a rule of thumb, it takes a calf weighing 85 lb. at birth to finish at 1200-1250 lb. A cow should easily give birth to a calf weighing 8% of her own body weight. Thus a 1200 lb. cow should give birth to a 96 lb. calf with ease.

Continued selection for light birth weights will ultimately reduce the mature sizes and performance of your cattle.

The traits that will benefit most from addition of DNA information in genetic predictions are those that are lowly heritable, difficult or expensive to measure, measured late in life, and those that are sex-specific. Combining phenotypic and molecular data can lead to faster genetic change.

Matt Spangler - University of Nebraska

Bull Breeding Guarantee

All guarantees are between the buyer and the seller.

All bulls offered and sold, except calves at side, are guaranteed breeders irrespective of age. All bulls after reaching the age of 15 months must be capable of settling 7 head or 75% of the eligible normal healthy breeding age females he is running with for a 90 day period, whichever is the lesser.

No guarantee regarding the freezing ability of a bull's semen is made or implied in the sale of a bull unless covered specifically in a written contract.

In the case of a complaint regarding a bull's breeding guarantee the buyer wishes to enforce the provisions of the Code shall report the same in writing to the seller enclosing a report prepared by a licensed veterinarian within 6 months of purchase or the time the bull reaches the age of 15 months whichever occurs later. The bull shall be returned to the seller at the buyer's expense. The seller may replace the bull with a bull of equal quality or refund the purchaser's price of the bull or he may attempt to prove the bull a breeder under the terms of this clause within 6 months. If the bull is proven to be a breeder within the 6 months provided he shall be returned by the seller to the buyer and the buyer's expense. If he is not proven to be a breeder then replacement or at the option of a seller a refund is mandatory. Under no circumstances will a seller be liable for more than the purchase price of the animal sold.

By genotyping replacement-heifer candidates, breeders can improve the heifer's EPD accuracies about as much as the progeny data resulting from a female's whole lifetime of production. The best part is you can know a replacement heifer's estimate of genetic merit as if she's been in production for years, all before she's even weaned from her dam.

Bob Weaber - Kansas State University



108 Flett Drive, Airdrie, Alberta T4B 1N2
Phone: 403/948-3520 Fax: 403/948-2917
www.donsavageauctions.com
e-mail: don@donsavageauctions.com



RETURN POSTAGE GUARANTEED
PORT DE RETOUR GARANTI

1st Western Prime

Shorthorn & Red Angus BULL & FEMALE SALE



Monday
APRIL 1
2019

1 pm MDT • Innisfail Auction Mart • Innisfail, Alberta, Canada