

V&V FARMS
SHARE THE HERD
Gelbvich Sale
NOVEMBER 23, 2013

Expect nothing but the best!

Welcome...

We would like to invite you to our "Share the Herd" Sale. The time has come after 20 years in the Purebred industry to lessen the work load and we are looking forward to more family time. Our commitment that we have to grain production and our commercial herd will continue. It is with mixed emotions that we offer our purebred herd for sale, but we will be continuing on with our interest in the breed. Three years ago, Stone Gate Farm started showing our cattle, and we will continue our alliance with Darrell and Leila Hickman on a number of our females. V & V Farms will still be investing in Gelbvieh seed stock both on our share cattle and bulls for our expanding commercial herd.

Breeding quality Gelbvieh cattle has been a passion of ours. We have purchased top females in the breed and added the best herd sires available. With our AI and embryo transplant program, we have advanced to the forefront. This great breed of cattle has allowed us to meet people throughout the cattle business and we have developed many life-long friendships.

All bred females and the 2013 bull and heifer calves will sell. We have gone through our herd and eliminated the stock which do not measure up to our standards. All bred females are pregnancy tested. Our herd health program is continuous and all vaccinations and ivermectin protocols are current.

Every year we have strived to produce a better pen of bulls for our purebred and commercial customers. Bulls with strong maternal traits, calving ease, performance and carcass quality. Bulls that are easy fleshing, dark red in color and an abundance of hair in a structurally sound and functional package. We have sold a number of bulls annually to both seed stock producers and astute commercial cattlemen during our 12 annual bull sales. We have produced these bulls from the best possible females which we have retained in our herd. We certainly appreciate the customers that have supported our program and we wish you success with a prosperous future in the beef industry.

The females offered are eye appealing, angular, deep bodied with good feet and legs. They have the ability to add performance and thickness with strong maternal traits into their offspring. The cow herd is young and fertile, the kind that will produce top bulls and replacement females. Our yearling heifers are AI'd to outstanding breed leading sires and all females are bred to sires that will add qualities that will be appreciated throughout the industry.

Please join us on November 23rd and be a part of our "Share the Herd" Sale. The sale cattle will be available for viewing on Friday, November 22nd. The sale will be a video sale and will be on the internet as well. Lunch will be served throughout the day. For more information please feel free to contact us at 403-548-6678 or any of our capable sales staff.

Sincerely,

Vern and Vivienne Pancoast & Family



V & V Farms

Vern & Vivienne Pancoast
Box 37, Redcliff, AB T0J 2P0
Ph: 403-548-6678
Fax: 403-548-6955
Email: vvfarms@xplornet.com

V & V FARMS

SHARE THE HERD

Gelbvieh Sale

NOVEMBER 23, 2013

Sale Date & Time:

Saturday, November 23, 2013
11:00 am MST

Sale Location:

At The Farm -- Redcliff, Alberta
(West of Redcliff on Hwy #1, turn west on Hwy #524
Hays-Rolling Hills Hwy, 5 Km West, 2 Km North on Range Road
74 to V & V Farms)

Accommodations:

Medicine Hat Lodge – 1-800-661-8095

Quote V & V Farms Group 589433

Days Inn - 403/580-3297

Quote V & V Farms

All booking must be done prior to November 8, 2013

General Information:

- Pre-Sale viewing Friday, November 22, 2013
- Come early and enjoy complimentary lunch
- All cattle are DNA parentage verified
- Financing options will be available. Contact Vern or Don at least 3 days prior to sale
- All sale cattle must be picked up by November 27, 2013
- Livestock Insurance is available. It is recommended that you insure your purchases
- Export cattle will be tested as soon as possible after the sale. When full payment has been received trucking arrangements will be made.
- All cows and calves have had Ivomec and are up to date on their vaccinations.

Can't make it to the sale? Watch & Bid Online.

With DLMS you can Watch, Listen & Bid on your computer just like you were there with online bidding over the internet

Instructions for Viewing And Bidding At the Sale

Visit www.dlms.ca, Fill out the registration form located under registration and sign-up for your free user account to select a username and password.

BIDDERS - To be approved as a bidder, Log in and click BUYER APPROVAL tab, select the sale you are interested in bidding at and click sign up.

For more information or for help getting approved
Call DLMS - Mark Shologan - 780-699-5082

Direct Livestock Marketing Systems
We're Making the Connection

DLMS
www.dlms.ca

To find an agent or sale near you today
visit www.dlms.ca

Purebred Sales • Daily Presort Sales
Direct Off-farm Sales every Thursdays at 10:00 am

Selling 260 Head! • Polled • Red • Black

Bred Cows Bull Calves

Bred Heifers Herd Sire

Heifer Calves

Sale Day Phones:

403/580-9532 • 403/580-9504

403/803-4434 • 306/222-8210

Special Representatives:

Darrell Hickman, President CGA

Wendy Belcher, Secretary/Manager CGA

Cordy Cox, President Gelbvieh Association of AB/BC

Lee Wirgau, President Man/Sask Gelbvieh Assn.

Sale Staff:

Don Savage, Auctioneer 403/803-4434

Rod McLeod, Ringman 403/540-7986

Craig Flewelling, Ringman 403/224-2111

John Copithorne, Ringman 403/650-7327

Sale Consultants:

Kirk Hurlburt 306/222-8210

Ryan Hurlburt 306/292-9812

This will be a video sale with no animals entering the ring. Videos are available to view online at www.dlms.ca

Don Savage Auctions

108 Flett Drive, Airdrie, AB T4B 1N2

Ph: 403-948-3520 Fax: 403-948-2917

Email: don@donsavageauctions.com

www.donsavageauctions.com

Auctioneer & Sale Managers Welcome...

Welcome to V & V Farms "Share the Herd" Sale. Vern and Vivienne have been in the Gelbvieh business for over 20 years, since they purchased their first purebred female. They have maintained a major presence in the livestock industry.

I have had the pleasure of working with the Pancoasts since they first started with Gelbvieh and have been honoured to sell and manage their 12 consecutive spring bull and female sales. They have made a large impact on the success of the Gelbvieh breed in Canada, attending the sales, field days and Vern's involvement with the associations.

I have just returned from one of many tours of their program. The females are feminine, very productive with plenty of volume and ease of fleshing. These are top end females that will continue to embrace the importance of the Gelbvieh breed to the seed stock industry.

Over the years V & V Farms have been very successful at major shows. They have joined forces with Stone Gate Farm this past couple of years to showcase their breeding program. At the 2012 National Show V & V Farms exhibited the Reserve Grand Champion Bull and the Reserve Senior Heifer Calf Champion. These same good genetics are on offer November 23rd.

At V & V Farms they believe strongly in DNA testing to guarantee parentage and to verify to their customers the quality of their genetics. Vern and Vivienne are dedicated to the Gelbvieh breed and will continue to use Gelbvieh bulls in their commercial breeding program.

At V & V Farms a very important factor has been the production of top commercial bulls for their customers. Each year they have hosted one of the most successful Gelbvieh Bull Sales in the breed. The females selling are dams, grand dams and maternal sisters to these great bulls. Vern and Vivienne have realized it is time to reduce their work load and are pleased to offer these breed leading females.

As you will note in the catalogue this is a video sale. Should you wish to bid on line the video can be viewed at www.dlms.ca six weeks prior to the sale date.

I recommend these cattle to the most discriminating cattlemen. If you are looking for top of the breed females to take your program to the next level this sale is a must.

We look forward to seeing many Gelbvieh friends on November 23, 2013.

If you have any questions about the cattle please contact the Pancoasts or me. If you are interested in purchasing bulls and females on November 23rd, but are unable to be with us sale day, please contact me and your order will be handled in a professional manner.

Yours truly,

Don Savage

 **Don Savage Auctions**

108 Flett Drive, Airdrie, AB T4B 1N2
Ph: 403-948-3520 Fax: 403-948-2917
Email: don@donsavageauctions.com
www.donsavageauctions.com



General Information

Terms of Sale: Are cash or cheque at par, payable to the clerks of the Sale on sale day. U S funds will be accepted at the current rate of exchange. No release will be given until satisfactory settlement has been made. Full payment shall constitute a final sale and then registration papers will be transferred.

Health: All Sale cattle meet the Canadian Health standards. Foreign buyers are responsible for knowing the current Health standards of their country.

Guarantee: All Sale cattle are guaranteed under the terms and conditions of Sale as recommended by the Canadian Gelbvieh Association.

Mail Bids: If you are unable to attend the Sale, but wish to make a purchase, please feel free to contact any of the Sales Staff or Don Savage Auctions and your order will be handled in a professional manner.

Insurance: Ownership commences to the purchaser as soon as the animal is sold. Insurance agents will be present sale day to look after your insurance requirements.

Although every precaution will be taken to protect the safety and comfort of the buyers neither Don Savage Auctions nor the consignors assume any responsibility in these matters and disclaims any liability, legal or otherwise, in the event of an accident or loss of property.

Every animal offered is "as they are" on sale day with no further guarantee expressed or implied. Every precaution will be made to announce known blemishes from the auction stand.



LOT 3 VV ZELINDA 20Z

FEMALE • BALANCER 50 • RED • POLLED

VV Balancer 7Z

CDGV147141 • VV7Z • 01/31/2012



CE	BW	WW	YW	MK	TM	CED	YG	CW	REA	MB	FT
9	1.0	55	89	24	52	5	-0.15	25	0.27	-0.05	-0.05

ROBN RED RMJ REDMAN 1T
 CBM RED LAZY MC WRANGLER 3W
 CBM RED LAZY MC DUCHESS 39T

IMP RED 5L NORSEMAN KING 2291
 CFCC CROWFOOT KURUBA 4033P
 CBM LAZY MC BOOM 44R
 CBM RED LAZY MC DUCHESS 79R
 DL JEN-TY RAMBO 205P
 VV LOIS 21L
 TSCC TWIN STAR ROSARRIO 670R
 NLG PLD MERCEDES 10M

VCR SIX PACK 25S
 VV XTRA BEST 123X
 NLG PLD NORTHERN TOFFEE 35T

AI MAY 2, 2013 TO SLC MASTER PLAN 191U
 P/E MAY 6 TO JULY 23, 2013 TO SLC TOUCHDOWN 66W

BW	82
WW	477
YW	991

V V 7Z is a great example of what Balancers can represent to the cattle business. She is sweet made and will transmit that competitive edge into her calves. Her dam sells as lot 73. Her sire was a high selling bull in the Clint Morasch's sale.



LOT 1 VV BALANCER 7Z

FEMALE • PUREBRED 94 • RED • POLLED

VV ZZZZ Time Tea 14Z

CDGV146950 • VV14Z • 02/02/2012



CE	BW	WW	YW	MK	TM	CED	YG	CW	REA	MB	FT
5	2.4	68	93	27	61	0	-0.22	28	0.26	-0.32	-0.09

WTM TWIN STAR PROSPER 51P
 LCR STAR PROSPECT 155S
 LCD NICOLE 155N

SLC FREEDOM 178F ET
 TPG POLLED FLAXEN 51F
 VCR VALE COUNTRY PLD LAD 9L
 LCD HOLIDAY 154H
 SLC FREEDOM 178F ET
 TSCC TWIN STAR 238H
 TSCC TWIN STAR HERITAGE 227H
 CVG CYPRESS VIEW KYLIE 30Z

LCD PRISM 238P
 LCR TEXAS TEA 762T
 LCD KATRINA 162K

AI MAY 2, 2013 TO ATC GOLD STAR POLLED 5D
 P/E MAY 6 TO JULY 23, 2013 TO VS ZZ TOP 6Z

BW	84
WW	579
YW	1070

This dark red gal was bred by Ray Davison and we are fortunate to be able to have a number of these top females. V V 14Z's dam sells as lot 151.

FEMALE • PUREBRED 94 • RED • POLLED

VV Zelinda 20Z

CDGV146953 • VV20Z • 02/04/2012



CE	BW	WW	YW	MK	TM	CED	YG	CW	REA	MB	FT
6	2.1	64	88	26	58	9	-0.18	24	0.16	-0.19	-0.08

CZM FAIRYVALE XCELERATOR 1X
 ATC GOLD STAR POLLED 5D
 ATC GOLD STAR ET 92A

VSD GOLD DUST HI HOPE
 CZM FAIRYVALE HOLLY
 ATC GOLD STAR 4W
 RLR EMMA 100G
 VV RENASANCE JESTER 79R
 TSCC TWIN STAR POLLY 906P
 SBR 2085L MARCUS P13
 SLC SADIE 47P

VV UR JEST'N'TIME 72U
 VV XPECT CASH 168X
 VV TRUDY 95T

AI MAY 2, 2013 TO SLC FREEDOM 178F
 P/E MAY 6 TO JULY 23, 2013 TO SLC TOUCHDOWN 66W

BW	82
WW	596
YW	1066

What an eye catching individual; dark red in colour in a deep bodied, feminine package. Her dam is lot 80 and the dams mating to "5D" is all the proof required as to what these top Gelbvieh genetics can accomplish.



LOT 4 FRSQ MISS SILVER 26Z

FEMALE • PUREBRED 94 • RED • POLLED

FRSQ Miss Silver 26Z

CDGV146530 • FRSQ26Z • 01/24/2012



CE	BW	WW	YW	MK	TM	CED	YG	CW	REA	MB	FT
10	0.4	62	80	25	56	6	-0.25	17	0.40	-0.22	-0.06

JRI TOP SECRET 253M75 ET
 JRI HOME BREW 213W67 ET
 JRI MS PLD GRAND PRIX 213G57

JCGR BAR GT LOUIE 2J
 VV SILVER MIST 29S
 VV LUCIOUS 4L

JRI PLD FREE AGENT 125J3
 JRI MS PLD FRONTIER 253J60
 JRI PLD GRAND PRIX ET
 JRI MS PLD LIBERTY 213D47 ET
 GKT BUD 11G
 049C
 GKT BOO BOO 155E
 ATC GOLD STAR PLD JUSTINE 6J

AI MAY 2, 2013 TO SLC FREEDOM 178F
 P/E MAY 6 TO JULY 23, 2013 TO SLC TOUCHDOWN 66W

BW	84
WW	650
YW	938

Wow! What a great genetic package. 26Z was purchased as a heifer calf at last year's Wish List Sale. Her dam was the high selling female at the Showcase Sale and her sire is doing an awesome job at Foursquare Gelbvieh.



LOT 6 VV ZINNIA 43Z

FEMALE • PERCENTAGE 50 • RED • POLLED

VV Balancer 36Z

CDGV147099 • VV36Z • 02/07/2012



CE	BW	WW	YW	MK	TM	CED	YG	CW	REA	MB	FT
6	1.0	54	74	26	53	4	-0.11	15	0.19	0.05	-0.03

JDPD ROLEX 151M
 JDPD MOVADO 407T
 HAD PRINCESS OF ALOT 407P

HAD SLEEP TIGHT ET
 VTG VISTA MS FREEDOM 0151K
 HAD LANCELOT 795L
 HAD 140L

AI MAY 2, 2013 TO V V UBET ON ME 160U
 P/E MAY 6 TO JULY 23, 2013 TO SLC TOUCHDOWN 66W

BW	80
WW	526
YW	991

FEMALE • PERCENTAGE 75 • RED • POLLED

VV Zinnia 43Z

CDGV146963 • VV43Z • 02/10/2012



CE	BW	WW	YW	MK	TM	CED	YG	CW	REA	MB	FT
2	5.3	68	101	24	59	2	-0.13	38	0.23	-0.14	-0.07

SPG SUNNY PLAIN TOPPER 702T
 VV WHO'S NEXT LADIES 182W
 AR JENNY 47P

LPRA RED LLENROC RISING STAR 18L
 FUN SUGAR 627S
 FUN PARTY ALIVIA 624M

AI MAY 2, 2013 TO ATC GOLD STAR POLLED 5D
 P/E MAY 6 TO JULY 23, 2013 TO VS ZZ TOP 6Z

BW	98
WW	556
YW	1156

This gal has loads of style, balance and genetic power. Her sire is represented by two high selling individuals: SPG 702T and the great maternal values of AR Jenny 47P. Her dam sells as lot 161. AR 47P sons have sold to the Richardsons and Ron Conner.



LOT 7 VV ZUGER TOFFEE 55Z

FEMALE • PUREBRED 94 • RED • POLLED

VV Zuger Toffee 55Z

CDGV146970 • VV55Z • 02/13/2012



CE	BW	WW	YW	MK	TM	CED	YG	CW	REA	MB	FT
8	1.0	57	68	33	61	6	-0.37	11	0.49	-0.33	-0.09

JCGR BAR GT LOUIE 2J
 VV XTREME RELAY 62X ET
 AR LADY GRIMSHAW 1G

GKT BUD 11G
 049C
 FLGY 1110A
 AR LADY ERIN 21E
 JCGR BAR GT LOUIE 2J
 LTC RIDGE STAR PLD KELLY 59K
 GCC REDNECK 2F
 DVE DAVIDSON MISS SUGAR 50H

VV RALLY LOU 16R
 VV SUGAR TOFFEE 127T ET
 GCC RED SUGAR 59K

AI MAY 2, 2013 TO ATC GOLD STAR POLLED 5D
 P/E MAY 6 TO JULY 23, 2013 TO VS ZZ TOP 6Z

Like mother like daughter. 55Z will become an awesome producing female just like her ET dam – lot 144. She incorporates the top proven bloodlines of Louie, Lady Grimshaw, Rally Lou and the great Red Sugar line. Both sides of her pedigree are from V & V Farms ET program.

BW	82
WW	498
YW	960

FEMALE • PUREBRED 94 • RED • POLLED

VV Zhez A Temptation 56Z

CDGV146971 • VV56Z • 02/13/2012



CE	BW	WW	YW	MK	TM	CED	YG	CW	REA	MB	FT
12	-0.2	54	77	19	46	8	-0.19	15	0.15	-0.33	-0.07

SLC FREEDOM 178F ET
 JRI PLD FREE AGENT 125J3
 JRI MS PLD GRAND PRIX 125G3

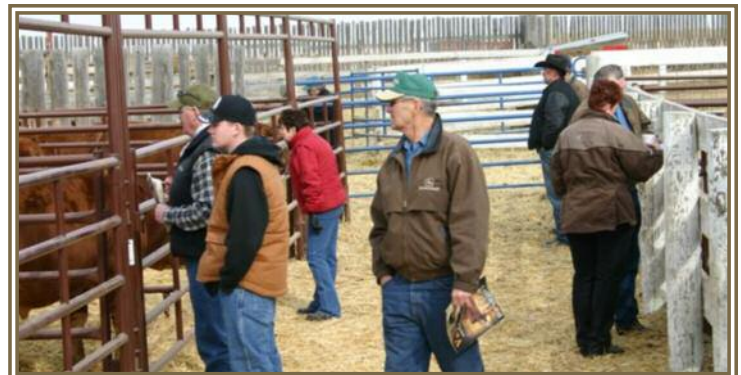
VAA LEACHMAN NEW DAY 205B
 BB MISS 61Y
 JRI PLD GRAND PRIX ET
 JRI MS PLD SUMMIT 125D3
 ARN SIR ARNOLD B921
 GR BAR GR GILDA 181G
 MLLC M/L ADVANTAGE 345C
 GR BAR GR PRAIRIE FIRE 70F

GR BAR GR RED ROGUE 181P
 GR BAR GR TEMPTATION 3T
 GR BAR GR MOONFIRE 70M

AI MAY 2, 2013 TO SLC FREEDOM 178F
 P/E MAY 6 TO JULY 23, 2013 TO SLC TOUCHDOWN 66W

Here is a great heifer that possesses amazing thickness in a clean, attractive design. Her dam, lot 134, is an attractive, deep thick bodied top producing female. The Free Agent breeding on the sire's side delivers that added bonus.

BW	86
WW	553
YW	1059





LOT 9 VV ZHEZ A LADY 60Z



LOT 10 VV ZING ALONG WITH ME 61Z



REF SLC FREEDOM - SERVICE SIRE TO LOT 10

FEMALE • PERCENTAGE 75 • RED • POLLED

VV Zhez A Lady 60Z

CDGV146973 • VV60Z • 02/14/2012

CE	BW	WW	YW	MK	TM	CED	YG	CW	REA	MB	FT
7	-1.1	46	61	25	48	8	-0.21	4	0.17	0.02	-0.06

CZM FAIRYVALE XCELERATOR 1X
 ATC GOLD STAR POLLED 5D
 ATC GOLD STAR ET 92A

SLC TYE 476T ET
 VV XQUISITE LADY 138X

VSD GOLD DUST HI HOPE
 CZM FAIRYVALE HOLLY
 ATC GOLD STAR 4W
 RLR EMMA 100G
 SLC MASTER PLAN 134N
 SFL SLC MS CENTENNIAL 188C

AI MAY 2, 2013 TO SLC FREEDOM 178F
 P/E MAY 6 TO JULY 23, 2013 TO SLC TOUCHDOWN 66W

V V 60Z is a super heifer. You won't find a young female with more natural thickness and depth of body. Her sire "5D" continues to serve the Gelbvieh breed well, leaving awesome daughters just like 60Z.

BW 70
WW 471
YW 981

FEMALE • PUREBRED 94 • RED • POLLED

VV Zing Along With Me 61Z

CDGV146974 • VV61Z • 02/15/2012

CE	BW	WW	YW	MK	TM	CED	YG	CW	REA	MB	FT
10	-0.6	60	72	27	57	7	-0.22	11	0.26	-0.26	-0.06

SPG SUNNY PLAIN TOPPER 702T
 VV WHO'S NEXT LADIES 182W
 AR JENNY 47P

BTI EXTRA 2106K ET
 DF TRUFFLE 22T ET
 AR JENNY 47P

AI MAY 2, 2013 TO SLC FREEDOM 178F
 P/E MAY 6 TO JULY 23, 2013 TO SLC TOUCHDOWN 66W

Here is one broody made, feminine female that is easy doing with loads of style and future. Just check out the top parentage throughout her pedigree. Her dam was a top selling ET heifer when added into the V & V program. A maternal brother sold to RPS Gelbvieh.

BW 68
WW 536
YW 938





LOT 12 VV ZARA 88Z

FEMALE • PUREBRED 94 • RED • POLLED

SA Birch's Malibou 75Z

CDGV144840 • SA75Z • 02/17/2012



CE	BW	WW	YW	MK	TM	CED	YG	CW	REA	MB	FT
11	1.2	62	85	35	66	8	-0.27	22	0.39	-0.31	-0.08

DEG PESO 286P
 VV TIREE 150T
 DTJ FANCY NANCY 506N

MMM CALBERTA RESOURCE 8307H
 DL JEN-TY MALIBOU 162S
 DL JEN-TY GOLD CHARMER 40H

AI MAY 2, 2013 TO ATC GOLD STAR POLLED 5D
 P/E MAY 6 TO JULY 23, 2013 TO VS ZZ TOP 6Z

This attractive, feminine female was purchased from the Birch family – Lomond, AB. Her sire, V V Tiree 150T, has done a tremendous job at Twin Bridge Farms. Do not miss her on sale day.

BW 86
 WW 584
 YW 858

DEG MONAHAN 293M
 DEG JYSSICA 286J
 EGL PABST L011 ET
 SLC MISS FANCY 135H
 JRI PD RESOURCE 197E51
 MMM CALBERTA MMM 308D
 LCS POLLED CASH 242A
 WBL ALTAGEN DEBORAH 1A

FEMALE • PUREBRED 94 • RED • POLLED

VV Zara 88Z

CDGV147161 • VV88Z • 02/20/2012



CE	BW	WW	YW	MK	TM	CED	YG	CW	REA	MB	FT
8	0.0	60	83	28	58	7	-0.28	19	0.43	-0.28	-0.08

JHL LCHMN CHRONICLE 8011H
 FRL FIR RIVER RANALDO 38U
 FRL FIR RIVER CHERRY 73R

SPG SUNNY PLAIN TOPPER 702T
 VV WATERBUM 163W
 VV SUPERBUM 19S

AI MAY 2, 2013 TO ATC GOLD STAR POLLED 5D
 P/E MAY 6 TO JULY 23, 2013 TO VS ZZ TOP 6Z

V V 88Z is another bred heifer that we are proud to offer. Her dam is lot 108 and one of the top young females in our herd. Her sire, FRL 38U, has sired many great ones at V & V including the Reserve National Champion Bull in 2013.

BW 78
 WW 494
 YW 980

TLR COCOA 35C
 LCHMN OMC GV F8038
 JCGR BAR GT LOUIE 2J
 CCF GREAT LAKES KATIE 42K
 SPG PLD SUNNY PLAIN HERO
 SPG SUNNY PLAIN JOYCE 127R
 JCGR BAR GT LOUIE 2J
 PAN PANDA KISMET 172K

FEMALE • PUREBRED 94 • RED • POLLED

VV Zeka 97Z

CDGV147003 • VV97Z • 02/21/2012



CE	BW	WW	YW	MK	TM	CED	YG	CW	REA	MB	FT
9	0.3	51	63	35	60	8	-0.28	7	0.33	-0.21	-0.07

CES DECKA OUTBACK 75S
 SLC TOUCHDOWN 66W
 HL PLD MISS STALLONE 2R

SLC MASTERPLAN 512T
 FRL FIR RIVER SEKA 220X
 FRL FIR RIVER PARIS 45U

AI MAY 2, 2013 TO V V ULTRAMATIC 144U
 P/E MAY 6 TO JULY 23, 2013 TO SLC TOUCHDOWN 66W

Here is a daughter of the high selling bull SLC 66W and out of a Fir River bred dam by their excellent Master Plan son. There is lots of maternal value in this gal's pedigree. Dam sells as lot 85

BW 78
 WW 564
 YW 934

CES DECKA PRECISION 144P
 CES DECKA HARPER 150L
 ARN SIR ARNOLD K114
 DVE DAVIDSON MS STALLONE 88H
 SLC MASTER PLAN 134N
 SLC MISS BLACK LASS 120H
 EGL PABST L011 ET
 DVE DAVIDSON MS JULIO 48R

FEMALE • PUREBRED 88 • RED • POLLED

VV Zest For Life 101Z

CDGV147006 • VV101Z • 02/22/2012



CE	BW	WW	YW	MK	TM	CED	YG	CW	REA	MB	FT
6	2.8	61	84	30	61	7	-0.22	23	0.29	-0.29	-0.07

SPG SUNNY PLAIN TOPPER 702T
 VV WHO'S NEXT LADIES 182W
 AR JENNY 47P

VV RENASANCE JESTER 79R
 VV U'R JESTING MORENA 77U
 FUN FREE MORENA 51M

AI MAY 2, 2013 TO ATC GOLD STAR POLLED 5D
 P/E MAY 6 TO JULY 23, 2013 TO VS ZZ TOP 6Z

V V 101Z is a neat and tidy moderate framed daughter of V V 182W and out of a good producing dam that sells as lot 125. A sister sold to Severtson Land & Cattle – Innisfail, AB.

BW 82
 WW 480
 YW 1009

SPG PLD SUNNY PLAIN HERO
 SPG SUNNY PLAIN JOYCE 127R
 AR COLE 26M
 AR 63K
 VV BOODOM 5M
 LTC RIDGE STAR PLD JEST 280J
 SLC FREEDOM 178F ET



LOT 15 VV MANDY 108Z



LOT 16 VV ZINFANDEL 111Z



REF FRL FIR RIVER RANALDO 38U
 SIRE OF SEVERAL LOTS IN THE SALE

FEMALE • PERCENTAGE 75 • RED • POLLED

VV Mandy 108Z

CDGV147257 • VV108Z • 02/24/2012

CE	BW	WW	YW	MK	TM	CED	YG	CW	REA	MB	FT
10	-2.1	51	68	31	57	8	-0.22	7	0.25	-0.15	-0.06

SLC TYE 476T ET
 VV X-MAN 182X

SLC MASTER PLAN 134N
 SFL SLC MS CENTENNIAL 188C

VV TOP HEAVY 8T
 CVF CRESTVIEW MANDY 39W
 DTJ MANDY 17M

JRI HEAVY EQUIPMENT 125M3
 TSCC TWIN STAR KAYCEE 706K
 SLC FREEDOM 178F ET
 ATC GOLD STAR KANDY 72K

AI MAY 2, 2013 TO SLC FREEDOM 178F

P/E MAY 6 TO JULY 23, 2013 TO SLC TOUCHDOWN 66W

Talk about thickness and depth of body. This sweet made bred heifer has it all. Her dam sells as lot 92. You will never go wrong adding this female into your cow herd. The dam's sire, V V 8T, was a high selling bull to Crest View and has definitely done a great job in their program.

BW 68
WW 562
YW 1015

FEMALE • PUREBRED 94 • RED • POLLED

VV Zinfandel 111Z

CDGV147166 • VV111Z • 02/25/2012

CE	BW	WW	YW	MK	TM	CED	YG	CW	REA	MB	FT
9	-4.1	32	38	36	52	4	-0.46	-14	0.43	-0.27	-0.09

JHL LCHMN CHRONICLE 8011H
 FRL FIR RIVER RANALDO 38U
 FRL FIR RIVER CHERRY 73R

TLR COCOA 35C
 LCHMN OMC GV F8038
 JCGR BAR GT LOUIE 2J
 CCF GREAT LAKES KATIE 42K
 SINK POLLED GUZZLER D82
 SLC FELISHA 51B
 HCG TRIANGLE T MR 77E
 HCG TRIANGLE T ECTESSA 32Z

MGF GUZZY'S BIG GULP 1H ET
 BKS PLD CADILLAC LANDA 30N
 HCG TRIANGLE T GAIL 20G

AI MAY 2, 2013 TO SLC FREEDOM 178F

P/E MAY 6 TO JULY 23, 2013 TO SLC TOUCHDOWN 66W

Here is a moderate made, sweet package that will impress everyone. The great breeding value of her sire will be noted throughout the catalogue. Her dam is an excellent producing mature cow that has stood the test of time at V & V; she sells as lot 185.

BW 62
WW 490
YW 770



LOT 17 VV Z CLASS ACT 113Z

FEMALE • PUREBRED 94 • RED • POLLED

VV Z Class Act 113Z

CDGV147013 • VV113Z • 02/25/2012



CE	BW	WW	YW	MK	TM	CED	YG	CW	REA	MB	FT
10	-0.2	57	78	35	64	7	-0.30	16	0.39	-0.31	-0.08

JCGR BAR GT LOUIE 2J
 VV XTREME RELAY 62X ET
 AR LADY GRIMSHAW 1G

CES DECKA OUTBACK 75S
 VV CLASSY SASSY 85U
 SLC DEBBIE 209S

GKT BUD 11G
 049C
 FLGY 1110A
 AR LADY ERIN 21E
 CES DECKA PRECISION 144P
 CES DECKA HARPER 150L
 SLC MERV 12N
 SLC DEBBIE 109P

AI MAY 2, 2013 TO SLC MASTER PLAN 191U
 P/E MAY 6 TO JULY 23, 2013 TO SLC TOUCHDOWN 66W
 This long bodied, dark red heifer has the genetic makeup and the proven ability to raise the kind of calves that everyone loves. Her grandam, SLC Debbie 209S, was always one of the favourites at V & V.

BW	72
WW	582
YW	1027



LOT 19 VV ZULILY 125Z

FEMALE • PUREBRED 88 • RED • POLLED

VV Zip 'N' Zlide 166Z

CDGV147241 • VV166Z • 03/30/2012



CE	BW	WW	YW	MK	TM	CED	YG	CW	REA	MB	FT
6	2.2	69	99	31	65	6	-0.21	31	0.27	-0.20	-0.09

JHL LCHMN CHRONICLE 8011H
 FRL FIR RIVER RANALDO 38U
 FRL FIR RIVER CHERRY 73R

TLR COCOA 35C
 LCHMN OMC GV F8038
 JCGR BAR GT LOUIE 2J
 CCF GREAT LAKES KATIE 42K

SLC CARREL'S STUBBY 267L
 VV PATTE 62P
 VV MARION 20M

SLC ANITA ET 263F
 MWH POLLED KONRAD 9K
 MWH BERGANDY EVE 1G

AI MAY 2, 2013 TO ATC GOLD STAR POLLED 5D
 P/E MAY 6 TO JULY 23, 2013 TO VS ZZ TOP 6Z
 V V 166Z is a smooth made, long bodied daughter of FRL 38U, a sire that has had a tremendous influence on the V & V breeding program. Her dam was one of the great producing females in the herd.

BW	88
WW	577
YW	1114

FEMALE • PUREBRED 94 • RED • POLLED

VV Zulily 125Z

CDGV147023 • VV125Z • 02/29/2012



CE	BW	WW	YW	MK	TM	CED	YG	CW	REA	MB	FT
5	2.5	67	91	29	62	5	-0.24	27	0.34	-0.29	-0.08

SPG SUNNY PLAIN TOPPER 702T
 VV WHO'S NEXT LADIES 182W
 AR JENNY 47P

SPG PLD SUNNY PLAIN HERO
 SPG SUNNY PLAIN JOYCE 127R
 AR COLE 26M
 AR 63K
 SLC FREEDOM 178F ET
 TSCC TWIN STAR 670H
 BKS POLLED CADILLAC WILSON
 CVG CYPRESS VIEW MEEKO 14E

TSCC TWIN STAR ROSARRIO 670R
 NLG PLD NORTHERN TOFFEE 35T
 NLG PLD MERCEDES 10M

AI MAY 2, 2013 TO ATC GOLD STAR POLLED 5D
 P/E MAY 6 TO JULY 23, 2013 TO VS ZZ TOP 6Z
 V V 125Z is a very attractive, dark red female that is true to her genetic makeup, full of performance and top maternal values. Her dam is lot 137 and she continues to be a valued cow at V & V.

BW	86
WW	545
YW	1051



LOT 20 VV ZU HAVE TRIX GALORE 161Z

FEMALE • PUREBRED 94 • RED • POLLED

VV Zu Have Trix Galore 161Z

20

CDGV147045 • VV161Z • 03/27/2012

CE	BW	WW	YW	MK	TM	CED	YG	CW	REA	MB	FT
9	1.2	68	104	30	63	11	-0.18	34	0.30	-0.28	-0.08

VV UR JEST'N'TIME 72U	VV RENAISSANCE JESTER 79R
VV XCALIBRE 101X	TSCC TWIN STAR POLLY 906P
VV JEANETTE 103P	VV BOODOM 5M
	VCR MS VALE JEANETTE 23J
VV BOODOM 5M	SLC FREEDOM 178F ET
VV TRIX 131R	JBM ALVA 23K
WGG MADEMOISELLE TRIX 68M	DTJ FIRE POWER JAKE 16J ET
	WGG KICKAPOO LADY 13K

AI MAY 2, 2013 TO ATC GOLD STAR POLLED 5D

P/E MAY 6 TO JULY 23, 2013 TO VS ZZ TOP 6Z

This daughter of lot 172 is just a small sample of what this cow family is capable of producing. Check out all her top quality daughters in the sale. This dark red heifer will not disappoint you; the longevity is part of this maternal package.

BW 80
WW 545
YW 1095



LOT 22 VV ZARA 222Z

FEMALE • PUREBRED 88 • RED • POLLED

VV Zata Jasmine's Fine 202Z

21

CDGV147378 • VV202Z • 03/09/2012

CE	BW	WW	YW	MK	TM	CED	YG	CW	REA	MB	FT
7	1.0	52	66	29	55	9	-0.10	10	0.05	-0.12	-0.04

JDPD ROLEX 151M	HAD SLEEP TIGHT ET
JDPD ASTRO 407S	VTG VISTA MS FREEDOM 0151K
HAD PRINCESS OF ALOT 407P	HAD LANCELOT 795L
	HAD 140L
VG VALLEY BLACKJACK JR 37H	SLC BLACK JACK 48F ET
SLC JASMINE 61P	VG VALLEY SC SWEETIE 80D
SLC JASMINE 240J	XZR C342 (STUBBY)

AI MAY 2, 2013 TO SLC FREEDOM 178F

P/E MAY 6 TO JULY 23, 2013 TO SLC TOUCHDOWN 66W

Here is a direct daughter of JDPD Astro, a sire who is making a stir throughout North America. His calves are winning in the show ring, top-ping sales and becoming good young females. This feminine, angular, female's dam sells as lot 177.

BW 94
WW 470
YW 873

FEMALE • PERCENTAGE 75 • RED • POLLED

VV Zara 222Z

22

CDGV147379 • VV222Z • 03/18/2012

CE	BW	WW	YW	MK	TM	CED	YG	CW	REA	MB	FT
7	0.6	46	64	26	49	5	-0.23	9	0.16	-0.16	-0.08

CES DECKA OUTBACK 75S	CES DECKA PRECISION 144P
SLC TOUCHDOWN 66W	CES DECKA HARPER 150L
HL PLD MISS STALLONE 2R	ARN SIR ARNOLD K114
	DVE DAVIDSON MS STALLONE 88H
LPRA RED LENROC RISING STAR 18L	JPP RED HILL SPRINGS ROBIN HOOD 6F
FUN PARTY SARA 624S	PRW RED WILD ROSE STAR 81H
FUN PARTY SIS 810N	JHL LCHMN PARTY BOY 8001D ET
	KHR 810X

AI MAY 2, 2013 TO V V ULTRAMATIC 144U

P/E MAY 6 TO JULY 23, 2013 TO SLC TOUCHDOWN 66W

V V 222Z is a sweet made, eye appealing daughter of SLC 66W that has the balance and style to become a superb brood cow. Her sire was a high selling bull at SLC when he was added into the V & V herd bull battery.

BW 84
WW 533
YW 941

FEMALE • PUREBRED 88 • RED • POLLED

VV Zig Zag Zip 248Z

23

CDGV147381 • VV248Z • 03/23/2012

CE	BW	WW	YW	MK	TM	CED	YG	CW	REA	MB	FT
7	2.6	67	89	33	67	8	-0.14	26	0.16	-0.23	-0.07

VV BOODOM 5M	SLC FREEDOM 178F ET
VV RENAISSANCE JESTER 79R	JBM ALVA 23K
LTC RIDGE STAR PLD JEST 280J	ATC GOLD STAR POLLED 5D
	LTC RIDGE STAR 67F
VV RENAISSANCE JESTER 79R	VV BOODOM 5M
VV TRILBY 25T	LTC RIDGE STAR PLD JEST 280J
VV RHODA 205R	DVE DAVIDSON PLD ROMEO 45K

AI MAY 2, 2013 TO V V UBET ON ME 160U

P/E MAY 6 TO JULY 23, 2013 TO SLC TOUCHDOWN 66W

Here is a moderate made, double bred daughter of Renaissance Jester a sire whose sons have been in high demand at the V & V Annual Bull Sale. Her dam sells as lot 136.

BW 82
WW 555
YW 1035



LOT 25 VV ZINNIA 267Z

FEMALE • PUREBRED 94 • RED • POLLED

VV Zee Zee Top

CDGV147385 • VV266Z • 04/15/2012



CE	BW	WW	YW	MK	TM	CED	YG	CW	REA	MB	FT
6	1.0	62	83	28	59	8	-0.31	20	0.46	-0.22	-0.08

JCGR BAR GT LOUIE 2J
 VV WATER LOU 61W ET
 HDS NIKKI 39N

ARN SIR ARNOLD K114
 HL MISS CINNAMON 1P
 HL FINAL DANCE 30M

GKT BUD 11G
 049C
 DL JEN-TY BLK THUNDER 154L
 HDS 16L
 JRI PLD GRAND PRIX ET
 ARN MISS ARNOLD F1 14
 VCR MR PLD VALE COUNTRY 22J
 ATC GOLD STAR GAEL 333G

AI MAY 2, 2013 TO ATC GOLD STAR POLLED 5D
 P/E MAY 6 TO JULY 23, 2013 TO VS ZZ TOP 6Z

Calving ease, performance and milk make up this gals top pedigree.
 Her sire, V V 61W, continues to do a great job at V & V and her dam is a high selling Sir Arnold daughter purchased from the Hurlburts. A maternal brother is VV Udell 185U, the high selling bull to Fladeland Livestock.

BW	88
WW	605
YW	949

FEMALE • PUREBRED 88 • RED • POLLED

VV Zinnia 267Z

CDGV147387 • VV267Z • 04/22/2012



CE	BW	WW	YW	MK	TM	CED	YG	CW	REA	MB	FT
4	2.8	67	84	22	55	1	-0.19	23	0.19	-0.26	-0.08

LCR STAR PROSPECT 155S
 LCR XZAIVER 20X
 LCD PRESLEY 20P

LCR STAR PROSPECT 155S
 LCR WYNONA 937W
 LCR PAGE 37P

WTM TWIN STAR PROSPER 51P
 LCD NICOLE 155N
 JRI PLD FREE AGENT 125J3
 LCD METILDA 22M
 WTM TWIN STAR PROSPER 51P
 LCD NICOLE 155N
 LCD KURT 121K

AI MAY 2, 2013 TO V V UBET ON ME 160U
 P/E MAY 6 TO JULY 23, 2013 TO SLC TOUCHDOWN 66W

V V 267Z is a big dark red powerhouse female that will compete at the top end in anyone's herd. She has all the style, balance and pedigree that is required. Her dam sells as lot 115.

BW	90
WW	688
YW	1137

FEMALE • PERCENTAGE 75 • RED • POLLED

VV Yorrie 2Y

CDGV143482 • VV2Y • 01/28/2011



CE	BW	WW	YW	MK	TM	CED	YG	CW	REA	MB	FT
10	-2.0	49	68	30	54	7	-0.23	7	0.22	-0.09	-0.06

SPG SUNNY PLAIN TOPPER 702T
 VV WHO'S YOUR DADDY 39W
 VV JESTI LOU 37P

BARM RED BAR M R PAY DAY 11R
 CVF CREST VIEW TORRI 35T
 DTJ MANDY 17M

SPG PLD SUNNY PLAIN HERO
 SPG SUNNY PLAIN JOYCE 127R
 JCGR BAR GT LOUIE 2J
 LTC RIDGE STAR PLD JEST 280J
 BARM RED BAR M PAY DAY 103L
 BARM RED BAR M LADY 46J
 SLC FREEDOM 178F ET
 ATC GOLD STAR KANDY 72K

P/E MAY 4 TO JULY 25, 2013 TO VV11Y, VV 35Y, BLB 12Z,
 SLC 82W, STON 9Y AND VV 109Z

BW	76
WW	525
YW	729

FEMALE • PUREBRED 94 • RED • POLLED

VV Yvonne 4Y

CDGV143510 • VV4Y • 01/29/2011



CE	BW	WW	YW	MK	TM	CED	YG	CW	REA	MB	FT
10	0.4	55	80	28	55	2	-0.21	18	0.17	-0.27	-0.08

JRI TOP SECRET 253M75 ET
 JRI TOP RECRUIT 254U82
 JRI MS COCOA 254S72

SLC MATRIX 25R
 CES DECKA FIRST CLASS 62U
 CES DECKA FIRST CLASS 81M

JRI PLD FREE AGENT 125J3
 JRI MS PLD FRONTIER 253J60
 JRI EXTRA EXPOSURE 285L71 ET
 JRI MS AT LAST 254P62
 SLC FREEDOM 178F ET
 SLC PARKLAND 200D
 SLC GALAXY 72G
 CES DECKA FIRST CLASS 101K

P/E MAY 4 TO JULY 25, 2013 TO V V YOU JEST 11Y ET,
 V V YOUR JOKING RIGHT 35Y ET, BLB PLD REVOLVER 12Z

BW	82
WW	479
YW	844

FEMALE • PUREBRED 94 • RED • POLLED

VV You're Twice The Fun 9Y 29

CDGV143643 • VV9Y • 01/29/2011

CE	BW	WW	YW	MK	TM	CED	YG	CW	REA	MB	FT
10	-0.4	61	92	29	59	10	-0.20	24	0.31	-0.23	-0.07

SPG SUNNY PLAIN TOPPER 702T
 VV WHO'S YOUR DADDY 39W
 VV JESTI LOU 37P

SPG PLD SUNNY PLAIN HERO
 SPG SUNNY PLAIN JOYCE 127R
 JCGR BAR GT LOUIE 2J
 LTC RIDGE STAR PLD JEST 280J
 EGL EXECUTIVE J159
 EGL J036 ET
 NGAC REMITALL FIRE POWER 101F
 BB MISS 61Y

EGL EL DORADO L058
 DTJ ANITA KAYLA R103
 DTJ PLD ANITA KAYLA 18K ET

P/E MAY 4 TO JULY 25, 2013 TO SLC TOUCHDOWN 82W,
 STON STATESMAN 9Y, V V Z-LONG NECK BOTTLE 109Z
 9Y is a maternal sister to V V Ultramate 144U. Flatland Ranch - Hanna,
 AB selected a maternal brother at the 2013 sale for \$5,500.

BW	72
WW	439
YW	825

FEMALE • PUREBRED 94 • RED • POLLED

STON Miss Melanie 18Y 31

CDGV142833 • STON18Y • 02/15/2011

CE	BW	WW	YW	MK	TM	CED	YG	CW	REA	MB	FT
8	2.4	62	94	30	61	5	-0.20	30	0.26	-0.38	-0.08

EV HUMDINGER 119M
 STON WINSTON 6W
 STON MS CERTAIN GLOW 2T ET

WGG HUMBUG 72H
 WGG JANET 75J
 NGAC REMITALL PLD EXCEL 232E
 JRI MS CERTAIN GLOW 253M63
 VAA LEACHMAN NEW DAY 205B
 BB MISS 61Y
 ATC GOLD STAR AUSTRIA 10A
 ATC GOLD STAR 21B

SLC FREEDOM 178F ET
 STON MISS MELANIE ET 9U
 ATC GOLD STAR 96E

P/E MAY 4 TO JULY 25, 2013 TO VV11Y, VV 35Y, BLB 12Z,
 SLC 82W, STON 9Y AND VV 109Z

BW	84
WW	710
YW	926



LOT 32 VV YEKETERINA 19Y

FEMALE • PUREBRED 94 • RED • POLLED

VV Yeketerina 19Y 32

CDGV143610 • VV19Y • 01/30/2011

CE	BW	WW	YW	MK	TM	CED	YG	CW	REA	MB	FT
8	0.3	61	86	24	55	7	-0.24	21	0.33	-0.30	-0.08

SPG SUNNY PLAIN TOPPER 702T
 VV WHO'S YOUR DADDY 39W
 VV JESTI LOU 37P

SPG PLD SUNNY PLAIN HERO
 SPG SUNNY PLAIN JOYCE 127R
 JCGR BAR GT LOUIE 2J
 LTC RIDGE STAR PLD JEST 280J
 VAA LEACHMAN NEW DAY 205B
 BB MISS 61Y
 DTJ SON OF TRIPLE M 30G ET
 DTJ ROSE F94

SLC FREEDOM 178F ET
 DTJ ROSE 28P
 DTJ LA'ROSE 502L

P/E MAY 4 TO JULY 25, 2013 TO V V YOU JEST 11Y ET,
 V V YOUR JOKING RIGHT 35Y ET, BLB PLD REVOLVER 12Z

BW	88
WW	570
YW	840



LOT 33 VV YAHOO 23Y

FEMALE • PUREBRED 94 • RED • POLLED

VV Yahoo 23Y 33

CDGV143527 • VV23Y • 01/30/2011

CE	BW	WW	YW	MK	TM	CED	YG	CW	REA	MB	FT
8	1.3	61	72	21	51	5	-0.36	13	0.59	-0.31	-0.08

GKT BUD 11G
 JCGR BAR GT LOUIE 2J
 049C

GKT BOO BOO 155E
 GKT KATIE
 PGRS SHINING SPIRIT
 041Z

SPG SUNNY PLAIN TOPPER 702T
 VV WATERBUM 163W
 VV SUPERBUM 19S

SPG PLD SUNNY PLAIN HERO
 SPG SUNNY PLAIN JOYCE 127R
 JCGR BAR GT LOUIE 2J
 PAN PANDA KISMET 172K

P/E MAY 4 TO JULY 25, 2013 TO SLC TOUCHDOWN 82W,
 STON STATESMAN 9Y, V V Z-LONG NECK BOTTLE 109Z

V V 23Y is a superb two-year-old that is very angular made, sweet
 fronted and ready to blossom into a top cow. Her dam sells as lot 108.

BW	86
WW	512
YW	712

FEMALE • PUREBRED 94 • RED • POLLED

VV Yeepiffany 29Y

CDGV143425 • VV29Y • 01/31/2011

CE	BW	WW	YW	MK	TM	CED	YG	CW	REA	MB	FT
12	-1.3	46	51	29	52	8	-0.33	-2	0.46	-0.22	-0.06

JCGR BAR GT SHREK 604L ET
OHF RED ROCK 3R
VDG VAN DEAU NORTHWIND 107J

SBR 2085L MARCUS P13
VV TIFFANY 81T
VV JESTI LOU 37P

SLC FREEDOM 178F ET
049C
VDWW POLLED INNOVATOR 477G
DVE DAVIDSON MS PLD RAE 9E
BTI 2085L
DTJ MORGAN STAR 42M
JCGR BAR GT LOUIE 2J
LTC RIDGE STAR PLD JEST 280J

P/E MAY 4 TO JULY 25, 2013 TO SLC TOUCHDOWN 82W,
STON STATESMAN 9Y, V V Z-LONG NECK BOTTLE 109Z

BW 74
WW 448
YW 678

FEMALE • PUREBRED 94 • RED • POLLED

VV Yo'Debbie 72Y

CDGV143654 • VV72Y • 02/03/2011

CE	BW	WW	YW	MK	TM	CED	YG	CW	REA	MB	FT
8	2.6	71	92	30	65	6	-0.18	28	0.29	-0.33	-0.07

DEG PESO 286P
VV UBET ON ME 160U
VV REDCLIFF'S LOUISE 6P

SLC MERV 12N
SLC DEBBIE 209S
SLC DEBBIE 109P

DEG MONAHAN 293M
DEG JYSSICA 286J
JCGR BAR GT LOUIE 2J
JC PEMBINA KAY 583K
SLC FREEDOM 178F ET
SLC HICKORY GOAL 272K
VG VALLEY BLACKJACK JR 37H
ATC GOLD STAR PLD BLACK 148J

P/E MAY 4 TO JULY 25, 2013 TO V V YOU JEST 11Y ET,
V V YOUR JOKING RIGHT 35Y ET, BLB PLD REVOLVER 12Z

72Y's sire was a high selling bull to Nelson Gelbvieh and she comes
from a good maternal line as lot 17.

BW 88
WW 608
YW 910

BULL • PUREBRED • RED • POLLED

VV Amos Moses 5A

149139 • V V 5A • 02/02/2013 • BW: 88

SIRE: JRI TOP RECRUIT

36A

FEMALE • PUREBRED 94 • RED • POLLED

VV Yur A Sweet Ride 86Y

CDGV143593 VV86Y • 02/04/2011

CE	BW	WW	YW	MK	TM	CED	YG	CW	REA	MB	FT
4	1.1	52	61	28	54	1	-0.44	7	0.58	-0.34	-0.10

JCGR BAR GT LOUIE 2J
VV RALLY LOU 16R
LTC RIDGE STAR PLD KELLY 59K

MGF GUZZY'S BIG GULP 1H ET
BKS PLD CADILLAC LANDA 30N
HCG TRIANGLE T GAIL 20G

GKT BUD 11G
049C
ATC GOLD STAR POLLED 5D
LTC RIDGE STAR 236D
SINK POLLED GUZZLER D82
SLC FELISHA 51B
HCG TRIANGLE T MR 77E
HCG TRIANGLE T ECTESSA 32Z

P/E MAY 4 TO JULY 25, 2013 TO SLC TOUCHDOWN 82W,
STON STATESMAN 9Y, V V Z-LONG NECK BOTTLE 109Z

V V 86Y's sire was the high selling \$16,000 bull to DTJ Gelbvieh -
Portage La Prairie, MB. Her dam sells as lot 185.

BW 90
WW 547
YW 777

FEMALE • BALANCER • RED • POLLED

VV A Sweet Sweet Ride 102A

149146 • V V102A • 02/27/2013 • BW: 66

SIRE: BBC RED BLAIR'S SQUALL 981W

38A

FEMALE • PUREBRED 88 • RED • POLLED

BLC Yeterday 50Y

CDGV142599 • BLC50Y • 02/26/2011

CE	BW	WW	YW	MK	TM	CED	YG	CW	REA	MB	FT
7	2.4	64	88	27	59	4	-0.16	25	0.24	-0.22	-0.06

DEG PESO 286P
VV PESO 63T
ATC GOLD STAR PLD JUSTINE 6J

BTI GENERAL 2207G
BLG KAMILLAH 50K
BLG FRISKY 1F

DEG MONAHAN 293M
DEG JYSSICA 286J
ATC GOLD STAR POLLED 5D
ATC GOLD STAR GENES 37G
BTI DUKE 2148D
COL 219Y
KGS KERIGLEN SUMA WALKER

P/E MAY 4 TO JULY 25, 2013 TO SLC TOUCHDOWN 82W,
STON STATESMAN 9Y, V V Z-LONG NECK BOTTLE 109Z

BLC 50Y was purchased from the Beamish's as a calf at the Wish List
Sale. Her sire, purchased from V & V Farms, is siring thick, deep bodied
performance calves.

BW 696
WW 892
YW

FEMALE • PUREBRED • RED • POLLED

VV Another Day 162A

149194 • V V 162A • 03/17/2013 • BW: 82

SIRE: V V YOUR JOKING RIGHT 35Y

35A

FEMALE • PERCENTAGE 50 • RED • POLLED

VV Julie 83Y

CDGV143227 • VV83Y • 02/04/2011

CE	BW	WW	YW	MK	TM	CED	YG	CW	REA	MB	FT
5	4.9	60	94	21	51	4	-0.09	33	0.22	-0.09	-0.05

ROBN RED RMJ REDMAN 1T
CBM RED LAZY MC WRANGLER 3W
CBM RED LAZY MC DUCHESS 39T

SBR 2085L MARCUS P13
VV UPBEAT JULIE 170U
DTJ JULIE 7P

IMP RED 5L NORSEMAN KING 2291
CFCC CROWFOOT KURUBA 4033P
CBM LAZY MC BOOM 44R
CBM RED LAZY MC DUCHESS 79R
BTI 2085L
DTJ MORGAN STAR 42M
SLC FREEDOM 178F ET
DTJ JULIE G156

P/E MAY 4 TO JULY 25, 2013 TO SLC TOUCHDOWN 82W,
STON STATESMAN 9Y, V V Z-LONG NECK BOTTLE 109Z

BW 112
WW 640
YW

FEMALE • PERCENTAGE 75 • RED • POLLED

VV Alisa 146A

149148 • V V146A • 03/18/2013 • BW: 70

SIRE: SLC TOUCHDOWN 66W

37A



FEMALE • BALANCER 50 • RED • POLLED

VV Miss Balancer 93Y

CDGV143647 • VV93Y • 02/05/2011

CE	BW	WW	YW	MK	TM	CED	YG	CW	REA	MB	FT
8	1.2	43	61	24	45	5	-0.21	8	0.22	0.00	-0.06

ROBN RED RMJ REDMAN 1T
 CBM RED LAZY MC WRANGLER 3W
 CBM RED LAZY MC DUCHESS 39T

ZTM MCCOY 4L NAVAJO 2N
 VV NAVAJO SUNRISE 151S
 DAT CIRCLE T HOLDA 868H

P/E MAY 4 TO JULY 25, 2013 TO V V YOU JEST 11Y ET,
 V V YOUR JOKING RIGHT 35Y ET, BLB PLD REVOLVER 12Z

39

BW 88
 WW 436
 YW



LOT 39 VV MISS BALANCER 93Y

FEMALE • PUREBRED 94 • RED • POLLED

VV Yaffa 109Y

CDGV143611 • VV109Y • 02/07/2011

CE	BW	WW	YW	MK	TM	CED	YG	CW	REA	MB	FT
7	2.4	72	95	29	65	11	-0.12	29	0.21	-0.23	-0.06

VV BOODOM 5M
 VV RENASANCE JESTER 79R
 LTC RIDGE STAR PLD JEST 280J

EGL EL DORADO L058
 DTJ MISS ANITA 57P
 SLC 163E ET

P/E MAY 4 TO JULY 25, 2013 TO SLC TOUCHDOWN 82W,
 STON STATESMAN 9Y, V V Z-LONG NECK BOTTLE 109Z

Dam sells as lot 176

40

BW 86
 WW 586
 YW 823

FEMALE • PUREBRED 94 • RED • POLLED

VV Yelisabeta 111Y

CDGV143660 • VV111Y • 02/08/2011

CE	BW	WW	YW	MK	TM	CED	YG	CW	REA	MB	FT
6	0.4	77	95	20	59	6	-0.23	25	0.41	-0.20	-0.07

TLR COCOA 35C
 JHL LCHMN CHRONICLE 8011H
 LCHMN OMC GV F8038

BTI RED ALERT 2077K
 STON MISS PARADEE 64R
 JBM PARADEE 14N

P/E MAY 4 TO JULY 25, 2013 TO SLC TOUCHDOWN 82W,
 STON STATESMAN 9Y, V V Z-LONG NECK BOTTLE 109Z

V V 111Y is a Chronicle daughter out of the Sweetheart Champion
 Female, STON 64R. She sells as lot 168.

BEA POLLED MIDNIGHT 782W
 TLR MISS KAISER 449Y
 JHL LCHMN Z138 8005D
 LEACHMAN OMC GV B8020
 SLC FREEDOM 178F ET
 BTI LADY GRANITE 2001E ET
 GKT BOO BOO 155E
 JBM PARADEE 146L

41

BW 86
 WW 668
 YW 838

FEMALE • PUREBRED • RED • POLLED

VV Ambreen 85A

149066 • VV85A • 02/22/2013 • BW: 70
 SIRE: SLC TOUCHDOWN 66W

40A

FEMALE • PERCENTAGE 75 • RED • POLLED

LCR Yesil 119Y

CDGV143066 • LCR119Y • 03/25/2011

CE	BW	WW	YW	MK	TM	CED	YG	CW	REA	MB	FT
4	3.3	60	74	22	52	-1	-0.21	18	0.20	-0.21	-0.08

WTM TWIN STAR PROSPER 51P
 LCR STAR PROSPECT 155S
 LCD NICOLE 155N

LCD LIONHEART 177L
 LCR NADELE 19N

P/E MAY 4 TO JULY 25, 2013 TO SLC TOUCHDOWN 82W,
 STON STATESMAN 9Y, V V Z-LONG NECK BOTTLE 109Z

42

BW 98
 WW 496
 YW 878

FEMALE • PUREBRED 94 • RED • POLLED

VV You Hold My Heart 132Y

CDGV143514 • VV132Y • 02/14/2011

CE	BW	WW	YW	MK	TM	CED	YG	CW	REA	MB	FT
11	-2.0	59	72	31	61	10	-0.28	9	0.30	-0.21	-0.08

DL JEN-TY RAMBO 205P
 VCR SIX PACK 25S
 VV LOIS 21L

SLC FREEDOM 87N ET
 SPG SUNNY PLAIN BEAUTY 869U
 SPG SUNNY PLAIN BEAUTY 23P

P/E MAY 4 TO JULY 25, 2013 TO SLC TOUCHDOWN 82W,
 STON STATESMAN 9Y, V V Z-LONG NECK BOTTLE 109Z

MMM CALBERTA RESOURCE 8307H
 DL JEN-TY GOLD CHARMER 40H
 ATC GOLD STAR HUSTON 214H
 DAT CIRCLE T HELOISE 828H
 SLC FREEDOM 178F ET
 SLC ANITA 19F ET
 SPG JUDGE 101J
 SPG SUNNY PLAIN KIM 34K

43

BW 70
 WW 576
 YW 819

FEMALE • PUREBRED • RED • POLLED

VV Angelica 47A

149034 • VV47A • 02/16/2013 • BW: 84
 SIRE: JDPD MOVADO 407T

42A

FEMALE • PUREBRED • RED • POLLED

VV Aisleen 139A

149079 • VV139A • 03/15/2013 • BW: 64
 SIRE: SLC TOUCHDOWN 66W

43A



FEMALE • PUREBRED 94 • RED • POLLED

Pan Panda Yvonne 1134Y

CDGV144783 • PAN134Y • 04/17/2011



CE	BW	WW	YW	MK	TM	CED	YG	CW	REA	MB	FT
1	6.7	73	99	25	62	7	-0.10	38	0.32	-0.12	-0.05

ULL LIMITED EDITION 16P
 VV SECOND EDITION 116S
 SLC ANITA 68L ET

TSCC TWIN STAR ROSAN 770R
 PAN PANDA TEQUILA 779T
 PAN PANDA KAPRI 181K

P/E MAY 4 TO JULY 25, 2013 TO V V YOU JEST 11Y ET,
 V V YOUR JOKING RIGHT 35Y ET, BLB PLD REVOLVER 12Z

BW 116
 WW 625
 YW 833

FEMALE • PUREBRED 94 • RED • POLLED

VV Ypu Bet 141Y

CDGV143427 • VV141Y • 02/18/2011



CE	BW	WW	YW	MK	TM	CED	YG	CW	REA	MB	FT
9	1.6	62	96	33	64	10	-0.20	30	0.29	-0.30	-0.08

VV TIZIANO 151T
 VV WHISTLE 87W
 VV RAMBLIN' ROSE 56R

SBR 2085L MARCUS P13
 VV TRUDY 95T
 SLC SADIE 47P

P/E MAY 4 TO JULY 25, 2013 TO V V YOU JEST 11Y ET,
 V V YOUR JOKING RIGHT 35Y ET, BLB PLD REVOLVER 12Z

BW 90
 WW 486
 YW 806

V V 141Y is a daughter of V V Trudy 95T; a Heifer Calf Champion at Agribition. She went on to be a donor cow at V & V Farms. A number of maternal siblings sell.

FEMALE • PUREBRED 94 • RED • POLLED

VV You're Right Again 164Y

CDGV143587 • VV164Y • 03/10/2011



CE	BW	WW	YW	MK	TM	CED	YG	CW	REA	MB	FT
5	2.6	61	99	26	56	9	-0.20	33	0.35	0.02	-0.08

CZM FAIRYVALE XCELERATOR 1X
 ATC GOLD STAR POLLED 5D
 ATC GOLD STAR ET 92A

GKT BOO BOO 155E
 VV NOELLE 1N
 SLC MISS SWEETIE 149G

VSD GOLD DUST HI HOPE
 CZM FAIRYVALE HOLLY
 ATC GOLD STAR 4W
 RLR EMMA 100G
 FHG FLYING H CADILLAC 184C
 CCD X55
 XZR XZ COPPER 301C
 SLC SWEETIE 274D

P/E MAY 4 TO JULY 25, 2013 TO SLC TOUCHDOWN 82W,
 STON STATESMAN 9Y, V V Z-LONG NECK BOTTLE 109Z

BW 100
 WW 379
 YW 1045

VV 164Y's dam was a prolific female at V & V Farms. After her show career she became a foundation brood cow. A number of her daughters and grand daughters sell.

FEMALE • PUREBRED • RED • POLLED

VV Anjelica 12A

149097 • VV12A • 02/25/2013 • BW: 80
 SIRE: V V ULTRAMATIC 144U



FEMALE • PERCENTAGE 75 • RED • POLLED

LCR Yngvild 137Y

CDGV143068 • LCR137Y • 03/26/2011



CE	BW	WW	YW	MK	TM	CED	YG	CW	REA	MB	FT
5	1.8	63	85	24	56	0	-0.21	22	0.24	-0.21	-0.08

WTM TWIN STAR PROSPER 51P
 LCR STAR PROSPECT 155S
 LCD NICOLE 155N

LCD KURT 121K
 LCR PAGE 37P

SLC FREEDOM 178F ET
 TPG POLLED FLAXEN 51F
 VCR VALE COUNTRY PLD LAD 9L
 LCD HOLIDAY 154H
 TSCC TWIN STAR HERITAGE 227H
 LCD DONNA 121B

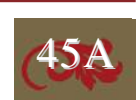
P/E MAY 4 TO JULY 25, 2013 TO SLC TOUCHDOWN 82W,
 STON STATESMAN 9Y, V V Z-LONG NECK BOTTLE 109Z

BW 90
 WW 500
 YW 1010

FEMALE • PUREBRED • RED • POLLED

VV Adelpia 115A

149035 • VV115A • 03/01/2013 • BW: 82
 SIRE: FRL FIR RIVER SONAR 36S ET



FEMALE • PUREBRED 94 • RED • POLLED

Pan Panda Y Not Promise 155Y

CDGV144791 • PAN155Y • 05/06/2011



CE	BW	WW	YW	MK	TM	CED	YG	CW	REA	MB	FT
2	4.5	66	86	36	69	9	-0.16	27	0.31	-0.11	-0.05

ULL LIMITED EDITION 16P
 VV SECOND EDITION 116S
 SLC ANITA 68L ET

PAN PANDA HARD COPY 95H
 PAN PANDA PROMISES 466P
 PAN PANDA MIRANDA 341M

JRI PD RESOURCE 197E51
 DEG BURNING EMBER 272J ET
 EGF MR 709R (DOC)
 BB MISS 61Y
 KCF BENNETT C333
 PAN PANDA EASTER 37E
 PAN PANDA KAREFREE 168K
 PAN PANDA HIGH DESIGN 98H

P/E MAY 4 TO JULY 25, 2013 TO SLC TOUCHDOWN 82W,
 STON STATESMAN 9Y, V V Z-LONG NECK BOTTLE 109Z

BW 100
 WW 690
 YW



REF VV NOELLE 1N - DAM OF LOT 48, 79 & 89

FEMALE • PUREBRED 94 • RED • POLLED

VV You're All That 166Y

CDGV143652 • VV166Y • 03/12/2011

CE	BW	WW	YW	MK	TM	CED	YG	CW	REA	MB	FT
7	2.1	65	97	31	63	10	-0.21	30	0.30	-0.29	-0.08

VV TIZIANO 151T
 VV WHISTLE 87W
 VV RAMBLIN' ROSE 56R

CK TRIPLE X 45M
 NGC SHE'S ALL THAT 38S
 TPG POLLED JAYNA 49J

P/E MAY 4 TO JULY 25, 2013 TO V V YOU JEST 11Y ET,
 V V YOUR JOKING RIGHT 35Y ET, BLB PLD REVOLVER 12Z

BW 88
 WW 574
 YW 916



FEMALE • PUREBRED 94 • RED • POLLED

VV Yasmin 201Y

CDGV143432 • VV201Y • 01/27/2011

CE	BW	WW	YW	MK	TM	CED	YG	CW	REA	MB	FT
9	1.7	65	71	27	60	7	-0.28	13	0.33	-0.33	-0.08

JCGR BAR GT LOUIE 2J
 VV TRUCK RALLY 145T ET
 GCC RED SUGAR 59K

ULL EXTRA RESPECT 24R
 CES DECKA PEPPER 85T
 CES DECKA PEPPER 42R ET

P/E MAY 4 TO JULY 25, 2013 TO V V YOU JEST 11Y ET,
 V V YOUR JOKING RIGHT 35Y ET, BLB PLD REVOLVER 12Z

BW 536
 WW 790
 YW



FEMALE • PUREBRED 94 • RED • POLLED

VV Yellow Bird 213Y

CDGV143477 • VV213Y • 03/18/2011

CE	BW	WW	YW	MK	TM	CED	YG	CW	REA	MB	FT
7	2.4	63	99	30	62	5	-0.19	32	0.34	-0.05	-0.07

JCGR BAR GT FLASHBACK 410M ET
 RID R COLLATERAL 2R
 JCGR BAR GT LONI 27N ET

AR PARAMOUNT 2R
 VV FRANCIS 146T
 VV FRANCIS 65R

P/E MAY 4 TO JULY 25, 2013 TO V V YOU JEST 11Y ET,
 V V YOUR JOKING RIGHT 35Y ET, BLB PLD REVOLVER 12Z

BW 82
 WW 402
 YW 959



FEMALE • PUREBRED 94 • RED • POLLED

VV Yucca Flower 220Y

CDGV143635 • VV220Y • 03/25/2011

CE	BW	WW	YW	MK	TM	CED	YG	CW	REA	MB	FT
9	0.9	77	98	29	67	8	-0.25	28	0.46	-0.21	-0.07

JCGR BAR GT LOUIE 2J
 VV WATER LOU 61W ET
 HDS NIKKI 39N

VV BOODOM 5M
 VV RAOBI 124R
 DVE DAVIDSON MS NAIOMI 77K

P/E MAY 4 TO JULY 25, 2013 TO SLC TOUCHDOWN 82W,
 STON STATESMAN 9Y, V V Z-LONG NECK BOTTLE 109Z

BW 82
 WW 687
 YW 844



FEMALE • PERCENTAGE 75 • RED • POLLED

LCR Xvauna 05X

CDGV143048 • LCR05X • 03/26/2010

CE	BW	WW	YW	MK	TM	CED	YG	CW	REA	MB	FT
1	5.9	69	81	14	48	-1	-0.19	26	0.24	-0.21	-0.08

WTM TWIN STAR PROSPER 51P
 LCR STAR PROSPECT 155S
 LCD NICOLE 155N

LCD KURT 121K
 LCR MICHELLE 5M

P/E MAY 4 TO JULY 25, 2013 TO SLC TOUCHDOWN 82W,
 STON STATESMAN 9Y, V V Z-LONG NECK BOTTLE 109Z

BW 95
 WW 810
 YW 1035



FEMALE • PUREBRED • RED • POLLED

VV Allium Flower 3A

148990 • VV3A • 01/31/2013 • BW: 78
 SIRE: V V ULTRAMATIC 144U



FEMALE • PUREBRED 94 • RED • POLLED

GCC Ribbon 11X

CDGV136083 • GCC11X • 01/18/2010

CE	BW	WW	YW	MK	TM	CED	YG	CW	REA	MB	FT
5	3.0	60	70	20	50	8	-0.17	15	0.13	-0.26	-0.07

BTI EXTRA 2106K ET
 STON JBM SHOWDOWN 3S
 ATC GOLD STAR PLD JASSY 16J

GCC FREE GENT 106N
 DCC RIBBON 118T
 DCC RIBBON 20H

P/E MAY 4 TO JULY 25, 2013 TO SLC TOUCHDOWN 82W,
 STON STATESMAN 9Y, V V Z-LONG NECK BOTTLE 109Z

BW 83
 WW 557
 YW



FEMALE • PUREBRED • RED • POLLED

VV Augustina 169A

149033 • VV169A • 04/01/2013 • BW: 94
 SIRE: FRL FIR RIVER BIG 'N' RICH 438Y



FEMALE • PUREBRED • RED • POLLED

VV A Red Ribbon Girl 110A

149024 • VV110A • 02/28/2013 • BW: 78
 SIRE: FRL FIR RIVER RANALDO 38U



FEMALE • PUREBRED 94 • RED • POLLED

CK Thea 18X

CDGV142659 • CK18X • 02/01/2010

CE	BW	WW	YW	MK	TM	CED	YG	CW	REA	MB	FT
11	1.2	71	99	32	67	8	-0.20	30	0.36	-0.21	-0.07

RWG ROYAL RESERVE 5066
 RWG TARGET 7102
 TSCC TWIN STAR REBA 336R

WGG RAWHIDE 12R
 CK AUTUMN SUNSET 54U
 CK KICKAPOOS MESHA 60M

P/E MAY 4 TO JULY 25, 2013 TO SLC TOUCHDOWN 82W,
 STON STATESMAN 9Y, V V Z-LONG NECK BOTTLE 109Z

CK 18X was another high selling female purchased at the Wish List Sale from the Britains. You are sure to appreciate her.

56

BW 82
 WW 697
 YW

FEMALE • PUREBRED 94 • RED • POLLED

VV Xtensive Lady 19X

CDGV136278 • VV19X • 01/27/2010

CE	BW	WW	YW	MK	TM	CED	YG	CW	REA	MB	FT
10	-0.2	60	63	28	58	8	-0.25	6	0.24	-0.28	-0.07

BTI EXTRA 2106K ET
 VV URBAN PLANET 190U
 DEG LIZA MINNELLI 340L

VV RALLY LOU 16R
 VV SUGAR TOFFEE 127T ET
 GCC RED SUGAR 59K

P/E MAY 4 TO JULY 25, 2013 TO V V YOU JEST 11Y ET,
 V V YOUR JOKING RIGHT 35Y ET, BLB PLD REVOLVER 12Z

V V 19X is another daughter of the lot 144 female. Be sure to capture the genetics of V V 127T. Rally Lou and Red Sugar have had a fantastic influence on the V & V herd.

57

BW 74
 WW 577
 YW 947

FEMALE • PUREBRED 94 • RED • HORNED

VV Xquisite Jewel 24X ET

CDGV136280 • VV24X • 01/28/2010

CE	BW	WW	YW	MK	TM	CED	YG	CW	REA	MB	FT
11	1.6	69	105	32	66	9	-0.16	34	0.28	-0.33	-0.07

DEG PESO 286P
 VV ULTRAMATIC 144U
 DTJ ANITA KAYLA R103

SBR 2085L MARCUS P13
 VV TRUDY 95T
 SLC SADIE 47P

P/E MAY 4 TO JULY 25, 2013 TO SLC TOUCHDOWN 82W,
 STON STATESMAN 9Y, V V Z-LONG NECK BOTTLE 109Z

V V 24X is one of a number of progeny of V V Trudy 95T selling. 95T was the Heifer Calf Champion at Agribition and a donor female at V & V Farms.

58

BW 80
 WW 519
 YW 940

FEMALE • PUREBRED 94 • RED • POLLED

VV Xplosive Lady 31X

CDGV136283 • VV31X • 01/29/2010

CE	BW	WW	YW	MK	TM	CED	YG	CW	REA	MB	FT
10	0.9	77	131	29	67	9	-0.17	49	0.40	-0.32	-0.09

DEG PESO 286P
 VV UDELL 185U
 HL MISS CINNAMON 1P

JCGR BAR GT LOUIE 2J
 VV PHANTOM PRINCESS 99P
 VV MAVIS 3M

P/E MAY 4 TO JULY 25, 2013 TO V V YOU JEST 11Y ET,
 V V YOUR JOKING RIGHT 35Y ET, BLB PLD REVOLVER 12Z

V V 31X is a daughter of the high selling bull, V V 185U, to Fladeland Livestock and out of the V V 99P cow family. 99P's daughters are always some of the most sought after at V & V.

59

BW 90
 WW 551
 YW 1218

FEMALE • PUREBRED • BLACK • POLLED

VV Antolia 58A

149121 • VV58A • 02/17/2013 • BW: 74
 SIRE: V V X-RATED 88X ET

58A

FEMALE • PUREBRED 88 • RED • POLLED

VV Xtremely Glamorous 32X

CDGV136284 • VV32X • 01/29/2010

CE	BW	WW	YW	MK	TM	CED	YG	CW	REA	MB	FT
7	3.6	74	102	22	59	5	-0.21	35	0.45	-0.30	-0.07

GKT BUD 11G
 JCGR BAR GT LOUIE 2J
 049C

VV RENASCANCE JESTER 79R
 VV U'R JESTING MORENA 77U
 FUN FREE MORENA 51M

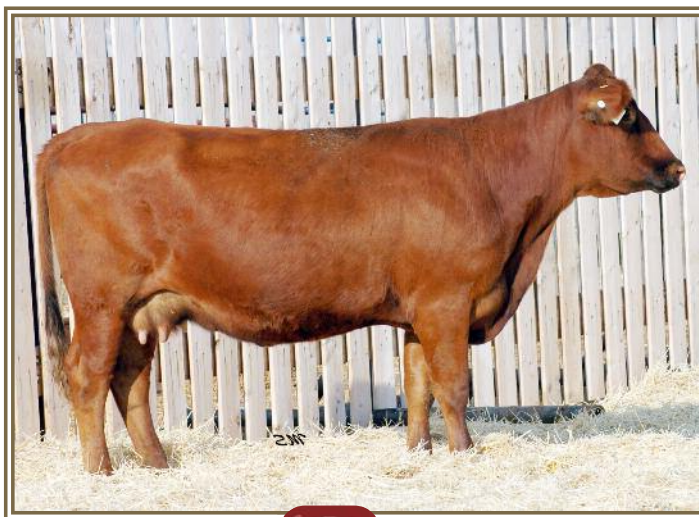
P/E MAY 4 TO JULY 25, 2013 TO V V YOU JEST 11Y ET,
 V V YOUR JOKING RIGHT 35Y ET, BLB PLD REVOLVER 12Z

Her dam sells as lot 125.

60

BW 88
 WW 609
 YW 1103

GKT BOO BOO 155E
 GKT KATIE
 PGRS SHINING SPIRIT
 041Z
 VV BOODOM 5M
 LTC RIDGE STAR PLD JEST 280J
 SLC FREEDOM 178F ET



LOT 59 VV XPLOSIVE LADY 31X

FEMALE • PUREBRED 94 • RED • POLLED

PV Sweet Julie 38X

CDGV135619 • PV38X • 02/09/2010

CE	BW	WW	YW	MK	TM	CED	YG	CW	REA	MB	FT
8	0.4	48	60	40	64	9	-0.29	6	0.24	-0.21	-0.08

ORM EXCALIBUR 158N
 DCC STOUT 22S
 LEF PLD LILLIAN 8N

DTJ SUPER STAR CADDY 144M
 DTJ SWEET JULIE S50
 DTJ PLD MISS JULIE KAY 4K

P/E MAY 4 TO JULY 25, 2013 TO SLC TOUCHDOWN 82W,
 STON STATESMAN 9Y, V V Z-LONG NECK BOTTLE 109Z

Her dam sells as lot 125.

61

BW 89
 WW 579
 YW 749

FEMALE • PUREBRED 94 • RED • POLLED

VV Xtra Success 48X

CDGV136290 • VV48X • 01/31/2010

CE	BW	WW	YW	MK	TM	CED	YG	CW	REA	MB	FT
10	1.6	71	101	27	63	10	-0.19	32	0.36	-0.28	-0.07

DEG PESO 286P
 VV UBET ON ME 160U
 VV REDCLIFF'S LOUISE 6P

EGL EL DORADO L058
 DTJ ANITA KAYLA R103
 DTJ PLD ANITA KAYLA 18K ET

P/E MAY 4 TO JULY 25, 2013 TO SLC TOUCHDOWN 82W,
 STON STATESMAN 9Y, V V Z-LONG NECK BOTTLE 109Z

V V 48X is one more powerful, unique individual that is from the same
 dam as the V & V herdsire, V V Ultramatic 144U, and sired by the high
 selling bull to Nelson Gelbvieh

DEG MONAHAN 293M
 DEG JYSSICA 286J
 JCGR BAR GT LOUIE 2J
 JC PEMBINA KAY 583K
 EGL EXECUTIVE J159
 EGL J036 ET
 NGAC REMITALL FIRE POWER 101F
 BB MISS 61Y

62

BW 88
 WW 555
 YW 1033

FEMALE • PUREBRED 94 • RED • POLLED

FRSQ Foursquare Xtra Hot 73X

CDGV136392 • FRSQ73X • 02/08/2010

CE	BW	WW	YW	MK	TM	CED	YG	CW	REA	MB	FT
6	3.7	58	73	32	61	4	-0.23	18	0.18	-0.25	-0.09

TJB ABSOLUTE 211L - ET
 WJW DOUBLE U JERICHO 644S
 DKM CHARMAC MS LEA MAE 13K

OAR MO-ROC MONTGOMERY 7M
 FRSQ FOURSQUARE PIXY 73P
 TSCC TWIN STAR KATLYN 992K

P/E MAY 4 TO JULY 25, 2013 TO SLC TOUCHDOWN 82W,
 STON STATESMAN 9Y, V V Z-LONG NECK BOTTLE 109Z

A son is working in the David Graham herd.

JCGR BAR GT ICON 1115F
 SLC ANITA 19F ET
 LEF CORY 128H
 EWJ WHISKEY HILL CORINNE
 SLC FREEDOM 178F ET
 OAR MO-ROC 109K
 KFW POLLED DELETOR 32D
 KFW LONE STAR MS JAGUAR 991C

63

BW 86
 WW 523
 YW 1046

FEMALE • PUREBRED 94 • RED • POLLED

OAR Mo-Roc Xavier 75X

CDGV137283 • OAR75X • 02/28/2010

CE	BW	WW	YW	MK	TM	CED	YG	CW	REA	MB	FT
3	3.9	55	70	30	58	6	-0.24	17	0.30	-0.10	-0.07

SLC MASTER PLAN 134N
 SLC MASTERPLAN 140S
 SLC ANITA 133N

PAN PANDA LITE-N-DAY 228L
 OAR MO-ROC SHEREE 100S
 OAR MO-ROC 59K

P/E MAY 4 TO JULY 25, 2013 TO V V YOU JEST 11Y ET,
 V V YOUR JOKING RIGHT 35Y ET, BLB PLD REVOLVER 12Z

SLC LATIGO 118L
 BTI MS CHARLA 2191F
 SLC HEAVY FP KIOSK 115K
 SLC ANITA 19F ET
 VAA LEACHMAN NEW DAY 205B
 PAN PANDA JADE FROST 135J
 DSP COUGAR 1C
 OAR MO-ROC 19F

64

BW 96
 WW 560
 YW

FEMALE • PERCENTAGE 50 • RED • POLLED

VV Xtra Perfect 85X

CDGV136379 • VV85X • 02/05/2010

CE	BW	WW	YW	MK	TM	CED	YG	CW	REA	MB	FT
10	-2.3	47	61	24	48	4	-0.23	3	0.28	0.05	-0.05

JCGR BAR GT LOUIE 2J
 VV TIGER LOU 140T ET
 AR LADY GRIMSHAW 1G

GKT BUD 11G
 049C
 FLGY 1110A
 AR LADY ERIN 21E

P/E MAY 4 TO JULY 25, 2013 TO V V YOU JEST 11Y ET,
 V V YOUR JOKING RIGHT 35Y ET, BLB PLD REVOLVER 12Z

65

BW 70
 WW 501
 YW 879



LOT 65 VV XTRA PERFECT 85X



FEMALE • PUREBRED 88 • RED • POLLED

VV Judge Judy 89X

CDGV136380 • VV89X • 02/07/2010

CE	BW	WW	YW	MK	TM	CED	YG	CW	REA	MB	FT
7	0.7	51	61	26	52	7	-0.21	7	0.18	-0.09	-0.06

JDPD ROLEX 151M
 JDPD MOVADO 407T
 HAD PRINCESS OF ALOT 407P

LTC RIDGE STAR HOLMAN 123H
 SPG SUNNY PLAIN JUNO 809U
 LANG BLACK ROSETTA 82S

P/E MAY 4 TO JULY 25, 2013 TO SLC TOUCHDOWN 82W,
 STON STATESMAN 9Y, V V Z-LONG NECK BOTTLE 109Z

BW 80
 WW 549
 YW 937



FEMALE • PERCENTAGE 75 • RED • POLLED

VV Xcuse Me 97X

CDGV136239 • VV97X • 02/09/2010

CE	BW	WW	YW	MK	TM	CED	YG	CW	REA	MB	FT
6	1.9	74	118	26	62	4	-0.11	43	0.32	-0.09	-0.06

TLR COCOA 35C
 JHL LCHMN CHRONICLE 8011H
 LCHMN OMC GV F8038

BARM RED BAR M R PAY DAY 11R
 CVF CREST VIEW TRINITY 5T
 CVF CREST VIEW RUMER 85R

P/E MAY 4 TO JULY 25, 2013 TO SLC TOUCHDOWN 82W,
 STON STATESMAN 9Y, V V Z-LONG NECK BOTTLE 109Z

Dam sells as lot 135

BW 82
 WW 547
 YW 1090



FEMALE • PUREBRED • RED • POLLED

VV Annie 27A

149149 • VV27A • 02/10/2013 • BW: 80
 SIRE: FRL FIR RIVER RANALDO 38U



FEMALE • PUREBRED 94 • RED • POLLED

VV Xtra Cutie 102X

CDGV136241 • VV102X • 02/13/2010

CE	BW	WW	YW	MK	TM	CED	YG	CW	REA	MB	FT
2	6.0	76	110	26	63	6	-0.14	44	0.25	-0.26	-0.08

DL JEN-TY RAMBO 205P
 VCR SIX PACK 25S
 VV LOIS 21L

ATC GOLD STAR HARD BODY 146H
 NGC VELVET DREAM 3P
 NGC MAJESTIC ANGEL 2L

P/E MAY 4 TO JULY 25, 2013 TO V V YOU JEST 11Y ET,
 V V YOUR JOKING RIGHT 35Y ET, BLB PLD REVOLVER 12Z

BW 112
 WW 502
 YW 1057



FEMALE • BALANCER • RED • POLLED

VV Adolpha 118A

149054 • VV118A • 03/02/2013 • BW: 94
 SIRE: BBC RED BLAIR'S SQUALL 981W



FEMALE • PUREBRED 94 • RED • POLLED

VV Lexxus 103X

CDGV136242 • VV103X • 02/14/2010

CE	BW	WW	YW	MK	TM	CED	YG	CW	REA	MB	FT
6	2.8	65	82	26	59	8	-0.21	22	0.26	-0.28	-0.07

VV RENASANCE JESTER 79R
 VV UR JEST'N'TIME 72U
 TSCC TWIN STAR POLLY 906P

JCGR BAR GT LOUIE 2J
 DTJ NAZEREEN R1
 VV NAZEREEN 3N

P/E MAY 4 TO JULY 25, 2013 TO SLC TOUCHDOWN 82W,
 STON STATESMAN 9Y, V V Z-LONG NECK BOTTLE 109Z

The Nazereen cow family has raised a number of top selling individuals
 at V & V Farms. You can expect consistency and quality in this female's
 calves.

BW 88
 WW 548
 YW 934



FEMALE • PUREBRED 94 • RED • POLLED

VV Xpect More 112X

CDGV136245 • VV112X • 02/18/2010

CE	BW	WW	YW	MK	TM	CED	YG	CW	REA	MB	FT
10	-1.1	58	72	30	59	7	-0.32	10	0.39	-0.17	-0.08

DL JEN-TY RAMBO 205P
 VCR SIX PACK 25S
 VV LOIS 21L

DL JEN-TY BLK THUNDER 154L
 HDS NIKKI 39N
 HDS 16L

P/E MAY 4 TO JULY 25, 2013 TO SLC TOUCHDOWN 82W,
 STON STATESMAN 9Y, V V Z-LONG NECK BOTTLE 109Z

V V 112X is a direct daughter of VCR 25S, the high selling bull when he
 was purchased from Vale Country Ranch. Her dam, HDS 39N, was
 highlighted in V & V Farms embryo transplant program.

BW 82
 WW 537
 YW 1031



FEMALE • PUREBRED • RED • POLLED

VV Lexxus RX 114A

149065 • VV114A • 03/01/2013 • BW: 86
 SIRE: FRL FIR RIVER RANALDO 38U



FEMALE • PUREBRED • RED • POLLED

VV Alexa 103A

149068 • VV103A • 02/27/2013 • BW: 38
 SIRE: SLC TYE 476T ET



FEMALE • PUREBRED 94 • RED • POLLED

VV Xpect More 119X

CDGV136249 • VV119X • 02/19/2010

72

CE	BW	WW	YW	MK	TM	CED	YG	CW	REA	MB	FT
8	0.6	56	60	26	54	6	-0.35	5	0.41	-0.25	-0.08

DL JEN-TY RAMBO 205P
 VCR SIX PACK 25S
 VV LOIS 21L

AR COLE 26M
 AR JENNY 47P
 AR 63K

P/E MAY 4 TO JULY 25, 2013 TO SLC TOUCHDOWN 82W,
 STON STATESMAN 9Y, V V Z-LONG NECK BOTTLE 109Z

V V 119X is a daughter of the high selling VCR 25S and out of one of the very top cows in the breed - AR 47P. Here influence is wide spread throughout the Gelbvieh breed.

BW 86
 WW 543
 YW 913

FEMALE • PUREBRED • RED • POLLED

VV Annona 21A

149070 • VV21A • 02/08/2013 • BW: 68
 SIRE: FRL FIR RIVER RANALDO 38U

72A

FEMALE • PUREBRED 94 • RED • POLLED

VV Xtra Best 123X

CDGV136252 • VV123X • 02/20/2010

73

CE	BW	WW	YW	MK	TM	CED	YG	CW	REA	MB	FT
7	2.1	71	100	25	61	6	-0.21	32	0.31	-0.26	-0.08

DL JEN-TY RAMBO 205P
 VCR SIX PACK 25S
 VV LOIS 21L

TSCC TWIN STAR ROSARRIO 670R
 NLG PLD NORTHERN TOFFEE 35T
 NLG PLD MERCEDES 10M

P/E MAY 4 TO JULY 25, 2013 TO SLC TOUCHDOWN 82W,
 STON STATESMAN 9Y, V V Z-LONG NECK BOTTLE 109Z

Dam sells as lot 137.

BW 88
 WW 579
 YW 1150

FEMALE • PUREBRED • RED • POLLED

VV Amabel 61A

149072 • VV61A • 02/17/2013 • BW: 84
 SIRE: SLC TOUCHDOWN 84W

73A

FEMALE • PERCENTAGE 75 • RED • POLLED

VV Xpress Lady 148X

CDGV136257 • VV148X • 03/02/2010

75

CE	BW	WW	YW	MK	TM	CED	YG	CW	REA	MB	FT
7	0.5	50	37	27	52	5	-0.30	-9	0.22	-0.21	-0.07

DNA DISQUALIFIED SIRE
 DF RED ROVER 56U
 AR JENNY 47P

DF PROFIT 5P
 VV TRIXIE 181T
 JC PEMBINA PEARL 639P

P/E JUNE 7 TO AUGUST 6, 2013 TO SLC TOUCHDOWN 84W,
 V V XCALIBRE 101X

Dam sells as lot 150

AR COLE 26M
 AR 63K

BTI RED ALERT 2077K
 AR JULIE 14J
 DEG MEL GIBSON 72M
 JC PEMBINA HESTER 511H

BW 86
 WW 596
 YW 801



REF AR JENNY 47P - DAM OF LOT 72



LOT 74 VV XTRA HIGH 133X

FEMALE • PERCENTAGE 50 • RED • POLLED

VV Xtra High 133X

CDGV136254 • VV133X • 02/23/2010

74

CE	BW	WW	YW	MK	TM	CED	YG	CW	REA	MB	FT
8	-0.5	45	38	25	47	3	-0.31	-9	0.23	-0.12	-0.07

DNA DISQUALIFIED SIRE
 DF RED ROVER 56U
 AR JENNY 47P

AR COLE 26M
 AR 63K

VV RANDI-LEE 23R
 LTC GOLD STAR 204F

ATC GOLD STAR AUSTRIA 10A
 ATC GOLD STAR 4C

P/E MAY 4 TO JULY 25, 2013 TO SLC TOUCHDOWN 82W,
 STON STATESMAN 9Y, V V Z-LONG NECK BOTTLE 109Z

BW 82
 WW 534
 YW 846



FEMALE • PUREBRED 94 • RED • POLLED

VV Xpress Gal 153X

CDGV136260 • VV153X • 03/04/2010

CE	BW	WW	YW	MK	TM	CED	YG	CW	REA	MB	FT
9	0.0	56	65	29	57	8	-0.30	8	0.33	-0.21	-0.08

DL JEN-TY RAMBO 205P
 VCR SIX PACK 25S
 VV LOIS 21L

ULL LIMITED EDITION 16P
 VV SWEET DREAMS 82T
 NGC VELVET DREAM 3P

P/E MAY 4 TO JULY 25, 2013 TO SLC TOUCHDOWN 82W,
 STON STATESMAN 9Y, V V Z-LONG NECK BOTTLE 109Z

Dam sells as lot 150



FEMALE • PUREBRED 94 • RED • POLLED

VV Xtra Keem 154X

CDGV136260 • VV153X • 03/04/2010

CE	BW	WW	YW	MK	TM	CED	YG	CW	REA	MB	FT
7	-0.2	55	73	31	58	10	-0.29	13	0.33	-0.23	-0.08

DL JEN-TY RAMBO 205P
 VCR SIX PACK 25S
 VV LOIS 21L

ARN SIR ARNOLD K114
 HL MISS CINNAMON 1P
 HL FINAL DANCE 30M

P/E MAY 4 TO JULY 25, 2013 TO V V YOU JEST 11Y ET,
 V V YOUR JOKING RIGHT 35Y ET, BLB PLD REVOLVER 12Z

154X is a maternal sister to the lot 24 yearling heifer. Be sure to check out this family.



FEMALE • PUREBRED 94 • RED • POLLED

VV Xpress Mail 159X

CDGV136262 • VV159X • 03/07/2010

CE	BW	WW	YW	MK	TM	CED	YG	CW	REA	MB	FT
10	-1.8	43	37	34	56	7	-0.35	-12	0.21	-0.20	-0.08

DL JEN-TY RAMBO 205P
 VCR SIX PACK 25S
 VV LOIS 21L

CES DECKA DIAGO 42P
 VV SUSAN 146S
 VV MARY 19M

P/E MAY 4 TO JULY 25, 2013 TO SLC TOUCHDOWN 82W,
 STON STATESMAN 9Y, V V Z-LONG NECK BOTTLE 109Z

V V 159X is an impressive young female that is sired by VCR 25S and out of the lot 159 female. This has been a very consistent quality producing line at V & V.



FEMALE • PUREBRED 94 • RED • POLLED

VV Xploding Jewel 196X

CDGV136264 • VV165X • 03/14/2010

CE	BW	WW	YW	MK	TM	CED	YG	CW	REA	MB	FT
12	-1.4	52	63	25	51	9	-0.38	4	0.55	-0.10	-0.07

JCGR BAR GT LOUIE 2J
 VV TRUEMAN 22T
 TSCC TWIN STAR MISS 900R

GKT BOO BOO 155E
 VV NOELLE 1N
 SLC MISS SWEETIE 149G

P/E MAY 4 TO JULY 25, 2013 TO SLC TOUCHDOWN 82W,
 STON STATESMAN 9Y, V V Z-LONG NECK BOTTLE 109Z

V V 165X is another quality daughter of V V Noelle 1N. She has a solid reputation for producing the right kind and so does her daughters. V & V's bull market demands that their cows delivery on calving ease, growth performance, maternal strength and physical soundness. This cow family has all these necessary traits.



FEMALE • PUREBRED • BLACK • POLLED

VV Andrea 99A

149093 • VV99A • 02/27/2013 • BW: 78
 SIRE: V V X-RATED 88X ET



FEMALE • PUREBRED 94 • RED • POLLED

VV Xpect Cash 168X

CDGV136265 • VV168X • 03/18/2010

CE	BW	WW	YW	MK	TM	CED	YG	CW	REA	MB	FT
10	1.4	59	78	32	62	10	-0.20	18	0.17	-0.31	-0.07

VV RENASANCE JESTER 79R
 VV UR JEST'N'TIME 72U
 TSCC TWIN STAR POLLY 906P

SBR 2085L MARCUS P13
 VV TRUDY 95T
 SLC SADIE 47P

P/E MAY 4 TO JULY 25, 2013 TO SLC TOUCHDOWN 82W,
 STON STATESMAN 9Y, V V Z-LONG NECK BOTTLE 109Z

This three-year-old daughter of V V Trudy 95T will impress you. She is consistent with her genetic contemporaries and absolutely unique when compared against the Gelbvieh population.



FEMALE • PUREBRED 94 • RED • POLLED

VV Xpect The Best

CDGV136266 • VV169X • 03/19/2010

CE	BW	WW	YW	MK	TM	CED	YG	CW	REA	MB	FT
9	-0.1	43	51	39	60	11	-0.35	0	0.32	-0.27	-0.08

EGL PABST L011 ET
 VV TIZIANO 151T
 GCC PLD RIBBON 204K

DTJ FIRE POWER JAKE 16J ET
 WGG MADEMOISELLE TRIX 68M
 WGG KICKAPOO LADY 13K

P/E MAY 4 TO JULY 25, 2013 TO SLC TOUCHDOWN 82W,
 STON STATESMAN 9Y, V V Z-LONG NECK BOTTLE 109Z

The Tiziano daughters are very popular at V & V Farms. His pedigree includes the great performance stats of Pabst and the top maternal value of the Sweathart Champion GCC Pld Ribbon 204K. Her dam's sons were very popular in the Annual Bull Sale. A son sold to Dar-Lin Ranching this past spring.



FEMALE • PUREBRED • BLACK • POLLED

VV A Lot of Cash 18A

149101 • VV18A • 02/08/2013 • BW: 62
 SIRE: V V X-RATED 88X ET



FEMALE • PUREBRED • RED • POLLED

VV Alexandria 100A

149103 • VV100A • 02/27/2013 • BW: 70
 SIRE: FRL FIR RIVER RANALDO 38U



FEMALE • PUREBRED 94 • RED • POLLED

VV Xtra Couragous 170X

CDGV136267 • VV170X • 03/19/2010

82

CE	BW	WW	YW	MK	TM	CED	YG	CW	REA	MB	FT
9	-0.3	55	84	31	59	6	-0.22	19	0.36	-0.25	-0.06

JHL LCHMN CHRONICLE 8011H
 FRL FIR RIVER RANALDO 38U
 FRL FIR RIVER CHERRY 73R

VV BOODOM 5M
 VV PENELOPE 39P
 RVD RAINBOW DEN EVELYN 56E

TLR COCOA 35C
 LCHMN OMC GV F8038
 JCGR BAR GT LOUIE 2J
 CCF GREAT LAKES KATIE 42K
 SLC FREEDOM 178F ET
 JBM ALVA 23K
 RVD RAINBOW'S LADY'S MAN 75Y
 LAF L.A. 56N

P/E MAY 4 TO JULY 25, 2013 TO SLC TOUCHDOWN 82W,
 STON STATESMAN 9Y, V V Z-LONG NECK BOTTLE 109Z

V V 170X is a very impressive daughter of FRL 38U. She has the style, balance and maternal strength to raise the top calves. The FRL 38U progeny are exceptional and you are sure to agree.

BW 90
 WW 508
 YW 1071

FEMALE • PUREBRED • BLACK • POLLED

VV Amber 77A

149102 • VV77A • 02/19/2013 • BW: 82
 SIRE: V V X-RATED 88X ET

82A

FEMALE • PUREBRED 94 • RED • POLLED

VV Xpect To Be Perfect 176X

CDGV136269 • VV176X • 03/27/2010

83

CE	BW	WW	YW	MK	TM	CED	YG	CW	REA	MB	FT
9	-1.4	54	77	37	64	7	-0.28	13	0.41	-0.21	-0.07

JHL LCHMN CHRONICLE 8011H
 FRL FIR RIVER RANALDO 38U
 FRL FIR RIVER CHERRY 73R

ULL LIMITED EDITION 16P
 VV PARKLAND 113S
 SLC PARKLAND 82P

TLR COCOA 35C
 LCHMN OMC GV F8038
 JCGR BAR GT LOUIE 2J
 CCF GREAT LAKES KATIE 42K
 JRI PD RESOURCE 197E51
 DEG BURNING EMBER 272J ET
 NGAC REMITALL PLD EXCEL 232E
 SLC COPPER PARKLAND 139G

P/E MAY 4 TO JULY 25, 2013 TO SLC TOUCHDOWN 82W,
 STON STATESMAN 9Y, V V Z-LONG NECK BOTTLE 109Z

BW 74
 WW 534
 YW 1020

FEMALE • PERCENTAGE 50 • RED • POLLED

VV Aveline 164A

149105 • VV164A • 03/31/2013 • BW: 80
 SIRE: SLC RED ANGUS BULL

83A

FEMALE • PUREBRED 94 • RED • POLLED

FRL Fir River Seka 220X

CDGV136621 • FRL220X • 01/14/2010

85

CE	BW	WW	YW	MK	TM	CED	YG	CW	REA	MB	FT
9	1.9	60	74	30	60	8	-0.22	16	0.39	-0.11	-0.05

SLC MASTER PLAN 134N
 SLC MASTERPLAN 512T
 SLC MISS BLACK LASS 120H

EGL PABST L011 ET
 FRL FIR RIVER PARIS 45U
 DVE DAVIDSON MS JULIO 48R

SLC LATIGO 118L
 BTI MS CHARLA 2191F
 XZR C342 (STUBBY)
 SLC BLACK LASS 98D
 JCGR BAR GT PARADIGM 2H ET
 EGL PHOEBE G374
 LCS DAVIDSON PLD JULIO 432J
 DVE DAVIDSON MISS 55J

P/E MAY 4 TO JULY 25, 2013 TO V V YOU JEST 11Y ET,
 V V YOUR JOKING RIGHT 35Y ET, BLB PLD REVOLVER 12Z

FRL 220X is a direct daughter of Fir River's Master Plan son and out of a daughter sired by the high performance Pabst bull. If you are looking for that special cow to raise herd bulls, 220X could be the one.

BW 82
 WW
 YW

BULL • PUREBRED • RED • POLLED

VV Aldrich 39A

149016 • VV39A • 02/13/2013 • BW: 70
 SIRE: SLC TOUCHDOWN 84W

85A



LOT 82 VV XTRA COURAGOUS 170X



REF GCC PLD RIBBON 204K - DAM OF LOT 84

FEMALE • PUREBRED 88 • RED • POLLED

VV Xtra Ribbons 203X ET

CDGV136493 • VV203X • 01/29/2010

84

CE	BW	WW	YW	MK	TM	CED	YG	CW	REA	MB	FT
6	0.2	54	71	29	55	10	-0.28	12	0.28	-0.25	-0.08

SPG PLD SUNNY PLAIN HERO
 SPG SUNNY PLAIN TOPPER 702T
 SPG SUNNY PLAIN JOYCE 127R

VDG VAN DEAU BLUE SUEDE SHOE
 GCC PLD RIBBON 204K
 GCC PLD RIBBON 41G

BTI RED ALERT 2077K
 SPG PLD SUNNY PLAIN NIXIE 18
 SLC TOP SHELF 2N
 DKM CHARMAC MS. JOYCE 42J
 BTI ELVIS 2155E
 WGG EVENING TWILIGHT 212E
 LEF POLLED WHAMOO 14E
 GCC RIBBON 5C

P/E JUNE 7 TO AUGUST 6, 2013 TO SLC TOUCHDOWN 84W,
 V V XCALIBRE 101X

BW 539
 WW 739
 YW

V V 203X is right from the heart of V & V's transplant program. She is sired by the high selling Topper bull who sired good thick performance calves and out of the Sweatheart Classic Champion, GCC Pld Ribbon 204K. There is not any guess work in this complete pedigree. Her full sister sells as lot 98.





LOT 87 VV WINDERMERE 13W

FEMALE • PUREBRED 94 • RED • POLLED

VV Wynonna 1W

CDGV130977 • VV1W • 01/17/2009

CE	BW	WW	YW	MK	TM	CED	YG	CW	REA	MB	FT
10	0.3	75	105	28	66	8	-0.29	32	0.64	-0.13	-0.07

GKT BUD 11G
 JCGR BAR GT LOUIE 2J
 049C

GKT BOO BOO 155E
 VV MEGHAN 6M
 GCC RED SUGAR 59K

P/E MAY 4 TO JULY 25, 2013 TO SLC TOUCHDOWN 82W,
 STON STATESMAN 9Y, V V Z-LONG NECK BOTTLE 109Z

V V 1W's brothers sired by Louie were the high selling bulls at the V & V Sale for a number of years. She has the same good attributes plus the added genetics of the GCC Red Sugar influence in her pedigree. Just a four-year-old with plenty more calves to come.

86

BW	70
WW	546
YW	1008

FEMALE • PUREBRED • RED • POLLED

VV Ashley 137A

149114 • VV137A • 03/15/2013 • BW: 90
 SIRE: SLC TYE 476T ET

86A

FEMALE • PUREBRED 94 • RED • POLLED

Pan Panda Why Not 1023W

CDGV131775 • PAN1023W • 04/19/2009

CE	BW	WW	YW	MK	TM	CED	YG	CW	REA	MB	FT
5	1.7	54	70	36	63	9	-0.20	13	0.28	-0.13	-0.05

ULL LIMITED EDITION 16P
 VV SECOND EDITION 116S
 SLC ANITA 68L ET

PAN PANDA MEDIATOR 332M
 PAN PANDA TROPHY 840T
 PAN PANDA PLATINUM 496P

P/E MAY 4 TO JULY 25, 2013 TO V V YOU JEST 11Y ET,
 V V YOUR JOKING RIGHT 35Y ET, BLB PLD REVOLVER 12Z

BW	83
WW	529
YW	1169

BULL • PUREBRED • RED • POLLED

VV Aspire To Greatness 160A

149049 • VV160A • 03/25/2013 • BW: 88
 SIRE: FRL FIR RIVER RANALDO 38U

88A

FEMALE • PUREBRED 94 • RED • POLLED

VV Windermere 13W

CDGV130989 • VV13W • 01/28/2009

CE	BW	WW	YW	MK	TM	CED	YG	CW	REA	MB	FT
2	3.0	70	99	30	65	7	-0.17	32	0.34	-0.21	-0.06

JEB POLLED GIZMO 17Z
 SPUR BERETTA 703G
 SPUR VANESSA 19E ET

DL JEN-TY COPPER 100N
 DEG SUSANNE 713S
 LC WANDERING HALLEY 451H

P/E JUNE 7 TO AUGUST 6, 2013 TO SLC TOUCHDOWN 84W,
 V V XCALIBRE 101X

V V 13W is a superb female in a very complete package. She is dark red, deep sided, and feminine with an absolutely awesome structure. You will love the way her dam is made; she sells as lot 164.

87

BW	90
WW	526
YW	974

FEMALE • PUREBRED 94 • RED • POLLED

VV Wynndel 27W

CDGV131001 • VV27W • 02/01/2009

CE	BW	WW	YW	MK	TM	CED	YG	CW	REA	MB	FT
12	-1.5	54	74	29	56	10	-0.26	11	0.32	-0.11	-0.07

SLC FREEDOM 178F ET
 JRI HEAVY EQUIPMENT 125M3
 JRI MS PLD GRAND PRIX 125G3

GKT BOO BOO 155E
 VV NOELLE 1N
 SLC MISS SWEETIE 149G

P/E MAY 4 TO JULY 25, 2013 TO SLC TOUCHDOWN 82W,
 STON STATESMAN 9Y, V V Z-LONG NECK BOTTLE 109Z

Here is another fantastic daughter of V V 1N sired by none other than Heavy Equipment. Take the opportunity to check out all the sisters in the sale. You are sure to agree with what they can offer to the future of the breed.

89

BW	70
WW	
YW	



LOT 92 CVF CRESTVIEW MANDY 39W

FEMALE • PUREBRED 94 • RED • POLLED

VV Winter Wind 28W

CDGV131002 • VV28W • 02/01/2009

CE	BW	WW	YW	MK	TM	CED	YG	CW	REA	MB	FT
8	-0.4	53	58	30	57	6	-0.30	3	0.41	-0.19	-0.06

GKT BUD 11G
 JCGR BAR GT LOUIE 2J
 049C

EGF MR 709R (DOC)
 SLC ANITA 68L ET
 BB MISS 61Y

P/E MAY 4 TO JULY 25, 2013 TO SLC TOUCHDOWN 82W,
 STON STATESMAN 9Y, V V Z-LONG NECK BOTTLE 109Z

What an impressive set of young cows and V V 28W fits right into that mould. She is a Louie daughter out of the SLC Anita female with none other than BB Miss 61Y in her pedigree. She is feminine made and very broody in her design.

BW 72
WW 558
YW 705

FEMALE • PUREBRED • RED • POLLED

VV Wind In The Wire 163A

149193 • VV163A • 03/29/2013 • BW: 80
 SIRE: FRL FIR RIVER RANALDO 38U

FEMALE • PUREBRED 94 • RED • POLLED

CVF Crestview Mandy 39W

CDGV135099 • CVF39W • 01/26/2009

CE	BW	WW	YW	MK	TM	CED	YG	CW	REA	MB	FT
9	-0.1	56	83	32	60	10	-0.22	19	0.19	-0.28	-0.08

JRI HEAVY EQUIPMENT 125M3
 VV TOP HEAVY 8T
 TSCC TWIN STAR KAYCEE 706K

SLC FREEDOM 178F ET
 DTJ MANDY 17M
 ATC GOLD STAR KANDY 72K

P/E MAY 4 TO JULY 25, 2013 TO SLC TOUCHDOWN 82W,
 STON STATESMAN 9Y, V V Z-LONG NECK BOTTLE 109Z

CVF 39W is a powerhouse female with more than ample performance. She is the kind that will raise you future herd sires. Her sire, V V 8T, was a high selling bull when purchased by Crestview. Her dam has an excellent pedigree including not only Freedom but the top producing female purchased from Carlson's "5D" shows up in her pedigree again.

BW 80
WW 542
YW 899

BW 81
WW 542
YW 899

FEMALE • PUREBRED 94 • RED • POLLED

VV Wirral 37W

CDGV131011 • VV37W • 02/03/2009

CE	BW	WW	YW	MK	TM	CED	YG	CW	REA	MB	FT
7	-0.2	68	90	22	56	8	-0.25	22	0.34	-0.18	-0.08

CZM FAIRYVALE XCELERATOR 1X
 ATC GOLD STAR POLLED 5D
 ATC GOLD STAR ET 92A

JCGR BAR GT LOUIE 2J
 FRL FIR RIVER SWOOSH 3S
 FRL FIR RIVER MISS JEWEL 10P

P/E MAY 4 TO JULY 25, 2013 TO SLC TOUCHDOWN 82W,
 STON STATESMAN 9Y, V V Z-LONG NECK BOTTLE 109Z

This daughter of "5D" and FRL 3S will compliment anyone's program. When you combine the superior bulls of the breed that pass on relevant traits the results are fantastic and V V 37W exemplifies those top-quality traits. A maternal brother sold to Diane Panrucker for \$7200.

VSD GOLD DUST HI HOPE
 CZM FAIRYVALE HOLLY
 ATC GOLD STAR 4W
 RLR EMMA 100G
 GKT BUD 11G
 049C
 SLC FREEDOM 178F ET
 DVE DAVIDSON MS PLD FAY 118M

BW 78
WW 595
YW 877

FEMALE • PERCENTAGE 75 • RED • POLLED

VV Why The Jest 41W

CDGV131015 • VV41W • 02/03/2009

CE	BW	WW	YW	MK	TM	CED	YG	CW	REA	MB	FT
8	1.5	62	85	32	63	9	-0.17	22	0.19	-0.29	-0.07

VV BOODOM 5M
 VV RENASANCE JESTER 79R
 LTC RIDGE STAR PLD JEST 280J

SLC FREEDOM 178F ET
 FUN FREE MORENA 51M

P/E MAY 4 TO JULY 25, 2013 TO SLC TOUCHDOWN 82W,
 STON STATESMAN 9Y, V V Z-LONG NECK BOTTLE 109Z

SLC FREEDOM 178F ET
 JBM ALVA 23K
 ATC GOLD STAR POLLED 5D
 LTC RIDGE STAR 67F
 VAA LEACHMAN NEW DAY 205B
 BB MISS 61Y

BW 68
WW 537
YW 772

FEMALE • PUREBRED • RED • POLLED

VV Aisha 132A

149133 • VV132A • 03/11/2013 • BW: 88
 SIRE: V V YOU JEST 11Y ET

FEMALE • PUREBRED 94 • RED • POLLED

VV Why The Queen 62W

CDGV131033 • VV62W • 02/06/2009

CE	BW	WW	YW	MK	TM	CED	YG	CW	REA	MB	FT
10	0.8	68	90	27	60	6	-0.22	23	0.33	-0.30	-0.07

JRI PD RESOURCE 197E51
 MMM CALBERTA RESOURCE 8307H
 MMM CALBERTA MMM 308D

ATM TEJAS ROLLS ROYCH 868
 JRI MS PLD PERFORMER 197C4
 HHF POLLED SUMMIT 648U
 TRA PRINCESS 220X
 VAA LEACHMAN NEW DAY 205B
 BB MISS 61Y
 AMV POLLED FAR HORIZON 24F
 TPG MISS DAKOTA 37D

SLC FREEDOM 178F ET
 NGC QUEEN OF HEARTS 42R
 TPG POLLED JAYNA 49J

P/E MAY 4 TO JULY 25, 2013 TO SLC TOUCHDOWN 82W,
 STON STATESMAN 9Y, V V Z-LONG NECK BOTTLE 109Z

V V 62W is a thick, dark red female with a great future. With her dam from Britains and the good performance of her sire you can be assured of excellent results.

BW 82
 WW 558
 YW 892



LOT 94 VV WHY THE QUEEN 62W

FEMALE • PUREBRED 94 • RED • POLLED

VV Why "O" Why 75W

CDGV131043 • VV75W • 02/09/2009

CE	BW	WW	YW	MK	TM	CED	YG	CW	REA	MB	FT
9	1.2	73	102	28	65	14	-0.03	31	0.08	-0.20	-0.04

ARN SIR ARNOLD Z888
 GAA GARST LEACHMAN C3485
 GAA GARST COW Z164

ATM TEJAS ROLLS ROYCH 868
 ARN MS ARNOLD 888X
 GAA MAGNUM P.I.
 GAA X716
 BTI RED ALERT 2077K
 AR 63K
 SLC HEAVY FIRE POWER 444M
 DVE DAVIDSON PLD BETTY 36K

AR PARAMOUNT 2R
 VV TEQUILA 64T
 VV REDNECK GIRL 71R

P/E MAY 4 TO JULY 25, 2013 TO V V YOU JEST 11Y ET,
 V V YOUR JOKING RIGHT 35Y ET, BLB PLD REVOLVER 12Z

Here is a dark red broody female that has come into her own as a good producing young cow. She exemplifies calving ease on the sire's side of her pedigree and powerful performance on the dam's side with the likes of Paramount and Heavy Fire Power included. A son sold to Clayridge Farms Inc for \$3100.

BW 82
 WW 627
 YW 971

BULL • PERCENTAGE 75 • RED • POLLED

VV Adeom 123A

149140 • VV123A • 03/06/2013 • BW: 96
 SIRE: VV X MAN 182X

95A

FEMALE • PUREBRED 94 • RED • POLLED

SA Birch's Jan 81W

CDGV132064 • SA81W • 02/09/2009

CE	BW	WW	YW	MK	TM	CED	YG	CW	REA	MB	FT
5	0.8	68	83	28	61	8	-0.29	19	0.32	-0.28	-0.09

SLC LATIGO 118L
 TVR SPIDERMAN 1S
 FUN BLANCE 673P

RTC ATLAS 712G
 DJD VALLEY POLLED CLOUD 60X
 RTC ATLAS 712G
 KHR 673F
 DVE DAVIDSON POLLED ACE 52C
 ATC GOLD STAR 179A
 ATC GOLD STAR 49C
 ATC GOLD STAR 44B

ATC GOLD STAR FESTUS 147F
 LTC RIDGE STAR JAN 149J
 LTC RIDGE STAR PLD FRAN 89F

P/E MAY 4 TO JULY 25, 2013 TO SLC TOUCHDOWN 82W,
 STON STATESMAN 9Y, V V Z-LONG NECK BOTTLE 109Z

SA 81W was purchased from Twin Bridge Farms and has not disappointed; raising good stout calves with lots of growth.

BW 88
 WW 595
 YW 891

FEMALE • PUREBRED 94 • RED • POLLED

VV What A Gem 78W

CDGV131046 • VV78W • 02/10/2009

CE	BW	WW	YW	MK	TM	CED	YG	CW	REA	MB	FT
6	2.8	63	90	26	58	14	-0.22	27	0.36	-0.25	-0.07

EGL PABST L011 ET
 VV TIZIANO 151T
 GCC PLD RIBBON 204K

JCGR BAR GT PARADIGM 2H ET
 EGL PHOEBE G374
 VDG VAN DEAU BLUE SUEDE SHOE
 GCC PLD RIBBON 41G
 SLC FREEDOM 178F ET
 SLC STARR'S LABAMBA 3L
 SLC FREEDOM 178F ET
 MCCI 806H

SBR FREEDOM NESTOR N19
 CVF CRESTVIEW SUPERJEWEL 84S
 MCCI 806M

P/E MAY 4 TO JULY 25, 2013 TO SLC TOUCHDOWN 82W,
 STON STATESMAN 9Y, V V Z-LONG NECK BOTTLE 109Z

V V 78W is a very complete female with breed leading genetics on both sides of her pedigree. She has the performance numbers to work well for years to come. A son sold to Kevin Gerwatski this past spring.

BW 90
 WW 538
 YW 842

FEMALE • PUREBRED • RED • POLLED

VV Angela 48A

149142 • VV48A • 02/16/2013 • BW: 86
 SIRE: STON STATESMAN 9Y

96A

FEMALE • PUREBRED 88 • RED • POLLED

VV Wave The Ribbon 83W ET

CDGV131050 • VV83W • 02/12/2009

CE	BW	WW	YW	MK	TM	CED	YG	CW	REA	MB	FT
6	0.2	54	71	29	55	10	-0.28	12	0.28	-0.25	-0.08

SPG PLD SUNNY PLAIN HERO
 SPG SUNNY PLAIN TOPPER 702T
 SPG SUNNY PLAIN JOYCE 127R

BTI RED ALERT 2077K
 SPG PLD SUNNY PLAIN NIXIE 18
 SLC TOP SHELF 2N
 DKM CHARMAC MS. JOYCE 42J
 BTI ELVIS 2155E
 WGG EVENING TWILIGHT 212E
 LEF POLLED WHAMMOO 14E
 GCC RIBBON 5C

VDG VAN DEAU BLUE SUEDE SHOE
 GCC PLD RIBBON 204K
 GCC PLD RIBBON 41G

P/E JUNE 7 TO AUGUST 6, 2013 TO SLC TOUCHDOWN 84W
 V V XCALIBRE 101X

V V 83W is a full sister to lot 84; both capitalizing on their sire's depth and thickness as well as the outstanding maternal trails of their dam.

BW 94
 WW 513
 YW 742

FEMALE • PUREBRED 88 • RED • POLLED

AWB Birch's Disco 92W

CDGV132036 • AWB92W • 02/11/2009

CE	BW	WW	YW	MK	TM	CED	YG	CW	REA	MB	FT
12	1.0	53	75	34	60	11	-0.30	16	0.44	-0.32	-0.08

DEG PESO 286P
 VV TIREE 150T
 DTJ FANCY NANCY 506N

ARN SIR ARNOLD B921
 AWB BIRCH'S DISCO 2R
 AWB BIRCH'S LADY DISCO 5N

P/E MAY 4 TO JULY 25, 2013 TO VV11Y, VV 35Y, BLB 12Z,
 SLC 82W, STON 9Y AND VV 109Z

AWB 92W was purchased from the Birch's; her sire being one of the top selling bulls in V & V's Annual Bull Sale. Her dam has the calving ease of her sire – Sir Arnold.

99

BW 82
 WW 477
 YW



LOT 100 VV WANDA 94W



LOT 102 RJD 37'S WHITNEY 122W

FEMALE • PUREBRED 94 • RED • POLLED

VV Wanda 94W

CDGV131059 • VV94W • 02/14/2009

CE	BW	WW	YW	MK	TM	CED	YG	CW	REA	MB	FT
10	-1.4	53	58	33	60	8	-0.32	1	0.38	-0.20	-0.07

DL JEN-TY RAMBO 205P
 VCR SIX PACK 25S
 VV LOIS 21L

ULL LIMITED EDITION 16P
 VV PARKLAND 113S
 SLC PARKLAND 82P

P/E MAY 4 TO JULY 25, 2013 TO V V YOU JEST 11Y ET,
 V V YOUR JOKING RIGHT 35Y ET, BLB PLD REVOLVER 12Z

V V 94W is a hard working four-year-old sired by VCR 25S and out of the V V 113S dam. Her sister sells as lot 83. This cow family has worked very well at V & V.

MMM CALBERTA RESOURCE 8307H
 DL JEN-TY GOLD CHARMER 40H
 ATC GOLD STAR HUSTON 214H
 DAT CIRCLE T HELOISE 828H
 JRI PD RESOURCE 197E51
 DEG BURNING EMBER 272J ET
 NGAC REMITALL PLD EXCEL 232E
 SLC COPPER PARKLAND 139G

100

BW 78
 WW 587
 YW 808

BULL • PUREBRED • RED • POLLED

VV Allan Alda 92A

149152 • VV92A • 02/23/2013 • BW: 82
 SIRE: FRL FIR RIVER SONAR 36S ET

100A

FEMALE • PUREBRED 94 • RED • POLLED

VV Wish Upon A Star 117W

CDGV131159 • VV117W • 02/17/2009

CE	BW	WW	YW	MK	TM	CED	YG	CW	REA	MB	FT
4	3.1	69	86	26	61	6	-0.18	24	0.30	-0.25	-0.06

BTI RED ALERT 2077K
 AR PARAMOUNT 2R
 AR 63K

NGAC REMITALL PLD EXCEL 232E
 SLC PARKLAND 82P
 SLC COPPER PARKLAND 139G

P/E MAY 4 TO JULY 25, 2013 TO VV11Y, VV 35Y, BLB 12Z,
 SLC 82W, STON 9Y AND VV 109Z

V V 117W is out of a Severtson bred female and she is the grandam of lots 83 and 100. The Paramount sire added loads of thickness and depth into his calves. Her 2012 heifer calf was the top selling female at this spring's sale to Fir River Livestock for \$3,800.

SLC FREEDOM 178F ET
 BTI LADY GRANITE 2001E ET
 SLC EMPIRE 41E
 AR LAA'S 17G
 VAA LEACHMAN NEW DAY 205B
 BJL CHAUTAUGUA GIRL 927Y
 XZR XZ COPPER 301C
 SLC PARKLAND 202D

BW 94
 WW 581
 YW 890

FEMALE • PUREBRED 94 • RED • POLLED

RJD 37's Whitney 122W

CDGV132438 • RJD122W • 03/05/2009

CE	BW	WW	YW	MK	TM	CED	YG	CW	REA	MB	FT
9	0.4	55	70	35	62	7	-0.17	12	0.09	-0.35	-0.06

SLC MERV 12N
 SLC MERV 49S
 SLC 247P

DVE DAVIDSON PLD DUC 137M
 RJD 81F'S SAPHO 37S
 SLC MISS 61Y NIGHT ET 81F

P/E MAY 4 TO JULY 25, 2013 TO V V YOU JEST 11Y ET,
 V V YOUR JOKING RIGHT 35Y ET, BLB PLD REVOLVER 12Z

RJD 122W was purchased as part of the high selling pair at Ralph Domm's Dispersal. This female has not disappointed the Pancoasts. Her sire is the son of the former Champion SLC Merv 12N.

SLC FREEDOM 178F ET
 SLC HICKORY GOAL 272K
 VG VALLEY BLACKJACK JR 37H
 SLC LONNIE 56L
 DVE DAVIDSON FAMOUS 58K
 DVE DAVIDSON VALENTINE 40J
 BEA POLLED MIDNIGHT 782W
 BB MISS 61Y

102

BW 85
 WW 699
 YW 985

FEMALE • PUREBRED 94 • RED • POLLED

VV Wacky Pamela 131W

CDGV131088 • VV131W • 02/20/2009

CE	BW	WW	YW	MK	TM	CED	YG	CW	REA	MB	FT
11	0.8	57	74	30	59	9	-0.29	15	0.46	-0.21	-0.07

EGL PABST L011 ET
 SBR PABST SIERRA R38
 SLC SARAH 056L

MGF FREEDOM FIGHTER 12K
 VV PAMELA 65P
 VV LUCIOUS 4L

JCGR BAR GT PARADIGM 2H ET
 EGL PHOEBE G374
 SLC FREEDOM 178F ET
 SFL SLC SARAH 237H
 SLC FREEDOM 178F ET
 MGF TREND'S SHARON 117H
 GKT BOO BOO 155E
 ATC GOLD STAR PLD JUSTINE 6J

P/E MAY 4 TO JULY 25, 2013 TO SLC TOUCHDOWN 82W,
 STON STATESMAN 9Y, V V Z-LONG NECK BOTTLE 109Z

BW 90
 WW 520
 YW 867

V V 131W is sired by the high selling bull SBR R38; a dark red bull with lots of hair, volume and thickness. Her dam has always worked well at V & V. There is loads of potential in this young cow.

FEMALE • PUREBRED 94 • RED • POLLED

VV Wish Upon A Star 136W

CDGV131089 • VV136W • 02/21/2009

CE	BW	WW	YW	MK	TM	CED	YG	CW	REA	MB	FT
10	-1.2	51	73	32	57	9	-0.28	12	0.31	-0.28	-0.08

SPG PLD SUNNY PLAIN HERO
 SPG SUNNY PLAIN TOPPER 702T
 SPG SUNNY PLAIN JOYCE 127R

BTI RED ALERT 2077K
 SPG PLD SUNNY PLAIN NIXIE 18
 SLC TOP SHELF 2N
 DKM CHARMAC MS. JOYCE 42J
 SLC FREEDOM 178F ET
 JRI PLD JACQUELINE 227C51
 TSSC TWIN STAR 464H
 KFW TWIN STAR MISS GOLD 181G

TSSC TWIN STAR MATRIX 227M ET
 TSSC TWIN STAR RACHEL 303R
 TSSC TWIN STAR LOCKET 381L

P/E MAY 4 TO JULY 25, 2013 TO V V YOU JEST 11Y ET,
 V V YOUR JOKING RIGHT 35Y ET, BLB PLD REVOLVER 12Z

BW 72
 WW 503
 YW 837

V V 136W's dam has never disappointed since she was purchased at the Twin Star Dispersal; always a big, stout, dark red calf. Her sire, Topper, stamped them all the same - lots of meat, depth and thickness.

BULL • PUREBRED • RED • POLLED

VV Alistair 29A

149081 • VV92A • 02/11/2013 • BW: 88
 SIRE: V V X-RATED 88X ET

105A

FEMALE • PUREBRED 94 • RED • POLLED

VV Waht's Her Name 137W

CDGV131154 • VV137W • 02/21/2009

CE	BW	WW	YW	MK	TM	CED	YG	CW	REA	MB	FT
9	1.1	58	80	42	71	7	-0.26	19	0.35	-0.29	-0.08

DEG MONAHAN 293M
 DEG PESO 286P
 DEG JYSSICA 286J

JHL LCHMN Z138 8005D
 RCG DEG KARIN 293K
 DBC MR MODERATOR 9F
 DEG DAFFODIL 96D
 VCR SUPER STAR 14K
 GRW MS SASSY CADILLAC 901J
 MGF GUZZY'S BIG GULP 1H ET
 BKS POLLED DOVE 16F

DTJ SUPER STAR CADDY 144M
 DTJ SWEET CHERRY PIE S72
 BKS POLLED CHERRY 86K

P/E MAY 4 TO JULY 25, 2013 TO VV11Y, VV 35Y, BLB 12Z,
 SLC 82W, STON 9Y AND VV 109Z

BW 74
 WW 570
 YW 874

V V 137W is a direct daughter of DEG Peso, the high selling bull when V & V purchased him from Double Eagle. Peso went on to sire some of the most desirable bulls and females in the Gelbvieh breed. This girl is no exception.

FEMALE • PERCENTAGE 50 • RED • POLLED

VV Wicked Witch 133W

CDGV131721 • VV133W • 02/20/2009

CE	BW	WW	YW	MK	TM	CED	YG	CW	REA	MB	FT
8	1.3	57	66	21	50	4	-0.24	10	0.37	-0.09	-0.05

EGL PABST L011 ET
 SBR PABST SIERRA R38
 SLC SARAH 056L

JCGR BAR GT PARADIGM 2H ET
 EGL PHOEBE G374
 SLC FREEDOM 178F ET
 SFL SLC SARAH 237H

P/E JUNE 7 TO AUGUST 6, 2013 TO SLC TOUCHDOWN 84W,
 V V XCALIBRE 101X

BW 80
 WW 589
 YW 847



LOT 104 VV WICKED WITCH 133W

FEMALE • PUREBRED 94 • RED • POLLED

VV Wynne 141W

CDGV131093 • VV141W • 02/22/2009

CE	BW	WW	YW	MK	TM	CED	YG	CW	REA	MB	FT
5	3.0	65	93	30	63	9	-0.17	29	0.28	-0.27	-0.07

SPG PLD SUNNY PLAIN HERO
 SPG SUNNY PLAIN TOPPER 702T
 SPG SUNNY PLAIN JOYCE 127R

BTI RED ALERT 2077K
 SPG PLD SUNNY PLAIN NIXIE 18
 SLC TOP SHELF 2N
 DKM CHARMAC MS. JOYCE 42J
 VAA LEACHMAN NEW DAY 205B
 BJL CHAUTAUQUA GIRL 927Y
 DTJ HEAVY FIRE POWER ET 41H
 SLC REBELLO 191F

NGAC REMITALL PLD EXCEL 232E
 SLC REBELLO 14P
 SLC REBELLO 184K

P/E MAY 4 TO JULY 25, 2013 TO SLC TOUCHDOWN 82W,
 STON STATESMAN 9Y, V V Z-LONG NECK BOTTLE 109Z

BW 92
 WW 534
 YW 868

V V 141W, a Topper daughter, is out of one of the greatest cow families at V & V Farms - SLC Rebello 14P. She was the dam of the great herd sire sold to Twin Bridge Farms in 2012 for \$8,000.

FEMALE • PUREBRED • BLACK • POLLED

VV Amaryllis 72A

149084 • VV72A • 02/19/2013 • BW: 80
 SIRE: V V X-RATED 88X ET

107A



LOT 110 VV WHAT A TRIP 195W ET

FEMALE • PUREBRED 94 • RED • SCURS

VV Waterbum 163W

CDGV131110 • VV163W • 02/25/2009

CE	BW	WW	YW	MK	TM	CED	YG	CW	REA	MB	FT
9	0.0	61	76	22	52	8	-0.31	14	0.46	-0.31	-0.07

SPG PLD SUNNY PLAIN HERO
 SPG SUNNY PLAIN TOPPER 702T
 SPG SUNNY PLAIN JOYCE 127R

JCGR BAR GT LOUIE 2J
 VV SUPERBUM 19S
 PAN PANDA KISMET 172K

P/E MAY 4 TO JULY 25, 2013 TO SLC TOUCHDOWN 82W,
 STON STATESMAN 9Y, V V Z-LONG NECK BOTTLE 109Z

When you breed Topper to the maternal combination of Louie and Freedom results are sure to be satisfactory. V V 163W has met all her expectations and has proven to be a very good young cow

108

BW 72
 WW 543
 YW 860

FEMALE • PUREBRED 94 • RED • POLLED

VV Will You Pamper Me 174W

CDGV131119 • VV174W • 02/28/2009

CE	BW	WW	YW	MK	TM	CED	YG	CW	REA	MB	FT
7	1.2	53	65	26	53	10	-0.32	10	0.46	-0.31	-0.07

SPG PLD SUNNY PLAIN HERO
 SPG SUNNY PLAIN TOPPER 702T
 SPG SUNNY PLAIN JOYCE 127R

JCGR BAR GT LOUIE 2J
 VV PANDI LOU 19R
 PAN PANDA KISMET 172K

P/E MAY 4 TO JULY 25, 2013 TO SLC TOUCHDOWN 82W,
 STON STATESMAN 9Y, V V Z-LONG NECK BOTTLE 109Z

The dams of lots 108 and 109 are full sisters and they are sired the same way - by Topper. Check out the consistency and the genetic potential in these closely related females.

109

BW 84
 WW 487
 YW 738

FEMALE • PUREBRED 94 • RED • POLLED

VV What A Trip 195W ET

CDGV131135 • VV195W • 03/05/2009

CE	BW	WW	YW	MK	TM	CED	YG	CW	REA	MB	FT
7	0.3	45	55	32	55	11	-0.28	3	0.27	-0.31	-0.07

HHF W21 POLLED PATRIOT
 FRL FIR RIVER SONAR 36S ET
 SFL SLC MS CENTENNIAL 188C

VV BOODOM 5M
 VV TRIX 131R
 WGG MADEMOISELLE TRIX 68M

P/E MAY 4 TO JULY 25, 2013 TO VV11Y, VV 35Y, BLB 12Z,
 SLC 82W, STON 9Y AND VV 109Z

If you are looking for a super broody cow with longevity bred into her pedigree V V 195W ET has it all. Her dam 131R, lot 172, is represented throughout the catalogue with a number of daughters selling. This female is sired by FRL 36S right out of the ET program. You will witness why this planned mating was so successful.

110

BW 66
 WW 478
 YW 891

FEMALE • PUREBRED 94 • RED • POLLED

VV Witchcraft 202W

CDGV131142 • VV202W • 03/10/2009

CE	BW	WW	YW	MK	TM	CED	YG	CW	REA	MB	FT
3	2.9	51	53	26	52	8	-0.24	5	0.13	-0.28	-0.07

BTI RED ALERT 2077K
 DF PROFIT 5P
 AR JULIE 14J

DTJ FIRE POWER JAKE 16J ET
 WGG MADEMOISELLE TRIX 68M
 WGG KICKAPOO LADY 13K

P/E MAY 4 TO JULY 25, 2013 TO VV11Y, VV 35Y, BLB 12Z,
 SLC 82W, STON 9Y AND VV 109Z

V V 202W is a direct daughter of the \$12,000 DF Profit 5P and out of an equally high quality dam who's progeny were popular among Gelbvieh breeders.

111

BW 92
 WW 471
 YW 802



LOT 112 LCR WANDA 904W

FEMALE • PUREBRED 94 • RED • POLLED

LCR Wanda 904W

CDGV134568 • LCR904W • 07/17/2009

CE	BW	WW	YW	MK	TM	CED	YG	CW	REA	MB	FT
9	-2.5	50	52	41	66	6	-0.31	-4	0.15	-0.23	-0.08

JCGR BAR GT ICON 1115F
 TJB ABSOLUTE 211L - ET
 SLC ANITA 19F ET

CCF GREAT LAKES CHISHOLM 30L
 LCR RACHEAL 104R
 LCD GYPSY 177G

P/E MAY 4 TO JULY 25, 2013 TO V V YOU JEST 11Y ET,
 V V YOUR JOKING RIGHT 35Y ET, BLB PLD REVOLVER 12Z

HHF W21 POLLED PATRIOT
 JCGR 518B ET
 HHF POLLED SUMMIT 648U
 BB MISS 61Y
 VDG VAN DEAU BLUE SUEDE SHOE
 CCF GREAT LAKES BLYTH LASS
 KFW LONE STAR ACTION 605B
 CVG CYPRESSVIEW YVONNE 17Y

BW 65
WW 627
YW 987



FEMALE • PERCENTAGE 75 • GOLD • POLLED

LCR Wanita 919W

CDGV134584 • LCR919W • 04/04/2009

CE	BW	WW	YW	MK	TM	CED	YG	CW	REA	MB	FT
5	2.4	62	77	22	53	0	-0.21	18	0.20	-0.21	-0.08

WTM TWIN STAR PROSPER 51P
 LCR STAR PROSPECT 155S
 LCD NICOLE 155N

SLC FREEDOM 178F ET
 TPG POLLED FLAXEN 51F
 VCR VALE COUNTRY PLD LAD 9L
 LCD HOLIDAY 154H
 VCR PLD VALE SMOKER 12F
 LCD GYPSY 177G

P/E MAY 4 TO JULY 25, 2013 TO V V YOU JEST 11Y ET,
 V V YOUR JOKING RIGHT 35Y ET, BLB PLD REVOLVER 12Z

BW 95
WW 874
YW 1010



FEMALE • PERCENTAGE 75 • RED • POLLED

LCR Wynn 932W

CDGV134567 • LCR932W • 08/12/2009

CE	BW	WW	YW	MK	TM	CED	YG	CW	REA	MB	FT
3	3.4	65	88	22	54	-1	-0.19	27	0.24	-0.21	-0.08

WTM TWIN STAR PROSPER 51P
 LCR STAR PROSPECT 155S
 LCD NICOLE 155N

LCD KURT 121K
 LCR NAOMI 32N

SLC FREEDOM 178F ET
 TPG POLLED FLAXEN 51F
 VCR VALE COUNTRY PLD LAD 9L
 LCD HOLIDAY 154H
 TSCC TWIN STAR HERITAGE 227H
 LCD DONNA 121B

P/E MAY 4 TO JULY 25, 2013 TO SLC TOUCHDOWN 82W,
 STON STATESMAN 9Y, V V Z-LONG NECK BOTTLE 109Z
 A son sold to the Zenters.

BW 100
WW 319
YW



FEMALE • PERCENTAGE 75 • RED • POLLED

LCR Wynona 937W

CDGV134587 • LCR937W • 04/03/2009

CE	BW	WW	YW	MK	TM	CED	YG	CW	REA	MB	FT
3	3.3	65	81	26	58	-1	-0.21	22	0.24	-0.21	-0.08

WTM TWIN STAR PROSPER 51P
 LCR STAR PROSPECT 155S
 LCD NICOLE 155N

LCD KURT 121K
 LCR PAGE 37P

SLC FREEDOM 178F ET
 TPG POLLED FLAXEN 51F
 VCR VALE COUNTRY PLD LAD 9L
 LCD HOLIDAY 154H
 TSCC TWIN STAR HERITAGE 227H
 LCD DONNA 121B

P/E JUNE 7 TO AUGUST 6, 2013 TO SLC TOUCHDOWN 84W,
 V V XCALIBRE 101X

BW 100
WW 886
YW 1023



FEMALE • PUREBRED • RED • POLLED

VV Anatholia 55A

149042 • VV55A • 02/17/2013 • BW: 86
 SIRE: FRL FIR RIVER RANALDO 38U



FEMALE • PUREBRED • RED • POLLED

VV Anabella 205A

149043 • VV205A • 03/16/2013 • BW: 80
 SIRE: SLC TOUCHDOWN 138X





FEMALE • PUREBRED 94 • RED • POLLED

VV Singin' In The Raine 1U

117

CDGV126904 • VV1U • 01/18/2008

CE	BW	WW	YW	MK	TM	CED	YG	CW	REA	MB	FT
8	2.0	70	88	20	55	5	-0.30	24	0.54	-0.34	-0.08

JCGR BAR GT LOUIE 2J
 VV RALLY LOU 16R
 LTC RIDGE STAR PLD KELLY 59K

JCGR BAR GT SHREK 604L ET
 JAB RAINE 52R
 SLC MISS HORIZON 94N

P/E JUNE 7 TO AUGUST 6, 2013 TO SLC TOUCHDOWN 84W
 V V XCALIBRE 101X

What an awesome cow just reaching her prime. She looks like a brood cow and she is. Her sire is the \$16,000 V V Rally Lou and her dam was purchased from Jeremiah Barnert. The picture speaks volumes and you can help record her history.

BW 82
 WW 498
 YW 888

FEMALE • PUREBRED • RED • POLLED

VV Averil 175A

117A

149113 • VV175A • 03/25/2013 • BW: 85
 SIRE: V V XTREME RELAY 62X ET

FEMALE • PUREBRED 94 • RED • POLLED

VV Lady In Red 8U ET

119

CDGV126908 • VV8U • 01/20/2008

CE	BW	WW	YW	MK	TM	CED	YG	CW	REA	MB	FT
5	1.1	50	60	37	62	7	-0.27	7	0.39	-0.28	-0.06

JEB POLLED GIZMO 17Z
 SPUR BERETTA 703G
 SPUR VANESSA 19E ET

AR COLE 26M
 SLC LADY IN RED 33P
 AR RED LADY 38H

P/E MAY 4 TO JULY 25, 2013 TO SLC TOUCHDOWN 82W,
 STON STATESMAN 9Y, V V Z-LONG NECK BOTTLE 109Z

V V 8U is a stylish, structurally correct daughter of the great SLC 33P female that was a member of V & V's embryo transplant team. The 33P calves have been very well received at previous V & V sales. There are a number of her ET calves selling.

BW 80
 WW 443
 YW 804

FEMALE • PUREBRED • RED • POLLED

VV Angelina 50A

119A

149150 • VV50A • 02/16/2013 • BW: 70
 SIRE: SLC TOUCHDOWN 84W

LOT 117 VV SINGIN' IN THE RAINE 1U

FEMALE • PUREBRED 94 • RED • POLLED

CVF Crest View Upick Me 3U

118

CDGV130198 • CVF3U • 01/18/2008

CE	BW	WW	YW	MK	TM	CED	YG	CW	REA	MB	FT
4	2.3	84	115	22	64	8	-0.16	41	0.34	-0.25	-0.08

VCR MR PLD VALE COUNTRY 11J
 CVF CREST VIEW MR ROCK 79R
 MCCI 806M

TJB JAGERMEISTER 229M - ET
 SBR MISS RED RIBBON R4
 GCC PLD RED RIBBON 137L

P/E MAY 4 TO JULY 25, 2013 TO V V YOU JUST 11Y ET,
 V V YOUR JOKING RIGHT 35Y ET, BLB PLD REVOLVER 12Z

CVF 3U is a dark cherry red, thick made female that will be appreciated on sale day. Her dam is part of the great Ribbon family from the Milnes.

TLR COCOA 35C
 MAC MS VALHALLA 3558C
 SLC FREEDOM 178F ET
 MCCI 806H
 BTI RED ALERT 2077K
 59D5 JASMINE 177G ET
 VDG VAN DEAU BLUE SUEDE SHOE
 GCC PLD RIBBON 41G

BW 79
 WW 678
 YW 1051

FEMALE • BALANCER 50 • RED • POLLED

VV Uplifting Gerrisa 17U

120

CDGV126917 • VV17U • 01/21/2008

CE	BW	WW	YW	MK	TM	CED	YG	CW	REA	MB	FT
11	-1.5	62	87	21	52	4	-0.12	19	0.28	0.16	-0.03

IMP RED BFCK CHEROKEE CNYN 4912
 SGFC RED SODER CANYON 126M
 SGFC RED SODER MS ZEUS 0217K

DVE DAVIDSON PAYDAY 30M
 KCB PINTO CREEK PLUSH 121P
 CVG CYPRESS VIEW GERRISA 29G

P/E JUNE 7 TO AUGUST 6, 2013 TO SLC TOUCHDOWN 84W
 V V XCALIBRE 101X

FEMALE • PERCENTAGE 75 • RED • POLLED

VV Avis 178A

120A

149106 • VV78A • 04/02/2013 • BW: 84
 SIRE: V V XCALIBRE 101X

IMP RED BUF CRK CHF 824-1658
 RED MRM 1431 8611 9109
 SGFC RED SODERGLN ZEUS 6042F
 SGFC RED SODERGLN FRYJA 5107E
 HAG DUKE 288K
 BKS POLLED MYSTIC 80K
 ATC GOLD STAR 60C
 CVG CYPRESS VIEW TANYCE 7X

BW 80
 WW 443
 YW 804

FEMALE • PUREBRED 94 • GOLD • POLLED

KCC Ms Erhart 35U

CDGV130161 • KCC35U • 01/19/2008

CE	BW	WW	YW	MK	TM	CED	YG	CW	REA	MB	FT
0	4.5	57	70	31	60	0	-0.25	17	0.21	-0.20	-0.09

ATC GOLD STAR HERITAGE 129H
 OAR MO-ROC PAYDAY 110P
 OAR MO-ROC 25K
 OAR MO-ROC KERT 30K ET
 KCC KERINESS ERHART LADY 68P
 KCC KERINESS MISS ERHART 37J
 ATC GOLD STAR 189F
 ATC GOLD STAR 8X
 OAR MO-ROC GALAHAD 84G
 OAR MO-ROC 91E
 HHF POLLED SUMMIT 648U
 OAR MO-ROC-GELB 21Z
 BTI ERHART 2217E
 KCC KERINESS LADY JAG 71F

P/E JUNE 7 TO AUGUST 6, 2013 TO SLC TOUCHDOWN 84W
 V V XCALIBRE 101X

KCC 35U is a powerful, broody, good looking female that was purchased from Keriness Cattle Co. She has performance and style to grab your attention.

121

BW 93
 WW 604
 YW 919

FEMALE • PUREBRED 94 • RED • POLLED

VV Untitled Star 41U

CDGV126940 • VV41U • 01/25/2008

CE	BW	WW	YW	MK	TM	CED	YG	CW	REA	MB	FT
12	-0.7	56	78	28	56	9	-0.24	15	0.33	-0.11	-0.07

SLC FREEDOM 178F ET
 JRI HEAVY EQUIPMENT 125M3
 JRI MS PLD GRAND PRIX 125G3
 GKT BOO BOO 155E
 ATC GOLD STAR KOO KOO 32K
 ATC GOLD STAR PLD GWEN 327C
 VAA LEACHMAN NEW DAY 205B
 BB MISS 61Y
 JRI PLD GRAND PRIX ET
 JRI MS PLD SUMMIT 125D3
 FHG FLYING H CADILLAC 184C
 CCD X55
 ATC GOLD STAR POLLED 5D
 ATC GOLD STAR 48Y

P/E MAY 4 TO JULY 25, 2013 TO V V YOU JEST 11Y ET,
 V V YOUR JOKING RIGHT 35Y ET, BLB PLD REVOLVER 12Z

V V 41U is out of the high selling heifer at Albert Carlson's Dispersal Sale, ATC 32K. Her pedigree will pop up in many of the top females at V & V Farms. Heavy Equipment is a bonus. W L Farms purchased a grandson this spring for \$4,400.

122

BW 72
 WW 449
 YW 801

FEMALE • PUREBRED 94 • RED • POLLED

VV Unpriced Nellie 54U

CDGV126952 • VV54U • 01/26/2008

CE	BW	WW	YW	MK	TM	CED	YG	CW	REA	MB	FT
6	-0.3	54	68	25	52	9	-0.26	9	0.26	-0.22	-0.07

CZM FAIRYVALE XCELERATOR 1X
 ATC GOLD STAR POLLED 5D
 ATC GOLD STAR ET 92A
 SLC FREEDOM 178F ET
 VV NELLIE 4N
 DAT CIRCLE T JULIETTE 914J
 VSD GOLD DUST HI HOPE
 CZM FAIRYVALE HOLLY
 ATC GOLD STAR 4W
 RLR EMMA 100G
 VAA LEACHMAN NEW DAY 205B
 BB MISS 61Y
 ATC GOLD STAR 33G
 DAT CIRCLE T FELECIA 626F

P/E MAY 4 TO JULY 25, 2013 TO V V YOU JEST 11Y ET,
 V V YOUR JOKING RIGHT 35Y ET, BLB PLD REVOLVER 12Z

It is "5D" daughters like V V 54U that have been the cornerstone of the V & V breeding program. Her dam, V V 4N, has left her mark throughout the years.

123

BW 90
 WW 489
 YW 878

FEMALE • PERCENTAGE 75 • RED • POLLED

CCC Miss Ullstar 57U

CDGV128650 • CCC57U • 04/12/2008

CE	BW	WW	YW	MK	TM	CED	YG	CW	REA	MB	FT
6	1.5	58	77	35	64	5	-0.26	17	0.31	-0.24	-0.08

SLC FREEWAY 214L
 JPH PERICLES 46P
 SVF CLASSIC MADISON 6M
 GFA BERGEN EDISON 521E
 CCCC KITTY 57K
 SLC FREEDOM 178F ET
 SLC 218F
 NGAC REMITALL JEOPARDY 142J
 SVF CLASSIC KELSEY 4K
 KCF BENNETT HORIZON 103X
 GFA BERGEN CRYSTAL 323C

P/E MAY 4 TO JULY 25, 2013 TO SLC TOUCHDOWN 82W,
 STON STATESMAN 9Y, V V Z-LONG NECK BOTTLE 109Z

BW 75
 WW 602
 YW

FEMALE • PERCENTAGE 75 • RED • POLLED

VV U'r Jestng Morena 77U

CDGV126968 • VV77U • 01/28/2008

CE	BW	WW	YW	MK	TM	CED	YG	CW	REA	MB	FT
6	3.7	58	80	29	58	8	-0.17	23	0.19	-0.29	-0.07

VV BOODOM 5M
 VV RENASANCE JESTER 79R
 LTC RIDGE STAR PLD JEST 280J
 SLC FREEDOM 178F ET
 FUN FREE MORENA 51M
 SLC FREEDOM 178F ET
 JBM ALVA 23K
 ATC GOLD STAR POLLED 5D
 LTC RIDGE STAR 67F
 VAA LEACHMAN NEW DAY 205B
 BB MISS 61Y

P/E MAY 4 TO JULY 25, 2013 TO SLC TOUCHDOWN 82W,
 STON STATESMAN 9Y, V V Z-LONG NECK BOTTLE 109Z

125

BW 102
 WW 371
 YW 713

FEMALE • PUREBRED 88 • RED • POLLED

VV Untold Story 118U

CDGV127008 • VV118U • 02/12/2008

CE	BW	WW	YW	MK	TM	CED	YG	CW	REA	MB	FT
6	1.9	56	76	34	62	8	-0.23	18	0.21	-0.29	-0.08

BTI 2085L
 SBR 2085L BTI SONNY N27
 DTJ LORI CHILAKO 26L
 WGG FLASHPOINT 91F
 LC WANDERING HALLEY 451H
 SBG SKY BLUE CHAR 35D
 BTI GENERAL 2207G
 BTI CATERINA B 2090F
 SLC FREEDOM 178F ET
 ELW MISS CHILAKO 103E
 WGG WINDY PERFECTO 112B
 ARO MS RED EDGE Z049P
 LEF SAGE 18X

P/E MAY 4 TO JULY 25, 2013 TO SLC TOUCHDOWN 82W,
 STON STATESMAN 9Y, V V Z-LONG NECK BOTTLE 109Z

BW 84
 WW 490
 YW 885

FEMALE • PUREBRED • RED • POLLED

VV Amalinda 70A

149141 • VV70A • 02/18/2013 • BW: 82
 SIRE: SLC TOUCHDOWN 84W

125A

FEMALE • PUREBRED • RED • POLLED

VV Another Love 8A

149069 • VV8A • 02/03/2013 • BW: 84
 SIRE: V V WATER LOU 61W ET

126A

FEMALE • PUREBRED 94 • RED • POLLED

VV Unlimited Sugar 125U

CDGV127015 • VV125U • 02/14/2008

CE	BW	WW	YW	MK	TM	CED	YG	CW	REA	MB	FT
9	-0.1	55	62	38	66	11	-0.32	6	0.33	-0.19	-0.08

JRI PD RESOURCE 197E51
 ULL LIMITED EDITION 16P
 DEG BURNING EMBER 272J ET

GCC REDNECK 2F
 GCC RED SUGAR 59K
 DVE DAVIDSON MISS SUGAR 50H

P/E MAY 4 TO JULY 25, 2013 TO V V YOU JEST 11Y ET,
 V V YOUR JOKING RIGHT 35Y ET, BLB PLD REVOLVER 12Z

V V 125U is a top female from the highly productive Red Sugar dam. They do not make a lot like Red Sugar and she was every bit the part. Limited Edition was a thick well balanced beef bull sired by Resource

127

BW 78
 WW 447
 YW 837

BULL • PUREBRED • BLACK • POLLED

VV Algernon 49A

149073 • VV49A • 02/16/2013 • BW: 88
 SIRE: V V X-RATED 88X ET

127A



LOT 129 VV UP TO ME 181U

FEMALE • PERCENTAGE 75 • RED • POLLED

SLC Molly 204U

CDGV129138 • SLC204U • 03/19/2008

CE	BW	WW	YW	MK	TM	CED	YG	CW	REA	MB	FT
8	2.2	63	86	32	63	5	-0.19	24	0.27	-0.13	-0.07

CES DECKA PRECISION 144P
 CES DECKA OUTBACK 75S
 CES DECKA HARPER 150L

BTI CHOTEAU 2135C
 SLC 226E

P/E JUNE 7 TO AUGUST 6, 2013 TO SLC TOUCHDOWN 84W
 V V XCALIBRE 101X

A son sold to Travis Ayers for \$3700

130

BW 92
 WW 804
 YW

CES DECKA QUEST 54M
 CES DECKA CRIMSON TIDE 31K
 WGG FLASHPOINT 91F
 CES DECKA HARPER 63H
 IRF POLL CHEYENNE 902Y
 FLK 101 LILLA 912Y

FEMALE • PERCENTAGE 75 • RED • POLLED

VV Unkissed 155U

CDGV127041 • VV155U • 02/26/2008

CE	BW	WW	YW	MK	TM	CED	YG	CW	REA	MB	FT
7	0.0	50	56	28	53	6	-0.28	2	0.24	-0.19	-0.07

BTI RED ALERT 2077K
 AR PARAMOUNT 2R
 AR 63K

ATC GOLD STAR HARVEY 315H
 VV NATALIE 96N

SLC FREEDOM 178F ET
 BTI LADY GRANITE 2001E ET
 SLC EMPIRE 41E
 AR LAA'S 17G
 ATC GOLD STAR 49C
 CWA MISS CWA 2Y

P/E MAY 4 TO JULY 25, 2013 TO SLC TOUCHDOWN 82W,
 STON STATESMAN 9Y, V V Z-LONG NECK BOTTLE 109Z

BW 76
 WW 402
 YW 781

FEMALE • PUREBRED • RED • POLLED

VV Aneka 23A

149092 • VV23A • 02/09/2013 • BW: 88
 SIRE: FRL FIR RIVER RANALDO 38U

128A

FEMALE • PUREBRED 94 • RED • POLLED

VV Up To Me 181U

CDGV127063 • VV181U • 03/21/2008

CE	BW	WW	YW	MK	TM	CED	YG	CW	REA	MB	FT
6	2.3	72	92	28	64	10	-0.19	27	0.32	-0.21	-0.07

DL JEN-TY RAMBO 205P
 VCR SIX PACK 25S
 VV LOIS 21L

EGL EL DORADO L058
 DTJ MISS ANITA 57P
 SLC 163E ET

P/E MAY 4 TO JULY 25, 2013 TO SLC TOUCHDOWN 82W,
 STON STATESMAN 9Y, V V Z-LONG NECK BOTTLE 109Z

V V 181U has lots of style, femininity and overall volume. Her dam, DTJ 57P is another top producer and sells as lot 176. Here is a cow family that has worked and will continue to get the job done.

BW 88
 WW 535
 YW 901

MMM CALBERTA RESOURCE 8307H
 DL JEN-TY GOLD CHARMER 40H
 ATC GOLD STAR HUSTON 214H
 DAT CIRCLE T HELOISE 828H
 EGL EXECUTIVE J159
 EGL J036 ET
 BTI BARCELONA 2057B
 BB MISS 61Y

FEMALE • PUREBRED • RED • POLLED

VV Amalia 65A

149107 • VV65A • 02/18/2013 • BW: 98
 SIRE: STON STATESMAN 9Y

129A

FEMALE • PUREBRED 88 • RED • POLLED

SPG Sunny Plain Brandy 811U

CDGV127793 • SPG811U • 01/21/2008

CE	BW	WW	YW	MK	TM	CED	YG	CW	REA	MB	FT
6	3.3	70	103	30	65	1	-0.18	36	0.43	-0.14	-0.06

JRI EXTRA EXPOSURE 285L71 ET
 JRI FULLY EXPOSED 270N83
 JRI MS LIFESAVER 270K73

ATC GOLD STAR HARD BODY 146H
 LANG GOLD STAR 52S
 LANG MS ARNOLD 17K

P/E MAY 4 TO JULY 25, 2013 TO SLC TOUCHDOWN 82W,
 STON STATESMAN 9Y, V V Z-LONG NECK BOTTLE 109Z

BW 88
 WW 752
 YW 968

FHG FLYING H EXTRA 150D
 JRI MS POLLED SWEETIE 285C6
 JBOB CAROLINA CPR
 JRI MS PLD JONI 270D63
 ATC GOLD STAR POLLED 5D
 ATC GOLD STAR 96E
 ARN SIR ARNOLD B921

FEMALE • PUREBRED • RED • POLLED

VV Avera 157A

149060 • VV157A • 03/24/2013 • BW: 88
 SIRE: FRL FIR RIVER RANALDO 38U

131A



FEMALE • PUREBRED 88 • RED • POLLED

LCR Umatilla 820U

CDGV130381 • LCR820U • 08/28/2008

CE	BW	WW	YW	MK	TM	CED	YG	CW	REA	MB	FT
6	0.4	58	80	15	44	7	-0.21	17	0.18	-0.30	-0.08

TJB JAGERMEISTER 229M - ET
 WJW DOUBLE U XZIBIT 517R
 NGAC REMITALL GILDA 228G

BTI RED ALERT 2077K
 59D5 JASMINE 177G ET
 KHR 05E
 NGAC REMITALL DEANNA 93D
 SLC FREEDOM 178F ET
 JRI MS PLD GRAND PRIX 125G3
 LCD KURT 121K

JRI PLD FREE AGENT 125J3
 LCD PRESLEY 20P
 LCD METILDA 22M

P/E MAY 4 TO JULY 25, 2013 TO V V YOU JEST 11Y ET,
 V V YOUR JOKING RIGHT 35Y ET, BLB PLD REVOLVER 12Z

LCR 820U is a very complete, dark red female bred in the Ray Davissou herd. You will certainly appreciate her female.

BW 88
 WW 591
 YW

BULL • PUREBRED • RED • POLLED

VV Doa 87A

149210 • VV87A • 02/22/2013 • BW: 82
 SIRE: PENDING DNA VERIFICATION (WILL BE AVAILABLE SALE DAY)

132A

FEMALE • PERCENTAGE 75 • GOLD • POLLED

LCR Umaymah 861U

CDGV128771 • LCR861U • 03/24/2008

CE	BW	WW	YW	MK	TM	CED	YG	CW	REA	MB	FT
9	-1.7	48	60	27	50	4	-0.27	3	0.22	-0.23	-0.07

SLC FREEDOM 178F ET
 LCD PRISM 238P
 TSCC TWIN STAR 238H

VAA LEACHMAN NEW DAY 205B
 BB MISS 61Y
 KFW POLLED CRESTON 160C
 KFW HORIZON CELESTE 283C
 VCR PLD VALE SMOKER 12F
 LCD GYPSY 177G

LCD LIONHEART 177L
 LCR NATELY 16N
 LCR 8L

P/E MAY 4 TO JULY 25, 2013 TO V V YOU JEST 11Y ET,
 V V YOUR JOKING RIGHT 35Y ET, BLB PLD REVOLVER 12Z

BW 82
 WW 625
 YW 940

BULL • PUREBRED • RED • POLLED

VV Amaargin 26A

149039 • VV26A • 02/10/2013 • BW: 92
 SIRE: SLC TYE 476T ET

133A

FEMALE • BALANCER 50 • RED • POLLED

CVF Crest View Trinity 5T

CDGV124763 • CVF5T • 01/25/2007

CE	BW	WW	YW	MK	TM	CED	YG	CW	REA	MB	FT
7	2.3	62	94	22	53	2	-0.11	29	0.21	0.07	-0.05

BARM RED BAR M PAY DAY 103L
 BARM RED BAR M R PAY DAY 11R
 BARM RED BAR M LADY 46J

IMP RED BJR MAKE MY DAY 981
 DRF RED DEER RANGE MARIE 126E
 DDH RED HOWE MR MAT DDH 19F
 DDH RED HOWE MS LADY DDH 120G
 GKT BUD 11G
 049C
 DTJ FIRE POWER JERAME 12J ET
 DTJ AMANDA 70F ET

JCGR BAR GT LOUIE 2J
 CVF CREST VIEW RUMER 85R
 DTJ MISS AMANDA 141M

P/E MAY 4 TO JULY 25, 2013 TO V V YOU JEST 11Y ET,
 V V YOUR JOKING RIGHT 35Y ET, BLB PLD REVOLVER 12Z

BW 81
 WW 544
 YW 917

BULL • PERCENTAGE 75 • RED • POLLED

VV Alexander 45A

148999 • VV45A • 02/15/2013 • BW: 84
 SIRE: FRL FIR RIVER RANALDO 38U

135A



LOT 132 LCR UMATILLA 820U

FEMALE • PUREBRED 94 • RED • POLLED

GR Bar GR Temptation 3T

CDGV121772 • GR3T • 03/08/2007

CE	BW	WW	YW	MK	TM	CED	YG	CW	REA	MB	FT
8	2.3	57	82	25	53	6	-0.27	22	0.51	-0.18	-0.06

ARN SIR ARNOLD B921
 GR BAR GR RED ROGUE 181P
 GR BAR GR GILDA 181G

HPL HIGH PLAINS PI 808X
 ARN MISS ARNOLD Z921
 JEB I'M A SENSATION 59X
 GR BAR GR MISS HORIZON X44C
 KCF BENNETT PREMIER Z104
 CTR CEDAR TOP'S PERFECTA
 JEB I'M A SENSATION 59X
 GR BAR GR MS GOLDRUSH 121A

MLLC M/L ADVANTAGE 345C
 GR BAR GR MOONFIRE 70M
 GR BAR GR PRAIRIE FIRE 70F

P/E MAY 4 TO JULY 25, 2013 TO SLC TOUCHDOWN 82W,
 STON STATESMAN 9Y, V V Z-LONG NECK BOTTLE 109Z
 GR 3T has plenty of depth and natural thickness. Her daughter sells as lot 8.

BW 90
 WW 588
 YW 822

FEMALE • PUREBRED • RED • POLLED

VV A Temptation I Am 108A

149026 • VV108A • 02/28/2013 • BW: 78
 SIRE: SLC TYE 476T ET

134A



LOT 135 CVF CREST VIEW TRINITY 5T

FEMALE • PERCENTAGE 75 • RED • POLLED

VV Trilby 25T

CDGV121376 • VV25T • 02/03/2007

CE	BW	WW	YW	MK	TM	CED	YG	CW	REA	MB	FT
7	2.8	64	84	34	66	7	-0.17	23	0.20	-0.19	-0.07

VV BOODOM 5M
 VV RENASANCE JESTER 79R
 LTC RIDGE STAR PLD JEST 280J
 DVE DAVIDSON PLD ROMEO 45K
 VV RHODA 205R

SLC FREEDOM 178F ET
 JBM ALVA 23K
 ATC GOLD STAR POLLED 5D
 LTC RIDGE STAR 67F
 DVE DAVIDSON RED WRAP 26G
 DVE DAVIDSON PLD MS PARTY13F

P/E JUNE 7 TO AUGUST 6, 2013 TO SLC TOUCHDOWN 84W
 V V XCALIBRE 101X

BW 82
 WW 649
 YW 938

136

FEMALE • PUREBRED 94 • RED • POLLED

NLG Pld Northern Toffee 35T

CDGV122101 • NLG35T • 03/09/2007

CE	BW	WW	YW	MK	TM	CED	YG	CW	REA	MB	FT
6	1.7	60	81	29	59	4	-0.26	20	0.28	-0.29	-0.09

SLC FREEDOM 178F ET
 TSCC TWIN STAR ROSARRIO 670R
 TSCC TWIN STAR 670H
 BKS POLLED CADILLAC WILSON
 NLG PLD MERCEDES 10M
 CVG CYPRESS VIEW MEEKO 14E

VAA LEACHMAN NEW DAY 205B
 BB MISS 61Y
 KFW POLLED CRESTON 160C
 EGL D669
 SLC CASH FLOW 11E
 BKS POLLED BROOK 1C
 CVG CYPRESS VIEW COLONEL
 CVG CYPRESS VIEW CONNIE 41C

P/E MAY 4 TO JULY 25, 2013 TO V V YOU JEST 11Y ET,
 V V YOUR JOKING RIGHT 35Y ET, BLB PLD REVOLVER 12Z

BW 98
 WW 590
 YW

137

FEMALE • PUREBRED 94 • RED • POLLED

VV Tito 65T

CDGV121416 • VV65T • 02/12/2007

CE	BW	WW	YW	MK	TM	CED	YG	CW	REA	MB	FT
4	2.3	73	97	26	62	7	-0.17	30	0.22	-0.23	-0.08

BTI RED ALERT 2077K
 DF PROFIT 5P
 AR JULIE 14J
 DGM DEE GEE 2K
 WISK MOUNTAIN DEW 14M
 ATC GOLD STAR PLD JANIS 252J

SLC FREEDOM 178F ET
 BTI LADY GRANITE 2001E ET
 SLC EMPIRE 41E
 AR MISS AR 16D
 VAA LEACHMAN NEW DAY 205B
 DGM HANNA 173H
 ATC GOLD STAR 189F
 ATC GOLD STAR FANCIS 256F

P/E MAY 4 TO JULY 25, 2013 TO V V YOU JEST 11Y ET,
 V V YOUR JOKING RIGHT 35Y ET, BLB PLD REVOLVER 12Z

BW 86
 WW 688
 YW 1074

138

FEMALE • PUREBRED 94 • RED • POLLED

EV Miss Tuna 75T

CDGV122803 • EV75T • 03/16/2007

CE	BW	WW	YW	MK	TM	CED	YG	CW	REA	MB	FT
10	-0.3	62	80	23	55	6	-0.30	16	0.38	-0.29	-0.09

WGG JUST GET-N-GO 90J
 CK RENDEVOUS 28R
 CK BLACKIE'S MARTINA 40M
 JCGR BAR GT LOUIE 2J
 EV PETUNIA 25P
 EV MISSY 66M

WGG FLASHPOINT 91F
 WGG MISS WIND 25B
 WGG KICKAPOO BLACKIE 51K
 CK MISS BRITAIN 16-3 3E
 GKT BUD 11G
 049C
 WGG HUMBUG 72H
 EV 112J

P/E JUNE 7 TO AUGUST 6, 2013 TO SLC TOUCHDOWN 84W
 V V XCALIBRE 101X

BW 79
 WW 674
 YW

EV 75T is a dark red, thick, easy doing female that was purchased from Eyo Valley Ranch when she was Sweetheart Champion Female at Agri-bition. Her 2012 heifer calf sold this past spring to Thackeray Gelbvieh Farms for \$3,600.

139

FEMALE • PUREBRED 94 • RED • POLLED

CES Decka Pepper 85T

CDGV123002 • CES85T • 03/28/2007

CE	BW	WW	YW	MK	TM	CED	YG	CW	REA	MB	FT
11	1.1	62	76	28	59	7	-0.21	15	0.22	-0.36	-0.07

JRI EXTRA EXPOSURE 285L71 ET
 ULL EXTRA RESPECT 24R
 ULL MISS LADY HERO 5N ET
 TAU DR PEPPER 29D
 CES DECKA PEPPER 42R ET
 SLC ANITA ET 232F

FHG FLYING H EXTRA 150D
 JRI MS POLLED SWEETIE 285C6
 JRI PLD FREE AGENT 125J3
 NGAC REMITALL MISS HERO 173J
 DCJ MR PEPPER SHAKER
 TAU BAR 055Z
 VAA LEACHMAN NEW DAY 205B
 BB MISS 61Y

P/E JUNE 7 TO AUGUST 6, 2013 TO SLC TOUCHDOWN 84W
 V V XCALIBRE 101X

CES 85T has proven to be full valued since she was purchased from Decka Farms.

BW 84
 WW 603
 YW 1093

140

FEMALE • PUREBRED • RED • POLLED

VV Amigail 185A

149015 • VV185A • 03/29/2013 • BW: 85

SIRE: TIP MR UTOPIA 70U

139A



LOT 139 EV MISS TUNA 75T



FEMALE • PUREBRED 94 • RED • POLLED

SLC Rebello 95T

CDGV124667 • SLC95T • 12/04/2007

CE	BW	WW	YW	MK	TM	CED	YG	CW	REA	MB	FT
-1	7.8	77	109	18	56	9	-0.10	46	0.16	-0.27	-0.08

TJB JAGERMEISTER 229M - ET
 SLC JAGERMEISTER 40R
 SFL SLC CHOTEAU SUE 95H

BTI RED ALERT 2077K
 59D5 JASMINE 177G ET
 BTI CHOTEAU 2135C
 SFL SUE 120B
 NGAC REMITALL FIRE POWER 101F
 BB MISS 61Y
 XZR XZ COPPER 301C
 SLC REBELLO 113A

P/E JUNE 7 TO AUGUST 6, 2013 TO SLC TOUCHDOWN 84W
 V V XCALIBRE 101X

BW 86
 WW 610
 YW

141



LOT 141 SLC REBELLO 95T

FEMALE • PUREBRED 94 • RED • POLLED

SLC Miss Express 104T

CDGV124669 • SLC104T • 02/07/2007

CE	BW	WW	YW	MK	TM	CED	YG	CW	REA	MB	FT
3	3.2	62	78	24	55	9	-0.26	20	0.24	-0.25	-0.09

TJB JAGERMEISTER 229M - ET
 SLC JAGERMEISTER 40R
 SFL SLC CHOTEAU SUE 95H

XZR C342 (STUBBY)
 SLC MISS EXPRESS 152J
 LNR MISS EXPRESS 442Z ET

BTI RED ALERT 2077K
 59D5 JASMINE 177G ET
 BTI CHOTEAU 2135C
 SFL SUE 120B
 KCF BENNETT HORIZON 103X
 XZR 113A
 KCF POLLED EXPRESS 141R
 LNR MISS SELECT 079U

P/E JUNE 7 TO AUGUST 6, 2013 TO SLC TOUCHDOWN 84W
 V V XCALIBRE 101X

BW 76
 WW 564
 YW

142



LOT 144 VV SUGAR TOFFEE 127T ET

FEMALE • PUREBRED 94 • RED • SCURS

VV Sugar Treat 126T ET

CDGV121287 • VV126TET • 03/04/2007

CE	BW	WW	YW	MK	TM	CED	YG	CW	REA	MB	FT
6	2.1	57	53	32	61	7	-0.40	3	0.43	-0.34	-0.10

JCGR BAR GT LOUIE 2J
 VV RALLY LOU 16R
 LTC RIDGE STAR PLD KELLY 59K

GCC REDNECK 2F
 GCC RED SUGAR 59K
 DVE DAVIDSON MISS SUGAR 50H

GKT BUD 11G
 049C
 ATC GOLD STAR POLLED 5D
 LTC RIDGE STAR 236D
 JWR GUNSMOKE 32Z
 LEF FIONA 11D
 DVE DAVIDSON PARTY BOY 12F
 DVE DAVIDSON MS SUGAR 19C

P/E MAY 4 TO JULY 25, 2013 TO SLC TOUCHDOWN 82W,
 STON STATESMAN 9Y, V V Z-LONG NECK BOTTLE 109Z

V V 126T is another of the long line of Rally Lou and Red Sugar progeny to be bred at V & V Farms. They have the genetic power to make it happen. Full sister to lot 144. A daughter sold to O'Faalen Farms, PEI

BW 88
 WW 648
 YW 1005

143

FEMALE • PUREBRED 94 • RED • SCURS

VV Sugar Toffee 127T ET

CDGV121288 • VV127T • 03/04/2007

CE	BW	WW	YW	MK	TM	CED	YG	CW	REA	MB	FT
7	1.4	59	60	32	62	8	-0.38	6	0.43	-0.34	-0.10

JCGR BAR GT LOUIE 2J
 VV RALLY LOU 16R
 LTC RIDGE STAR PLD KELLY 59K

GCC REDNECK 2F
 GCC RED SUGAR 59K
 DVE DAVIDSON MISS SUGAR 50H

GKT BUD 11G
 049C
 ATC GOLD STAR POLLED 5D
 LTC RIDGE STAR 236D
 JWR GUNSMOKE 32Z
 LEF FIONA 11D
 DVE DAVIDSON PARTY BOY 12F
 DVE DAVIDSON MS SUGAR 19C

P/E MAY 4 TO JULY 25, 2013 TO V V YOU JEST 11Y ET,
 V V YOUR JOKING RIGHT 35Y ET, BLB PLD REVOLVER 12Z

V V 127T is a full sister to lot 143. You will appreciate what this genetic combination has done and will do. They are still young cows with a great future.

BW 86
 WW 584
 YW 946

144

FEMALE • PUREBRED • RED • POLLED

VV Alena 129A

149074 • VV129A • 03/10/2013 • BW: 74

SIRE: PENDING DNA VERIFICATION (WILL BE AVAILABLE SALE DAY)

143A

FEMALE • PUREBRED 94 • RED • POLLED

AWB Birch's Morgan 144T

CDGV122769 • AWB144T • 04/13/2007

CE	BW	WW	YW	MK	TM	CED	YG	CW	REA	MB	FT
10	1.2	69	110	35	70	8	-0.21	37	0.46	-0.32	-0.07

JCGR BAR GT PARADIGM 2H ET
 EGL PABST L011 ET
 EGL PHOEBE G374

SLC FREEDOM 178F ET
 DTJ MORGAN STAR 42M
 ATC GOLD STAR 339E

P/E JUNE 7 TO AUGUST 6, 2013 TO SLC TOUCHDOWN 84W
 V V XCALIBRE 101X

AWB 144T is a very thick made, easy fleshing female that will be marked in everyone's catalogue. She is a Pabst daughter out of the powerful Morgan Star dam. She was a high selling female when purchased by V & V from Aaron Birch. A son sold to Rick and Gail Volek for \$3900.

145

BW 86
 WW 710
 YW



LOT 145 AWB BIRCH'S MORGAN 144T

FEMALE • PUREBRED 94 • RED • POLLED

VV Francis 146T

CDGV121302 • VV146T • 03/09/2007

CE	BW	WW	YW	MK	TM	CED	YG	CW	REA	MB	FT
4	3.6	73	94	26	62	7	-0.14	30	0.14	-0.25	-0.08

BTI RED ALERT 2077K
 AR PARAMOUNT 2R
 AR 63K

SLC HEAVY FIRE POWER 444M
 VV FRANCIS 65R
 SLC PLD FRANCIS 236H

P/E JUNE 7 TO AUGUST 6, 2013 TO SLC TOUCHDOWN 84W
 V V XCALIBRE 101X

The Francis line of females has been very dominant at V & V Farms for a number of years. This cow line has raised a number of high sellers and top replacement females.

146

BW 92
 WW 684
 YW 930

FEMALE • PUREBRED 94 • RED • POLLED

VV Tidy Ribbon 160T

CDGV121309 • VV160T • 03/16/2007

CE	BW	WW	YW	MK	TM	CED	YG	CW	REA	MB	FT
5	1.8	71	99	26	62	8	-0.11	31	0.07	-0.26	-0.07

BTI RED ALERT 2077K
 DF PROFIT 5P
 AR JULIE 14J

DTJ FIRE POWER JERAME 12J ET
 SBR MISS RED RIBBON P12
 GCC PLD RED RIBBON 137L

P/E JUNE 7 TO AUGUST 6, 2013 TO SLC TOUCHDOWN 84W
 V V XCALIBRE 101X

V V 160T has loads of maternal value in her pedigree with the former National Champion Female AR Julie 14J, BB 61Y and the Ribbon cow family.

147

BW 84
 WW 630
 YW 1048

FEMALE • PUREBRED • RED • POLLED

VV Arleen 193A

149088 • VV193A • 03/28/2013 • BW: 86
 SIRE: FRL FIR RIVER SONAR 36S ET

146A

FEMALE • PUREBRED 94 • RED • POLLED

VV Tina 162T

CDGV121310 • VV162T • 03/17/2007

CE	BW	WW	YW	MK	TM	CED	YG	CW	REA	MB	FT
9	1.8	61	83	26	57	9	-0.26	21	0.38	-0.28	-0.08

BTI GENERAL 2207G
 BTI 2085L
 BTI CATERINA B 2090F

JCGR BAR GT LOUIE 2J
 VV RACHELLE 3R
 VV MALLORY 12M

P/E MAY 4 TO JULY 25, 2013 TO VV11Y, VV 35Y, BLB 12Z,
 SLC 82W, STON 9Y AND VV 109Z

148

BW 76
 WW 631
 YW 1079

FEMALE • PUREBRED 94 • RED • POLLED

VV Traviata 174T

CDGV121321 • VV174T • 03/25/2007

CE	BW	WW	YW	MK	TM	CED	YG	CW	REA	MB	FT
8	1.7	71	96	27	62	7	-0.12	28	0.04	-0.20	-0.08

BTI RED ALERT 2077K
 DF PROFIT 5P
 AR JULIE 14J

XZR C342 (STUBBY)
 SLC LADY ANITA 172L
 SLC ANITA 19F ET

P/E MAY 4 TO JULY 25, 2013 TO V V YOU JEST 11Y ET,
 V V YOUR JOKING RIGHT 35Y ET, BLB PLD REVOLVER 12Z

149

BW 84
 WW 603
 YW 1064



FEMALE • PUREBRED 94 • RED • POLLED

VV Trixie 181T

CDGV121328 • VV181T • 04/05/2007

CE	BW	WW	YW	MK	TM	CED	YG	CW	REA	MB	FT
6	2.0	68	84	30	64	6	-0.16	21	0.12	-0.28	-0.07

BTI RED ALERT 2077K
 DF PROFIT 5P
 AR JULIE 14J

DEG MEL GIBSON 72M
 JC PEMBINA PEARL 639P
 JC PEMBINA HESTER 511H

P/E MAY 4 TO JULY 25, 2013 TO V V YOU JEST 11Y ET,
 V V YOUR JOKING RIGHT 35Y ET, BLB PLD REVOLVER 12Z

A daughter sells as lot 75.

150

BW 84
 WW 681
 YW 1094

SLC FREEDOM 178F ET
 BTI LADY GRANITE 2001E ET
 SLC EMPIRE 41E
 AR MISS AR 16D
 MMM CALBERTA RESOURCE 8307H
 KGS KERIGLEN ELIZA JANE 72E
 SLC FULLER 84F ET
 JC MISS PEMBINA 170C

FEMALE • PERCENTAGE 75 • RED • POLLED

ULL Miss Nadine 13S

CDGV119530 • ULL13S • 02/10/2006

CE	BW	WW	YW	MK	TM	CED	YG	CW	REA	MB	FT
8	0.5	51	64	35	60	9	-0.21	8	0.16	-0.21	-0.07

NGAC REMITALL PLD EXCEL 232E
 SLC HEAD START 437M
 SFL SLC CHOTEAU SUE 95H

LEF FREESTYLE 1K
 DDW DF PLD NADINE 13N

P/E JUNE 7 TO AUGUST 6, 2013 TO SLC TOUCHDOWN 84W
 V V XCALIBRE 101X

154

BW 82
 WW 564
 YW

VAA LEACHMAN NEW DAY 205B
 BJI CHAUTAUQUA GIRL 927Y
 BTI CHOTEAU 2135C
 SFL SUE 120B
 SLC FREEDOM 178F ET
 LEF ROSA 2H

FEMALE • PUREBRED • RED • POLLED

VV Aurora 177A

149062 • VV177A • 04/11/2013 • BW: 80
 SIRE: V V X-TRA COOL 160X

154A



LOT 156 VV SUPERBUM 19S

FEMALE • PUREBRED 94 • RED • POLLED

LCR Texas Tea 762T

CDGV128265 • LCR762T • 09/01/2007

CE	BW	WW	YW	MK	TM	CED	YG	CW	REA	MB	FT
8	-1.1	50	61	35	60	3	-0.32	4	0.29	-0.31	-0.09

SLC FREEDOM 178F ET
 LCD PRISM 238P
 TSCC TWIN STAR 238H

TSCC TWIN STAR HERITAGE 227H
 LCD KATRINA 162K
 CVG CYPRESS VIEW KYLIE 30Z

P/E MAY 4 TO JULY 25, 2013 TO SLC TOUCHDOWN 82W,
 STON STATESMAN 9Y, V V Z-LONG NECK BOTTLE 109Z

A son sold to Dar-Lin Ranching.

151

BW 92
 WW 350
 YW 833

VAA LEACHMAN NEW DAY 205B
 BB MISS 61Y
 KFW POLLED CRESTON 160C
 KFW HORIZON CELESTE 283C
 TSCC POLLED FEATURE 822F
 JRI PLD JACQUELINE 227C51
 DDN BELLY RIVER BRYCE 52U
 BFL MISS BELGRAD 122M

FEMALE • PUREBRED • RED • POLLED

VV Antoinette 15A

149037 • VV15A • 02/06/2013 • BW: 92
 SIRE: SLC TOUCHDOWN 84W

151A

FEMALE • PUREBRED 94 • RED • POLLED

VV Serena 35S

CDGV116397 • VV35S • 01/21/2006

CE	BW	WW	YW	MK	TM	CED	YG	CW	REA	MB	FT
3	3.9	68	92	30	65	4	-0.28	30	0.58	-0.31	-0.07

GKT BUD 11G
 JCGR BAR GT LOUIE 2J
 049C

ATC GOLD STAR 33G
 DAT CIRCLE T JULIETTE 914J
 DAT CIRCLE T FELECIA 626F

P/E MAY 4 TO JULY 25, 2013 TO SLC TOUCHDOWN 82W,
 STON STATESMAN 9Y, V V Z-LONG NECK BOTTLE 109Z

Here is a Louie daughter out of a cow family that helped build the V & V program in the early years. Solid cattle that work extremely well.

BW 90
 WW 664
 YW 1003

GKT BOO BOO 155E
 GKT KATIE
 PGRS SHINING SPIRIT
 041Z
 ATC GOLD STAR 49C
 ATC GOLD STAR 6E
 DDN BELLYRIVER WINGER 146A
 DAT CIRCLE T RINA 59S

FEMALE • PUREBRED • RED • POLLED

VV Anemone 38A

149130 • VV38A • 02/14/2013 • BW: 92
 SIRE: FRL FIR RIVER RANALDO 38U

155A

FEMALE • PUREBRED 94 • RED • POLLED

VV Superbum 19S

CDGV116381 • VV19S • 01/18/2006

CE	BW	WW	YW	MK	TM	CED	YG	CW	REA	MB	FT
8	2.2	75	97	20	58	6	-0.28	29	0.59	-0.34	-0.07

GKT BUD 11G
 JCGR BAR GT LOUIE 2J
 049C

SLC FREEDOM 178F ET
 PAN PANDA KISMET 172K
 PAN PANDA HEATHER 105H

P/E MAY 4 TO JULY 25, 2013 TO V V YOU JEST 11Y ET,
 V V YOUR JOKING RIGHT 35Y ET, BLB PLD REVOLVER 12Z

This beautifully made female has produced well at V & V Farms. It would be great to have a whole herd just like her. A daughter sells as lot 108.

BW 90
 WW 684
 YW 1010

GKT BOO BOO 155E
 GKT KATIE
 PGRS SHINING SPIRIT
 041Z
 VAA LEACHMAN NEW DAY 205B
 BB MISS 61Y
 ARN SIR ARNOLD B921
 PAN PANDA CLASSIC FAIR 10C

FEMALE • PUREBRED 94 • RED • POLLED

FRL Fir River Show Biz 42S

CDGV117565 • FRL42S • 01/26/2006

CE	BW	WW	YW	MK	TM	CED	YG	CW	REA	MB	FT
9	0.9	66	89	26	59	10	-0.25	23	0.45	-0.43	-0.07

VAA LEACHMAN NEW DAY 205B
 SLC FREEDOM 178F ET
 BB MISS 61Y

EGL GADGET F1258
 FRL FIR RIVER MISS PRESTIGE
 DTJ LADY MARY ANN 43L

P/E JUNE 7 TO AUGUST 6, 2013 TO
 V V XCALIBRE 101X

GLT SENSATION'S DAY 21Y
 VAA 023Z
 BB MR FORKAS 1S (JSE M2)
 BB BELL ORCHID 2U
 JEB POLLED GIZMO 17Z
 EGL C151 ET
 BTI GIZMO 2002H
 MWH LADY 3H

BW 75
 WW 652
 YW 852

Here is a deep, thick, good uddered female that has and will continue to be a top producing brood cow.

157



LOT 157 FRL FIR RIVER SHOW BIZ 42S

FEMALE • PUREBRED 94 • RED • POLLED

VV Santa Fee Trix

CDGV116482 • VV129S • 03/01/2006

CE	BW	WW	YW	MK	TM	CED	YG	CW	REA	MB	FT
5	1.6	60	67	29	59	9	-0.21	11	0.13	-0.28	-0.07

BTI RED ALERT 2077K
 DF PROFIT 5P
 AR JULIE 14J

DTJ FIRE POWER JAKE 16J ET
 WGG MADEMOISELLE TRIX 68M
 WGG KICKAPOO LADY 13K

P/E JUNE 7 TO AUGUST 6, 2013 TO
 SLC TOUCHDOWN 84W
 V V XCALIBRE 101X

V V 129S is a daughter of WGG 68M, a cow whose progeny have been well accepted. A number of these same good genetics sell.

SLC FREEDOM 178F ET
 BTI LADY GRANITE 2001E ET
 SLC EMPIRE 41E
 AR MISS AR 16D
 NGAC REMITALL FIRE POWER 101F
 BB MISS 61Y
 SINK POLLED GUZZLER D82
 WGG MISS WIND 47B

BW 84
 WW 674
 YW 1004

158

FEMALE • PUREBRED 94 • RED • HORNED

VV Susan 146S

CDGV116498 • VV146S • 03/22/2006

CE	BW	WW	YW	MK	TM	CED	YG	CW	REA	MB	FT
10	-1.2	46	47	38	61	6	-0.28	-5	0.09	-0.17	-0.08

SLC MAGIC MAN 313K
 CES DECKA DIAGO 42P
 SLC ANITA ET 232F

ATC GOLD STAR HUSTON 214H
 VV MARY 19M
 VCR MS VALE HOPE 26H

P/E MAY 4 TO JULY 25, 2013 TO V V YOU JEST 11Y ET,
 V V YOUR JOKING RIGHT 35Y ET, BLB PLD REVOLVER 12Z

A daughters have sold to Allan and Gail Richardson and Twin Bridges Farms. Check out her other daughters in the sale.

SLC GALAXY 72G
 SLC DELIA 5H
 VAA LEACHMAN NEW DAY 205B
 BB MISS 61Y
 ATC GOLD STAR POLLED 5D
 RTN BORDER RIDGE 10Y
 XZR CANADIAN HI PLAINS
 BB MISS 136A

BW 72
 WW 628
 YW 1007

159

BULL • PUREBRED • RED • POLLED

VV Ashkenazi M 190A

149076 • VV192A • 04/02/2013 • BW: 84
 SIRE: LCR XZAIVER 20X

158A



FEMALE • PERCENTAGE 63 • RED • POLLED

SPG Sunny Plain Linda 625S

CDGV117342 • SPG625S • 02/18/2006

CE	BW	WW	YW	MK	TM	CED	YG	CW	REA	MB	FT
8	-0.1	54	70	34	61	6	-0.28	11	0.30	-0.14	-0.08

WGG KICKAPOO BLACKIE 51K
 SPG PLD SUNNY PLAIN NICK 6N
 SPG 080L

DVE DAVIDSON PLD TONY 86H
 SPG MS SUNNY PLAIN LINDA 76K

P/E MAY 4 TO JULY 25, 2013 TO SLC TOUCHDOWN 82W,
 STON STATESMAN 9Y, V V Z-LONG NECK BOTTLE 109Z

A son sold to the Zentners.

KHR GENES SUR'NUF 69G
 WGG GROOVY GADGET 3G
 SPG JUDGE 101J

DVE DAVIDSON PLD CASH II 55F
 DVE DAVIDSON MS PLD RRRAP70F

BW 82
 WW 609
 YW 744

160

FEMALE • PERCENTAGE 75 • RED • POLLED

VV Alinda Lou 97A

149058 • VV97A • 02/24/2013 • BW: 96
 SIRE: FRL FIR RIVER RANALDO 38U

160A



FEMALE • PERCENTAGE 50 • RED • POLLED

FUN Sugar 627S

CDGV119166 • FUN627S • 04/01/2006

CE	BW	WW	YW	MK	TM	CED	YG	CW	REA	MB	FT
3	4.0	46	69	22	45	-1	-0.14	17	0.06	0.00	-0.06

JPP RED HILL SPRINGS ROBIN HOOD 6F
 LPRA RED ILENROC RISING STAR 18L
 PRW RED WILD ROSE STAR 81H

JHL LCHMN PARTY BOY 8001D ET
 FUN PARTY ALIVIA 624M
 NGA REMITALL ALIVIA 47A

P/E MAY 4 TO JULY 25, 2013 TO V V YOU JEST 11Y ET,
 V V YOUR JOKING RIGHT 35Y ET, BLB PLD REVOLVER 12Z

161

BW 90
 WW 553
 YW



LOT 161 FUN SUGAR 627S

FEMALE • PERCENTAGE 75 • RED • POLLED

SPG Sunny Plain Hope 640S

CDGV117349 • SPG640S • 02/27/2006

CE	BW	WW	YW	MK	TM	CED	YG	CW	REA	MB	FT
8	0.6	56	75	24	52	5	-0.25	15	0.24	-0.21	-0.08

WGG KICKAPOO BLACKIE 51K
 SPG PLD SUNNY PLAIN NICK 6N
 SPG 080L

SPG FREE LANCE 64L
 SPG SUNNY PLAIN NOKIA 33N

P/E JUNE 7 TO AUGUST 6, 2013 TO SLC TOUCHDOWN 84W
 V V XCALIBRE 101X

A daughters have sold to Allan and Gail Richardson and Twin Bridges Farms. Check out her other daughters in the sale.

162

BW 86
 WW 656
 YW 825



LOT 162 SPG SUNNY PLAIN HOPE 640S

FEMALE • PERCENTAGE 50 • RED • POLLED

WJW Double U Rivera 646S

CDGV118206 • WJW646S • 02/27/2006

CE	BW	WW	YW	MK	TM	CED	YG	CW	REA	MB	FT
9	-1.0	39	51	25	44	7	-0.23	-2	0.13	-0.08	-0.06

DUA RED U-2 ICON 223M
 DUA RED U-2 ILLUSION 434P
 DUA RED U-2 LADY 61H

SINK FINAL TOUCH F601
 DKM CHARMAC MS KERRY 6K
 DKM CHARMAC MS RIVIERA 36E

P/E JUNE 7 TO AUGUST 6, 2013 TO SLC TOUCHDOWN 84W
 V V XCALIBRE 101X

163

BW 85
 WW 496
 YW



LOT 163 WJW DOUBLE U RIVERA 646S

FEMALE • PERCENTAGE 75 • RED • POLLED

VV Aphrodite 203A

149157 • VV203A • 03/15/2013 • BW: 90
 SIRE: SLC TOUCHDOWN 138X

163A

FEMALE • PUREBRED 88 • RED • POLLED

DEG Susanne 713S

CDGV118519 • DEG713S • 02/15/2006

164

CE	BW	WW	YW	MK	TM	CED	YG	CW	REA	MB	FT
4	2.7	65	96	28	60	9	-0.19	31	0.27	-0.16	-0.08

DL JEN-TY BLK IMPRINT 143L
 DL JEN-TY COPPER 100N
 JC PEMBINA KATE 563K

CES DECKA JACK DANIELS 129J
 DKM CHARMAC MS SHAPIRO 20H
 GKT BOO BOO 155E
 JC PEMBINA HESTER 511H
 WGG WINDY PERFECTO 112B
 ARO MS RED EDGE Z049P
 LEF SAGE 18X

WGG FLASHPOINT 91F
 LC WANDERING HALLEY 451H
 SBG SKY BLUE CHAR 35D

P/E MAY 4 TO JULY 25, 2013 TO V V YOU JEST 11Y ET,
 V V YOUR JOKING RIGHT 35Y ET, BLB PLD REVOLVER 12Z

BW 88
WW 598
YW

DEG 713S is a highly productive female with many progeny having sold in the annual spring sales.

FEMALE • PUREBRED 94 • RED • POLLED

DTJ Nali Boo R7

CDGV110720 • DTJR7 • 02/23/2005

165

CE	BW	WW	YW	MK	TM	CED	YG	CW	REA	MB	FT
9	2.3	52	62	30	56	10	-0.29	9	0.39	-0.09	-0.07

BTI GENERAL 2207G
 BTI 2085L
 BTI CATERINA B 2090F

BTI DUKE 2148D
 COL 219Y
 CON UR DODGER 401D
 BTI CATERINA 2147C
 FHG FLYING H CADILLAC 184C
 CCD X55
 KCF BENNETT C333
 MWH FARAH 37F

GKT BOO BOO 155E
 VV NALI BOO 31N
 MWH MISS VALI 15J

P/E MAY 4 TO JULY 25, 2013 TO V V YOU JEST 11Y ET,
 V V YOUR JOKING RIGHT 35Y ET, BLB PLD REVOLVER 12Z

BW 82
WW 559
YW 1046

DTJ R7 produced a high selling son that is now working in the Gill herd.



LOT 166 VV RANDI-LEE 23R

FEMALE • PERCENTAGE 50 • RED • POLLED

VV Randi-Lee 23R

CDGV108854 • VV23R • 02/02/2005

166

CE	BW	WW	YW	MK	TM	CED	YG	CW	REA	MB	FT
8	-0.3	51	63	24	50	2	-0.24	6	0.15	-0.11	-0.07

ATC GOLD STAR AUSTRIA 10A HEIMO
 LTC GOLD STAR 204F LIGI
 ATC GOLD STAR 4C HCG TRIANGLE T TOPPER 26T
 ATC GOLD STAR 3A

P/E JUNE 7 TO AUGUST 6, 2013 TO SLC TOUCHDOWN 84W
 V V XCALIBRE 101X

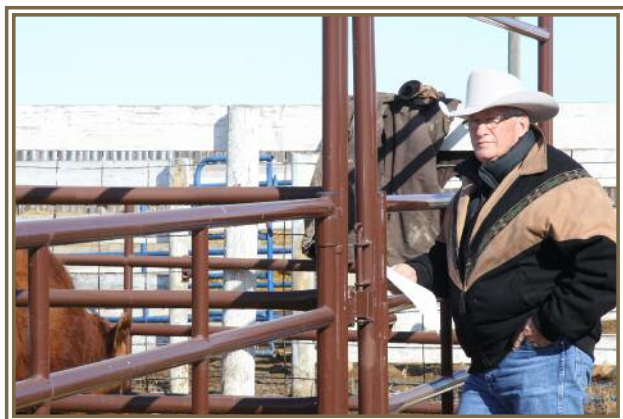
BW 80
WW 670
YW 1044

FEMALE • PERCENTAGE 75 • RED • POLLED

VV Ashley-Lee 180A

149119 • VV180A • 04/12/2013 • BW: 88
 SIRE: V V XCALIBRE 101X

166A



FEMALE • PUREBRED 94 • RED • POLLED

STON Miss Paradee 64R

168

CDGV111280 • STON64R • 02/15/2005

CE	BW	WW	YW	MK	TM	CED	YG	CW	REA	MB	FT
7	1.0	76	88	15	53	6	-0.24	22	0.39	-0.15	-0.07

SLC FREEDOM 178F ET
 BTI RED ALERT 2077K
 BTI LADY GRANITE 2001E ET

VAA LEACHMAN NEW DAY 205B
 BB MISS 61Y
 BTI ZORRO 2143Z
 KAB LADY GRANITE 432S
 FHG FLYING H CADILLAC 184C
 CCD X55
 JBM SILAS 214H
 HG MISS PINEHILL 132H

GKT BOO BOO 155E
 JBM PARADEE 14N
 JBM PARADE 146L

P/E MAY 4 TO JULY 25, 2013 TO V V YOU JEST 11Y ET,
 V V YOUR JOKING RIGHT 35Y ET, BLB PLD REVOLVER 12Z

BW 79
 WW 819
 YW 1169

STON 64R was the 2006 Sweetheart Champion at Agribition. A daughter sells as lot 41.



LOT 168 STON MISS PARADEE 64R

FEMALE • PUREBRED 88 • RED • POLLED

CVF Crest View Rusti 80R

169

CDGV112489 • CVF80R • 02/03/2005

CE	BW	WW	YW	MK	TM	CED	YG	CW	REA	MB	FT
10	0.6	56	72	18	47	7	-0.29	13	0.53	-0.25	-0.06

GKT BUD 11G
 JCGR BAR GT LOUIE 2J
 049C

GKT BOO BOO 155E
 GKT KATIE
 PGRS SHINING SPIRIT
 041Z
 GLT SENSATION'S DAY 21Y
 VAA 023Z
 BTI GASTON 2049G

VAA LEACHMAN NEW DAY 205B
 MCCI 047M
 MCCI 047K

P/E MAY 4 TO JULY 25, 2013 TO SLC TOUCHDOWN 82W,
 STON STATESMAN 9Y, V V Z-LONG NECK BOTTLE 109Z

BW 89
 WW 595
 YW

VV 80R is a beautiful sound producing top brood cow with a good track record. A son has sold to the Gills.

FEMALE • PUREBRED • RED • POLLED

VV Arianna 116A

169A

149000 • VV116A • 03/02/2013 • BW: 90
 SIRE: FRL FIR RIVER RANALDO 38U



LOT 169 CVF CREST VIEW RUSTI 80R

FEMALE • PUREBRED 94 • RED • POLLED

CVF Crest View Rory 88R

170

CDGV112477 • CVF88R • 02/17/2005

CE	BW	WW	YW	MK	TM	CED	YG	CW	REA	MB	FT
4	3.2	81	130	33	73	11	-0.11	52	0.34	-0.27	-0.07

EGL PABST L011 ET
 DTJ NORTHERN PABST 147N
 DTJ PLD MISS SARAH KAY 217K

JCGR BAR GT PARADIGM 2H ET
 EGL PHOEBE G374
 DTJ SON OF TRIPLE M 30G ET
 SFL 327F
 VAA LEACHMAN NEW DAY 205B
 BB MISS 61Y
 ATC GOLD STAR POLLED 5D
 ATC GOLD STAR CANDY 206C

SLC FREEDOM 178F ET
 DTJ MANDY 17M
 ATC GOLD STAR KANDY 72K

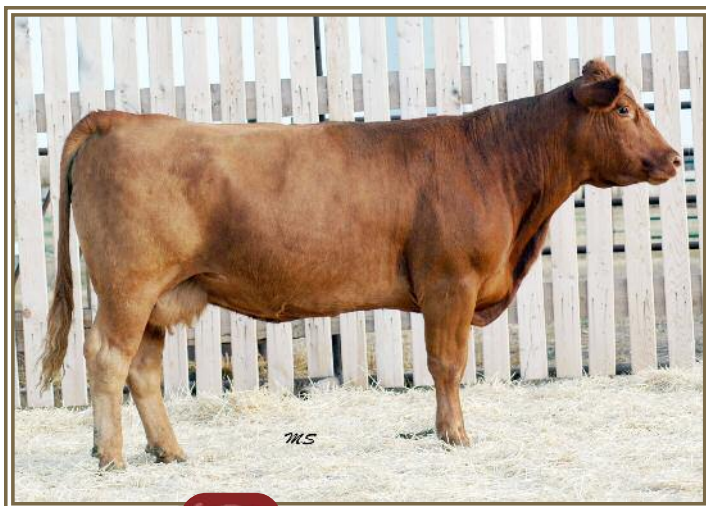
P/E MAY 4 TO JULY 25, 2013 TO SLC TOUCHDOWN 82W,
 STON STATESMAN 9Y, V V Z-LONG NECK BOTTLE 109Z

BW 87
 WW 648
 YW

CVF 88R is another top female purchased from Crest View. She has produced well at V & V with a son selling to Ross Creek Ranching for \$4500.



LOT 170 CVF CREST VIEW RORY 88R



LOT 171 VV REAL KOOL 102R

FEMALE • PUREBRED 94 • RED • POLLED

VV Real Kool 102R

CDGV112610 • VV102R • 03/03/2005

171

CE	BW	WW	YW	MK	TM	CED	YG	CW	REA	MB	FT
4	2.5	62	84	25	56	8	-0.23	23	0.48	-0.07	-0.05

JEB POLLED GIZMO 17Z
 SPUR BERETTA 703G
 SPUR VANESSA 19E ET
 GKT BOO BOO 155E
 ATC GOLD STAR KOO KOO 32K
 ATC GOLD STAR PLD GWEN 327G

ATM TEJAS ROLLS ROYCH 868
 JEB MS. SENSATION 31X
 BTI BACKDRAFT 2079B ET
 ARO MS SANDHILLER Z011P
 FHG FLYING H CADILLAC 184C
 CCD X55
 ATC GOLD STAR POLLED 5D
 ATC GOLD STAR 48Y

P/E MAY 4 TO JULY 25, 2013 TO V V YOU JEST 11Y ET,
 V V YOUR JOKING RIGHT 35Y ET, BLB PLD REVOLVER 12Z

BW 86
WW 601
YW 898

102R's dam was the high selling bred heifer at Albert Carlson's Dispersal Sale. This cow can be found in many pedigrees in the top females at V & V Farms.

BULL • BALANCER 50 • RED • POLLED

VV Aleron 46A

149063 • VV46A • 02/16/2013 • BW: 94

SIRE: SLC RED ANGUS BULL

171A

FEMALE • PUREBRED 94 • RED • POLLED

VV Trix 131R

CDGV108871 • VV131R • 04/02/2005

172

CE	BW	WW	YW	MK	TM	CED	YG	CW	REA	MB	FT
9	1.3	65	95	29	62	12	-0.20	28	0.34	-0.27	-0.07

SLC FREEDOM 178F ET
 VV BOODOM 5M
 JBM ALVA 23K

DTJ FIRE POWER JAKE 16J ET
 WGG MADEMOISELLE TRIX 68M
 WGG KICKAPOO LADY 13K

P/E MAY 4 TO JULY 25, 2013 TO VV11Y, VV 35Y, BLB 12Z,
 SLC 82W, STON 9Y AND VV 109Z

BW 78
WW 661
YW 1093

V V 131R is one of the great cows at V & V Farms. A number of her daughters sell. There is no question what this top quality female has and will accomplish. A son is working at RPS Gelbvieh.

VAA LEACHMAN NEW DAY 205B
 BB MISS 61Y
 GKT BOO BOO 155E
 JBM ALINA 31H
 NGAC REMITALL FIRE POWER 101F
 BB MISS 61Y
 SINK POLLED GUZZLER D82
 WGG MISS WIND 47B

FEMALE • PUREBRED 94 • RED • POLLED

VV Hale Lou 2P

CDGV104017 • VV2P • 01/17/2004

174

CE	BW	WW	YW	MK	TM	CED	YG	CW	REA	MB	FT
11	-1.3	51	63	22	48	7	-0.33	4	0.38	-0.23	-0.08

GKT BUD 11G
 JCGR BAR GT LOUIE 2J
 049C

XZR C342 (STUBBY)
 MSW MWH HALEY 26E
 SLC MISS SYMBOL 21C

P/E MAY 4 TO JULY 25, 2013 TO SLC TOUCHDOWN 82W,
 STON STATESMAN 9Y, V V Z-LONG NECK BOTTLE 109Z

BW 72
WW 642
YW 904

V V 2 P was the dam of a high selling bull to Rick and Gail Volek at the 2013 Bull Sale.

GKT BOO BOO 155E
 GKT KATIE
 PGRS SHINING SPIRIT
 041Z
 KCF BENNETT HORIZON 103X
 XZR 113A
 MACD VALHALLA BLACK SYMBOL
 SLC BRADY'S GAL 41A

FEMALE • PERCENTAGE 50 • RED • POLLED

LCR Page 37P

CDGV124835 • LCR37P • 03/21/2004

175

CE	BW	WW	YW	MK	TM	CED	YG	CW	REA	MB	FT
6	-0.7	46	55	28	51	2	-0.27	1	0.25	-0.09	-0.07

TSSC TWIN STAR HERITAGE 227H
 LCD KURT 121K
 LCD DONNA 121B

TSSC POLLED FEATURE 822F
 JRI PLD JACQUELINE 227C51
 KFW LONE STAR ZORO
 CVG CYPRESSVIEW JESSICA 12Y

P/E JUNE 7 TO AUGUST 6, 2013 TO SLC TOUCHDOWN 84W
 V V XCALIBRE 101X

BW 90
WW 686
YW 968



LOT 174 VV HALE LOU 2P



FEMALE • PUREBRED 94 • RED • POLLED

DTJ Miss Anita 57P

CDGV101364 • DTJ57P • 03/04/2004

CE	BW	WW	YW	MK	TM	CED	YG	CW	REA	MB	FT
5	3.8	74	100	26	63	12	-0.12	34	0.30	-0.20	-0.05

EGL EXECUTIVE J159
 EGL EL DORADO L058
 EGL J036 ET

BTI BARCELONA 2057B
 SLC 163E ET
 BB MISS 61Y

FHG FLYING H EXTRA 150D
 EGL F1281
 EGL GADGET F1258
 EGL D009
 MACD VALHALLA BLACK SYMBOL
 TJR VICKIE VAIL X1 ET
 BB MR FORKAS 1S (JSE M2)
 BB BELL ORCHID 2U

P/E MAY 4 TO JULY 25, 2013 TO SLC TOUCHDOWN 82W,
 STON STATESMAN 9Y, V V Z-LONG NECK BOTTLE 109Z

This El Dorado daughter continues to shine every year raising top quality calves. She will have many more greats.



BW	96
WW	593
YW	966

FEMALE • PUREBRED • RED • POLLED

VV Miss Anita 33A

149004 • VV33A • 02/12/2013 • BW: 88
 SIRE: STON STATESMAN 9Y



FEMALE • PERCENTAGE 75 • RED • POLLED

VV Phantom Princess 70P

CDGV104079 • VV79P • 02/18/2004

CE	BW	WW	YW	MK	TM	CED	YG	CW	REA	MB	FT
4	2.2	64	80	27	58	8	-0.19	20	0.13	-0.17	-0.08

SLC CARREL'S STUBBY 267L
 SLC ANITA ET 263F

MWH POLLED KONRAD 9K
 VV MARTHA 23M
 ATC GOLD STAR PLD JAYDEE 21Y

VAA LEACHMAN NEW DAY 205B
 BB MISS 61Y
 BTI GIZMO 2002H
 MWH CONNIE 8H
 DVE DAVIDSON POLLED ACE 52C
 ATC GOLD STAR PLD GYPSY 111G

P/E MAY 4 TO JULY 25, 2013 TO V V YOU JEST 11Y ET,
 V V YOUR JOKING RIGHT 35Y ET, BLB PLD REVOLVER 12Z



BW	78
WW	681
YW	897

BULL • PERCENTAGE 88 • RED • POLLED

VV Alonso 32A

149143 • VV32A • 02/12/2013 • BW: 96
 SIRE: FRL FIR RIVER BIG 'N' RICH 438Y



FEMALE • PUREBRED 94 • RED • POLLED

JBM Willow 159P

CDGV103019 • JBM159P • 03/15/2004

CE	BW	WW	YW	MK	TM	CED	YG	CW	REA	MB	FT
6	2.4	57	70	26	54	6	-0.31	15	0.42	-0.09	-0.08

VDG VAN DEAU BLUE SUEDE SHOE
 GCC PLD LINKAGE 158L
 GCC PEANUT 2Z

GKT BOO BOO 155E
 JBM WILLOW 51L
 JBM WYLMA 24H

BTI ELVIS 2155E
 WGG EVENING TWILIGHT 212E
 SRE CHARLIE BROWN 54W
 GCC GELFORD LASS 40S
 FHG FLYING H CADILLAC 184C
 CCD X55
 HHF KEYSTONE D19
 WGG MISS WIND 50C

P/E JUNE 7 TO AUGUST 6, 2013 TO SLC TOUCHDOWN 84W
 V V XCALIBRE 101X



BW	75
WW	623
YW	

FEMALE • PUREBRED 94 • RED • POLLED

BLB Goodview Pld Hope 61P

CDGV103899 • BLB61P • 03/13/2004

CE	BW	WW	YW	MK	TM	CED	YG	CW	REA	MB	FT
6	3.2	70	97	37	72	11	-0.21	31	0.37	-0.22	-0.08

TSCC TWIN STAR GARNETT 533G
 BBB BROOK KON AIR 226K
 BBB BROOK HOPE 186H

OHF DURANGO 1K
 BLB GOODVIEW PLD HOPE 75M
 BLB GOODVIEW PLD BLACK MAGIC

GATZ JRI POLLED ULTIMATE ET
 GFA BERGEN ELVIRA 533E
 MGF MIDNIGHT'S MAGIC 17E
 BBB CECILIA 275F
 SLC FREEDOM 178F ET
 VCR MS VALE HAVEN 11H
 GKT BOO BOO 155E
 GLG TOWAW HEATHER 21E ET

P/E MAY 4 TO JULY 25, 2013 TO V V YOU JEST 11Y ET,
 V V YOUR JOKING RIGHT 35Y ET, BLB PLD REVOLVER 12Z

Since V & V Farms purchased this female from Goodview she has done nothing but raise a great one. Lon Carlson purchased a son for \$5,500 to work in his program.



BW	94
WW	667
YW	989

BULL • PUREBRED • RED • POLLED

VV Armstrong 54A

148993 • VV54A • 02/17/2013 • BW: 98
 SIRE: FRL FIR RIVER RANALDO 38U



FEMALE • PERCENTAGE 50 • RED • POLLED

VV Pandora 121P

CDGV106611 • VV121P • 03/24/2004

CE	BW	WW	YW	MK	TM	CED	YG	CW	REA	MB	FT
5	0.9	59	70	27	56	7	-0.14	12	0.10	0.04	-0.05

BTI GIZMO 2002H
 MWH POLLED KONRAD 9K
 MWH CONNIE 8H

JEB POLLED GIZMO 17Z
 BTI MS BUNA 2074F
 MWH BEEP 1B
 MWH 30F

P/E MAY 4 TO JULY 25, 2013 TO V V YOU JEST 11Y ET,
 V V YOUR JOKING RIGHT 35Y ET, BLB PLD REVOLVER 12Z



BW	80
WW	716
YW	976

FEMALE • PUREBRED 94 • RED • POLLED

LC Wandering Pansy 483P

CDGV101970 • LC483P • 02/16/2004

CE	BW	WW	YW	MK	TM	CED	YG	CW	REA	MB	FT
5	0.6	65	89	30	62	6	-0.29	23	0.43	-0.25	-0.09

GKT BUD 11G
 JCGR BAR GT LOUIE 2J
 049C

ATC GOLD STAR GALAXY 42G
 ATC GOLD STAR PLD JULIA 32J
 ATC GOLD STAR FAVORITE 372F

GKT BOO BOO 155E
 GKT KATIE
 PGRS SHINING SPIRIT
 041Z
 DVE DAVIDSON POLLED ACE 52C
 ATC GOLD STAR ET 92A
 ATC GOLD STAR AUSTRIA 10A
 ATC GOLD STAR 15Y

P/E MAY 4 TO JULY 25, 2013 TO SLC TOUCHDOWN 82W,
 STON STATESMAN 9Y, V V Z-LONG NECK BOTTLE 109Z

A daughter sells as lot 49.



BW	88
WW	595
YW	957

FEMALE • PUREBRED • RED • POLLED

VV Agnus 119A

149031 • VV119A • 03/04/2013 • BW: 90
 SIRE: V V WATER LOU 61W ET



FEMALE • PUREBRED 94 • RED • POLLED

SBR Miss Kate 5N

CDGV95639 • SBR5N • 01/21/2003

CE	BW	WW	YW	MK	TM	CED	YG	CW	REA	MB	FT
5	3.5	54	59	30	57	5	-0.33	9	0.32	-0.29	-0.09

VDG VAN DEAU BLUE SUEDE SHOE
 CCF GREAT LAKES CHISHOLM 30L
 CCF GREAT LAKES BLYTH LASS

WGG JUST KOOL 138J
 CCF GREAT LAKES COOL KATE
 CCF 12G

P/E MAY 4 TO JULY 25, 2013 TO SLC TOUCHDOWN 82W,
 STON STATESMAN 9Y, V V Z-LONG NECK BOTTLE 109Z

A son sold to Clayridge Farms Inc for \$3700.

183

BW 82
 WW 543
 YW 858

FEMALE • PERCENTAGE 50 • RED • POLLED

LCR Nadele 19N

CDGV124832 • LCR19N • 01/27/2003

CE	BW	WW	YW	MK	TM	CED	YG	CW	REA	MB	FT
6	1.0	49	58	24	48	1	-0.23	5	0.17	-0.10	-0.07

VCR PLD VALE SMOKER 12F
 LCD LIONHEART 177L
 LCD GYPSY 177G

JWR GUNSMOKE 32Z
 SEGA HIGH CIARA 1C
 KFW LONE STAR ACTION 605B
 CVG CYPRESSVIEW YVONNE 17Y

P/E JUNE 7 TO AUGUST 6, 2013 TO SLC TOUCHDOWN 84W
 V V XCALIBRE 101X

184

BW 90
 WW 963
 YW

FEMALE • PUREBRED • RED • POLLED

VV Abigail 96A

149055 • VV96A • 02/23/2013 • BW: 90

SIRE: V V WATER LOU 61W ET

183A

FEMALE • PERCENTAGE 75 • RED • POLLED

VV Adele 179A

149158 • VV179A • 04/03/2013 • BW: 94

SIRE: V V XCELLENT JEST 72X

184A



LOT 184 LCR NADELE 19N

FEMALE • PUREBRED 94 • RED • POLLED

BKS Pld Cadillac Landa 30N

CDGV98734 • BKS30N • 01/31/2003

CE	BW	WW	YW	MK	TM	CED	YG	CW	REA	MB	FT
5	-2.5	31	42	35	51	2	-0.49	-8	0.46	-0.29	-0.11

SINK POLLED GUZZLER D82
 MGF GUZZY'S BIG GULP 1H ET
 SLC FELISHA 51B

HCG TRIANGLE T MR 77E
 HCG TRIANGLE T GAIL 20G
 HCG TRIANGLE T ECTESSA 32Z

HHF W21 POLLED PATRIOT
 JHG MISS KAISER 082Z
 PCCI MR CENTENNIAL 083Z
 SLC MISS ACES 114Z
 HCG TRIANGLE T POLL MASTER 8Z
 HCG TRIANGLE T MISS 57T
 MDL MONTANA FLOTO 607U
 GUY LC ECTESSA 10K

P/E MAY 4 TO JULY 25, 2013 TO V V YOU JEST 11Y ET,
 V V YOUR JOKING RIGHT 35Y ET, BLB PLD REVOLVER 12Z

Daughters sell as lots 16 and 38.

BW 83
 WW 466
 YW 691



FEMALE • PUREBRED 94 • RED • POLLED

VV Abbie 106A

CDGV149153 • VV106A • 02/28/2013

CE	BW	WW	YW	MK	TM	CED	YG	CW	REA	MB	FT
8	3.0	68	99	31	65	7	-0.20	31	0.34	-0.29	-0.08

JHL LCHMN CHRONICLE 8011H
 FRL FIR RIVER RANALDO 38U
 FRL FIR RIVER CHERRY 73R

SBR 2085L MARCUS P13
 VV TRUDY 95T
 SLC SADIE 47P

TLR COCOA 35C
 LCHMN OMC GV F8038
 JCGR BAR GT LOUIE 2J
 CCF GREAT LAKES KATIE 42K
 BTI 2085L
 DTJ MORGAN STAR 42M
 SLC FREEDOM 178F ET
 SLC SADIE 231M

V V 106A embraces two of the greatest pedigrees that were used in the V & V breeding program. Her sire, FRL 38U, sired many great ones including the Reserve National Champion Bull in 2012 at Agribition and her dam was one of the greatest donor cows ever. 106A is V V Trudy 95T's last natural calf. She has pedigree and predictability to burn.

BW 96
 WW
 YW



REF VV TRUDY 95T - DAM OF LOTS 186, 187 & 189

BULL • PUREBRED 94 • RED • POLLED

VV Jester 10A ET

CDGV149195 • VV10A • 02/04/2013

CE	BW	WW	YW	MK	TM	CED	YG	CW	REA	MB	FT
8	3.0	72	101	31	67	9	-0.13	33	0.19	-0.30	-0.07

VV BOODOM 5M
 VV RENASSANCE JESTER 79R
 LTC RIDGE STAR PLD JEST 280J

SBR 2085L MARCUS P13
 VV TRUDY 95T
 SLC SADIE 47P

SLC FREEDOM 178F ET
 JBM ALVA 23K
 ATC GOLD STAR POLLED 5D
 LTC RIDGE STAR 67F
 BTI 2085L
 DTJ MORGAN STAR 42M
 SLC FREEDOM 178F ET
 SLC SADIE 231M

V V 10A ET is a thick high performing embryo transplant calf sired by Renasance Jester and out of the great donor cow V V Trudy 95T. She was Heifer Calf Champion at Agribition. Check out all the siblings in the sale.

BW 92
 WW
 YW

BULL • PUREBRED 94 • RED • POLLED

VV Adicuss 22A ET

CDGV149197 • VV22A • 02/09/2013

CE	BW	WW	YW	MK	TM	CED	YG	CW	REA	MB	FT
9	1.0	53	68	29	56	6	-0.35	11	0.55	-0.31	-0.08

GKT BUD 11G
 JCGR BAR GT LOUIE 2J
 049C

AR COLE 26M
 SLC LADY IN RED 33P
 AR RED LADY 38H

GKT BOO BOO 155E
 GKT KATIE
 PGRS SHINING SPIRIT
 041Z
 FLGY 1110A
 AR BIG LADY 6K
 SLC EMPIRE 41E
 AR CONTENTED LADY 35E

V V 22A ET is the result of a tried and proven genetic mating at V & V Farms. The Louie sons have been widely accepted throughout the industry. His dam, SLC Lady in Red 33P, always produced both bull and heifer calves that are sought for their structural correctness, eye appeal and awesome style.

BW 96
 WW
 YW

BULL • PUREBRED 94 • RED • POLLED

VV Atomic 214A ET

CDGV149196 • VV214A • 02/02/2013

CE	BW	WW	YW	MK	TM	CED	YG	CW	REA	MB	FT
10	2.0	70	107	32	67	9	-0.16	36	0.29	-0.33	-0.07

DEG PESO 286P
 VV ULTRAMATIC 144U
 DTJ ANITA KAYLA R103

SBR 2085L MARCUS P13
 VV TRUDY 95T
 SLC SADIE 47P

DEG MONAHAN 293M
 DEG JYSSICA 286J
 EGL EL DORADO L058
 DTJ PLD ANITA KAYLA 18K ET
 BTI 2085L
 DTJ MORGAN STAR 42M
 SLC FREEDOM 178F ET
 SLC SADIE 231M

This thick made high performing bull calf is what the bull buyers expect to see at V & V's spring sale. This pedigree exudes the best genetics available with the excellent maternal values of V V Trudy 95T.

BW 96
 WW
 YW



REF SLC LADY IN RED 33P - DAM OF LOT 188

FEMALE • PERCENTAGE 75 • RED • POLLED

VV Adorna 117A

CDGV149154 • VV117A • 03/02/2013

CE	BW	WW	YW	MK	TM	CED	YG	CW	REA	MB	FT
6	1.3	54	63	26	53	6	-0.22	7	0.22	-0.14	-0.06

SLC TYE 476T ET
 VV X-MAN 182X

SLC MASTER PLAN 134N
 SFL SLC MS CENTENNIAL 188C

DTJ FIRE POWER JERAME 12J ET
 SBR MISS LIBIA P25
 HDS LIBIA 106L

NGAC REMITALL FIRE POWER 101F
 BB MISS 61Y
 DTJ STUBBY'S BLACK PRIDE 15G
 DTJ MISS WIN ME H48 ET

V V 117A is a daughter of one of the good old cows that can always be relied on each and every year. Consistency is a huge plus.

BW
 WW
 YW 88

190

FEMALE • PUREBRED 94 • RED • POLLED

VV Princess Ariel 138A

CDGV149155 • VV138A • 03/15/2013

CE	BW	WW	YW	MK	TM	CED	YG	CW	REA	MB	FT
6	3.2	76	106	25	63	7	-0.20	36	0.36	-0.31	-0.08

SLC TOUCHDOWN 71T
 SLC TOUCHDOWN 138X
 SLC ANITA 122R

SLC JAGERMEISTER 40R
 SLC FREE EMPRESS 32H
 VV NORBERT 37N
 SLC ANITA 106L ET
 GKT BUD 11G
 049C
 SLC FREEDOM 178F ET
 VV KATHLEEN 92K

JCGR BAR GT LOUIE 2J
 VV PHANTOM PRINCESS 99P
 VV MAVIS 3M

138A is a daughter of V V 99P female, a brood cow whose calves have always sold at the top of the sales.

BW
 WW
 YW 94

191



BULL • PUREBRED 94 • BLACK • POLLED

FRL Fir River Big 'N' Rich 438Y

CDGV144042 • FRL438Y • 01/24/2011

CE	BW	WW	YW	MK	TM	CED	YG	CW	REA	MB	FT
9	1.9	73	110	22	59	10	-0.13	38	0.33	-0.25	-0.06

XXB TITUS 880K
 XXB BIG 'N' RICH 911P ET
 EGL G565

SLC FREEDOM 178F ET
 FRL FIR RIVER SURI 46S
 TSCC TWIN STAR NARITA 437N

MRCO NEW DIRECTION 905J
 DFW MISS ECHO J880
 EVE MR BEAU JANGLES 308B
 EGL D594
 VAA LEACHMAN NEW DAY 205B
 BB MISS 61Y
 KFW POLLED DELETOR 32D
 TSCC TWIN STAR HOLLY 427H ET

FRL Fir River Big 'N' Rich 438Y is the black herd sire that V & V purchased at the Saskatoon Sale in 2012 for \$14,000. FRL 438Y is a long, deep, excellent haired bull. His dam is none other than FRL Fir River Suri 46S, the dam of the \$30,000 heifer calf - FRL Fir River Zahara 5U.

There is loads of power and performance in this pedigree. He was used at Stone Gate Farm this past breeding season.

BW 95
 WW 795
 YW 1515

192



LOT 192 FRL FIR RIVER BIG 'N' RICH 438Y



BULL • PUREBRED 94 • RED • POLLED

SLC Touchdown 66W

CDGV136013 • SLC66W • 04/14/2009

CE	BW	WW	YW	MK	TM	CED	YG	CW	REA	MB	FT
10	-1.9	43	62	40	62	8	-0.31	4	0.27	-0.31	-0.09

CES DECKA PRECISION 144P
 CES DECKA OUTBACK 75S
 CES DECKA HARPER 150L

ARN SIR ARNOLD K114
 HL PLD MISS STALLONE 2R
 DVE DAVIDSON MS STALLONE 88H

CES DECKA QUEST 54M
 CES DECKA CRIMSON TIDE 31K
 WGG FLASHPOINT 91F
 CES DECKA HARPER 63H
 JRI PLD GRAND PRIX ET
 ARN MISS ARNOLD F114
 MCFG MR MCF JEFFERSON ET
 HAG MISS STALLONE 113D

BW	74
WW	753
YW	1324



REF SLC TOUCHDOWN 66W

BULL • PUREBRED 94 • RED • POLLED

SLC Touchdown 82W

CDGV136016 • SLC82W • 04/17/2009

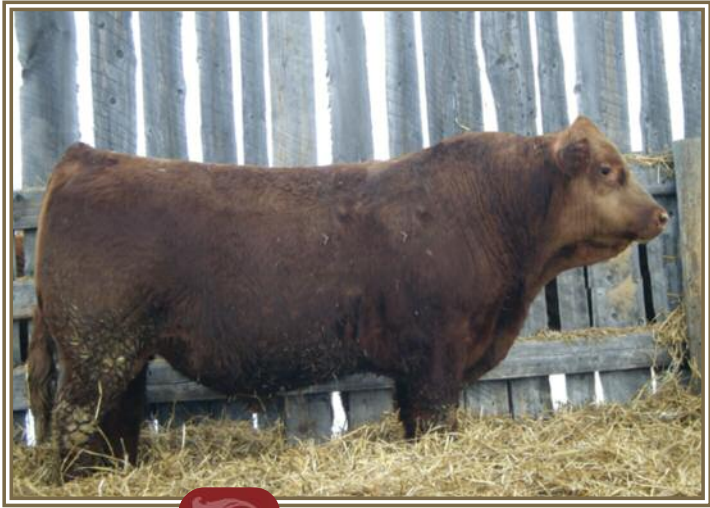
CE	BW	WW	YW	MK	TM	CED	YG	CW	REA	MB	FT
10	0.1	68	80	22	55	10	-0.24	16	0.21	-0.25	-0.08

SLC JAGERMEISTER 40R
 SLC TOUCHDOWN 71T
 SLC FREE EMPRESS 32H

XZR C342 (STUBBY)
 SLC MISS BLACK LASS 120H
 SLC BLACK LASS 98D

TJB JAGERMEISTER 229M - ET
 SFL SLC CHOTEAU SUE 95H
 SLC FREEDOM 178F ET
 SLC 218F
 KCF BENNETT HORIZON 103X
 XZR 113A
 XZR 165A
 SLC BRADY'S GAL 41A

BW	87
WW	785
YW	1311



REF SLC TOUCHDOWN 82W

BULL • PUREBRED 94 • RED • POLLED

SLC Touchdown 84W

CDGV136032 • SLC84W • 04/17/2009

CE	BW	WW	YW	MK	TM	CED	YG	CW	REA	MB	FT
6	2.3	69	83	24	58	8	-0.24	21	0.26	-0.25	-0.08

SLC JAGERMEISTER 40R
 SLC TOUCHDOWN 71T
 SLC FREE EMPRESS 32H

XZR C342 (STUBBY)
 SLC SADIE 231M
 KDA SADIE 24Z

TJB JAGERMEISTER 229M - ET
 SFL SLC CHOTEAU SUE 95H
 SLC FREEDOM 178F ET
 SLC 218F
 KCF BENNETT HORIZON 103X
 XZR 113A
 MSH ALYDAR X41 ET
 LDB 191P

BW	86
WW	748
YW	1222



REF SLC TOUCHDOWN 84W

FEMALE • PUREBRED 94 • RED • POLLED

VV Xtra Cool 10X

CDGV136276 • VV10X • 01/25/2010

CE	BW	WW	YW	MK	TM	CED	YG	CW	REA	MB	FT
6	1.5	76	109	29	67	10	-0.04	36	0.08	-0.11	-0.05

JDPD ROLEX 151M
 JDPD ASTRO 407S
 HAD PRINCESS OF ALOT 407P

ATC GOLD STAR POLLED 5D
 VV UNBEATABLE NATASHA 37U
 VV NATASHA 5N

HAD SLEEP TIGHT ET
 VTG VISTA MS FREEDOM 0151K
 HAD LANCELOT 795L
 HAD 140L
 CZM FAIRYVALE XCELERATOR 1X
 ATC GOLD STAR ET 92A
 JCGR BAR GT ICON 1115F
 MSW MWH HALEY 26E

BW	80
WW	625
YW	1111

BULL • PUREBRED 94 • RED • POLLED

STON Statesman 9Y

CDGV142843 • STON9Y • 02/01/2011

CE	BW	WW	YW	MK	TM	CED	YG	CW	REA	MB	FT
7	2.5	69	99	34	69	6	-0.19	32	0.28	-0.37	-0.08

EV HUMDINGER 119M
 STON WINSTON 6W
 STON MS CERTAIN GLOW 2T ET

DEG PESO 286P
 VV MISS MOLLY 118S
 TIP MISS MOLLY 44M

WGG HUMBUG 72H
 WGG JANET 75J
 NGAC REMITALL PLD EXCEL 232E
 JRI MS CERTAIN GLOW 253M63
 DEG MONAHAN 293M
 DEG JYSSICA 286J
 JRI PLD FREE AGENT 125J3
 TIP MISS KOOL 53K

BW 90
 WW 815
 YW



REF STON STATESMAN 9Y

BULL • PUREBRED 94 • RED • POLLED

VS ZZ Top 6Z

CDGV146882 • VS6Z • 01/23/2012

CE	BW	WW	YW	MK	TM	CED	YG	CW	REA	MB	FT
7	1.8	64	85	30	62	9	-0.18	23	0.33	-0.23	-0.05

SLC TYE 476T ET
 VV XTRA TIME 214X
 SPG PLD SUNNY PLAIN NIKKI 17

JDPD ASTRO 407S
 VV XACT FIGURE 14X
 VV REBELLO 48S

SLC MASTER PLAN 134N
 SFL SLC MS CENTENNIAL 188C
 SPG JUDGE 101J
 SPG HAPPY DAY 6H
 JDPD ROLEX 151M
 HAD PRINCESS OF ALOT 407P
 JCGR BAR GT LOUIE 2J
 SLC REBELLO 14P

BW 87
 WW 715
 YW 1240



REF VS ZZ TOP 6Z

BULL • PUREBRED 94 • RED • POLLED

VV You Jest 11Y ET

CDGV143509 • VV11Y • 01/30/2011

CE	BW	WW	YW	MK	TM	CED	YG	CW	REA	MB	FT
8	2.9	71	101	31	67	8	-0.12	33	0.19	-0.29	-0.07

VV BOODOM 5M
 VV RENASANCE JESTER 79R
 LTC RIDGE STAR PLD JEST 280J

SBR 2085L MARCUS P13
 VV TRUDY 95T
 SLC SADIE 47P

SLC FREEDOM 178F ET
 JBM ALVA 23K
 ATC GOLD STAR POLLED 5D
 LTC RIDGE STAR 67F
 BTI 2085L
 DTJ MORGAN STAR 42M
 SLC FREEDOM 178F ET
 SLC SADIE 231M

BW 98
 WW 563
 YW 1344

BULL • PUREBRED 94 • RED • POLLED

VV Z-Long Neck Bottle 109Z

CDGV147164 • VV109Z • 02/24/2012

CE	BW	WW	YW	MK	TM	CED	YG	CW	REA	MB	FT
6	1.0	53	73	31	57	8	-0.27	14	0.27	-0.27	-0.09

JHL LCHMN CHRONICLE 8011H
 FRL FIR RIVER RANALDO 38U
 FRL FIR RIVER CHERRY 73R

DTJ MR JERAME MASON 503M
 VV REDNECK SWEETHEART 101R
 GCC RED SUGAR 59K

TLR COCOA 35C
 LCHMN OMC GV F8038
 JCGR BAR GT LOUIE 2J
 CCF GREAT LAKES KATIE 42K
 SLC FREEDOM 178F ET
 SLC 67E ET
 GCC REDNECK 2F
 DVE DAVIDSON MISS SUGAR 50H

BW 92
 WW 701
 YW 1234

BULL • PUREBRED 94 • RED • POLLED

VV Your Joking Right 35Y ET

CDGV143669 • VV35Y • 01/31/2011

CE	BW	WW	YW	MK	TM	CED	YG	CW	REA	MB	FT
8	2.9	71	101	31	67	8	-0.12	33	0.19	-0.29	-0.07

VV BOODOM 5M
 VV RENASANCE JESTER 79R
 LTC RIDGE STAR PLD JEST 280J

SBR 2085L MARCUS P13
 VV TRUDY 95T
 SLC SADIE 47P

SLC FREEDOM 178F ET
 JBM ALVA 23K
 ATC GOLD STAR POLLED 5D
 LTC RIDGE STAR 67F
 BTI 2085L
 DTJ MORGAN STAR 42M
 SLC FREEDOM 178F ET
 SLC SADIE 231M

BW 98
 WW 576
 YW 1259

BULL • PUREBRED 94 • RED • POLLED

BLB Goodview Pld Revolver 12Z

CDGV147058 • BLB12Z • 01/26/2012

CE	BW	WW	YW	MK	TM	CED	YG	CW	REA	MB	FT
2	4.0	65	85	33	65	4	-0.19	25	0.17	-0.27	-0.08

HHF W21 POLLED PATRIOT
 FRL FIR RIVER LEGACY 64R ET
 SFL SLC MS CENTENNIAL 188C

LTC RIDGE STAR HOLMAN 123H
 BBB BROOK MAUREEN 107M
 BBB BROOK HOPE 186H

ATM TEJAS ROLLS ROYCH 868
 HHF RED GIRL T23 ET
 OAR MO-ROC-GELB 92Y
 SFL SCOTSWOOD SUE 12S
 ATC GOLD STAR POLLED 5D
 RTN MISS UNA 38U
 MGF MIDNIGHT'S MAGIC 17E
 BBB CECILIA 275F

BW 90
 WW 703
 YW 1343







108 Flett Drive, Airdrie, Alberta T4B 1N2
Phone: 403/948-3520 Fax: 403/948-2917
www.donsavageauctions.com
email: don@donsavageauctions.com



TIME SENSITIVE MATERIAL

V&V FARMS
SHARE THE HERD
Gallowich Sale
NOVEMBER 23, 2013

11:00 AM MST • AT THE FARM • REDCLIFF, ALBERTA