



Twin Bridge Farms

6th Annual Gelbvieh Bull & Female Sale

With guest
Keriness Cattle Company

Monday, March 13, 2017

1:00 p.m.

Silver Sage Community Corral

Brooks, AB



Welcome to the 6th Annual Twin Bridge Farms Gelbvieh Bull and Female Sale with our great friends from Keriness Cattle Company, The Ness Family.

Like years past, we are extremely proud of our offering and feel these bulls are a great opportunity to enhance the breeding potential of your herd and your bottom line. The cattle industry has continued to be successful despite a levelling off in terms of price point. Just like you, our bread and butter is our cattle and as a result, you'll notice we are not ones to chase the latest trends. We believe firmly in staying the course! You won't see drastic changes in the product we offer to you because we've all seen time and again that consistency is key. We will continue to use time honoured genetics while combining new ones which compliment our existing base.

The bulls offered on March 13 have those genetics that will move your operation forward. There are performance bulls to raise those heavy weight steers in the fall, low birth weight bulls to make calving season stress free and of course all of them will produce the industry leading females the Gelbvieh breed is known for.

The Twin Bridge herd has been developed over the last 15 plus years by selecting solid foundation females and using the best herd and AI sires we can source. We also use embryo transplant to increase the influence of some of our top females. Our focus has always been on producing cattle that meet the demands at every step of the beef supply chain. This means cattle have to reach our high expectations of performance, calving ease, maternal traits, conformation and above all else, soundness. We develop our bulls in a 5 acre area giving them lots of room to stay active for breeding. They are hand fed a low starch ration and free choice hay to promote soundness and longevity. All our cattle are on a full herd health program and have been vaccinated for foot rot. To help make your selection easier we have done genetic testing for polled and colour traits where suitable and have DNA parent verified and leptin tested every bull. For more information about leptin, contact my Aaron. Be sure to check out our website tbfarms.ca for more pedigree pictures and videos of our sale lots.



All cattle selling will be vet inspected and the bulls will be semen tested. Both the Ness' and ourselves are willing to keep your purchases until April 15 and deliver them within 200 miles free of charge. New this year, the sale will be broadcast live online with LiveAuctions. Shari Leachman is a great friend and resource with this marketing tool. We would of course prefer to host you in person on sale day but encourage you to utilize this tool if that is not possible. If you are unable to attend the sale or have any questions ahead of time please contact us, our sale staff or our guest consignors and we will do everything we can to assist you in finding your next herd bull.

Don't forget to come early for lunch and stay after the sale for our hospitality. Hope to see you all there!

Aaron Birch



Don Savage Auctions
 108 Flett Drive, Airdrie, Alberta T4B 1N2
 Phone: 403/948-3520 Fax: 403/948-2917
 Website: www.donsavageauctions.com
 Email: don@donsavageauctions.com

Welcome to the 6th Annual Twin Bridge Farms and Guests Bull and Female Sale.



Although the beef market has fluctuated since early 2016, the common denominator is that good cattle will still bring you a premium at the market. Pounds of beef gained will always improve your profit margin. The best way to attain those extra pounds of beef is by adding the Gelbvieh influence and building a solid foundation in your cowherd. Twin Bridge Farms continues to search out the best sires and replacement females to build their breeding program. The bulls in their lineup this year reflect the new performance sires that they have included to continue to improve. They had another terrific year showing at Farmfair and Agribition with championship awards and high selling females at the Gelbvieh events. The Reserve National Champion Bull will headline this already power set of bulls that will be warranting your attention. It is no accident that cattlemen are paying attention to the success of the Twin Bridge herd.

The guest consignor is Keriness Cattle Company, Airdrie, AB. Look for exciting young herd sire prospects from this well established breeding program. Joe and Kert look forward to discussing their sale offering with you.

The bulls from these herds are stout, thick, good haired prospects that will add calving ease, performance and maternal traits in your cowherd.

If you have any questions about the cattle please contact the consignors or myself. If you are interested in purchasing next herd sires on March 13th, but are unable to be with us on sale day, please contact me at 403.803.4434.

Yours truly,
Don Savage

Twin Bridge Farms & Guest 6th Annual Gelbvieh Bull & Female Sale

Monday, March 13, 2017 1:00 pm
Silver Sage Community Corral ~ Brooks, Alberta
Please join us for lunch at noon

Polled ~ Red and Black
All bulls will be semen tested

Sale Staff

| | |
|-------------------------|--------------|
| Don Savage, Auctioneer | 403 948 3520 |
| | 403 803 4434 |
| Rod McLeod, Ringman | 403 540 7986 |
| Grant Ellefson, Ringman | 403 501 9707 |

Sale Day Phones

| | |
|-------------|--------------|
| Aaron Birch | 403 485 5518 |
| Ron Birch | 403 485 5512 |
| Joe Ness | 403 852 7332 |
| Joe Barnett | 403 465 2805 |

Twin Bridge Farms Ltd.

The Birch Family

Ron & Carol, Aaron & Joe,

Ross, Gail & Owen Birch

Box 192, Lomond, AB T0L 1G0

403 792 2123

www.tbfarms.ca

Aaron - 403 485 5518 ~ aaron@tbfarms.ca

All Twin Bridge
bulls can be
viewed through
video at tbfarms.ca

Keriness Cattle Company Ltd.

Kert & Joe Ness

Box 13, Site 4, RR #1 Airdrie, AB T4B 2A3

Kert ~ 403 860 4634

Joe ~ 403 852 7332



Don Savage Auctions
108 Flett Drive, Airdrie, Alberta T4B 1N2
Phone: 403/948-3520 Fax: 403/948-2917
www.donsavageauctions.com
Email: don@donsavageauctions.com

LIVE ON THE INTERNET. LIVE AUDIO. LIVE VIDEO. BIDDING

LiveAuctions TV

We are now online! Contact Aaron or Shari Leachman
at 306 903 7289

Terms and Conditions

Terms of Sale: Cash or cheque at par, payable to the clerks of the sale on sale day. US Funds will be accepted at the current rate of exchange. No release will be given until satisfactory settlement has been made. Full payment shall constitute a final sale and then registration papers will be transferred.

Health: All cattle meet Canadian Health standards. Foreign buyers are responsible for knowing health requirements of their location.

Guarantee: All cattle are guaranteed under the terms and conditions as recommended by the Canadian Gelbvieh Association. For a copy of this guarantee contact the seller or the Canadian Gelbvieh Association office.

Mail and Phone Bids: Should you be unable to attend the sale, any member of the Sale Staff or the consignors will assist you to the greatest extent possible.

Insurance: Agents will be available at the sale. Ownership commences as soon as the animal is sold.

Although every precaution will be taken to protect the safety and comfort of the buyers neither the Sales Management nor the consignors assume any responsibility in these matters and disclaims liability, legal or otherwise, in the event of accident or loss of property.



**REF
SIRE**

**Homozygous Polled Purebred
FLAD FLADELAND DJW ROCKM SOCKM**

FLAD 202A April 10, 2013
Act BW 88 Adj WW 835 Adj YW 1246

BLB GOODVIEW PLD WROCKER 20W
Sire: BLB GOODVIEW PLD THE ROCK 7Y
BLB GOODVIEW PLD MAUREEN ET

WRS SILENT STAN 20S
Dam: FLAD DJW WINTER 202W
FLAD FLADELAND TIFFANY 2T

FLAD DJW WINTER 202W
Dam with Rock M Sock M at side



ROCKM SOCKM was the the Canadian Futurity Champion in 2013 and we knew then he'd play a major role in our AI program. We loved the softness, volume and rib shape he provides with a super sound food and skeletal structure. We also loved his dam whom he stood beside at Agribition. She is our idea of a model Gelbvieh female with the foot structure and udder design we strive to produce. To say RockM SockM met our expectations would be an understatement. With these 4 sons and a heifer in the replacement pen, he saw heavier use in our next AI season. Sire of lots 1 to 4.

1

**Homozygous Polled Purebred
AWB BIRCH'S THE BOXER 21D**

AWB 21D January 21, 2016 Leptin CT
Act BW 98 Adj WW 883 Adj YW 1364

Sire: FLAD FLADELAND DJW ROCK M SOCK M

VV YOICKS 107Y
Dam: AWB BIRCH'S MACY 37A
JC PEMBINA MACY 623M

CE 6 BW 3.7 WW 66 YW 97 MK 32 TM 65 MCE 5



Here he is, folks! The 2016 Reserve National Champion Bull ~ AWB BIRCH'S THE BOXER 21D! We knew from the day he was born he was special. He has carried a striking presence about him from the get go; his length of spine and overall design are immediately eye catching. The Boxer is extremely clean made, totally ideal in his foot structure, exceptionally haired and has unbelievable extension through his neck and skull. He is supple in his movement, has exceptional testicular growth and offers an extremely balanced EPD profile. He has also tested diluter free! Great bulls are backed by great dams and The Boxer's dam is absolutely stunning! She will enter our flush program very soon and comes from generations of powerful females. This cow family also produced our herd sire, Ricco whose presence is very notable in several lots in this offering. The Boxer comfortably ranks as one of the greatest individuals we have ever produced and has all the capability to be a breed and industry leading sire. If he were not closely related to a large portion of our herd, he would not be offered to you here. We would be happy to work with The Boxer's new owners in managing his show career should they be interested. Selling Full Possession and 50% semen interest.



AWB BIRCH'S MACY 37A - Dam



2016 Reserve National Champion Bull



2

**Homozygous Polled Purebred
AWB BIRCH'S KNOCK OUT 25D**

AWB 25D January 23, 2016 Leptin CT
Act BW 89 Adj WW 741 Adj YW 1279

Sire: FLAD FLADELAND DJW ROCK M SOCK M

VV YOICKS 107Y
Dam: AWB BIRCH'S BOE 189A
GCC BOE 88T

CE 7 BW 2.8 WW 67 YW 104 MK 35 TM 69 MCE 6



AWB BIRCH'S BOE 189A
Dam of Lot 2

Knock Out is the big time when it comes to all things we aim to produce. Soggy, massive middled, hairy, rugged where it counts and homozygous polled to boot! He was the third member of our Medicine Hat pen prior to its cancellation so he is halter broke. Knock Out's dam is quickly becoming an elite female for us. Her first son was our high seller last year to Hawkeye Ranching and we showed him successfully though the fall. Unbelievable potential here! He's a total knock out!



3

**Polled/Scurred Purebred
AWB BIRCH'S ROUND HOUSE 37D**

AWB 37D January 26, 2016 Leptin CT
Act BW 93 Adj WW 746 Adj YW 1131

Sire: FLAD FLADELAND DJW ROCK M SOCK M

GCC FREE GENT 106N
Dam: GCC BOE 88T
GCC DOUBLE BOE 148R

CE 7 BW 2.9 WW 66 YW 88 MK 33 TM 66 MCE 5



Dam of Lot 3
Granddam of Lot 2 and 21

Round House is another Rock M Sock M son and is very typically in his type with plenty of mass and stoutness. He is a maternal brother to the dams of lots 2 & 21 and a brother sold last year to Lomond Grazing. Round House offers significant maternal ability combined with big time beef bull character. With the matriarch Boe 88T as his dam, you will want to keep his daughters.



4

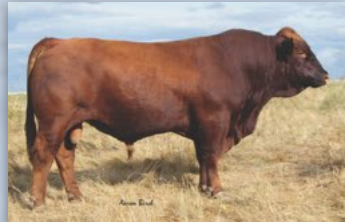
**Polled Purebred
SA BIRCH'S LEFT HOOK 28D**

SA 28D January 24, 2016 Leptin CC
Act BW 91 Adj WW 702 Adj YW 1138

Sire: FLAD FLADELAND DJW ROCK M SOCK M

VV TIREE 150T
Dam: SA BIRCH'S GYDA 7X
JBM GYDA 58U

CE 9 BW 2.3 WW 63 YW 89 MK 32 TM 64 MCE 7



VV TIREE 150T
Grandsire to many lots

Left Hook is the fourth of our Rock M Sock M sons and is another elite individual. Much like his brothers, he's massive in his design, super sound on the move and yet really attractive. Bulls with such a moderate birthweight rarely carry this much mass and muscle shape. His dam is one of many Tiree daughters in the herd and she has been a very consistent producer. Left Hook has all the goods!



This is the first group of Revolver sons to sell and they've been much awaited. Revolver was raised here and had a very successful show career as a calf, highlighted by being Reserve Sr. Bull Calf at Agribition. His first daughters look outstanding including the Farmfair and Agribition Heifer Calf Champion who now resides in North Dakota. For such a powerful bull, he calves extremely well with moderate birth weight values and significant maternal value.

**REF
SIRE**

**Homozygous Polled Purebred
SA BIRCH'S REVOLVER 3B**

SA 3B January 20, 2014
Act BW 88 Adj WW 729 Adj YW 1257

VV WHO'S YOUR DADDY 39W
Sire: VV YOICKS 107Y
SLC REBELLO 14P

SLC FREEDOM 178F ET
Dam: SA BIRCH'S MARION 4S
SA BIRCH'S MARION 27N



SA BIRCH'S REVOLVER 3B



SA BIRCH'S MARION 4S
Dam of Revolver



We love it when we can combine our most predictable cow families. The sons of the Beryl cow family are often the best in the pen, including three in this year's sale, and have been high sellers in past years. Magnum is a long, thick, stylish bull that caught our attention at a young age despite being a month younger than most of the bulls. His dam and granddam both calved in the first cycle again this year and their calves will once again be standouts. His two year old maternal sister raised one of our top replacement heifers this last year.

5

**Polled 88%
SA BIRCH'S MAGNUM 166D**

SA 166D February 29, 2016 Leptin CT
Act BW 95 Adj WW 756 Adj YW 1108

Sire: SA BIRCH'S REVOLVER 3B

OWEN BIRCH'S RICCO 154W
Dam: SA BIRCH'S BERYL 98Z
SA BIRCH'S BERYL 21U

CE 8 BW 3.5 WW 73 YW 100 MK 35 TM 71 MCE 7



SA BIRCH'S BERYL 7B
Two-year old maternal sister



AWB BIRCH'S NATALIE 1D
Revolver daughter
Farmfair and Agribition Heifer Calf Champion
Sold to Cranview Gelbvieh, North Dakota



Iron Sights is the son of one of our favourite females, Rainbow 30U. She has become one of our rock solid producers and has made her way into the donor pen. Her first embryos calves look very exciting and could headline this sale next year. A daughter was the 2014 Gelbvieh Sweetheart Champion and two of her sons have went to purebred herds; Iron Man to Nelson Gelbvieh and Ironclad to Nish Gelbvieh. This bull has a lot of potential just like his older siblings.

6

**Homozygous Polled Purebred
AWB BIRCH'S IRON SIGHTS 121D**

AWB 121D February 12, 2016 Leptin CT
Act BW 90 Adj WW 592 Adj YW 1079

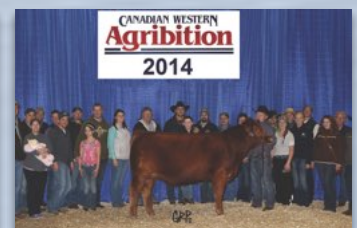
Sire: SA BIRCH'S REVOLVER 3B

ATC GOLD STAR POLLED 5D
Dam: SA BIRCH'S RAINBOW 30U
TSSC TWIN STAR RAINBOW 902R

CE 9 BW 1.0 WW 68 YW 102 MK 28 TM 62 MCE 8



SA BIRCH'S RAINBOW 30U
Dam of Lot 6



AWB BIRCH'S RAINBOW 113A
Maternal Sister to lot 6



SA BIRCH'S WRUFFLE 2B
Maternal sister to Lot 7

SA BIRCH'S CENTER ICE 139C
Maternal brother to Lot 7



VV WRUFFLE ME 18W
Granddam of Lot 7, 10 & 22, 23, 24, 25

Sire: SA BIRCH'S REVOLVER 3B

OWEN BIRCH'S RICCO 154W

Dam: SA BIRCH'S WRUFFLE 59Z
VV WRUFFLE ME 18W

CE 10 BW 2.5 WW 74 YW 107 MK 35 TM 72 MCE 8

7

Homozygous Polled Purebred
SA BIRCH'S RAPID FIRE 98D

SA 98D February 6, 2016 Leptin TT
Act BW 96 Adj WW 768 Adj YW 1255

Producing elite offspring is becoming a habit for Wruffle 59Z! Her first daughter, Wruffle 2B, had an amazing show career including 2014 Heifer Calf Champion & Reserve Grand Champion Female at Farmfair, 2015 Gelbvieh First Lady Classic Champion and 2015 Junior Champion Female at Agribition. Her next calf, Centre Ice, was part of our show string and was 2nd in his class at both Billings and Farmfair and then lead off our bull sale last year selling to Thackeray Land & Cattle. Rapid Fire is her third ringer and is incredibly thick, long bodied and eye appealing. These traits combined with his dark red colour and the fact he is homo polled make him a real herd sire candidate. He is destined for great things just like his older brother and sister and we are very excited to see what his future has in store.



FLAD LEXXUS 128X
Dam of Lot 8



AWB BIRCH'S COLD WAR 57D ET
Flushmate to lot 8
Our newest herdsire



OWEN BIRCH'S RICCO 154W
Sire of Lot 8

8

Homozygous Polled Purebred
AWB BIRCH'S CEASE FIRE 86D ET

AWB 86D February 3, 2016 Leptin CT
Act BW ET Adj WW 774 Adj YW 1200

VV TIREE 150T
Sire: OWEN BIRCH'S RICCO 154W
AWB BIRCH'S MACY 39S

WRS SILENT STAN 20S
Dam: FLAD LEXXUS 128X
FLF PEACHES 112P

CE 8 BW 3.8 WW 73 YW 97 MK 34 TM 71 MCE 7

Cease Fire may be one of the stoutest, most massive middled bulls we've ever produced and he just happens to be a flushmate to the Farmfair and Agribition Reserve Bull Calf Champion, AWB Birch's Cold War 57D ET who will be our newest herdsire. The mating between Ricco and Lexus has proven to be totally ideal when it comes to producing females as well. One of our top B aged females is a full sister and 2 other sisters resulted from this flush including our Wishlist heifer calf selling to Keriness Cattle and one we've made "untouchable" for our own herd. A maternal brother also sold in a previous sale to Rick & Bryce Strate. Their dam, Lexus, is undoubtedly the most powerful female we own and has one of the most textbook udders you'll ever see. Cease Fire has major breeder potential and, we believe, offers an abundance of necessary traits to the Gelbvieh breed. If the consistency of this flush is any indication, Cease Fire should produce very consistent, stand out offspring. If born through a natural mating, we would expect he would have weighed 90-95lbs at birth.



Explosive is another bull who stands in his own sire group this year. Exposure progeny are no strangers to anyone who follows the genetics of our herd and his daughters are now in the prime of their life being exceptional mama cows. Mothered by a really attractive two-year old Yoicks daughter, Explosive started at just 86 pounds before keeping true to his name and exploding to 760 pounds at weaning. As an added bonus he is homozygous for polled and Leptin. Explosive is an extremely complete individual who is wide based and has a massive top and loin structure.

9

Homozygous Polled 88%
SA BIRCH'S EXPLOSIVE 5D

SA 5D January 13, 2016 Leptin TT
Act BW 86 Adj WW 761 Adj YW 1291

DRJ FULL EXPOSURE 013N
Sire: FRL FIR RIVER EXPOSURE 8U ET
FRL FIR RIVER MERCEDES 1P

VV YOICKS 107Y
Dam: SA BIRCH'S BERYL 86B
SA BIRCH'S BERYL 3T

CE 8 BW 2.4 WW 73 YW 108 MK 35 TM 71 MCE 9



FRL FIR RIVER EXPOSURE 8U ET
Sire of Lot 9



SA BIRCH'S BERYL 86B
Dam of Lot 9



Levi is the only Wrangler son in the offering however he's certainly strong enough to stand on his own. Wrangler was one of the high selling bulls 3 years ago to V&V Farms and we retained an in herd semen interest. His daughters topped the replacement pen this year and we expect them to be among some of the greatest females we've added to our program in a number of years. The maternal strength in this pedigree is significant, particularly Marion 45U who was a donor for us prior to her untimely loss. Her past sons have sold to Circle T Gelbvieh, Hawkeye Ranch & Lou Bertschy. Levi himself is much like Wrangler; tremendously long sided, deep red and hairy. This is the type of bull who'll add big pounds to your next calf crop and fill your replacement pen with great females. If born by natural means we would have expected approximately 95lbs at birth.

10

Polled Purebred
SA BIRCH'S LEVI 58D ET

SA 58D January 30, 2016 Leptin CT
Act BW ET Adj WW 657 Adj YW 1162

VV YOICKS 107Y
Sire: SA BIRCH'S WRANGLER 58A
VV WRUFFLE ME 18W

DCSF POST ROCK TOP BRASS ET
Dam: SA BIRCH'S MARION 45U
SA BIRCH'S MARION 60R

CE 6 BW 4.6 WW 74 YW 114 MK 33 TM 70 MCE 6



SA BIRCH'S WRANGLER 58A
Sire of Lot 10



SA BIRCH'S MARION 45U
Dam of Lot 10



REF SIRE

Homozygous Polled Purebred
LCR DILLINGER 908A

LCR 908A April 27, 2013
Act BW 86 Adj WW 737 Adj YW 1092

TJB ABSOLUTE 211L ET
Sire: LCR URBAN COWBOY 638U
LCR SHERIE 638S

LCR STAR PROSPECT 155S
Dam: LCR WAYNETTE 908W
LCD NATALIE 308N

Dillinger is an off-age bull we purchased from LC Ranch as a power bull. He has grown into a robust breeding sire who becomes increasingly impressive as he matures. True to our expectations, this first calf crop is extremely long sided with ample extension throughout including nicely constructed skulls. We are fortunate to have several daughters in the replacement pen that have all the looks of great brood females. Dillinger progeny are extremely smooth in their design and will add frame and incredible hair.

11

Homozygous Polled Purebred
SA BIRCH'S CAPONE 100D

SA 100D February 7, 2016 Leptin CT
Act BW 98 Adj WW 769 Adj YW 1262

Sire: LCR DILLINGER 908A

AWB BIRCH'S CAPTAIN 10X ET
Dam: SA BIRCH'S BERYL 38A
SA BIRCH'S BERYL 74W

CE 9 BW 2.4 WW 70 YW 95 MK 35 TM 70 MCE 8



Capone has as much hair as we have ever had on a bull. He caught our eye at a young age and never slowed down. He is a rugged, soggy bull that is going to sire impressive market calves and broody females. His dam is a beautiful Captain daughter that is easily one of our top young cows. This is no surprise as she is from the Beryl cow family who continues to exceed expectations. Her son was in the first draft of bulls in last year's sale and sold to Fairhaven Farms as one of the high sellers.



SA BIRCH'S BERYL 38A
Dam of Lot 11



AWB BIRCH'S CAPTAIN 10X ET
Grandsire of Lot 11

12

Polled/Scurred Purebred
AWB BIRCH'S MOB BOSS 99D

AWB 99D February 7, 2016 Leptin CT
Act BW 83 Adj WW 675 Adj YW 1070

Sire: LCR DILLINGER 908A

VV WINTER STAR 42W
Dam: BLC ZIZI 230Z
BLC RISOTTO 230R

CE 8 BW 0.0 WW 62 YW 78 MK 35 TM 66 MCE 3



Mob Boss is a soft made, light birth weight son of a female we purchased from Beamish Land & Cattle. She has turned into a very productive young cow whose first daughter sold to MacDougall Ranch in BC last fall to further develop their young program and her second was retained in our herd. She has another daughter this year that has the looks to be the best yet. If you want to make some great females make sure to have a look at Mob Boss on sale day.



BLC ZIZI 230Z
Dam of Lot 12

13

Homozygous Polled 88%
SA BIRCH'S PACINO 148D

SA 148D February 18, 2016 Leptin CC
Act BW 90 Adj WW 689 Adj YW 1194

Sire: LCR DILLINGER 908A

FRL FIR RIVER EXPOSURE 8U ET
Dam: SA BIRCH'S VERNA 107A
SA BIRCH'S VERNA 42M

CE 5 BW 2.7 WW 70 YW 92 MK 32 TM 68 MCE 6



Pacino, like his brothers, is very well balanced in his traits and has lots of dark red hair. His dam could be the best A aged female on the farm, the type of female that makes you love checking cows. Her first son sold in last year's sale as the runner up high seller to V&V Farms. Just like his older brother this bull has plenty of length, thickness and eye appeal and has a very bright future.



SA BIRCH'S VERNA 107A
Dam of Lot 13



SA BIRCH'S TYCOON 7C
Brother to Lot 13



The influence of
SA BIRCH'S GAYLE 32N

When we think of the ideal mother cow and everything that title implies, SA Birch's Gayle 32N is usually the first cow who comes to mind. Few cows in the breed display the productivity and longevity of SA Birch's Gayle 32N, a Canadian Gelbvieh Dam of Distinction. This polled, fullblood, maternal powerhouse has 29 registered offspring and a total of 96 #1 embryos in four flushes. Embryos have been sold across Canada and to Australia. 32N offers fertility second to none! Most notable progeny from 32N include the 2015 Canadian National Champion Female, SA Birch's Gayle 48Z as well as SA Birch's Gavin 41R who was a walking herd bull at Twin Bridge for a number of years and AWB Birch's Flashback 32B ET who lead off our 2015 bull sale to Sandy Knoll Farms of Kansas and the Flashback syndicate. Now as a nearly 14 year old cow, SA Birch's Gayle 32N continues to milk from a highly functional udder and remains perfectly sound.

The seven progeny offered here are a prime example of the prowess within this female. There are three different matings including her natural calf by Dillinger, 3 sons of the #4 Gelbvieh bull in Canada, Canadian Pioneer, and 3 sons of the elite female maker himself, ATC Gold Star Polled 5D. These will be among the only fullblood bulls to sell in Canada this year and we are extremely proud to play an ongoing role in these important genetics. The influence of fullblood genetics will maximize hybrid vigour in your calf crop.

Pedigree for Lots 14, 15 & 16

HERON
Sire: **PGC CANADIAN PIONEER**
BERRY

ATC GOLD STAR HESTON 323H
Dam: **SA BIRCH'S GAYLE 32N**
ATC GOLD STAR GAYLE 299G

CE 2 BW 2.1 WW 44 YW 58 MK 34 TM 56 MCE 2

Lots 14-16 are among the oldest Gelbvieh genetics you'll ever access being sired by the #4 bull in Canada. This mating has already proven successful with AWB Birch's Flashback who led off this sale two years ago with walking rights selling to Sandy Knoll Farm in Kansas and multiple semen interest holders. A sister, Gayle 19B, was a member of our show string in 2014 and placed 2nd and 3rd in large classes; quite an accomplishment for 45 year old genetics! Because of the age of these genetics, the EPD values projected will not display the true potential however these bulls still offer all the modern necessities like calving ease, maternal performance, muscle shape and breed character. If born by natural means we would expect these bulls to have weighed approximately 90 pounds.



AWB BIRCH'S FLASHBACK 32B ET
Flushmate to lots 14, 15 and 16



AWB BIRCH'S GAYLE 19B ET
Flushmate to lots 14, 15 and 16

14

Fullblood
AWB BIRCH'S DOUBLE UP 34D ET

AWB 34D January 26, 2016 Leptin CT
Act BW ET Adj WW 652 Adj YW 1141



15

Polled Fullblood
AWB BIRCH'S DOUBLE BLIND 48D ET

AWB 48D January 27, 2016 Leptin CT
Act BW ET Adj WW 628 Adj YW 1130



16

Polled Fullblood
AWB BIRCH'S DOUBLE PLAY 77D ET

AWB 77D February 1, 2016 Leptin CT
Act BW ET Adj WW 738 Adj YW 1258





17

Polled Purebred
SA BIRCH'S DOUBLE AGENT 174D

SA 174D March 7, 2016 Leptin CC
 Act BW 86 Adj WW 721 Adj YW 1184

Sire: LCR DILLINGER 908A

ATC GOLD STAR HESTON 323H
Dam: SA BIRCH'S GAYLE 32N
 ATC GOLD STAR GAYLE 299G

CE 2 BW 2.2 WW 64 YW 84 MK 36 TM 68 MCE 6

Double Agent is 32N's natural March born calf so he is over a month younger than his counterparts. Much like the other Dillinger sons, he will only get better with time. Double Agent offers a unique combination of each of his parents; Dillinger's hair and performance and 32N's rib structure and maternal abilities.



AWB BIRCH'S GAYLE 48Z
 Maternal sister to lots 14-20



AWB BIRCH'S GAYLE 91T
 Maternal sister to lots 14-20

Pedigree for Lots 18, 19 & 20

CZM FAIRYVALE XCELERATOR 1X
Sire: ATC GOLD STAR POLLED 5D
 ATC GOLD STAR ET 92A

ATC GOLD STAR HESTON 323H
Dam: SA BIRCH'S GAYLE 32N
 ATC GOLD STAR GAYLE 299G

CE 4 BW 1.5 WW 52 YW 75 MK 30 TM 56 MCE 9

Lots 18-20 are sired by ATC Gold Star Polled 5D who we rank as one of the greatest female producers in the Gelbvieh breed. We are very proud to have one of the largest concentrations of active 5D daughters in the breed. These sons are chalked full of maternal characteristics and are a sure bet if you are interested in raising your own replacement females. You can expect their daughters to be beautifully uddered, structurally sound, and trouble free. Each of these bulls is moderate framed, clean fronted and offers adequate calving ease. If born by natural means we would anticipate 85-90 pound birthweights on these bulls.



ATC GOLD STAR POLLED 5D
 Sire of Lots 18-21



SA BIRCH'S GAVIN 41R
 Maternal brother to Lots 14-20

18

Polled Fullblood
SA BIRCH'S DOUBLE DOWN 59D ET

SA 59D January 30, 2016 Leptin TT
 Act BW ET Adj WW 654 Adj YW 1143



20

Polled Fullblood
SA BIRCH'S DOUBLE DIP 76D ET

SA 76D February 1, 2016 Leptin CT
 Act BW ET Adj WW 677 Adj YW 1032



19

Fullblood
SA BIRCH'S DOUBLE TAKE 38D ET

SA 38D January 26, 2016 Leptin CT
 Act BW ET Adj WW 621 Adj YW 1034





CZM FAIRYVALE XCELERATOR 1X
Sire: ATC GOLD STAR POLLED 5D
 ATC GOLD STAR ET 92A

VV YOICKS 107Y
Dam: AWB BIRCH'S BOE 67B
 GCC BOE 88T

CE 6 BW 2.5 WW 75 YW 110 MK 29 TM 67 MCE 7



AWB BIRCH'S BOE 67B
 Dam of Lot 21

Bohannon is another of our favourites this year and was a contender for the show string. We have such pride in his genetic makeup but also love his blood red shaggy hair, his length of spine, his beautiful two year old mama and his future breeding potential. He comes from the same cow family as lots 2&3 as well as our feature high selling bull from last year. With an extremely impressive spread from birth to yearling, Bohannon offers an elite combination of performance, calving ease and maternal fortitude. We've offered very few direct 5D sons over the years but we would comfortably say Bohannon is our favourite. He has all the goods of a breeder quality prospect and one that we will be watching closely down the road.

21

Homozygous Polled Purebred
AWB BIRCH'S BOHANNON 30D
 AWB 30D January 24, 2016 Leptin CT
 Act BW 88 Adj WW 793 Adj YW 1344

**REF
 SIRE**

Black ~ Homozygous Polled Purebred
AWB BIRCH'S BLK POWDER 37Z ET

AWB 37Z February 2, 2012
 Act BW 90 Adj WW 723 Adj YW 1353

JEB POLLED GIZMO 17Z
Sire: SPUR BERETTA 703G
 SPUR VANESSA 19E ET

GAA GARST LEACHMAN C3485
Dam: VV WRUFFLE ME 18W
 DF TRUFFLE 22T ET

Black Powder was our resident black herdsire here until the end of the past breeding season when we were faced with the reality of many daughters finding their way into the program. Powder himself was tremendously long sided, big footed and sired by a former US Futurity Champion at Denver. His dam was our pick of V&V Farms' heifer pen and she has become a donor dam and matriarch in our herd. Powder's sons are modelled quite closely after him in terms of the their overall type and kind. They are moderate at birth but do not sacrifice performance. Also like their sire their biggest strength could be their daughters. Sire of lots 22 - 25.



22

Polled Purebred
SA BIRCH'S DETONATE 198D
 SA 198D March 20, 2016 Leptin CC
 Act BW 98 Adj WW 755 Adj YW 1185

Sire: AWB BIRCH'S BLK POWDER 37Z ET

LTC RIDGE STAR HOLMAN 123H
Dam: SA BIRCH'S JAN 35T
 LTC RIDGE STAR JAN 149J

CE 5 BW 1.7 WW 59 YW 72 MK 31 TM 61 MCE 4



SA BIRCH'S JAN 35T
 Dam of Lot 22



Detonate is the youngest bull in the pen so be sure to take that into account when evaluating him sale day. His mother has been a consistent producer and at ten years old still has a perfect udder. Her outcross, all fullblood pedigree will also maximize hybrid vigour in Detonate's offspring. Outside of one daughter that sold to Keriness Cattle from this sale, we have kept every one of 35T's daughters. She also had a son that sold to Rick & Bryce Strate. Detonate will sure to be a female maker.



Powder Keg will have many friends sale day because of his completeness and balanced set of traits. We consider him to be one of the best Powder sons we have had to date which is no surprise when you look at the bottom side of his pedigree. His mother is a model Gelbvieh female with lots of volume and thickness and ideal foot and udder structure. If you are looking for a black bull we are sure you will have this one marked high.

23

Black ~ Homozygous Polled Purebred
SA BIRCH'S POWDER KEG 72D

SA 72D February 1, 2016 Leptin TT
 Act BW 80 Adj WW 683 Adj YW 1246

Sire: AWB BIRCH'S BLK POWDER 37Z ET

JRI HEAVY EQUIPMENT 125M3

Dam: SA BIRCH'S ROSEMARY 63Y
 SA BIRCH'S ROSEMARY 33W

CE 11 BW -0.8 WW 55 YW 82 MK 33 TM 61 MCE 8



SA BIRCH'S ROSEMARY 63Y
 Dam of Lot 23

24

Homozygous Polled Purebred
SA BIRCH'S SHORT FUSE 186D

SA 186D March 15, 2016 Leptin CT
 Act BW 94 Adj WW 733 Adj YW 1201

Sire: AWB BIRCH'S BLK POWDER 37Z ET

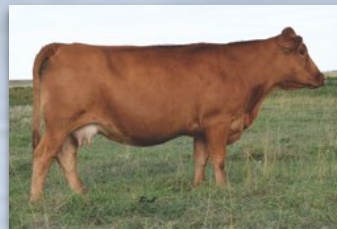
VV TIREE 150T

Dam: SA BIRCH'S ROSEMARY 33W
 FRSQ FOURSQUARE ROSEMARY 58R

CE 9 BW 0.9 WW 58 YW 81 MK 34 TM 63 MCE 7



Another Blk Powder son from the Rosemary family. Very similar to lot 23 but just in a different wrapper. We have always appreciated the structural soundness of the Powder sons and Short Fuse is no different. When you combine Tiree on the dam's side you know this bull will maintain his soundness for years to come. His dam is a cow that has paid her way many times over. A daughter sold out of this sale to Foursquare Gelbvieh and we have kept other daughters in our herd, including the dam of lot 23. Short Fuse will give you those in demand feeder steers and females just like his sisters.



SA BIRCH'S ROSEMARY 33W
 Dam of Lot 24, Granddam of Lot 23

25

Homozygous Black ~ Polled Purebred
AWB BIRCH'S BIG BANG 173D

AWB 173D March 7, 2016 Leptin CC
 Act BW 83 Adj WW 743 Adj YW 1255

Sire: AWB BIRCH'S BLK POWDER 37Z ET

AWB BIRCH'S VOODOO 95W

Dam: GAB BIRCH'S WITTA 75Y
 VV WITTA 168W

CE 8 BW 0.4 WW 60 YW 81 MK 33 TM 63 MCE 7



Big Bang is a growthy March born bull from one of our top black cows. Her daughter was part of our show string last fall and sold in the Wish List Sale to JSJ Livestock. We are excited to see what her future holds! We have said it for all the Powder sons but will say it again, make sure to keep the daughters of Big Bang, they will make great cows.



GAB AWB BIRCH'S WITTA 141C
 Maternal Sister sold to JSJ Livestock



GAB BIRCH'S WITTA 75Y
 Dam of Lot 25



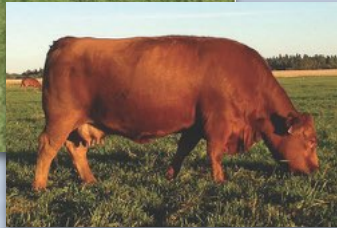
**REF
SIRE**

**Polled Purebred
FRL FIR RIVER CROSBY 806A**

FRL 806A January 3, 2013
Act BW 90 Adj WW 748 Adj YW 1431

JCGR BAR GT FLASHBACK 410M ET
Sire: RID R COLLATERAL 2R
JCGR BAR GT LOMI 27B ET

DRT SUPERB 16S
Dam: DRT LONESOME LUCKY PENNY 7W
DRT HIGH SOCIETY 24S



DRT LONESOME LUCKY PENNY 7W
Dam of Crosby

After an epic search in the spring 2014, Crosby was the best bull we came across. We felt he'd be a big time power bull but as an added bonus he calves easy enough to use on heifers. He has matured into one of the most impressive mature bulls we've seen in any breed in a long time. The soundness and foot structure on this bull are second to none. He is so correct and has as much volume as any Gelbvieh bull you'll find! His daughters look outstanding and we are confident they will be leaders in our herd down the road. Sire of lots 26 and 27.



26

**Black ~ Polled Purebred
SA BIRCH'S BREAK AWAY 43D**

SA 43D January 27, 2016 Leptin CT
Act BW 86 Adj WW 713 Adj YW 1250

Sire: FRL FIR RIVER CROSBY 806A

FRL FIR RIVER BIG N RICH 438Y
Dam: VV CHOCOLATE TRUFFLE 30B
VV TRUFFLE 22T ET

CE 12 BW 0.8 WW 66 YW 87 MK 27 TM 60 MCE 8



VV CHOCOLATE TRUFFLE 30B
Dam of Lot 26

Break Away is a bull that really ticks a lot of boxes on your checklist for your next herdsire. From a modest 86lb birthweight his first calf dam weaned him off at the top end of the pen. He didn't stop there though and continued on with a strong yearling weight as well. His dam was purchased at Agribition and is a maternal sister to our donor cow, VV Wruffle Me 18W, and is the only black cow Ron & Carol own. We loved these sisters so much that we bought another as the high selling bred heifer in the Wish List Sale last fall. This stout and stylish calf will leave you with great females and market steers and will calve like a dream.



27

**Black ~ Polled 88%
AWB BIRCH'S FACE OFF 143D**

AWB 143D February 17, 2016 Leptin TT
Act BW 74 Adj WW 670 Adj YW 1147

Sire: FRL FIR RIVER CROSBY 806A

AWB BIRCH'S MOLSON 31W
Dam: AWB BIRCH'S GRACE 180B
AWB BIRCH'S GRACE 0203Y

CE 11 BW -0.7 WW 61 YW 90 MK 30 TM 61 MCE 6



AWB BIRCH'S GRACE 0203Y
Granddam of Lot 27

Face Off is a low birth weight bull safe for the heifer pen who still has plenty of performance. He comes from a young cow family we are developing as some of our top black females. His granddam maybe one of the most beautiful females on the farm. With the combination of the Grace family and Crosby backing this bull you will want to keep his daughters as replacements.



**REF
SIRE**

**Black ~ Homozygous Polled Purebred
SLC TOUCHDOWN 166W**

SLC 166W May 8, 2009
Act BW 90 Adj WW 896 Adj YW 1322

Sire: **SLC JAGERMEISTER 40R**
SLC FREE EMPRESS 32H

Dam: **SLC BLACK JACK 48F ET**
SLC EMPRESS 68N
SLC 218F



AWB BIRCH'S BOJANGLES 24C
Touchdown son and High Seller in 2016
Owned by Hawkeye Ranches

From the first time we saw Touchdown, we admired him for his mass and great herdbull look. His calves always impress us from day one with their ease of birth and vigour and then quickly develop explosive muscle shape. We have several daughters who have just had their first calves and they look awesome! A herdsire who can calve this well and yet display this kind of growth is definitely one we can use in our breeding program. His son, Bojangles, was the high seller last year to Hawkeye Ranches and then saw heavy use in both their program and ours and the calves are great. Sire of lots 28 and 29.



28

**Black ~ Homozygous Polled Purebred
AWB BIRCH'S QUARTER BACK 74D**

AWB 74D February 1, 2016 Leptin TT
Act BW 90 Adj WW 674 Adj YW 1136

Sire: **SLC TOUCHDOWN 166W**

Dam: **OHF MEGA JOLT 1L**
AWB BIRCH'S MS ICON 7Y ET
JCGR BAR GT MS ICON 150J

CE 9 BW 0.7 WW 66 YW 76 MK 20 TM 53 MCE 7



JCGR BAR GT MS ICON 150J
Granddam of Lot 28

Quarter Back is a long, big volumed bull that had been the type to get noticed from a young age. His balanced traits are going to be an asset to his new owner. The bottom side of his pedigree is very unique, going back to the great Ms Icon 150J female. She was raised by the Jumping Cow Gelbvieh Ranch in the US before being purchased by Thackeray Land & Cattle where she was a donor female for them. We were fortunate to get some embryos from her which resulted in two heifers, both of which we still have. Expect Quarter Back's calves to mature quickly and be very eye catching.



29

**Homozygous Polled Purebred
AWB BIRCH'S FIELD GOAL 18D**

AWB 18D January 20, 2016 Leptin TT
Act BW 72 Adj WW 624 Adj YW 1123

Sire: **SLC TOUCHDOWN 166W**

Dam: **VV TIREE 150T**
AWB BIRCH'S QUEEN 52B
SA BIRCH'S QUEEN 158Z

CE 11 BW 0.1 WW 79 YW 105 MK 24 TM 64 MCE 7



VV TIREE 150T
Grandsire of many lots

If you are looking for a sure fire heifer bull, here he is. Field Goal comes from four generations of sires we have used on heifers. He is very smooth fronted with lots of extension while still being massive middled and having expansive width over his top. To top it off he is decked out with all the bells and whistles: dark red, lots of hair, homo polled and leptin TT. This bull will be a real score for his new owners.



**REF
SIRE**

**Homozygous Polled Purebred
JRI POP A TOP 197T83**

JRI 197T83 August 12, 2007
Act BW 74 Adj WW 786 Adj YW 1322

JRI PLD FREE AGENT 125J3
Sire: JRI TOP SECRET 253M75 ET
JRI MS PLD FRONTIER 253J60

JRI EXTRA EXPOSURE 285L71 ET
Dam: JRI MS RED DAWN 197R72
JRI MS SPECIAL AGENT 197M62

Pop A Top has become one of the most used Gelbvieh bulls in many years and for good reason. With calving ease for heifers combined with adequate performance for cows, he has sired extremely consistent offspring who have gone on to be very successful in many aspects of the business. While in Denver, Aaron and Joe's top picks of the bred females were Pop A Top daughters who patterned much like these bulls. If you want to add calving ease, fleshing ability and general maternal traits have a good look at the bulls. Sire of lots 30-32.



Budweiser is an extremely eye catching bull that is quite flawless in his structure. His granddam was purchased in the V&V Farms female sale after we saw how well she had produced for them. Our goal is to build a cow family around Budweiser's dam in hopes they will produce more bulls like him. This bull continues to blossom and gets better each time we look at him. We are confident he'll be super impressive as a mature bull. Note the birthweight and front end design he carries.

30

**Homozygous Polled Purebred
AWB BIRCH'S BUDWEISER 82D**

AWB 82D February 3, 2016 Leptin CT
Act BW 76 Adj WW 693 Adj YW 1176

Sire: JRI POP A TOP 197T83

VV XCALIBRE 101X
Dam: AWB BIRCH'S WYNONA 193B
LCR WYNONA 937W

CE 8 BW 2.5 WW 68 YW 92 MK 29 TM 63 MCE 2



JRI TOP SECRET 2653M75 ET
Grandsire to LOTS 30 - 32



Many times through the catalog you have heard us speak of cow families and few are as important to us as the Discos. They have produced many 4-H projects for us going back as far as Aaron's very first heifer. If you are in search of a bull to use on heifers, Bottoms Up could be what you are looking for. His dam was one of six females selected last fall by MacDougall Ranch in BC. Our hope is she continues to produce offspring like Bottoms Up for their advancing program.

31

**Homozygous Polled Purebred
AWB BIRCH'S BOTTOMS UP 89D**

AWB 89D February 4, 2016 Leptin TT
Act BW 65 Adj WW 686 Adj YW 1167

Sire: JRI POP A TOP 197T83

VV YOICKS 107Y
Dam: AWB BIRCH'S DISCO 96B
AWB BIRCH'S DISCO 4W

CE 12 BW -1.8 WW 64 YW 93 MK 32 TM 64 MCE 0



VV YOICKS 107Y
Grandsire to many lots

32



Cold One is a calf we think a lot of and have seriously considered keeping him for our own heifer pen. He is incredibly soft made, wide topped and sound in his design. He is consistently one of the first bulls to be noticed in the pen because of his breed character and elite quality. It's because of bulls like him that Pop A Top become so popular as an AI sire. Cold One is backed by a top two year old dam who has really blossomed now that she's in production. She is a very easy fleshing, sound, perfectly uddered female who was once again at the front of calving. She is just getting warmed up with this bull so look for her in the future as we are sure it's going to be pretty awesome! As an added bonus he is DNA tested dilutor free.

**Homozygous Polled Purebred
AWB BIRCH'S COLD ONE 4D**

AWB 4D January 12, 2016 Leptin TT
Act BW 76 Adj WW 693 Adj YW 1117

Sire: JRI POP A TOP 197T83

SLC TOUCHDOWN 82W
Dam: AWB BIRCH'S TAMMY 131B
VV UNTOLD STORY 118U

CE 10 BW -0.1 WW 63 YW 84 MK 29 TM 60 MCE 2



AWB BIRCH'S TAMMY 131B
Dam of Lot 32

33



Daybreak is a very maternal oriented bull from what may be the best cow in our program. She was the 2015 Canadian National Champion Female and is now one of our donors. Her first ET calves look great, especially the heifers which is not surprising. Her first son sold to Lomond Grazing after being the Reserve Champion Bull Calf at Farmfair. Daybreak's sire was used successfully on heifers and left us with some tremendous females. If you are looking to improve your cow herd, buy this bull and breed him to your best cows then keep every one of his daughters.

**Polled Purebred
SA BIRCH'S DAYBREAK 165D**

SA 165D February 27, 2016 Leptin TT
Act BW 86 Adj WW 665 Adj YW 1064

Sire: SA BIRCH'S OFF ROAD 160Y

DRJ FULL EXPOSURE 013N
Dam: SA BIRCH'S GAYLE 48Z
SA BIRCH'S GAYLE 32N

CE 9 BW 0.5 WW 61 YW 76 MK 33 TM 64 MCE 8



SA BIRCH'S GAYLE 48Z
Dam of Lot 33



SA BIRCH'S TIMBER 54B
Maternal Brother

Thank you for your support of our program in 2016!



AWB BIRCH'S LEXXUS 51D
Flushmate to Lot 8
Sold to Keriness Cattle Co.



SA BIRCH'S GAYLE 32N
Embryos to Linden Litchfield, AB, Lansing Land & Livestock, AB
and Glendale Gelbvieh of Australia



SA BIRCH'S ROSALIE 4C
Sold to Unger Land & Livestock



Keriness Cattle Co.

The Ness Family

403 852 7332

Welcome Friends, new and old! The Ness family is excited and proud to be participating again in the Twin Bridge and Guests 6th Annual Bull and Female Sale. We appreciate how this sale grows in the strength of bulls offered by the Birch's and ourselves as we strive to meet all customer's standards, getting better year after year.

This year we are offering sons of six different sires to the sale, since adding three new bulls to our program last year. Our bulls have been fed free range soy pellets after weaning and hay along with personal bucket feeding of a corn ration from Kert, Cindy, Brenda and myself. We individually monitor each bull and heifer by hand feeding twice a day. We want to thank the Birch family for the competition at the cattle shows. It really doesn't matter who wins first so long as it's one of us! P.S. my hand hurts from congratulating you all!

Thanks and we hope to see you all there!
Kert & Cindy, Joe & Brenda



34

This good moving, long made, full stride, moderate framed, and soft shouldered black bull developed from a very powerful cow listed as a Dam of Distinction. He is sired by an easy calving bull. He can be a maintenance free bull that should last for years, and will add frame and weight to your fall crop. A maternal sister is working at the Birch's and was champion female at the Vulcan Regional 4-H show as a two year old.

Black Polled Purebred
KCC KERINESS DID IT
KCC 91D January 22, 2016
Act BW 98 Adj WW 689 Adj YW 1293

FLAD FLADELAND ALAMO 117Y
Sire: CK ALLIANCE 14A
SS MARY ANN 21S

VV BERETTA 13P
Dam: WL WILLI TRACY T30
WL WILLI RAELEN R31

CE 11 BW 2.3 WW 63 YW 81 MK 34 TM 64 MCE 9



KCC YES DAD SHE'S VERY PRETTY
Maternal Sister to Lot 34



**REF
SIRE**

Sire of lots 35-37 and 45.

Black Polled Purebred
DRT LONESOME STETSON 60A
DRT 60A February 8, 2013
Act BW 87 Adj WW 803 Adj YW 1473

DRT LONESOME ZEPPLIN 1U
Sire: DRT LONESOME HALL OF FAME 38X
DVE DAVIDSON MS JULIO 91S

SLC LATIGO 118L
Dam: RJD 81S LATIGO 225P
SLC MISS 61Y NIGHT ET 81F



SLC MISS 61Y NIGHT ET 81F
Grandmother to Stetson 60A



Cow Bull – Fore Play, our meat machine, is a true stamp from his sire that exhibits width, stout body, muscle definition with good spring of rib and ease of disposition. He was selected the 2016 IPE's Reserve Grand Champion Bull in the Multi-breed class, and has caught the eye of many at all outings this show season. The ladies here will miss his quiet easy going nature around farm.

35

**Black Polled Purebred
KCC FORE PLAY 105D**

KCC 105D January 14, 2016
Act BW 85 Adj WW 762 Adj YW 1234

Sire: DRT LONESOME STETSON 60A

TVR ULTRA SONIC 9U
Dam: KCC KERINESS AMANDA 23Y
KCC AMANDA 41U

CE 8 BW -1 WW 55 YW 68 MK 35 TM 62 MCE 7



IPE Reserve Champion Bull



Cow bull – this bull has a medium to large frame, is deep & solid, with a good reserve of inventory in the back end. With a long stride and good temperament, JOE 469D is one of the heaviest bulls that hit the scale mid December. Whiskey is from a Dam of Merit that was picked as Sweetheart Classic at Agribition 2010 that is still going strong at the farm.

36

**Black Polled Purebred
JOE WHISKEY DYCK**

JOE 469D January 12, 2016
Act BW 88 Adj WW 674 Adj YW 1341

Sire: DRT LONESOME STETSON 60A

WRS SILENT STAN 20S
Dam: FLAD WHISKEY GIRL 116W
FLAD SUMMER 26S

CE 8 BW 1.1 WW 65 YW 83 MK 32 TM 65 MCE 6



FLAD WHISKEY GIRL 116W
2010 Sweetheart Champion
Dam of lot 36



Cow Bull – This guy was the heaviest bull when weighing yearlings as its pretty easy to see this large framed, long bodied, balanced with good muscle pattern, he's a bull that can get out and cover pasture. KCC 87D birth weight may seem high, but is just under the optimum 7% of the dam's weight. She is one of the oldest cows at the farm and has a consistent weight of 1500lb. A full sister to 87D sold at the Prairie Alliance Sale in 2015.

37

**Black Polled Purebred
KCC 87D**

KCC 87D January 22, 2016
Act BW 104 Adj WW 717 Adj YW 1420

Sire: DRT LONESOME STETSON 60A

OAR MO ROC PREMIUM 139M
Dam: KCC ELEGANT LADY 83R
KCC ELEGANT MS 31J

CE 5 BW 4.8 WW 66 YW 83 MK 31 TM 64 MCE 2



All around / Cow bull – moderate framed with fullness, length, balance, muscle development and hair. He comes from a smaller framed cow, and the pair was back-up in our show pen. A spunky younger bull with loads of character has a lot of size and heart.

38

**Polled Purebred
KCC DRINK UP**

KCC 109D March 9, 2016
Act BW 93 Adj WW 859 Adj YW 1384

DRT LONESOME HIGH ROLLER 55W
Sire: DRT LONESOME AHOY
WGG WILL U B MINE 27W

CK SUPERIOR 96X
Dam: KCC YELLOW SOLO CUP 72Z
EV FOXY X 13X

CE 7 BW 2.5 WW 65 YW 93 MK 30 TM 62 MCE 3



EV FOXY X 13X
Granddam of lot 38



All purpose bull - that fits with the mature bulls in this pen despite his birth date. He is the youngest bull to be sold this year but we held onto him because he is bold, wide, and deep with great structure. The Ness's have retained the 2015 half brother to the dam as a herd sire that has conformation and EPD's. 'Dee Lect A Bull's' YW and TM EPD's are in the top 10%.

39

**Polled Purebred
KCC DEE LECT A BULL**

KCC 117D March 26, 2016
Act BW 81 Adj WW 737 Adj YW

DRT LONESOME HIGH ROLLER 55W
Sire: DRT LONESOME AHOY
WGG WILL U B MINE 27W

FRL FIR RIVER VOLT 226X ET
Dam: ZTM MCCOY 226X SAMANTHA 108A
ZTM MCCOY 90J SAMANTHA 75W

CE 4 BW 2.8 WW 78 YW 114 MK 38 TM 78 MCE 2



KCC I TOLD YOU SO 85C
Maternal brother to lot 39



Heifer Bull (hence the name) – This long bodied heifer is clean fronted, small skulled, with meaty portions in the back. KCC 122D has impressed us with his growth, with his weaning weight being 59% of the dam on Sept 28.

40

**Polled Purebred
KCC KERINESS DIAL A HEIFER**

KCC 122D January 27, 2016
Act BW 74 Adj WW 695 Adj YW 1351

FLAD FLADELAND PITBULL 47Y
Sire: TTG TWISTED T BOBO
EV MISS GEM 36Z

JRI STARBUCKS 254Y82
Dam: KCC BLONDIE BOVINE BLEMISH 40B
STON MS CERTAIN GLOW 12Z

CE 13 BW -1 WW 54 YW 80 MK 30 TM 58 MCE 6



FLAD FLADELAND PITBULL 47Y
Grandsire of lot 40



All purpose Bull – A powerful built bull has it all - depth, big nuts, with an ass that carries down with thickness and with a lot of gain. JOE 461D has a wow factor and is from one of our first calf heifers and a sire with calving ease. He drew lots of attention this year at the Canadian Bull Congress. This is a bull that can be handled or directed by all ages or gender. This is Joe Ness's favorite in his style and temperament.

41

**Polled Purebred
JOE DOUBLE DOG DARE YA!**

JOE 461D January 21, 2016
Act BW 79 Adj WW 714 Adj YW 1501

FLAD FLADELAND ALAMO 117Y
Sire: CK ALLIANCE 14A
SS MARY ANN 21S

DL JEN-TY POWER HOUSE 22Z
Dam: KJL LAWES BERYL 476B
KJL LAWES ZENITH 253Z

CE 14 BW -0.4 WW 66 YW 77 MK 32 TM 64 MCE 11



DL JEN-TY POWER HOUSE 22Z
Grandsire of lot 41



All Purpose Bull that carries swagger demonstrating guts, girth, depth, thickness with muscle and a strong top. This bull has a low birth weight that displays swagger and really impressed us September 28 with his weaning weight of 815lbs, gained only from mom and pasture last year. 360D has turned Brenda's head to be her pick of our sale offerings. Dot Com is a real lady's man (Ladies w/ 2 legs).

42

**Polled Purebred
JOE DID MATCH DOT COM**

JOE 360D January 1, 2016
Act BW 81 Adj WW 727 Adj YW 1400

JRI SECRET INSTINCT 254U83
Sire: JRI SUPER DUTY 9Y53
JRI MS TATOR CHIP 9W13

KJL LAWES YAMIR 8Y
Dam: KJL LAWES MOLLY 489B
KJL LAWES LITTLE GIRL 958W

CE 13 BW 0.8 WW 72 YW 110 MK 27 TM 63 MCE 2



JRI SUPER DUTY 9Y53
Sire of lot 42



Cow Bull – is bold, big boned, meaty bull with lots of frame and hair. He is a full brother to KCC Can't Touch This 76C, a bred we showed this fall with lots of boldness. Dumb Cuff's dam has consistently birthed out the light 90 lb calves from a 1408 lb cow.

43

**Polled Purebred
KCC DUMB CUFF**

KCC 110D January 18, 2016
Act BW 92 Adj WW 650 Adj YW 1399

MGF RIG ROCKER 79U
Sire: FRL FIR RIVER RONNY RIG 652Z
VCR MS PLD VALE TWIN 19T

CES DECKA OUTBACK 75S
Dam: STON MS CERTAIN GLOW 12Z
STON MS CERTAIN GLOW 23X

CE 3 BW 5.1 WW 70 YW 101 MK 32 TM 67 MCE 7



FRL FIR RIVER RONNY RIG 652Z
Sire of lot 43 & 44



44

**Polled Purebred
JOE DISCOVERED**

JOE 462D January 2, 2016
Act BW 81 Adj WW 620 Adj YW 1047

MGF RIG ROCKER 79U
Sire: FRL FIR RIVER RONNY RIG 652Z
VCR MS PLD VALE TWIN 19T

FLAD 24/7 34X
Dam: DVE DAVIDSON MS 24/7 29Z
FRL FIR RIVER MISS T-MACK 2U

CE 3 BW 3 WW 71 YW 106 MK 28 TM 64 MCE 7



FRL FIR RIVER RONNY RIG 652Z
Sire of lot 43 & 44

Somebody please help by purchasing JOE 462D! This dark red heifer has a clean undercarriage with tons of shape and capacity throughout. I'm tired of hearing dad bring up, "Discovered is one of the heaviest on the scale at weaning and yearling times, with her broody head she's only going to make you great bulls for years to come." Don't be surprised if you see Kert raising his hand... it's not for my protection. It's "I told you so son!" for many years to come.



45

**Black Polled Purebred
JOE IS DELICATE**

JOE 466D February 23, 2016
Act BW 91 Adj WW 633 Adj YW 1006

DRT LONESOME HALL OF FAME 38X
Sire: DRT LONESOME STETSON 60A
RJD 81S LATIGO 225P

DL JEN-TY REAL DEAL 17X
Dam: DRT LONESOME BROOKLYN 138A
DRT LONESOME RUBY RED 35W

CE 6 BW 2.4 WW 66 YW 83 MK 27 TM 59 MCE 4



DRT LONESOME STETSON 60A
Sire of lot 45 and 35-37

This black heifer calf is a real beauty! A very eye appealing, feminine female from the depth of body, back end capacity, to her easy fleshing nature that is highlighted by her light frame. She has style, with lots of hair don't let the name fool you ~ Delicate can play the field. This female will be marked on your bulls dance card and everyone's catalogue.



46

**Polled Purebred
KCC UNDEFINED**

KCC 88D February 17, 2016
Act BW 84 Adj WW 635 Adj YW 938

DRT LONESOME HIGH ROLLER 55W
Sire: DRT LONESOME AHOY
WGG WILL U B MINE 27W

OAR MO ROC PREMIUM 139M
Dam: KCC MISS AMANDA 91R
KCC KERINESS AMANDA 12K

CE 5 BW 2.3 WW 66 YW 86 MK 32 TM 65 MCE 1

This gold heifer has a moderate frame, long spine, which she tops off with a nice hair coat and good disposition that should mature into a 1550lb cow. This heifer's dam has produced other females that we retain at the farm which we rely on for their production each year.

Thank You To Our 2016 Buyers

Kevin & Lee Bertram
Clay Ridge Farms
Covington Gelbvieh
Darren Douglas
Deep Sands Livestock
Dusty Rose Cattle
Fairhaven Farms
Kristine Fossum
Hawkeye Ranches

Carl Vanderploeg
V&V Farms
Thackeray Land & Cattle
Sierra Stewart
Prairie Cattle Company
MacDougall Ranch
Lomond Grazing Association
Kristy Creek Gelbvieh
Claude Durupt

Praeher Ag
Nolan Pharis
Pandiana Farms
Milne Ranch
Colin & Felicity Manuel
Roy & Gaye Lucas
Lansing Land & Livestock
Matthew Jacobsen

There are few things we enjoy more than sharing our passion for cattle with anyone who is interested. We are very proud to have hosted visitors from 4 countries and 3 continents this year!



Julie & Aderian Nixon and Family
Weetalabah Cattle Services ~ Australia.



Justin Covington and Rachel Dowdell
Covington Gelbvieh ~ Colorado



Jason Herst
Carroll Creek Cattle Co. ~ Ontario



Willie, Ronald, Rudy & Evald
Estancia Potsdam Ranch ~ Paraguay



Average Gelbvieh Sire EPDs

| CE | BW | WW | YW | Milk | TM | MCE |
|-----|-----|----|----|------|----|-----|
| 8.5 | 1.6 | 63 | 85 | 30 | 62 | 5.3 |





108 Flett Drive, Airdrie, Alberta T4B 1N2
 Phone: 403/948-3520 Fax: 403/948-2917
 Website: www.donsavageauctions.com
 Email: don@donsavageauctions.com

| | | |
|---------------------|--|--------------------------------|
| CANADA | | POSTES |
| POST | | CANADA |
| Postage paid | | Port payé |
| Addressed Admail | | Médiaposte avec adresse |
| | | No 4365860 AIRDRIE, Alberta |

