



SEVERTSON
TOP
Cut
FEMALE SALE
2012



SUNDAY
DECEMBER 2, 2012

AT THE FARM • 1 PM • INNISFAIL, ALBERTA, CANADA

Sale Day Phones...

403.224.3756 - Office
403.358.4676 - Scott
403.803.4434 - Don
780.581.4510 - Darrell
780.718.5477 - Larry
403.507.5424 - Darren

Sale Staff...

Steve Dorran, Auctioneer 403.540.9498
Mark Stock, Ringman 403.357.8104
Craig Flewelling, Ringman 403.224.2111

Sale Accommodations...

R & R Inn & Suites, Innisfail, AB (403) 227-2214
Best Western Innisfail Inn, Innisfail, AB (403) 227-4405
Highwayman Motor Inn, Innisfail, AB (403) 227-6001

Hospitality...

Come early and join us for complimentary lunch at noon

Catalog...

Designed and Published by Prime Cut Publishing, Kim Matthews
A downloadable copy of the catalog can be found at
www.donsavageauctions.com

Delivery...

We will assist in arranging delivery as quickly as possible after the sale.
Many reliable livestock truckers are based in the area. All deliveries are the
purchasers risk. We recommend that you insure your purchases.

Sale Location...

Severtson Land & Cattle, Innisfail Alberta - From the Bowden turn off approximately 1 miles east
to Range Road 10 (Police Dog Training sign); 2 miles north; at the end turn east and go 1/2 mile
to SLC

Viewing...

Viewing of the sale cattle is welcome prior to the sale.
Please call Scott to arrange a convenient time.

Guest Consignors...

Stone Gate Farm

Darrell & Leila Hickman
RR # 2 Vermilion, Alberta T9X 1Y7
780.581.0077 Cell 780.581.4510
www.stonegatefarms.ca

EYOT Valley Ranch

Larry & Lynne Fecho
48323 - Range Road 251 RR#2
Millet, Alberta T0C 1Z0
780.986.9705 Cell 780.718.5477
www.evgebviah.com

Sunberry Valley Ranch

Darren & Carol Vancuren
Box 7, Site 16, RR#2
Sundre, Alberta, T0M 1X0
403.638.4142 Cell 403.507.5424



The Hickman's



The Fecho's



The Vancuren's



Scott & Lisa Severtson
 (403) 224-3756
 (403) 358-4676
 RR #2, Innisfail, AB T4G 1T7
 email: slcgelb@xplornet.com
 www.severtsoncattle.com

Welcome...

On behalf of everybody at Severtson Land and Cattle I would like to welcome you to our Top Cut Female Sale. Agriculture in general looks more positive than it has for years. The grain prices are very strong and the cattle market is holding its own with some very good times ahead in the near future. We are offering half interest in 2 of our top producing cows - one red cow and one black cow. Both females will be at Farmfair and Agribition. Both cows are bred to our new herd bull, JRI Starbucks. As well, we are offering a very exciting black Balancer heifer calf that will also be out this fall. We have selected 10 Top Cut bred heifers bred to the calving ease specialist, SLC Rio Grande 56U. There will also be 20 Gelbvieh Angus cross commercial heifers bred to calving ease Angus bulls. We would like to welcome guest consignors Stone Gate Farms, Eyot Valley Ranch and Sunberry Ranch to participate in our sale. See you on sale day.

Sincerely,

Scott Severtson

Welcome...

Welcome to the Severtson Land & Cattle 3rd Top Cut Female Sale with guest consignors Eyot Valley Ranch, Sunberry Valley Ranch and Stone Gate Farm.

The Gelbvieh breed has now been bred in Canada for 40 Years and Scott and Lisa Severtson have been raising Gelbvieh or many of those years. They have produced National Champions in bull and female divisions and hold one of the top bull sales in this country.

This year's sale, again, features breed leading Gelbvieh female genetics. Females from each program carry the same genetics as many of the high selling bulls at this past spring's bull sales. Sunberry Valley Ranch is offering some awesome Balancer heifer calves and top quality Red Angus females.

The cattle industry is strong and the quality genetics that are offered in this sale are sure to add to and improve many breeding programs. Severtson Land & Cattle Top Cut Female Sale is where you will want to be on December 2nd. Be sure to enjoy the whole Gelbvieh weekend.

If you have any questions please contact Scott, Darrell, Larry, Darren or myself. If you are interested in purchasing but are unable to attend the sale December 2nd please contact Don Savage Auctions and your order will be handled in a professional manner.

Yours truly,

Don Savage

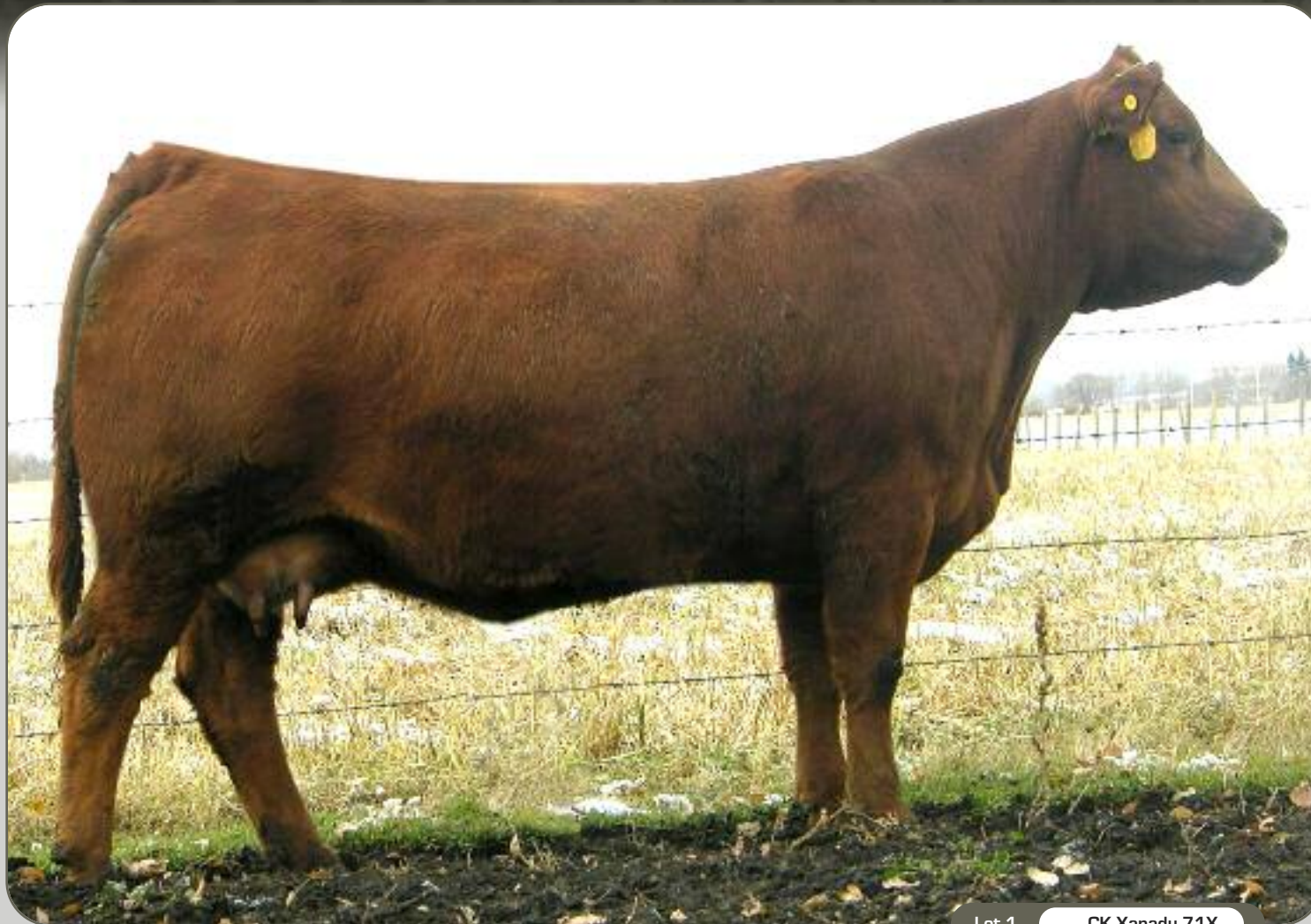


Sale Management...



108 Flett Drive, Airdrie, Alberta T4B 1N2
 Phone: 403/948-3520 Fax: 403/948-2917
 Website: www.donsavageauctions.com
 Email: don@donsavageauctions.com

SEVERTSON *Severtson Feature Bred Female*



**Selling 1/2
Interest!**

Selling half interest in this dark red 2-year old heifer that has done an excellent job on her first calf. We will have her at Farmfair and Agribition this fall, she is sired by a Headstart son; the Headstart daughters are some of our best young females with plenty of milk and excellent teat and udder structures. She sells bred to new herd sire, JRI Starbucks

Lot 1 **CK Xanadu 71X**



CK *Xanadu* 71X

Red • Polled

88% • Purebred • Female • February 15 2010 • CDGV135490 • CK71X

CE	BW	WW	YW	MK	TM	GL	CED	SC
107	1.2	31	62	19	35	-1.0	100	0.3

SLC HEAD START 437M
SLC HEAD START 124T
SLC SUE 35P

DVE DAVIDSON J.R. 25P
CK TAVIA 15T
CK RAIN 22R

NGAC REMITALL PLD EXCEL 232E
SFL SLC CHOTEAU SUE 95H
NGAC REMITALL PLD EXCEL 232E
SFL SLC CHOTEAU SUE 95H
DVE DAVIDSON PLD BLK JIM 6L
DVE DAVIDSON MISS JANE 66M
ANGUS
CK SYMPHONY 9N

Exposed to JRI Starbucks from July 4 to Sept 15

Severtson Feature Bred Female CATTLE



**Selling 1/2
Interest!**

Selling half interest in this black polled donor cow who traces back to our foundation sire, XZR Stubby 342C, and is a direct daughter of Valley Blackjack(JR). 133S is very thick made deep bodied and sharp fronted with excellent feet - she is one of the easiest fleshing females at SLC. She sells bred to new herd bull, JRI Starbucks, and she will be at Farmfair and Agribition. 133S will be flushed this spring after she calves.

Lot 2 **SLC Lady 133S**



2

SLC Lady 133S

Black • Polled • BW: 84 • WW: 676

88% • Purebred • Female • February 7 2006 • CDGV117703 • SLC133S

CE	BW	WW	YW	MK	TM	GL	CED	SC
105	2.4	34	58	21	38	0.3	102	0.5

SLC BLACK JACK 48F ET
VG VALLEY BLACKJACK JR 37H
VG VALLEY SC SWEETIE 80D

XZR C342 (STUBBY)
SLC RED LADY KRISTIN 156K
SLC RED LADY 112B

BTI BARCELONA 2057B
BB MISS 61Y
RLQ JAMES 179A
DJD VALLEY 16T
KCF BENNETT HORIZON 103X
XZR 113A
OAR MO-ROC-GELB 92Y
ANGUS

Exposed to Starbucks July 4 to Sept 15

SEVERTSON *Severtson Feature Open Heifer*



This thick made Balancer heifer will be at Farmfair and Agribition this fall. She was already crowned Grand Champion at the Innisfail and District 4-H Show along with her mother 928W, who was also champion when Levi showed her as a bred heifer. Excellent opportunity to buy a show heifer that will stand some competition.



Ref GCCA Gerrard Rose 928W

Lot 3 SLC Rose 5Z

3 SLC *Rose 5Z*
 Black • Polled • BW: 72

50% • Balancer • Female • January 7 2012 • CDGV147110 • SLC5Z

CE	BW	WW	YW	MK	TM	GL	CED	SC
	2.1	43	80	11	32			

SLC MASTER PLAN 134N
 SLC MASTER PLAN 191U
 SLC LACQUER 109S

G 13 STEEL
 GCCA GERRARD ROSE 928W
 HDKJ 4DJ NEON ROSE 2N

SLC LATIGO 118L
 BTI MS CHARLA 2191F
 SLC HEAD START 437M
 NGC PLD LACQUER 6M
 G13 STRUCTURE
 LASSY 9492
 TC FOREFRONT 1213
 HDKJ 4DJ ERICA ROSE 34L

Sells Open

Severtson Feature Bred Female & CATTLE



Lot 4 **SLC Nashville 177Z**

Ref **SLC Lora 299P**

Dam of Lot 6

4 SLC Nashville 177Z

Red • Polled • BW: 87

94% • Purebred • Female • May 5 2012 • CDGV147115 • SLC177Z

CE	BW	WW	YW	MK	TM	GL	CED	SC
100	4.4	44	75	15	37	-0.6	98	0.4

SLC MERV 12N
SLC ROY BEAN 141U
SLC 247P

KCB PINTO CREEK NASHVILLE
RJD JESSIE'S NASHVILLE 45R
CVG CYPRESS VIEW JESSIE 17J

SLC FREEDOM 178F ET
SLC HICKORY GOAL 272K
VG VALLEY BLACKJACK JR 37H
SLC LONNIE 56L

TSCG TWIN STAR LELAND 171L
CVG CYPRESS VIEW KONNIE 32K
GFA BERGEN G-MAN 736G
CVG CYPRESS VIEW FONDU 8F

Sells Open

5 SLC Ace of Spades 229Z

Black • Polled • BW: 88

94% • Purebred • Female • June 5 2012 • CDGV147114 • SLC299Z

CE	BW	WW	YW	MK	TM	GL	CED	SC
106	2.0	46	78	19	42	-0.1	102	0.2

STON UNDER RATED 7U
STON XTERMINATOR 7X
STON MISS JULIE 13U

CES DECKA QUEST 54M
CES DECKA ACE OF SPADES 43R
CES DECKA ACE OF SPADES 41M

SLC MASTER PLAN 134N
STON MISS PARADEE 2S
EV HUMDINGER 119M
ATC GOLD STAR PLD JULIE 80J
WAC FULLBACK 011G
DVE DAVIDSON BLACK LADY 29G
RTC ATLAS 712G
CES DECKA ACE OF SPADES 23K

Sells Open

6 SLC Lora 164Y

Red • Polled • BW: 98 • WW: 832

94% • Purebred • Female • May 17 2011 • CDGV147118 • SLC164Y

CE	BW	WW	YW	MK	TM	GL	CED	SC
103	2.1	41	71	17	37	-0.5	99	0.3

SLC MASTER PLAN 134N
SLC MASTER PLAN 191U
SLC LACQUER 109S

SLC FULLER 84F ET
SLC LORA C 299P
AR LORA C 25H

SLC LATIGO 118L
BTI MS CHARLA 2191F
SLC HEAD START 437M
NGC PLD LACQUER 6M
SLC RIP 121K
SLC MISS FIRE SMOKE 78F
SLC EMPIRE 41E
AR ANCHORS LADY 19E

Exposed to SLC Rio Grande June 30 to Sept 15

7 SLC Empress 68Y

Red • Polled • BW: 82 • WW: 670

94% • Purebred • Female • April 20 2011 • CDGV147116 • SLC68Y

CE	BW	WW	YW	MK	TM	GL	CED	SC
105	1.7	42	71	17	37	0.2	101	0.3

SLC MASTER PLAN 134N
SLC MASTER PLAN 191U
SLC LACQUER 109S

SLC BLACK JACK 48F ET
SLC EMPRESS 68N ET
SLC 218F

SLC LATIGO 118L
BTI MS CHARLA 2191F
SLC HEAD START 437M
NGC PLD LACQUER 6M
BTI BARCELONA 2057B
BB MISS 61Y
JBOB BLACK IMAGE 31Y
YHR 54Y

Exposed to SLC Rio Grande June 30 to Sept 15

SEVERTSON *Severtson & Bred Females*



Lot 8 **SLC Anita 179Y**



SLC *Anita* 179Y

Red • Polled • BW: 88 • WW: 779

94% • Purebred • Female • May 24 2011 • CDGV147121 • SLC179Y

CE	BW	WW	YW	MK	TM	GL	CED	SC
108	0.4	38	69	17	36	-0.7	103	0.5

SLC MASTER PLAN 134N
SLC MASTER PLAN 191U
SLC LACQUER 109S

SLC LATIGO 118L
BTI MS CHARLA 2191F
SLC HEAD START 437M
NGC PLD LACQUER 6M
KCF BENNETT HORIZON 103X
XZR 113A
JRI BMW 285D61 ET
BB MISS 61Y

XZR C342 (STUBBY)
SLC ANITA 210M
SLC ANITA GIRL 7G

Exposed to SLC Rio Grande June 30 to Sept 15



SLC *Lass* 48Y

Red • Polled • BW: 68 • WW: 729

94% • Purebred • Female • April 16 2011 • CDGV147117 • SLC48Y

CE	BW	WW	YW	MK	TM	GL	CED	SC
112	-0.9	35	69	17	34	-1.2	104	0.3

CES DECKA PRECISION 144P
CES DECKA OUTBACK 75S
CES DECKA HARPER 150L

CES DECKA QUEST 54M
CES DECKA CRIMSON TIDE 31K
WGG FLASHPOINT 91F
CES DECKA HARPER 63H
SLC JAGERMEISTER 40R
SLC FREE EMPRESS 32H
SLC HEAD START 437M
SLC MISS BLACK LASS 120H

SLC TOUCHDOWN 71T
SLC LASS 51W
SLC LASS 189S ET

Exposed to SLC Rio Grande June 30 to Sept 15



Lot 9 **SLC Lass 48Y**



Ref **SLC Lass 51W**

Severtson Bred Females & CATTLE



Lot 10 **SLC Lonnie 102Y**

10 **SLC Lonnie 102Y**
 Red • Polled • BW: 90 • WW: 717

88% • Purebred • Female • April 27 2011 • CDGV147107 • SLC102Y

CE	BW	WW	YW	MK	TM	GL	CED	SC
106	1.6	41	74	17	38	-0.3	102	0.3

SLC MASTER PLAN 134N
 SLC MASTER PLAN 191U
 SLC LACQUER 109S

XZR C342 (STUBBY)
 SLC LONNIE 247L
 ATC 197D

SLC LATIGO 118L
 BTI MS CHARLA 2191F
 SLC HEAD START 437M
 NGC PLD LACQUER 6M
 KCF BENNETT HORIZON 103X
 XZR 113A
 ANGUS
 ATC GOLD STAR 72Z

Exposed to SLC Rio Grande June 30 to Sept 15

Lot 11 **SLC Paula 174Y**



11 **SLC Paula 174Y**
 Red • Polled • BW: 99 • WW: 822

94% • Purebred • Female • May 21 2011 • CDGV147120 • SLC174Y

CE	BW	WW	YW	MK	TM	GL	CED	SC
105	2.4	46	79	14	37	-1.0	101	0.1

SLC MASTER PLAN 134N
 SLC MASTER PLAN 191U
 SLC LACQUER 109S

TJB JAGERMEISTER 229M - ET
 WJW DOUBLE U PAULA 703T
 WJW DOUBLE U PAULA 239M

SLC LATIGO 118L
 BTI MS CHARLA 2191F
 SLC HEAD START 437M
 NGC PLD LACQUER 6M
 BTI RED ALERT 2077K
 59D5 JASMINE 177G ET
 LCS DAVIDSON HARMONY 446J
 ATC GOLD STAR ET 138A

Exposed to SLC Rio Grande June 30 to Sept 15

SEVERTSON *Severtson & Bred Females*



Lot 12 **SLC Molly 167Y**

12 **SLC *Molly* 167Y**
 Red • Polled • BW: 84 • WW: 777

75% • Balancer • Female • May 17 2011 • CDGV147119 • SLC167Y

CE	BW	WW	YW	MK	TM	GL	CED	SC
105	0.7	41	77	15	35	-0.9	100	0.3

SLC MASTER PLAN 134N
 SLC MASTER PLAN 191U
 SLC LACQUER 109S
 SLC MERV 12N
 SLC MOLLY 39S
 ANGUS

SLC LATIGO 118L
 BTI MS CHARLA 2191F
 SLC HEAD START 437M
 NGC PLD LACQUER 6M
 SLC FREEDOM 178F ET
 SLC HICKORY GOAL 272K
 ANGUS

Exposed to SLC Rio Grande June 30 to Sept 15

Lot 13 **SLC Black Lass 129Y**

13 **SLC *Black Lass* 129Y**
 Black • Polled • BW: 80 • WW: 714

94% • Purebred • Female • May 2 2011 • CDGV147108 • SLC129Y

CE	BW	WW	YW	MK	TM	GL	CED	SC
110	0.2	34	67	18	35	0.1	103	0.2

CES DECKA PRECISION
 CES DECKA OUTBACK 75S
 CES DECKA HARPER 150L

SLC MASTER PLAN 134N
 SLC BLACK LASS 247U
 AR BLACK LASS 28G

CES DECKA QUEST 54M
 CES DECKA CRIMSON TIDE 31K
 WGG FLASHPOINT 91F
 CES DECKA HARPER 63H
 SLC LATIGO 118L
 BTI MS CHARLA 2191F
 AR MR AR 83C
 SLC BLACK LADY 25B

Exposed to SLC Rio Grande June 30 to Sept 15



Severtson Bred Females & CATTLE



Lot 14 **SLC Lady Fanny 99Y**

14 SLC *Lady Fanny* 99Y
 Black • Polled • BW: 88 • WW: 709

50% • Balancer • Female • April 26 2011 • CDGV147106 • SLC99Y

CE	BW	WW	YW	MK	TM	GL	CED	SC
	3.3	37	65	15	33			

SLC MASTER PLAN 134N	SLC LATIGO 118L
VCR PLD VALE TOPPER 2T ET	BTI MS CHARLA 2191F
DGA MVF ROSE 106D	HYEK POLLED HOTSHOT 19Z
	DGA MVF ROSE 72A
TZ T Z JAGUAR 9J	G D A R OSCAR 711
XIT B.B.A.R. LADY FANNY 1022	TAMC T Z DAISY 6D
XIT LADY FANNY 22/94	FV F V MAXIMUM 465A
	JZO LADY FANNY MO 22'81

Exposed to SLC Rio Grande June 30 to Sept 15

Lot 15 **SLC Maid 97Y**



15 SLC *Maid* 97Y
 Black • Polled • BW: 80 • WW: 704

50% • Balancer • Female • April 26 2011 • CDGV147105 • SLC97Y

CE	BW	WW	YW	MK	TM	GL	CED	SC
	4.3	49	84	20	44			

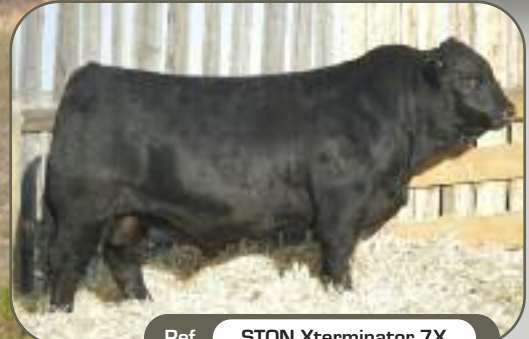
SLC MASTER PLAN 134N	SLC LATIGO 118L
VCR PLD VALE TOPPER 2T ET	BTI MS CHARLA 2191F
DGA MVF ROSE 106D	HYEK POLLED HOTSHOT 19Z
	DGA MVF ROSE 72A
JBS ATLASTA TRAVELER 8K	IMP ALBERTDA TRAVELER 416
WWSF TOWAW MAID 36T	JBS ATLASTA ELLEN 2H
WWSF WILLOWDALE MAID 15M	LEACHMAN RIGHT TIME
	DBY SCA KARAMA MAID 66K

Exposed to SLC Rio Grande June 30 to Sept 15

STONE GATE *Stone Gate - Right To Flush*



Ref **STON Mis Julie 13U**



Ref **STON Xterminator 7X**



Ref **STON Taurus 20Y**

Offering the
Right to Flush

STON Miss Julie 13U



16

STON *Miss Julie 13U*

Red • Polled • BW: 77 • WW: 695 • YW: 930

94% • Purebred • Female • February 20, 2008 • CDGV128861 • STON13U

CE	BW	WW	YW	MK	TM	GL	CED	SC
108	2.5	46	85	18	41	-0.1	103	0.2

WGG HUMBUG 72H
EV HUMDINGER 119M
WGG JANET 75J

GKT BOO BOO 155E
ATC GOLD STAR PLD JULIE 80J
ATC GOLD STAR 120B

SINK POLLED GUZZLER D82
WGG MISS WIND 29X
KHR GENES SUR'NUF 69G
WGG SHAKER 141G
FHG FLYING H CADILLAC 184C
CCD X55
ATC GOLD STAR 4W
ATC GOLD STAR ET 74X

In our house, she is affectionately known as the money cow, because she has made more than her fair share! Consistency and quality are what pay the bills in this industry, and only because it is the 40th Anniversary year have we decided to share our best! Her first calf, STON Xterminator 7X is the \$45K valued herd sire owned with Severson Land & Cattle and Pearson Cattle Company in South Dakota. Her second calf, the \$9K STON Taurus 20Y owned by George Simpson, and the third calf....well he might be for sale in March but the verdict is still out. She has been flushed once, and produced 16 number one embryos and bred back the first cycle. On offer in this flush, is the opportunity to flush STON 13U to the bull of your choice. Stone Gate will guarantee 6 embryos with 2 pregnancies at 70 days, and is more than happy to help with sire selection if you wish. She is due to calve at the end of February and will be available to flush as soon as possible afterwards.

Stone Gate Open Heifers

STONE GATE FARM



Lot 17 **STON Miss Paradee 30Z**

17 STON *Miss Paradee* **30Z**
 Black • Polled • BW: 87 • WW: 872

94% • Purebred • Female • February 29, 2012 • CDGV146223 • STON30Z

CE	BW	WW	YW	MK	TM	GL	CED	SC
115	-0.4	40	59	19	39	-0.7	104	0.2

SLC TYE 476T ET
 VV XTRA TIME 214X
 SPG PLD SUNNY PLAIN NIKKI 17

WGG PANTHER 66P
 STON MISS PARADEE 2S
 JBM PARADEE 14N

SLC MASTER PLAN 134N
 SFL SLC MS CENTENNIAL 188C
 SPG JUDGE 101J
 SPG HAPPY DAY 6H
 WGG KICKAPOO BLACKIE 51K
 WGG LOVE LE LADY 122L
 GKT BOO BOO 155E
 JBM PARADEE 146L

Black Paradee 30Z is a special lot. She shares the same mother as STON Black Panther to Towerview Ranch and STON Underrated 7U, who is the sire of the \$45K Xterminator, Xpectation 14X to Pearson Cattle Company in South Dakota and the 2010 Bull Futurity champion. Her granddam is JBM Paradee 14N, the matriarch who started this dynasty for us. This is as consistent, and dependable as we can possibly make one, bid with the utmost of confidence! Add to this a very quiet demeanor that our 6 year old learned from all summer at junior shows. Did I mention the outcross pedigree?

Lot 18 **STON Lady Inez 5Z**



18 STON *Lady Inez* **5Z**
 Red • Polled • BW: 83 • WW: 782

94% • Purebred • Female • January 21, 2012 • CDGV146222 • STON5Z

CE	BW	WW	YW	MK	TM	GL	CED	SC
113	0.6	34	60	20	36	-1.2	104	0.1

SLC TYE 476T ET
 VV XTRA TIME 214X
 SPG PLD SUNNY PLAIN NIKKI 17

SLC MASTER PLAN 134N
 STON LADY INEZ 1W
 JBM INEZ 24T

SLC MASTER PLAN 134N
 SFL SLC MS CENTENNIAL 188C
 SPG JUDGE 101J
 SPG HAPPY DAY 6H
 SLC LATIGO 118L
 BTI MS CHARLA 2191F
 JRI HEAVY EQUIPMENT 125M3
 JBM INEZ 16L

Sired by Masterplan, she is our absolute performance heifer this year. She will be our first Inez female to be let go, and one you need to plan to own. Moderate in type, performance, and maternally driven, the epidemic of what our breed is known for! No doubt she will have a show udder, and be a front pasture female.

STONE GATE FARM *Stone Gate Open Heifers*



Lot 19 **STON Miss Kissen 31Z**

19 **STON** *Miss Kissen* 31Z

Red • Polled • BW: 82 • WW: 751

94% • Purebred • Female • March 6, 2012 • CDGV146213 • STON31Z

CE	BW	WW	YW	MK	TM	GL	CED	SC
108	0.7	32	65	16	32	0.0	99	0.1

CES DECKA PRECISION 144P
 CES DECKA OUTBACK 75S
 CES DECKA HARPER 150L

CES DECKA QUEST 54M
 CES DECKA CRIMSON TIDE 31K
 WGG FLASHPOINT 91F
 CES DECKA HARPER 63H
 LEF POLLED WHAMMOO 14E
 JBM BELLA 9D
 ATC GOLD STAR PLD HESTON 76H
 ATC GOLD STAR FAVORITE 372F

JBM SILAS 214H
 JBM KISSEN 161N
 ATC GOLD STAR PLD KISS 85K

Kissen 31Z is a very broody female who will make a great cow. She is moderate, and will certainly be a genetic treasure for years to come!

Lot 20 **VS Miss Kathryn 29Z**

20 **VS** *Miss Kathryn* 29Z

Red • Polled • BW: 78 • WW: 735

94% • Purebred • Female • February 29, 2012 • CDGV146884 • VS29Z

CE	BW	WW	YW	MK	TM	GL	CED	SC
111	-0.5	28	70	19	33	-1.1	103	0.2

CES DECKA PRECISION 144P
 CES DECKA OUTBACK 75S
 CES DECKA HARPER 150L

CES DECKA QUEST 54M
 CES DECKA CRIMSON TIDE 31K
 WGG FLASHPOINT 91F
 CES DECKA HARPER 63H
 JDPD ROLEX 151M
 HAD PRINCESS OF ALOT 407P
 SBR 2085L MARCUS P13
 VV JESTI LOU 37P

JDPD ASTRO 407S
 VV XPRT OPINION 66X
 VV TIFFANY 81T

VS 29Z is a fancy heifer who is backed by generations of hard working, productive cows. Sired by Outback, and mothered by a perfect uddered Astro daughter, she will more than pull her weight in the front pasture! 29Z you will find to be very fresh fronted, and more natural rib shape than more heifers selling this Fall. Breed her however you like because when you combine phenotype, balanced EPD's, and potent pedigree, you can't go wrong!



Eyot Valley Feature Bred Female RANCH



Lot 21 EV Kari's Humalong 8W



Ref EV Mighty Dandy 8Y



Ref EV Kari-On 8Z

21 EV *Kari's Humalong* 8W
 Red • Polled • BW: 94

94% • Purebred • Female • February 1 2009 • CDGV132017 • EV8W

CE	BW	WW	YW	MK	TM	GL	CED	SC
104	4.1	39	68	23	43	0.5	96	0.1

WGG HUMBUG 72H
 EV HUMBUGGER 306P
 ATC GOLD STAR KACKIE 5K
 SINK POLLED GUZZLER D82
 WGG MISS WIND 29X
 ATC GOLD STAR ET 64Y
 ATC GOLD STAR BLACK 229H
 BTI ELVIS 2155E
 BGK BETSY 477B
 LNR CAPSTONE 822Y
 CMP MISS IMEX CMP 19P

Safe to her April 27 AI breeding of JRI TOP RECRUIT 254U82

This gal certainly has proven herself with her first two calves. EV Mighty Dandy 8Y was one of the highest priced Gelbvieh bulls sold in Canada in 2012 and her daughter EV Kari-On 8Z will be on the show road this fall to highlight 8W's consistency. Mighty Dandy will also be out this fall with his excited owner, Trevor Burks. 8W makes clean fronted, stylish calves while adding to their thickness and growth. 8W has a tremendous pedigree that includes some of the foundations herds in the Gelbvieh breed and goes right to the heart of our program. You can be sure that EV 8W is only starting her career and will have some great ones coming up. Certainly a flush candidate!

EYOT VALLEY *Eyot Valley Feature Bred Female*



Lot 22 **EV Petunia 25P**

22

EV *Petunia* 25P

Black • Polled • BW: 74 • WW: 548 • YW: 775

94% • Purebred • Female • February 15 2004 • CD6V111161 • EV25P

CE	BW	WW	YW	MK	TM	GL	CED	SC
108	0.3	35	68	17	35	-0.2	101	0.2



Ref **EV Buster 28Z**



Ref **EV 75T Sweetheart**



GKT BUD 11G
JCGR BAR GT LOUIE 2J
049C

WGG HUMBUG 72H
EV MISSY 66M
EV 112J

WGG JUST GET-N-GO 90J
CK BLACKIE'S MARTINA 40M
WDV TOWAW MATT DILLON 214F
NGAC REMITALL FANCY FREE 94F
SINK POLLED GUZZLER D82
WGG MISS WIND 29X
KHR GENES SUR'NUF 69G
WGG GOLDEN MIA 31G

Safe to her April 29 exposure to EV RED 5X

Petunia 25P is a foundation cow that has given us tremendous calves, consistently. 25P is the dam of EV Dandy Boy 45W, Winner of the 2009 Canadian National People's Choice Bull Futurity as well as EV Miss Tunia T 75T Winner of the "Sweet Heart Classic" at Agribition in Regina Sask 2008.

Petunia moderates size, adds thickness, power and easy fleshing, but brings out style on all of her calves. Louie sired out of a Humbug daughter that had also proven herself calf after calf. 25P's calves will certainly draw interest in future sales. We will have a 25P X Recruit son out on display this fall.....the easiest calf we have ever halter broke! This year's mating should certainly be a standout as well! A flush candidate for sure!

Eyot Valley Bred Females

EYOT VALLEY RANCH

23 EV *Petunia-X* 19X

Red • Polled • BW: 92 • WW: 744

94% • Purebred • Female • February 20 2010 • CDGV1354777 • EV19X

CE	BW	WW	YW	MK	TM	GL	CED	SC
112	0.0	38	71	15	34	-0.5	101	0.2

CK RENDEVOUS 28R
 EV GEM DANDY 72T
 KGS KERIGLEN FANCIFUL GEM

JCGR BAR GT LOUIE 2J
 EV PETUNIA 25P
 EV MISSY 66M

WGG JUST GET-N-GO 90J
 CK BLACKIE'S MARTINA 40M
 WDV TOWAW MATT DILLON 214F
 NGAC REMITALL FANCY FREE 94F
 GKT BUD 11G
 O49C
 WGG HUMBUG 72H
 EV 112J

Safe to April 27 AI breeding of SGRI CONSTELLATION T310 ET

Petunia -X is directly from the Petunia matriarch, 25P and sired by one of EYOT's most influential bulls, Gem Dandy. 19X had a EV Red 5x heifer calf that stands near the top of the keeper pen. Both 25P and Gem Dandy are some of the easiest fleshing cattle we have ever come across and hopefully this will be passed on.



Lot 25 EV Miss Gem 39X

24 EV *Reann* 64R

Black • Polled • BW: 90 • WW: 490 • YW: 783

94% • Purebred • Female • February 10 2005 • CDGV122645 • EV64R

CE	BW	WW	YW	MK	TM	GL	CED	SC
106	2.5	49	86	17	42	0.6	101	0.3

JNS MR IMAGE 6E ET
 LWHF FEARLESS 25K
 JNS MISS CAROLINA POWER 25E

JNS MISS PM 19A ET
 DCSF POST ROCK BOUNCER 33G22
 "EV ""MAX M"" 29M"
 WGG EVENING CANDY 348E

JBOB BLACK IMAGE 31Y
 JNS MISS NITE TRAIN 7C ET
 JBOB CAROLINA POWER 85C
 DCSF POST ROCK BLACK SAVVY
 DCSF POST ROCK GWEN 24D2 ET
 WGG WINDY PERFECTO 112B
 WGG MISS WIND 31B

Safe to April 27 AI breeding of EV Gem Dandy 72T

Reann 64R is a real sweetheart, clean, tidy and a heck of a producer. This gal goes back to our "Bouncer" foundation cow EV Max-M 29M, who at 10 years old is still in the herd with a great udder, great feet and doing well. This LWHF Fearless daughter is a pasture standout and great EPDs.

25 EV *Miss Gem* 39X

Red • Polled • BW: 92 • WW: 638

94% • Purebred • Female • March 5 2010 • CDGV144939 • EV39X

CE	BW	WW	YW	MK	TM	GL	CED	SC
110	1.6	43	77	16	38	-0.2	102	0.2

CK RENDEVOUS 28R
 EV GEM DANDY 72T
 KGS KERIGLEN FANCIFUL GEM

DDN BRONCO BILLY 470P
 ULL MS JEMIMA 67T
 DEG JEMIMA 281J ET

WGG JUST GET-N-GO 90J
 CK BLACKIE'S MARTINA 40M
 WDV TOWAW MATT DILLON 214F
 NGAC REMITALL FANCY FREE 94F
 ELK CR BRONCO'S EDGE 904L
 DDN BELLY RIVER KRAAL 009K
 POW JETSTREAM 36B
 KGS KERIGLEN ELIZA JANE 72E

Safe to her April 27 AI service to SGRI CONSTELLATION T310 ET

Here is a deep, broody Gem Dandy daughter that certainly has a chance at some great ones. Her first heifer calf is in the keeper pen to carry on her lineage.

EYOT VALLEY *Eyot Valley Bred Females*



Lot 26 **JBM Nadia 184N**

26 **JBM Nadia 184N**
 Black • Polled • BW: 80 • WW: 595 • YW: 749

88% • Purebred • Female • March 27 2003 • CDGV95463 • JBM184N

CE	BW	WW	YW	MK	TM	GL	CED	SC
103	2.3	37	58	18	37	-0.5	104	-0.1

CTR ECHO 575E
 BTI ECHO 2187J ET
 BAG MISS 42A

HPL HIGH PLAINS PI 808X
 JBM NADINE 11J
 JBM NATALIE 21G

MCJ BLACK HUSKER
 CTR CEDAR TOP'S MISS POWER
 BFR ANDY
 BAG MS PLD EAGLE 95X
 GAA MAGNUM P.I.
 HPL MISS PRIME RATE 54U
 MIL HURRICANE 2B
 ANGUS

Safe to April 27 AI breeding of EV MUSCLE MAN 72M

184N is a deep, muscular black from Milne's dispersal that certainly catches your eye. This stylish gal has a "Dandy" heifer in our keeper heifer pen; definitely a cow family we want to keep working with. Her "Collateral" heifer from the previous year is also certainly staying.

27 **NGC Gracie 41S**
 Red • Polled • BW: 72 • WW: 607

94% • Purebred • Female • January 28 2006 • CDGV116934 • NGC41S

CE	BW	WW	YW	MK	TM	GL	CED	SC
116	-1.8	27	59	11	25	-2.5	101	0.2

WGG FLASHPOINT 91F
 WGG JUST GET-N-GO 90J
 WGG MISS WIND 25B

SLC FREEDOM 178F ET
 NGC MAJESTIC ANGEL 2L
 TPG POLLED JAYNA 49J

WGG WINDY PERFECTO 112B
 ARO MS RED EDGE Z049P
 ATC GOLD STAR 13X
 HCG TRIANGLE T PAM 45P
 VAA LEACHMAN NEW DAY 205B
 BB MISS 61Y
 AMV POLLED FAR HORIZON 24F
 TPG MISS DAKOTA 37D

Safe to April 27 AI breeding of ULL TRADEMARK 32T

Gracie is an easy fleshing, consistent producer that Sarah purchased from Nicole Hollman at a Farm Fair selection sale. This WGG JUST GET-N-GO 90J daughter is deep bodied, with lots of volume that she puts into her calves.



Lot 27 **NGC Gracie 41S**

Ref **WOW Iron Man1Y**

Eryot Valley Bred Females

ERYOT VALLEY RANCH



Lot 28 EV Miss Black Dan 49X

28 EV Miss Black Dan 49X

Black • Polled • BW: 92 • WW: 674

94% • Purebred • Female • March 26 2010 • CDGV1449424 • EV49X

CE	BW	WW	YW	MK	TM	GL	CED	SC
109	1.6	46	84	15	38	-0.1	101	0.2

CK RENDEVOUS 28R
 EV GEM DANDY 72T
 KGS KERIGLEN FANCIFUL GEM

DCSF POST ROCK BOUNCER 33G2
 EV NEW MOON 87N
 WGG JUST BLACK & BOLD 107J

WGG JUST GET-N-GO 90J
 CK BLACKIE'S MARTINA 40M
 WDV TOWAW MATT DILLON 214F
 NGAC REMITALL FANCY FREE 94F
 DCSF POST ROCK BLACK SAVVY
 DCSF POST ROCK GWEN 24D2 ET
 KHR GENES U BET 19G
 ARO MS RED EDGE Z049P

Safe to April 27 AI breeding of EV RED 5X

Here is a sweetheart that is really hard to let go. This Dandy sired gal is out of a great looking "Bouncer" daughter that Kate did extremely well with in 4-H. 49X goes back to WGG JUST BLACK & BOLD 107J, the matriarch of many of our blacks.

29 EV Foxy Babe 34R

Red • Polled • BW: 84 • WW: 520

94% • Purebred • Female • February 25 2005 • CDGV137139 • EV34R

CE	BW	WW	YW	MK	TM	GL	CED	SC
107	3.2	41	77	16	37	1.1	103	0.0

WGG HUMBUG 72H
 EV HUMDINGER 119M
 WGG JANET 75J

WGG GRAND SLAM 15G
 EV 26K
 WGG FOXY BABE 112F

SINK POLLED GUZZLER D82
 WGG MISS WIND 29X
 KHR GENES SUR'NUF 69G
 WGG SHAKER 141G
 JEB BCC POLLED HAWK 28A
 WGG MISS WIND 8B
 WGG WINDY DINARO 113D
 WGG MISS WIND 58D

Safe to April 27 AI service to EV Gem Dandy 72T

Here is your chance on a EV Humdinger 119M daughter! Stone Gate Farm has had great success with Humdinger offspring and this gal exemplifies the "Dinger" stamp...easy fleshing, deep bodied with lots of muscle. Foxy's bull calf for this year proves what she does consistently, he should be out and about this fall for display. Her daughter, EV53U is also in the sale. Again, would certainly look forward to this year's mating.

Lot 29 EV Foxy Babe 34R



Ref EV Zippo 11Z

EYOT VALLEY Bred Females



Lot 30 EV Fancy Bug 66U

30 EV *Fancy Bug* 66U
 Red • Polled • BW: 94 • WW: 640

94% • Purebred • Female • April 1 2008 • CDGV144933 • EV66U

CE	BW	WW	YW	MK	TM	GL	CED	SC
108	2.0	35	66	21	39	0.0	99	0.0

WGG HUMBUG 72H
 EV HUMBUGGER 306P
 ATC GOLD STAR KACKIE 5K

WDV TOWAW MATT DILLON 214F
 KGS KERIGLEN FANCIFUL GEM
 NGAC REMITALL FANCY FREE 94F

SINK POLLED GUZZLER D82
 WGG MISS WIND 29X
 ATC GOLD STAR ET 64Y
 ATC GOLD STAR BLACK 229H
 JWR GUNSMOKE 32Z
 GLG WENDY 36B
 VAA LEACHMAN NEW DAY 205B
 NGAC REMITALL MIS DENVER 196D

Safe to her April 10th natural breeding to EV HOLY SMOKER 41Y

Another one hard to let go.....this gal is from Gem Dandy's dam and goes back to the Humbug son, Humbugger 306P, two amazing standouts at EYOT. 66U had a super thick, deep bull calf last year, however we lost him just after weaning. This years "Meeko" son shows what Fancy Bug can do.

31 EV *Sunny* 1U
 Red • Polled • BW: 60

94% • Purebred • Female • January 25 2008 • CDGV143684 • EV1U

CE	BW	WW	YW	MK	TM	GL	CED	SC
100	2.6	40	70	14	34	-0.5	97	0.4

JCGR BAR GT LOUIE 2J
 WV RALLY LOU 16R
 LTC RIDGE STAR PLD KELLY 59K

SLC LATIGO 118L
 SPG SUNNY PLAIN DIXIE 607S
 MWH MISS DIXIE 16J

GKT BUD 11G
 049C
 ATC GOLD STAR POLLED 5D
 LTC RIDGE STAR 236D
 RTC ATLAS 712G
 DJD VALLEY POLLED CLOUD 60X
 MSW MWH POLLED LOTTO 24E
 DGA MVF BEATRICE 68D

Safe to her April 27 AI service to EV Gem Dandy 72T

This cherry red gal is another consistent producer with some interesting breeding behind her. Would certainly look forward to her Gem Dandy breeding, could work out very well.



Lot 31 EV Sunny 1U



Ref EV KANSAS 28Y

Eyot Valley Bred Females

32 EV Lady Hum 57T

Red • Polled • BW: 94 • WW: 756 • YW: 1188

94% • Purebred • Female • April 27 2007 • CDGV132019 • EV57T

CE	BW	WW	YW	MK	TM	GL	CED	SC
106	3.6	43	79	21	43	1.3	101	

EV HUMDINGER 119M
 EV HUMMER 21R
 KDK GREENVIEW KARI 63J
 KHR GENES SUR'NUF 69G
 EV 121J
 WGG GOLDEN BLISS 97G

WGG HUMBUG 72H
 WGG JANET 75J
 VDWW POLLED INNOVATOR 477G
 GFA BERGEN CARRIE 305C
 KHR OPPORTUNITY
 KHR 552E
 WGG WINDY DOMINO 43D
 WGG MISS WIND 29X

Safe to her April 27 AI service to EV Red 5X

Lady Hum is out of a Humdinger son, "Hummer" out of KDK 63J. Hard to let go of this easy fleshing gal, with her pedigree, however, luckily we have a 2011 and a 2012 daughter to keep back. Another interesting breeding that could prove quite profitable....Vet believes pregnancy to be a bull calf.



Lot 32 EV Lady Hum 57T

33 EV Foxy 53U

Red • Polled • BW: 84 • WW: 567

94% • Purebred • Female • March 15 2008 • CDGV137140 • EV53U

CE	BW	WW	YW	MK	TM	GL	CED	SC
113	0.7	38	70	12	31	0.2	105	0.1

WGG JUST GET-N-GO 90J
 CK RENDEVOUS 28R
 CK BLACKIE'S MARTINA 40M

EV HUMDINGER 119M
 EV FOXY BABE 34R
 EV 26K

WGG FLASHPOINT 91F
 WGG MISS WIND 25B
 WGG KICKAPOO BLACKIE 51K
 CK MISS BRITAIN 16-3 3E
 WGG HUMBUG 72H
 WGG JANET 75J
 WGG GRAND SLAM 15G
 WGG FOXY BABE 112F

Safe to her April 27 service to SGRI CONSTELLATION T310 ET

Another gal with "Dinger" in her background along with Gem Dandy's sire. Certainly an easy keeper...a trait that we value highly at EYOT.

Lot 33 EV Foxy 53U



EYOT VALLEY BRED FEMALES

Eyot Valley Bred Females



Ref **EV DANDY-V 54X**

Son of Lot 34 - VV Tilda 157T



Ref **EV BIG DADDY OH 25Y**

Son of Lot 33 - EV Dam Good Black Ruby 29U

33 EV Dam Good Black Ruby 29U

Black • Polled • BW: 92 • WW: 956

94% • Purebred • Female • April 22 2008 • CDGV128031 • EV29U

CE	BW	WW	YW	MK	TM	GL	CED	SC
105	2.9	52	94	21	47	-0.9	103	0.4

VCR MR PLD VALE COUNTRY 18M
VCR RUBEN 7R
VCR MS PLD BLK VALE LEXI 46L

LWHF FEARLESS 25K
EV REANN 64R
"EV ""MAX M"" 29M"

VCR MR PLD VALE COUNTRY 11J
DTJ JANITA POWER 34J ET
DDM MR SHERMAN TANK
KFW TWIN STAR FREDA 910F
JNS MR IMAGE 6E ET
JNS MISS CAROLINA POWER 25E
DCSF POST ROCK BOUNCER 33G2
WGG EVENING CANDY 348E

Safe to April 27 AI breeding of EV Gem Dandy 72T

Here is an example of what Reann 64R can do. This gal goes back the Vale Country7R bull and her bull was one of the high sellers this year. Believe her current breeding should be real interesting. Daughter of Lot 29, EV Foxy Babe 34R

32

GCC Lory 36X

Red • Polled • BW: 90 • WW: 584

94% • Purebred • Female • February 7 2012 • CDGV136103 • GCC36X

CE	BW	WW	YW	MK	TM	GL	CED	SC
97	4.1	43	76	8	30	-0.9	95	0.2

BTI EXTRA 2106K ET
STON JBM SHOWDOWN 3S
ATC GOLD STAR PLD JASSY 16J

CES DECKA FP 74M ET
GCC LORY 197T
GCC PLD LORY 172L

FHG FLYING H EXTRA 150D
BTI LADY GRANITE 2001E ET
ATC GOLD STAR POLLED 5D
ATC GOLD STAR PLD GEM 158G
WGG FLASHPOINT 91F
SLC ANITA ET 232F
VDG VAN DEAU BLUE SUEDE SHOE
GCC PLD GERBER 50G

Safe to her April 27 AI service to EV MUSCLE MAN 72M

We bought this fancy little heifer at the 2011 Wishlist Sale and Lory didn't disappoint us. She calved right up at the front of the herd and seems to have bred back just as quickly. Her AI service should be quite interesting along with the pedigree this gal has.

34

VV Tilda 157T

Red • Polled • BW: 76 • WW: 621 • YW: 857

75% • Balancer • Female • March 14 2007 • CDGV121308 • VV157T

CE	BW	WW	YW	MK	TM	GL	CED	SC
107	-0.2	36	62	20	38	-1.5	103	0.3

DEG MONAHAN 293M
DEG PESO 286P
DEG JYSSICA 286J

MWH POLLED KONRAD 9K
VV PANDORA 121P EV 26K
ANGUS

JHL LCHMN Z138 8005D
RCG DEG KARIN 293K
DBC MR MODERATOR 9F
DEG DAFFODIL 96D
BTI GIZMO 2002H
MWH CONNIE 8H

Safe to her April 8th breeding to EV Holy Smoker 41Y

This V&V cow was purchased as a heifer and done a great job, her EV 54X certainly stood out in the bull pen.

Sunberry Valley Feature Open Heifer



Lot 35

SUN Tilly 20Z

35

SUN *Tilly* 20Z

Red • Polled • BW: 84 • WW: 646

50% • Balancer • Female • February 21, 2012 • CDGV147234 • SUN20Z

CE	BW	WW	YW	MK	TM	GL	CED	SC
	0.5	31	61	14	29			

VCR PLD VALE TOPPER 2T ET
 SLC OLD SCHOOL 120W
 SFL SLC SUE 325P

SCL RED SLC TOP GUN 62M
 POG RED POG TILLY 2R
 POG RED POG TILLY 15N

SLC MASTER PLAN 134N
 DGA MVF ROSE 106D
 SLC RIP 121K
 SFL SCOTSWOOD SUE 214G
 YYY RED YY 408D TOP GUN 614F
 SCL RED SLC FAVORITE 97A
 RED BADLANDS BONUS 702
 UAS RED TASSEL TILLY 119D

SUNBERRY VALLEY OPEN HEIFERS

Sunberry Valley Open Heifers



Lot 36 **SUN Wild Rose Misty 4Z**

36 SUN *Wild Rose Misty* 4Z

Red • Polled • BW: 90 • WW: 693

50% • Balancer • Female • February 13, 2012 • CDGV147232 • SUN4Z

CE	BW	WW	YW	MK	TM	GL	CED	SC
	0.5	31	61	14	29			

VCR PLD VALE TOPPER 2T ET
SLC OLD SCHOOL 120W
SFL SLC SUE 325P

SLC MASTER PLAN 134N
DGA MVF ROSE 106D
SLC RIP 121K
SFL SCOTSWOOD SUE 214G
MMS RED BLUE SPRUCE PRIME CUT 216J
MMS RED BLUE SPRUCE LARKABA 101J
MMS RED BLUE SPRUCE CADILLAK 38Z
PRW RED WILD ROSE MISTY 7A

YT RED SMOKY PRIME 99M
PRW RED WILD ROSE MISTY 17R
PRW RED WILD ROSE MISTY 16C

37 SUN *Pride* 28Z

Red • Polled • BW: 76 • WW: 665

50% • Balancer • Female • February 26, 2012 • CDGV147233 • SUN28Z

CE	BW	WW	YW	MK	TM	GL	CED	SC
	0.5	31	61	14	29			

VCR PLD VALE TOPPER 2T ET
SLC OLD SCHOOL 120W
SFL SLC SUE 325P

JSC RED JSC SAN JOSE 2K
POG RED POG PRIDE 31N
POG RED POG PRIDE 143L

SLC MASTER PLAN 134N
DGA MVF ROSE 106D
SLC RIP 121K
SFL SCOTSWOOD SUE 214G
RED ROCK CREEK TREK
JSC RED JSC TESS 2Y
CCV RED CCVR GRANDEUR 7G
DANC RED DAN'S PRIDE 1'93

38 SUN *Iona* 51Z

Red • Polled • BW: 76 • WW: 665

50% • Balancer • Female • March 15, 2012 • CDGV147231 • SUN51Z

CE	BW	WW	YW	MK	TM	GL	CED	SC
105	0.9	32	63	15	31	-0.3	99	

VCR PLD VALE TOPPER 2T ET
SLC OLD SCHOOL 120W
SFL SLC SUE 325P

RNC RED TG NEWSPRINT 62M
TG RED TG IONA 161S
RNC RED TG IONA 48N

SLC MASTER PLAN 134N
DGA MVF ROSE 106D
SLC RIP 121K
SFL SCOTSWOOD SUE 214G
LMP RED BRYLOR NEW TREND 22D
CMW RED M W SERENA 70C
XGB RED CR HEAVY 100L
RNC RED TG IONA 7K

Sunberry Valley Red Angus Bred Females



Lot 39 Red Sunberry Samaria

39 Red *Sunberry Samaria*
Red Angus

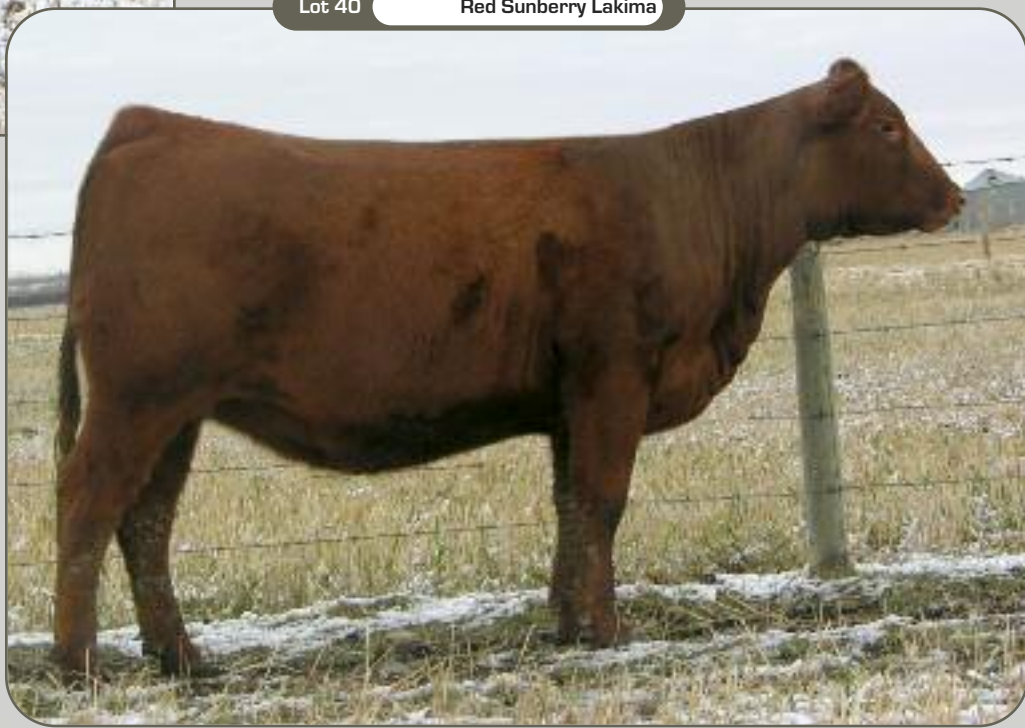
Purebred • Female • March 13 2011 • 1656730 • SUN82Y

CE	BW	WW	YW	MK	TM	GL	CED	SC
----	----	----	----	----	----	----	-----	----

- | | |
|---------------------------|--------------------------------|
| RED SLC STORM 225P | RED YY STORM 901J |
| RED SLC STORM 245T | RED SLC PRALEE 188G |
| RED SLC CHEROVIANN 73N | RED GOLD-BAR KING V415 107K |
| | RED SLC CHEROVIANN 43K |
| RED SMOKY PRIME 99M | RED BLUE SPRUCE PRIME CUT 216J |
| RED WILD ROSE SAMARIA 2R | RED BLUE SPRUCE LARKABA 101J |
| RED WILD ROSE SAMARIA 52B | RED BLUE SPRUCE CADILLAK 38Z |
| | RED BLUE SPRUCE SAMARIA 40L |

Exposed to Six Mile Full Tilt 869W May 6 to July 15

Lot 40 Red Sunberry Lakima



40 Red *Sunberry Lakima*
Red Angus

Purebred • Female • March 31 2011 • 1656738 • SUN89Y

CE	BW	WW	YW	MK	TM	GL	CED	SC
----	----	----	----	----	----	----	-----	----

- | | |
|--------------------------|--------------------------------|
| RED SLC STORM 225P | RED YY STORM 901J |
| RED SLC STORM 245T | RED SLC PRALEE 188G |
| RED SLC CHEROVIANN 73N | RED GOLD-BAR KING V415 107K |
| | RED SLC CHEROVIANN 43K |
| RED SSS BUST'N 596F | RED LCC HEAVEN OR BUST1000B |
| RED POG LAKIMA 14N | RED SSS MISS VALENTINE 344X |
| RED FLY AWAY HONORA 139H | RED REMINGTON'S RED DRIVE 106D |
| | RED TOWAW LAKIMA 134D |

Exposed to Six Mile Rawhide 222X May 6 to July 15

SUNBERRY VALLEY RANCH

Sunberry Valley Red Angus Open Heifers



Lot 41 Red Sunberry Maxine 13Z

41 Red Sunberry Maxine 13Z

Red Angus

Purebred • Female • February 17, 2012 • 1703976 • SUN13Z

CE	BW	WW	YW	MK	TM	GL	CED	SC
----	----	----	----	----	----	----	-----	----

RED 6 MILE FULL THROTTLE 171T
 RED SIX MILE FULL TILT 869W
 RED EKW REBELLO 602S

RED YY VOYAGEUR 796T
 RED YY MAXINE 917W
 RED YY MAXINE 771T

RED TER-RON FULLY LOADED 540R
 RED SIX MILE WITZEL 360J
 RED SIX MILE MASTERMIND 854M
 RED M DOUBLE B REBELLO 57P
 RED YY VOYAGEUR 908K
 RED BAR-X LADY CLIPPER 93J
 RED YY RAMBLER 322N
 RED YY MAXINE 421P

Lot 42 Red Sunberry Gravity Miss



42 Red Sunberry Gravity Miss

Red Angus

Purebred • Female • February 21, 2012 • 1703977 • SUN21Z

CE	BW	WW	YW	MK	TM	GL	CED	SC
----	----	----	----	----	----	----	-----	----

RED 6 MILE FULL THROTTLE 171T
 RED SIX MILE FULL TILT 869W
 RED EKW REBELLO 602S

RED SIX MILE SMOKIN JO 810S
 RED VIKSE DORA 136U
 RED EGGEN GRAVITY MISS 16P

RED TER-RON FULLY LOADED 540R
 RED SIX MILE WITZEL 360J
 RED SIX MILE MASTERMIND 854M
 RED M DOUBLE B REBELLO 57P
 RED TOWAW INDEED 104H
 RED SIX MILE WITZEL 360J
 RED EGGEN GRAVITY 28J
 RED LEN-BAR DESIGN DORA 53C

Sunberry Valley Red Angus Open Heifer



Lot 43 Red Sunberry Heather 40Z

43 Red Sunberry Heather 40Z

Red Angus

Purebred • Female • March 5, 2012 • 1703979 • SUN40Z

CE	BW	WW	YW	MK	TM	GL	CED	SC
----	----	----	----	----	----	----	-----	----

RED 6 MILE FULL THROTTLE 171T	RED TER-RON FULLY LOADED 540R
RED SIX MILE FULL TILT 869W	RED SIX MILE WITZEL 360J
RED EKW REBELLO 602S	RED SIX MILE MASTERMIND 854M
	RED M DOUBLE B REBELLO 57P
RED SIX MILE SAKIC 832S	RED SIX MILE AVIATOR 217P
RED SIX MILE HEATHER 761W	RED SIX MILE SIERA 257P
RED SIX MILE HEATHER 154T	RED TOWAW INDEED 104H
	RED SIX MILE HEATHER 869M

Selling...

**20 Gelbvieh x Angus Bred Yearling
Commercial Heifers - Bred to Calving
Ease Black Angus Bulls
Due to Calve April - May 2013
Will Be Selling in Groups of 5!**

General Information...

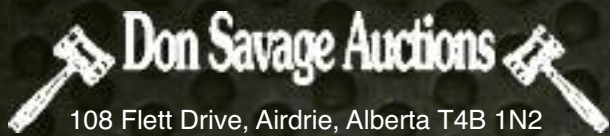
TERMS OF SALE: Are cash or cheque at par, payable to the clerks of the Sale on sale day. U S funds will be accepted at the current rate of exchange. No release will be given until satisfactory settlement has been made. Full payment shall constitute a final sale and then registration papers will be transferred.

HEALTH: All Sale cattle meet the Canadian Health standards. Foreign buyers are responsible for knowing the current Health standards of their country.

GUARANTEE: All Sale cattle are guaranteed under the terms and conditions of Sale as recommended by the Canadian Gelbvieh Association.

MAIL BIDS: If you are unable to attend the Sale, but wish to make a purchase, please feel free to contact any of the Sales Staff or Don Savage Auctions and your order will be handled in a professional manner.

INSURANCE: Ownership commences to the purchaser as soon as the animal is sold. Insurance agents will be present sale day to look after your insurance requirements.



108 Flett Drive, Airdrie, Alberta T4B 1N2
Phone: 403/948-3520 Fax: 403/948-2917
Website: www.donsavageauctions.com
Email: don@donsavageauctions.com

