



SEVERTSON **TOP**
Cut
FEMALE SALE
2011





SUNDAY

DECEMBER 4, 2011

AT THE FARM • 1 PM

INNISFAIL, ALBERTA, CANADA

Welcome...

On behalf of everybody at Severtson Land and Cattle I would like to welcome you to our Top Cut Female Sale. What a difference a year makes. Agriculture in general looks more positive than it has for years. The cattle market is stronger than ever. This year there are donor quality cows; flush opportunities and semen packages on our new herd bull; show heifer prospects and "Top Cut" bred heifers. Selling as well will be 50 red and black commercial bred heifers. We would like to welcome Stone Gate Farm, Darrell and Leila Hickman and family, as guest consignors.

Sincerely,

Scott & Lisa Severtson



SCOTT & LISA SEVERTSON
(403) 224-3756 • (403) 358-4676
RR #2, INNISFAIL, AB T4G 1T7
EMAIL: slcgeb@explornet.com
www.severtsoncattle.com



SUNDAY
DECEMBER 4, 2011

AT THE FARM • 1 PM • INNISFAIL, ALBERTA, CANADA

Sale Day Phones...

403.224.3756 - Office 403.803.4434 - Don
403.358.4676 - Scott 780.581.4510 - Darrell

Sale Staff...

Don Savage, Auctioneer 403.948.3520
Mark Stock, Ringman 403.357.8104
Craig Flewelling, Ringman 403.224.2111

Sale Accommodations...

R & R Inn & Suites, Innisfail, AB (403) 227-2214
Best Western Innisfail Inn, Innisfail, AB (403) 227-4405
Highwayman Motor Inn, Innisfail, AB (403) 227-6001

Hospitality...

Come early and join us for complimentary lunch at noon

Catalog...

Designed and Published by Prime Cut Publishing, Kim Matthews
Photos by Don Savage Auctions
A downloadable version of the catalog can be found at
www.donsavageauctions.com

Viewing...

Viewing of the sale cattle is welcome prior to the sale. Please call Scott to arrange a convenient time.

Sale Location...

Severtson Land & Cattle, Innisfail Alberta - From the Bowden turn off approximately 1 miles east to Range Road 10 (Police Dog Training sign); 2 miles north; at the end turn east and go 1/2 mile to SLC

Guest Consignors...

Stone Gate Farm

Darrell & Leila Hickman
RR # 2 Vermilion, AB T9X 1Y7
780.581.0077 Cell 780.581.4510



Delivery...

We will assist in arranging delivery as quickly as possible after the sale. Many reliable livestock truckers are based in the area. All deliveries are the purchasers risk. We recommend that you insure your purchases.

General Information...

TERMS OF SALE: Are cash or cheque at par, payable to the clerks of the Sale on sale day. U S funds will be accepted at the current rate of exchange. No release will be given until satisfactory settlement has been made. Full payment shall constitute a final sale and then registration papers will be transferred.

HEALTH: All Sale cattle meet the Canadian Health standards. Foreign buyers are responsible for knowing the current Health standards of their country.

GUARANTEE: All Sale cattle are guaranteed under the terms and conditions of Sale as recommended by the Canadian Gelbvieh Association.

MAIL BIDS: If you are unable to attend the Sale, but wish to make a purchase, please feel free to contact any of the Sales Staff or Don Savage Auctions and your order will be handled in a professional manner.

INSURANCE: Ownership commences to the purchaser as soon as the animal is sold. Insurance agents will be present sale day to look after your insurance requirements.

Selling...

• POLLED RED BLACK

- Bred Mature Females • Bred Heifers • Semen Package
- Calendar Year Heifer Calves including the heifer calves from SLC's fall show string
- 50 yearling commercial Gelbvieh x Angus heifers bred to calving ease Black Angus sires

Welcome...

Welcome to Severtson Land and Cattle 2nd Top Cut Female Sale with guest consignor Stone Gate Farm. What an awesome sale offering. This group of females is definitely one of the best seed stock genetic basis in the Gelbvieh breed. Scott and Lisa have been breeding Gelbvieh for many years and they have the cow herd to back it up. These are the female genetics that allow Severtson Land & Cattle to have one of the top bull sales each and every year. The same cow herd has produced and will continue to produce a number of National Champions in both the bull and female divisions.

This year's sale includes the outstanding Gelbvieh genetics bred in the Stone Farm program. They are breeding some of the top individuals in the Gelbvieh breed. Stone Gate Farm sold one of the strongest sets of yearling bulls with fantastic results at their Bull Sale this past spring. These females are of the same top bloodlines.

Times have changed in the beef industry. It really has not come too soon. The cattle that are being sold this fall will definitely add value as the beef industry continues its upswing. The commercial beef industry is very strong with producers realizing top value for their product. Gelbvieh genetics will assist these producers achieving the highest market value.

If you have any questions please contact Scott, Darrell or myself. If you are interested in purchasing individuals but are unable to attend the sale on December 4 please contact Don Savage Auctions and your order will be handled in a professional manner.

Yours truly,

Don Savage



Sale Management...



108 Flett Drive, Airdrie, Alberta T4B 1N2
Phone: 403/948-3520 Fax: 403/948-2917
Website: www.donsavageauctions.com
Email: don@donsavageauctions.com

SEVERTSON LAND & CATTLE

Severtson Feature Bred Female



122R, a feature lot, is one of the top cows at Severtson Land and Cattle. She is from the top cow family at SLC. The Anita cow family all goes back to BB 61Y. 122R has been a top producer; she is the dam of Anita 149U who was Reserve Junior Champion at the National Show in 2009. We also sold a daughter last year to Jason Janzen. Her grandmother 19F sold for \$20,000 for half interest to TJB Gelbvieh and was a past National Champion. Selling full interest and possession, retaining one flush at our cost.

Lot 1 SLC Anita 122R



1

SLC Anita 122R

Red • Double Polled • BW: 80 • WW: 614

94% • Purebred • Female • March 2 2005 • PD111691 • SLC122R

CE	BW	WW	YW	MK	TM	GL	CED	SC
105	2.4	41	76	12	33	-1.9	103	0.3

P/E July 14 to September 20, 2011 to SLC Touchdown 82W PD 136016

SLC FREEDOM 178F ET
 VV NORBERT 37N
 VCR MS VALE HOPE 26H

SLC FREEDOM 178F ET
 SLC ANITA 106L ET
 SLC ANITA 19F ET

VAA LEACHMAN NEW DAY 205B
 BB MISS 61Y
 XZR CANADIAN HI PLAINS
 BB MISS 136A
 VAA LEACHMAN NEW DAY 205B
 BB MISS 61Y
 HHF POLLED SUMMIT 648U
 BB MISS 61Y

SEVERTSON LAND & CATTLE

Severtson Productive Bred Cows



Lot 2 SLC Lora C 299P



2

SLC *Lora C* 299P

Black • Double Polled • BW: 88

94% • Purebred • Female • April 5 2004 • PD103995 • SLC299P

CE	BW	WW	YW	MK	TM	GL	CED	SC
102	2.6	33	57	13	30	-1.1	98	0.4

SLC FULLER 84F ET
SLC RIP 121K
SLC MISS FIRE SMOKE 78F

SLC EMPIRE 41E
AR LORA C 25H
AR ANCHORS LADY 19E

HHF POLLED SUMMIT 648U
BB MISS 61Y
JWR GUNSMOKE 32Z
GKR 117C
KCF BENNETT PREMIER Z104
YHR 54Y
SLC CONTENDER 23C
AR MISS AR 19B

P/E July 14 to September 20, 2011 to SLC Touchdown 82W PD 136016



3

SFL *Sue* 304P

Black • Double Polled • BW: 88

94% • Purebred • Female • April 6 2004 • PD103996 • SFL304P

CE	BW	WW	YW	MK	TM	GL	CED	SC
102	3.4	33	58	16	33	-0.6	99	0.4

SLC FULLER 84F ET
SLC RIP 121K
SLC MISS FIRE SMOKE 78F

PCCI MR CENTENNIAL 083Z
SFL SUE 120B
SFL SCOTSWOOD SUE 8Y

HHF POLLED SUMMIT 648U
BB MISS 61Y
JWR GUNSMOKE 32Z
GKR 117C
KKC CENTENIAL 73X
PCCI 95U
SRE CHARLIE BROWN 54W
SFL SCOTSWOOD SUE 15T

P/E July 14 to September 20, 2011 to SLC Touchdown 82W PD 136016

Lot 3

SFL Sue 304P



SEVERTSON LAND & CATTLE

Severtson Productive Bred Cows



Lot 4 **SLC Rebello 95T**



SLC *Rebello* 95T

Red • Double Polled • BW: 114 • WW: 609

94% • Purebred • Female • February 6 2007 • PD124667 • SLC95T

CE	BW	WW	YW	MK	TM	GL	CED	SC
87	7.8	50	88	9	34	0.1	96	0.3

TJB JAGERMEISTER 229M - ET
SLC JAGERMEISTER 40R
SFL SLC CHOTEAU SUE 95H

DTJ HEAVY FIRE POWER ET 41H
SLC REBELLO 184K
SLC REBELLO 191F

BTI RED ALERT 2077K
59D5 JASMINE 177G ET
BTI CHOTEAU 2135C
SFL SUE 120B
NGAC REMITALL FIRE POWER 101F
BB MISS 61Y
XZR XZ COPPER 301C
SLC REBELLO 113A

P/E July 14 to September 20, 2011 to SLC Roy Bean 141U PD 128362



SLC *Lass* 51W

Red • Double Polled • BW: 61 • WW: 642

94% • Purebred • Female • April 11 2009 • PD136068 • SLC51W

CE	BW	WW	YW	MK	TM	GL	CED	SC
114	-1.3	38	68	14	33	-2.1	105	0.3

TJB JAGERMEISTER 229M - ET
SLC JAGERMEISTER 40R
SFL SLC CHOTEAU SUE 95H

SLC HEAD START 437M
SLC LASS 189S ET
SLC MISS BLACK LASS 120H

BTI RED ALERT 2077K
59D5 JASMINE 177G ET
BTI CHOTEAU 2135C
SFL SUE 120B
NGAC REMITALL PLD EXCEL 232E
SFL SLC CHOTEAU SUE 95H
XZR C342 (STUBBY)
SLC BLACK LASS 98D

P/E July 14 to September 20, 2011 to SLC Roy Bean 141U PD 12836

Lot 5 **SLC Lass 51W**



SEVERTSON LAND & CATTLE

Exclusive Semen Packages



From the day he was born, he has been a tremendous individual. He is by far the best bull calf we have raised at Stone Gate and so far STON Xterminator 7X is unknown to the world, with the exception of 3 Canadian breeders. I can confidently say, he is the easiest fleshing, thickest Gelbvieh bull I have ever seen, and somehow we are lucky enough to be a part of owning him! He is an outcross to most Gelbvieh Genetics, and if you are looking for a different pedigreed bull that will sire consistent quality.....well you're searching is over. He has tremendous performance EPD's, is single black, and like all great herdsires was raised by a mother who makes a difference. We feel Ston 7X will make a difference in our herd, and potentially yours! We are proud to offer an exclusive opportunity with STON 7X. On offer, are two packages of 10 straws each of semen. The first buyer will have the option to purchase one, or both packages at the same money. As well, this years buyer/s will have the option to purchase the same package at the same cost next year, and this will be the only semen offered on STON 7X. We welcome your interest and would be more than happy to visit with you about what 7X can do for your program.

Lot 6

STON Xterminator 7X



6

STON Xterminator 7X

Black • Polled • BW: 91 • WW: 846 • YW: 1417

94% • Purebred • Bull • February 2 2010 • PD135517 • STON7X

CE	BW	WW	YW	MK	TM	GL	CED	SC
104	3.4	51	90	17	43	-0.1	102	0.2

SLC MASTER PLAN 134N
STON UNDER RATED 7U
STON MISS PARADEE 2S

EV HUMDINGER 119M
STON MISS JULIE 13U
ATC GOLD STAR PLD JULIE 80J

SLC LATIGO 118L
BTI MS CHARLA 2191F
WGG PANTHER 66P
JBM PARADEE 14N
WGG HUMBUG 72H
WGG JANET 75J
GKT BOO BOO 155E
ATC GOLD STAR 120B

SEVERTSON LAND & CATTLE

Sewertson Feature Heifer Calf



Lot 7

SLC Temptation 82Y



7

SLC *Temptation* 82Y

Red • Double Polled • BW: 90

94% • Purebred • Female • April 23 2011 • PD143073 • SLC82Y

CE	BW	WW	YW	MK	TM	GL	CED	SC
103	2.5	36	68	13	31	-0.9	100	0.4

SLC MERV 12N
SLC ROY BEAN 141U
SLC 247P

DCC RIKHARDS RED 22R
GCC TEMPTATION 58T
GCC PHOENIX 68H

SLC FREEDOM 178F ET
SLC HICKORY GOAL 272K
VG VALLEY BLACKJACK JR 37H
SLC LONNIE 56L
CES DECKA FP 74M ET
LEF PLD LILLIAN 8N
KRT LAZY TV POLLED EDGE 062A
GCC PHOENIX 5F

SLC 82Y's dam came to us from Harold and Bev Milne and she has produced very well. 82Y will be in our show string at the National Show. She is very sharp fronted and thick made.

SEVERTSON LAND & CATTLE

Severtson Fancy Heifer Calves



Lot 9 SLC Pam 112Y



9

SLC Pam 112Y

Red • Double Polled • BW: 88

88% • Purebred • Female • April 29 2011 • PD143074 • SLC112Y

CE	BW	WW	YW	MK	TM	GL	CED	SC
106	1.3	37	68	13	32	-1.2	102	0.2

SLC MERV 12N
SLC ROY BEAN 141U
SLC 247P

SLC MASTER PLAN 134N
SLC PAM 81U
SLC 106R

SLC FREEDOM 178F ET
SLC HICKORY GOAL 272K
VG VALLEY BLACKJACK JR 37H
SLC LONNIE 56L
SLC LATIGO 118L
BTI MS CHARLA 2191F
ULL POWER PLAY 9N
(CDXX24225)

SLC 82Y's dam came to us from Harold and Bev Milne and she has produced very well. 82Y will be in our show string at the National Show. She is very sharp fronted and thick made.



8

SLC Anita 137Y

Red • Double Polled • BW: 92

94% • Purebred • Female • May 5 2011 • PD143075 • SLC137Y

CE	BW	WW	YW	MK	TM	GL	CED	SC
105	2.7	39	74	14	33	-1.2	101	0.4

SLC MERV 12N
SLC ROY BEAN 141U
SLC 247P

CES DECKA OUTBACK 75S
SLC ANITA 149U
SLC ANITA 122R

SLC FREEDOM 178F ET
SLC HICKORY GOAL 272K
VG VALLEY BLACKJACK JR 37H
SLC LONNIE 56L
CES DECKA PRECISION 144P
CES DECKA HARPER 150L
VV NORBERT 37N
SLC ANITA 106L ET

SLC Anita 137Y's dam was Reserve Junior Champion Female at the 2009 National Show and her dam is a daughter to the feature cow 122R. She will show along side her mother at the National Show in Edmonton.



Ref SLC Anita 149U



Lot 8 SLC Anita 137Y

SEVERTSON LAND & CATTLE

Severtson Feature Bred Heifer



Lot 10 SLC Royal Girl 28X



10

SLC Royal Girl 28X

Black • Double Polled • BW: 96

94% • Purebred • Female • April 11 2010 • PD135925 • SLC28X

CE	BW	WW	YW	MK	TM	GL	CED	SC
100	4.4	49	79	14	39	-0.1	100	0.7

P/E July 14 to October 1, 2011 to SLC Touchdown 166W PD 136058

BTI EXTRA 2106K ET
DF TUXEDO 34T ET
AR JENNY 47P

EV ARNOLD'S CHOICE 40M
EV ROYAL GIRL 31R
EV 113J

FHG FLYING H EXTRA 150D
BTI LADY GRANITE 2001E ET
AR COLE 26M
AR 63K
ARN SIR ARNOLD B921
WGG MISS WIND 33D
KHR GENES SUR'NUF 69G
WGG ENTICED 110G

SEVERTSON LAND & CATTLE

Severtson Feature Bred Heifer



Lot 11

SLC Halo 57X



11

SLC Halo 57X

Black • Double Polled • BW: 86

75% • Percentage • Female • April 19 2010 • PR135935 • SLC57X

CE	BW	WW	YW	MK	TM	GL	CED	SC
106	1.7	37	65	10	29	-0.7	103	0.4

P/E July 14 to October 1, 2011 to SLC Touchdown 166W PD 136058

BTI EXTRA 2106K ET
DF TUXEDO 34T ET
AR JENNY 47P

IMP SITZ ALLIANCE 6595
CES DECKA HALO 24S
CES DECKA HALO 12M

FHG FLYING H EXTRA 150D
BTI LADY GRANITE 2001E ET
AR COLE 26M
AR 63K
IMP SITZ TRAVELER 8180
SITZ BARBARAMERE JET 2698
JCGR BAR GT ICON 1115F
LTC RIDGE STAR HALO 217H

SEVERTSON LAND & CATTLE

Sewertson Stylish Bred Heifers



Lot 12 SLC Nashville 12X

12 SLC *Nashville* 12X
Black • Polled • BW: 90

94% • Purebred • Female • February 25 2010 • PD135983 • SLC12X

CE	BW	WW	YW	MK	TM	GL	CED	SC
103	3.4	40	67	17	37	0.0	99	0.6

RWG ROYAL RESERVE 5066
RJD BLACK VELVET 15U
KCB PINTO CREEK SHELLY 269S

KCB PINTO CREEK NASHVILLE
RJD JESSIE'S NASHVILLE 45R
CVG CYPRESS VIEW JESSIE 17J

JRI EXTRA EXPOSURE 285L71 ET
DVE DAVIDSON MS PLD BLK 107L
MGF CODE RED 6L
CVG CYPRESS VIEW KONNIE 32K
TSCC TWIN STAR LELAND 171L
CVG CYPRESS VIEW KONNIE 32K
GFA BERGEN G-MAN 736G
CVG CYPRESS VIEW FONDU 8F

P/E July 14 to October 1, 2011 to SLC Touchdown 166W PD 136058

13 SLC *Lora* 52X
Red • Double Polled • BW: 90

94% • Purebred • Female • April 19 2010 • PD135932 • SLC52X

CE	BW	WW	YW	MK	TM	GL	CED	SC
102	2.9	39	68	13	33	-1.2	99	0.4

SLC MERV 12N
SLC ROY BEAN 141U
SLC 247P

SLC RIP 121K
SLC LORA C 299P
AR LORA C 25H

SLC FREEDOM 178F ET
SLC HICKORY GOAL 272K
VG VALLEY BLACKJACK JR 37H
SLC LONNIE 56L
SLC FULLER 84F ET
SLC MISS FIRE SMOKE 78F
SLC EMPIRE 41E
AR ANCHORS LADY 19E

P/E July 14 to October 1, 2011 to SLC Touchdown 166W PD 13605

Lot 13 SLC Lora 52X



SEVERTSON LAND & CATTLE

Sewertson Stylish Bred Heifers



Lot 14 SLC Miss Hickory 67X

14 SLC *Miss Hickory* 67X

Red • Double Polled • BW: 92

94% • Purebred • Female • April 20 2010 • PD135994 • SLC67X

CE	BW	WW	YW	MK	TM	GL	CED	SC
102	3.0	40	73	14	34	-1.5	100	0.1

SLC MASTER PLAN 134N
VCR PLD VALE TOPPER 2T ET
DGA MVF ROSE 106D

SLC FREEDOM 178F ET
SLC MISS HICKORY 10R
SLC HICKORY GOAL 272K

SLC LATIGO 118L
BTI MS CHARLA 2191F
HYEK POLLED HOTSHOT 19Z
DGA MVF ROSE 72A
VAA LEACHMAN NEW DAY 205B
BB MISS 61Y
BTI GAREY 2027G
HHF HICKORY GOAL C54

P/E July14 to October 1, 2011 to SLC Touchdown 166W PD 136058

15 SLC *Molly* 59X

Black • Double Polled • BW: 86

75% • Percentage • Female • April 20 2010 • PR135979 • SLC59X

CE	BW	WW	YW	MK	TM	GL	CED	SC
104	1.3	39	66	8	28	-1.5	101	0.4

BTI EXTRA 2106K ET
DF TUXEDO 34T ET
AR JENNY 47P

SLC MERV 12N
SLC MOLLY 39S
(CDXX24609)

FHG FLYING H EXTRA 150D
BTI LADY GRANITE 2001E ET
AR COLE 26M
AR 63K
SLC FREEDOM 178F ET
BB MISS 61Y

P/E July14 to October 1, 2011 to SLC Touchdown 166W PD 136058

16 SLC *Vickie* 78X

Black • Double Polled • BW: 70

88% • Purebred • Female • April 21 2010 • PD135939 • SLC78X

CE	BW	WW	YW	MK	TM	GL	CED	SC
110	-0.4	32	52	10	26	-1.6	102	0.3

BTI EXTRA 2106K ET
DF TUXEDO 34T ET
AR JENNY 47P

BTI PRIMETIME 2166J ET
AR VICKIE 59N
AR MISS AR 8D

FHG FLYING H EXTRA 150D
BTI LADY GRANITE 2001E ET
AR COLE 26M
AR 63K
JBOB CAROLINA PRIME TIME ET
BTI MS VICKIE V 2029G ET
XZR 213B1
(CDXX12919)

P/E July14 to October 1, 2011 to SLC Touchdown 166W PD 136058

17 SLC *Rebello* 92X

Red • Double Polled • BW: 88

94% • Purebred • Female • April 22 2010 • PD135941 • SLC92X

CE	BW	WW	YW	MK	TM	GL	CED	SC
100	3.8	43	76	16	38	0.2	99	0.2

SLC MASTER PLAN 134N
VCR PLD VALE TOPPER 2T ET
DGA MVF ROSE 106D

DTJ HEAVY FIRE POWER ET 41H
SLC REBELLO 184K
SLC REBELLO 191F

SLC LATIGO 118L
BTI MS CHARLA 2191F
HYEK POLLED HOTSHOT 19Z
DGA MVF ROSE 72A
NGAC REMITALL FIRE POWER 101F
BB MISS 61Y
XZR XZ COPPER 301C
SLC REBELLO 113A

P/E July14 to October 1, 2011 to SLC Touchdown 166W PD 136058

SEVERTSON LAND & CATTLE

Sewertson Stylish Bred Heifers



Lot 18 SLC Empress 9X

18 SLC Empress 9X

Black • Polled • BW: 84

50% • Balancer • Female • February 20 2010 • PR135917 • SLC9X

CE	BW	WW	YW	MK	TM	GL	CED	SC
	-0.8	30	68	17	32			

IMP WOODHILL FORESIGHT
PJ P.J. FORESIGHT SATURN 56S
NSA MAC QUEEN MOTHER 37M

CES DECKA OUTBACK 75S
SLC EMPRESS 187U
SLC LAST EMPRESS 55R ET

IMP PAPA FORTE 1921
BON VIEW GAMMER 85
IMP G D A R TRAVELER 044
GXA LEDGES QUEEN MOTHER 9W
CES DECKA PRECISION 144P
CES DECKA HARPER 150L
SLC MASTER PLAN 134N
YHR 54Y

P/E July 14 to October 1, 2011 to SLC Touchdown 166W PD 136058

19 SLC Red Lady 105X

Red • Double Polled • BW: 84

94% • Purebred • Female • April 24 2010 • PD135948 • SLC105X

CE	BW	WW	YW	MK	TM	GL	CED	SC
106	1.4	48	77	13	37	-1.9	101	0.5

SLC JAGERMEISTER 40R
SLC TOUCHDOWN 71T
SLC FREE EMPRESS 32H

TJB JAGERMEISTER 229M - ET
SFL SLC CHOTEAU SUE 95H
SLC FREEDOM 178F ET
SLC 218F

NGAC REMITALL PLD EXCEL 232E
SLC RED LADY 124P
SLC RED LADY KRISTIN 156K

VAA LEACHMAN NEW DAY 205B
BJL CHAUTAUQUA GIRL 927Y
XZR C342 (STUBBY)
SLC RED LADY 112B

P/E July 14 to October 1, 2011 to SLC Touchdown 166W PD 136058

20 SLC Pam 127X

Black • Double Polled • BW: 87

75% • Percentage • Female • April 29 2010 • PR135953 • SLC127X

CE	BW	WW	YW	MK	TM	GL	CED	SC
107	0.6	32	55	7	23	-1.5	103	0.3

BTI EXTRA 2106K ET
DF TUXEDO 34T ET
AR JENNY 47P

FHG FLYING H EXTRA 150D
BTI LADY GRANITE 2001E ET
AR COLE 26M
AR 63K
SPUR BERETTA 703G

ULL POWER PLAY 9N
SLC 106R
(CDXX24225)

LTC RIDGE STAR PLD JANE 198J

P/E July 14 to October 1, 2011 to SLC Touchdown 166W PD 136058

21 SLC Lady 151X

Black • Double Polled • BW: 84

94% • Purebred • Female • May 6 2010 • PD135967 • SLC151X

CE	BW	WW	YW	MK	TM	GL	CED	SC
104	2.4	39	61	14	34	-0.5	101	0.5

BTI EXTRA 2106K ET
DF TUXEDO 34T ET
AR JENNY 47P

FHG FLYING H EXTRA 150D
BTI LADY GRANITE 2001E ET
AR COLE 26M
AR 63K

VG VALLEY BLACKJACK JR 37H
SLC LADY 133S
SLC RED LADY KRISTIN 156K

SLC BLACK JACK 48F ET
VG VALLEY SC SWEETIE 80D
XZR C342 (STUBBY)
SLC RED LADY 112

P/E July 14 to October 1, 2011 to SLC Touchdown 166W PD 136058

SEVERTSON LAND & CATTLE

Sewertson Stylish Bred Heifers



Lot 22 SLC Miss Top 141X

22 SLC *Miss Top* 141X
Red • Double Polled • BW: 86

94% • Purebred • Female • May 1 2010 • PD135960 • SLC141X

CE	BW	WW	YW	MK	TM	GL	CED	SC
104	2.2	42	72	19	40	-0.3	100	0.1

P/E July14 to October 1, 2011 to SLC Touchdown 166W PD 13605

23 SLC *Granite* 158X
Red • Double Polled • BW: 86

94% • Purebred • Female • May 7 2010 • PD135971 • SLC158X

CE	BW	WW	YW	MK	TM	GL	CED	SC
103	2.6	34	67	16	33	-1.0	99	0.4

P/E July14 to October 1, 2011 to SLC Touchdown 166W PD 136058

24 VV *Extremely Glamorous* 32X
Red • Double Polled • BW: 88 • WW: 610 • YW: 1103

88% • Purebred • Female • January 29 2010 • PD136284 • VV32X

CE	BW	WW	YW	MK	TM	GL	CED	SC
101	2.6	39	74	13	33	-2.1	100	0.4

P/E July14 to October 1, 2011 to SLC Touchdown 166W PD 136058



Lot 23 SLC Granite 158X

SLC MASTER PLAN 134N
VCR PLD VALE TOPPER 2T ET ———
DGA MVF ROSE 106D

SLC MASTER PLAN 134N
CDW MISS TOP 40J 337R ———
SLC 40J

SLC MERV 12N
SLC ROY BEAN 141U ———
SLC 247P

SLC HEAD START 437M
SLC GRANITE 172T ———
SLC MS GRANITE 361P

GKT BUD 11G
JCGR BAR GT LOUIE 2J ———
049C

VV RENASSANCE JESTER 79R
VV U'R JESTING MORENA 77U ———
FUN FREE MORENA 51M

SLC LATIGO 118L
BTI MS CHARLA 2191F
HYEK POLLED HOTSHOT 19Z
DGA MVF ROSE 72A
SLC LATIGO 118L
BTI MS CHARLA 2191F
XZR C342 (STUBBY)
SLC 73E

SLC FREEDOM 178F ET
SLC HICKORY GOAL 272K
VG VALLEY BLACKJACK JR 37H
SLC LONNIE 56L
NGAC REMITALL PLD EXCEL 232E
SFL SLC CHOTEAU SUE 95H
VG VALLEY BLACKJACK JR 37H
BTI MS GRANITE 2087G

GKT BOO BOO 155E
GKT KATIE
PGRS SHINING SPIRIT
041Z
VV BOODOM 5M
LTC RIDGE STAR PLD JEST 280J
SLC FREEDOM 178F ET
(CDXX21439)

STONE GATE FARM

Stone Gate Fancy Females



Lot 25 STON Miss Certain Glow 4Y

STON Miss Certain Glow 4Y

This is a great example of our Certain Glow cow family, the largest at Stone Gate Farm. In fact, this will be the first event any will have ever been offered! This nicely balanced female is loaded with performance, and backed by maternal excellence. When you consider attributes like soundness, power, body and femininity, this heifer rises to the top!

STON Miss Melanie 18Y

The Melanie cow family is a new development for us and started from an embryo purchase at Agribition. We should not let this heifer go, however we wanted to offer our best! She is dark red, great haired, and did I mention her brother sold this spring as a breeder bull to South Dakota? Close your eyes and wave blindly, she will make you money no matter what the purchase price is!

25 STON Miss Certain Glow 4Y

Red • Double Polled • BW: 72 • WW: 776

94% • Purebred • Female • January 18 2011 • PD142826 • STON4Y

CE	BW	WW	YW	MK	TM	GL	CED	SC
107	0.6	33	68	15	31	-1.4	100	0.2

SLC FREEDOM 178F ET
STON FREELANCE ET 6U
ATC GOLD STAR 96E

EV HUMDINGER 119M
STON MISS CERTAIN GLOW 21W—
STON MS CERTAIN GLOW 19T

VAA LEACHMAN NEW DAY 205B
BB MISS 61Y
ATC GOLD STAR AUSTRIA 10A
ATC GOLD STAR 21B
WGG HUMBUG 72H
WGG JANET 75J
WGG PANTHER 66P
JRI MS CERTAIN GLOW 253M63

26 STON Miss Melanie 18Y

Red • Double Polled • BW: 84 • WW: 710

94% • Purebred • Female • February 15 2011 • PD142833 • STON18Y

CE	BW	WW	YW	MK	TM	GL	CED	SC
107	2.1	36	79	13	31	-1.6	99	0.3

EV HUMDINGER 119M
STON WINSTON 6W—
STON MS CERTAIN GLOW 2T ET

SLC FREEDOM 178F ET
STON MISS MELANIE ET 9U—
ATC GOLD STAR 96E

WGG HUMBUG 72H
WGG JANET 75J
NGAC REMITALL PLD EXCEL 232E
JRI MS CERTAIN GLOW 253M63
VAA LEACHMAN NEW DAY 205B
BB MISS 61Y
ATC GOLD STAR AUSTRIA 10A
ATC GOLD STAR 21B

Stone Gate Fancy Females

STONE GATE FARM



Lot 27 **STON Miss Rosalie 13Y**

27 **STON Miss Rosalie 13Y**
Red • Double Polled • BW: 76 • WW: 659

94% • Purebred • Female • February 8 2011 • PD142841 • STON13Y

CE	BW	WW	YW	MK	TM	GL	CED	SC
108	0.7	27	70	15	29	-1.4	100	0.2

SLC FREEDOM 178F ET
STON FREELANCE ET 6U _____
ATC GOLD STAR 96E

EV HUMDINGER 119M
STON MISS ROSALIE 21U _____
VV ROSALIE 98R

VAA LEACHMAN NEW DAY 205B
BB MISS 61Y
ATC GOLD STAR AUSTRIA 10A
ATC GOLD STAR 21B
WGG HUMBUG 72H
WGG JANET 75J
SLC HEAVY FIRE POWER 444M
ATC GOLD STAR PLD JUSTINE 6J

This will be our first Rosalie female to be offered publicly. This dark red beauty has been shown all summer by an 8 year old, and has added a few trophies to the shelf. If you are in need of a junior heifer, well this one is proven! She comes in a dark red, sexy package and is only offered because we have her older sister at home. Guaranteed to be a cow who will contribute to your bottom line.

28 **STON Ms Certain Glow 15Y**
Black • Double Polled • BW: 71 • WW: 724

94% • Purebred • Female • February 12 2011 • PD142831 • STON15Y

CE	BW	WW	YW	MK	TM	GL	CED	SC
107	-0.6	29	60	16	30	-2.2	99	0.2

SLC FREEDOM 178F ET
STON FREELANCE ET 6U _____
ATC GOLD STAR 96E

WGG PANTHER 66P
STON MS CERTAIN GLOW 19T _____
JRI MS CERTAIN GLOW 253M63

VAA LEACHMAN NEW DAY 205B
BB MISS 61Y
ATC GOLD STAR AUSTRIA 10A
ATC GOLD STAR 21B
WGG KICKAPOO BLACKIE 51K
WGG LOVE LE LADY 122L
SLC FREEDOM 178F ET
JRI MS PLD SHAKER 253E51 ET

The other debutante of our Certain Glow females, except in a black wrapper. You will notice the similarity in these girls; pretty, well balanced, feminine, performance orientated cattle built for longevity. There is no gamble here.

Lot 28 **STON Ms Certain Glow 15Y**



STONE GATE FARM

Stone Gate Fancy Females



Lot 29 **STON Miss Paradee 25Y**

29 **STON Miss Paradee 25Y**

Red • Double Polled • BW: 72 • WW: 722

94% • Purebred • Female • March 31 2011 • PD142839 • STON25Y

CE	BW	WW	YW	MK	TM	GL	CED	SC
109	-0.9	24	57	15	27	-1.8	100	0.3

SLC FREEDOM 178F ET
STON FREELANCE ET 6U
ATC GOLD STAR 96E

WGG PANTHER 66P
STON MISS BLACK PARADEE 24T-
JBM PARADEE 14N

VAA LEACHMAN NEW DAY 205B
BB MISS 61Y
ATC GOLD STAR AUSTRIA 10A
ATC GOLD STAR 21B
WGG KICKAPOO BLACKIE 51K
WGG LOVE LE LADY 122L
GKT BOO BOO 155E
JBM PARADE 146L

This end of March heifer is a beauty. She comes at you in a moderate, full bodied package and will certainly uphold the Paradee name in your herd. She is certainly classy enough to make the show string, and will be a front pasture type of female.

30 **STON Ms Blk Paradee 27X**

Black • Double Polled • BW: 67 • WW: 734 • YW: 1010

94% • Purebred • Female • March 28 2010 • PD135509 • STON27X

CE	BW	WW	YW	MK	TM	GL	CED	SC
112	-1.1	27	55	14	28	-2.0	101	0.3

SLC FREEDOM 178F ET
STON FREELANCE ET 6U
ATC GOLD STAR 96E

WGG PANTHER 66P
STON MISS BLACK PARADEE 24T-
JBM PARADEE 14N

VAA LEACHMAN NEW DAY 205B
BB MISS 61Y
ATC GOLD STAR AUSTRIA 10A
ATC GOLD STAR 21B
WGG KICKAPOO BLACKIE 51K
WGG LOVE LE LADY 122L
GKT BOO BOO 155E
JBM PARADE 146L

P/E April 18 to July 4, 2011 to CES Decca Outback 75S PR 117604

The older, darker sister to STON 25Y. This female is due mid-February to our new herd sire. The mother to these two females is the typical Paradee structure; moderate, feminine, an udder you can't fault, and fertility to rival the best of them! This is a sound investment!. Observed bred May 7th

Lot 30 **STON Ms Blk Paradee 27X**



Stone Gate Embryo Flushes

STONE GATE FARM



Lot 31 **VV Rosalie 98R**

31 *VV Rosalie 98R*

Red • Polled • BW: 88 • WW: 652 • YW: 989

94% • Purebred • Female • February 28 2005 • PD108917 • VV98R

CE	BW	WW	YW	MK	TM	GL	CED	SC
102	3.0	39	74	21	41	-1.2	102	0.2

DTJ HEAVY FIRE POWER ET 41H
 SLC HEAVY FIRE POWER 444M —
 SLC MISS ACES 151K

ATC GOLD STAR POLLED 5D
 ATC GOLD STAR PLD JUSTINE 6J —
 ATC GOLD STAR GENES 37G

NGAC REMITALL FIRE POWER 101F
 BB MISS 61Y
 DTJ HEAVY FIRE POWER ET 41H
 SLC MISS ACES 56G
 CZM FAIRYVALE XCELERATOR 1X
 ATC GOLD STAR ET 92A
 ATC GOLD STAR ET 64Y
 ATC GOLD STAR EVE 90E

Here she is, the one who started our Rosalie cow family. Her mother is the Carlson cow in the V&V herd we all know, ATC 6J. This female has not ever been to town, however many of her descendants have; but more importantly they ALWAYS make money! Thus far, her calves that have been sold have averaged over \$4500, multiply that by 6 and this flush lot is a license to print money. Outcross genetics, look at the udder, and we do not own anything more predictable and reliant. We are guaranteeing 6 embryos, and will work with the buyer to flush to the bull of choice. One exceptional option will be STON 7X, and he will be available sale day to view. There are many other outcross Canadian genetics that are options, please feel free to contact Stone Gate and we will be happy to assist in the decision. Oh, she is a Dam of Merit.

32 *VV Ms Molly 118S*

Red • Polled • BW: 86 • WW: 652 • YW: 1060

94% • Purebred • Female • February 23 2006 • PD116470 • VV118S

CE	BW	WW	YW	MK	TM	GL	CED	SC
109	0.7	41	72	25	46	-2.0	103	0.7

DEG MONAHAN 293M
 DEG PESO 286P
 DEG JYSSICA 286J

JRI PLD FREE AGENT 125J3
 TIP MISS MOLLY 44M
 TIP MISS KOOL 53K

JHL LCHMN Z138 8005D
 RCG DEG KARIN 293K
 DBC MR MODERATOR 9F
 DEG DAFFODIL 96D
 SLC FREEDOM 178F ET
 JRI MS PLD GRAND PRIX 125G3
 TIP GINGHAM 43G
 TKS VALLEY SUN GYPSY 13G

We first saw Molly at Lloydminster Stockade Roundup, and when she came into the barn she turned the heads of all cattlemen, no matter what their breed. We felt very fortunate to have purchased her after show won the Sweatheart Championship at Agribition in 2007. Since then, she has been National Reserve Senior Female, raised a Legends of the Fall Champion, herd sires, and replacement females anyone would be proud to own. Look at her, she is a tank with a presence. Perfect udder, massive square hip, the cleanest front end you will ever paint on a Gelbvieh, and delivers a dark red package every Spring. This is a cow family you will certainly hear more about in the future. Molly will calve late February and will be available to flush as soon as possible after. Again we will guarantee 6 embryos, and we are very happy to assist if needed with your sire choice selection. Molly is a Dam of Merit.

Lot 32 **VV Ms Molly 118S**



REFERENCE Sires



RS

SLC Roy Bean 141U

Red • Polled • BW: 95 • WW: 846 • YW: 1327

94% • Purebred • Bull • March 1 2008 • PD128362 • SLC141U

CE	BW	WW	YW	MK	TM	GL	CED	SC
102	3.3	45	80	13	36	-1.3	99	0.4

SLC FREEDOM 178F ET
 SLC MERV 12N
 SLC HICKORY GOAL 272K
 VG VALLEY BLACKJACK JR 37H
 SLC 247P
 SLC LONNIE 56L

VAA LEACHMAN NEW DAY 205B
 BB MISS 61Y
 BTI GAREY 2027G
 HHF HICKORY GOAL C54
 SLC BLACK JACK 48F ET
 VG VALLEY SC SWEETIE 80D
 SLC RAY-BAN 222H
 ATC GOLD STAR PLD BLACK 113J



RS

SLC Roy Bean 141U

He is a son of the National Champion SLC Merv 12N. He was Reserve Junior Champion at the 2009 National Show in Edmonton. 141U is very sound footed and thick made. His first calf crop is very impressive. SLC 141U is the sire of Severtson's feature heifer calves selling as well as his service also sells.



RS

SLC Touchdown 82W

Red • Polled • BW: 87 • WW: 785 • YW: 1311

94% • Purebred • Bull • April 17 2009 • PD136016 • SLC82W

CE	BW	WW	YW	MK	TM	GL	CED	SC
108	1.3	49	79	12	37	-1.7	102	0.3

SLC JAGERMEISTER 40R
 SLC TOUCHDOWN 71T
 SLC FREE EMPRESS 32H
 XZR C342 (STUBBY)
 SLC MISS BLACK LASS 120H
 SLC BLACK LASS 98D

TJB JAGERMEISTER 229M - ET
 SFL SLC CHOTEAU SUE 95H
 SLC FREEDOM 178F ET
 SLC 218F
 KCF BENNETT HORIZON 103X
 XZR 113A
 XZR 165A
 SLC BRADY'S GAL 41A



RS

SLC Touchdown 82W

SLC 82W was a high selling bull at this spring's bull sale to V&V Farms, Redcliff, AB. After they used him in their program, he saw breeding service in the SLC herd. He stems from the Black Lass cow family. His dam was the high selling lot at an SLC Sale selling for \$10,000 for half interest in 2003. She, also produced a Junior Heifer Calf Champion. His service sells.



RS

SLC Touchdown 166W

Black • Polled • BW: 90 • WW: 896 • YW: 1322

94% • Purebred • Bull • May 8 2009 • PD136058 • SLC166W

CE	BW	WW	YW	MK	TM	GL	CED	SC
104	3.2	51	80	12	38	-0.9	100	0.5

SLC JAGERMEISTER 40R
 SLC TOUCHDOWN 71T
 SLC FREE EMPRESS 32H
 SLC BLACK JACK 48F ET
 SLC EMPRESS 68N ET
 SLC 218F

TJB JAGERMEISTER 229M - ET
 SFL SLC CHOTEAU SUE 95H
 SLC FREEDOM 178F ET
 SLC 218F
 BTI BARCELONA 2057B
 BB MISS 61Y
 JBOB BLACK IMAGE 31Y
 YHR 54Y



RS

SLC Touchdown 166W

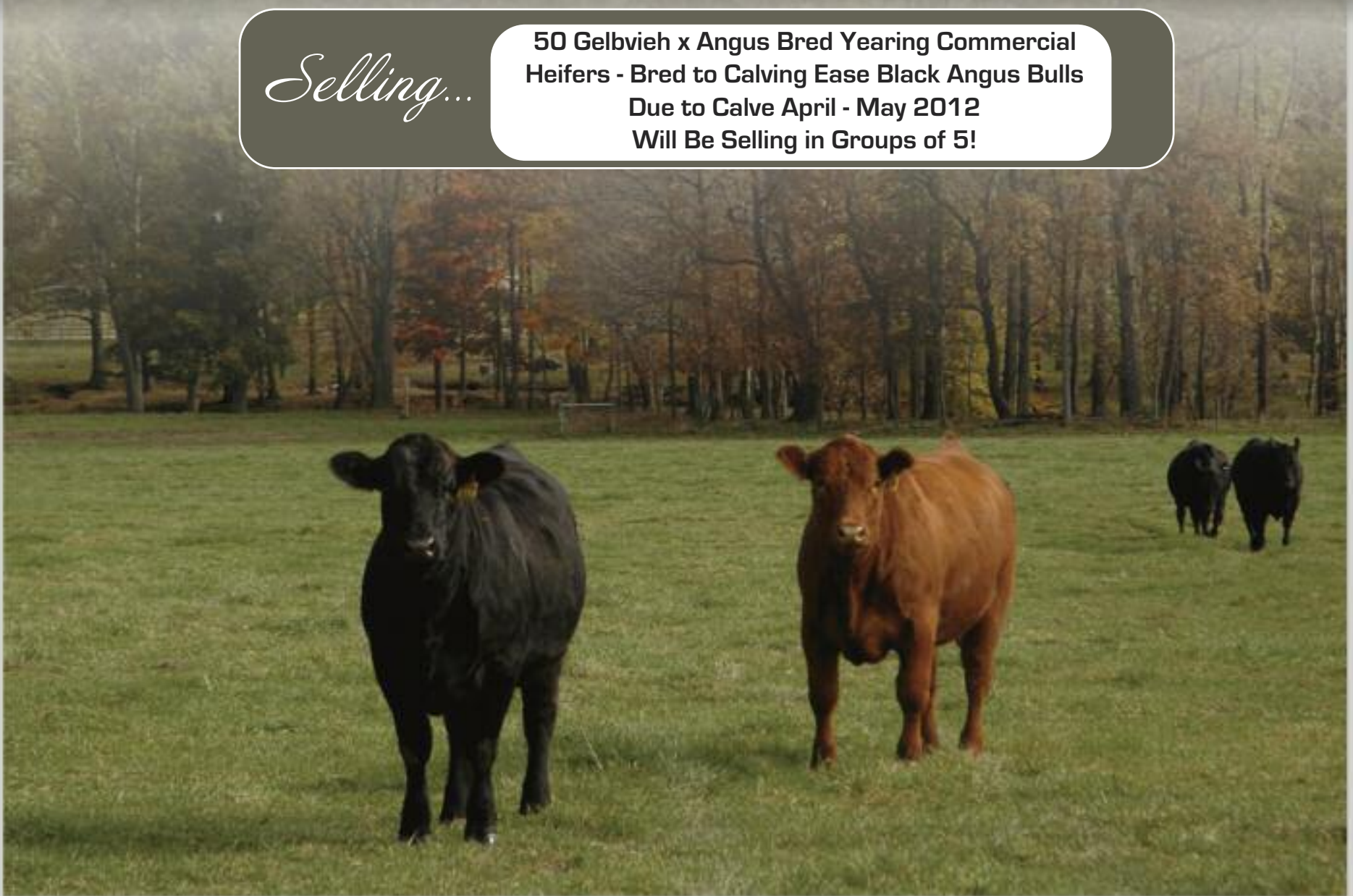
This calving ease Touchdown son will transmit loads of eye appeal into his calf crop. He was kept back to use on the yearling heifers at Severtson Land & Cattle. This black bull traces to 218F, a two-time National Champion, a great 54Y female.

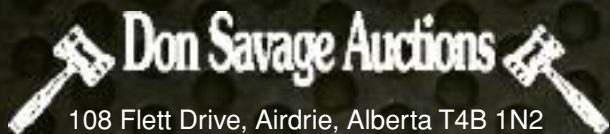
SEVERTSON LAND & CATTLE

Bred Commercial Females

Selling...

**50 Gelbvieh x Angus Bred Yearling Commercial
Heifers - Bred to Calving Ease Black Angus Bulls
Due to Calve April - May 2012
Will Be Selling in Groups of 5!**





108 Flett Drive, Airdrie, Alberta T4B 1N2
Phone: 403/948-3520 Fax: 403/948-2917
Website: www.donsavageauctions.com
Email: don@donsavageauctions.com

