

Saskatoon Gelbvieh Bull & Female Sale

10th Anniversary!!

Friday

March 26th. 2010

1:00 PM

**Saskatoon
Livestock Sales**



"Join in the excitement"



Darcy, Renee & Colt Hrebeniuk



Dave Hrebeniuk



Wade & Ruthie Davidson



Angus & Marlene Davidson



Darrell, Leila & Family

Welcome to our 10th Anniversary of the Saskatoon Gelbvieh Bull and Female Sale.

We would like to introduce to you our newest members of the sale, Stone Gate Farm - Darrell and Leila Hickman and family. They raise beautiful Gelbvieh cattle and we are pleased to have them in our sale.

As it is our 10th Anniversary Sale we are very pleased with the progression of the Gelbvieh breed. Gelbvieh is becoming a rising star in the cattle industry today. Good things are happening in the breed. Commercial Gelbvieh calf sales are rolling and feedlots are buying up the calves for their traits. High rate of gain, feed efficiency, high cutability and disposition are all key buzz words about the Gelbvieh feeder calves. Other cattlemen are buying up the Gelbvieh heifers for replacements in their herds as more of them are learning that Gelbvieh make great mama cows.

At the shows throughout the year Gelbvieh have been climbing the ladder with the big boys. At FarmFair 2009 in Edmonton, AB. Gelbvieh was the largest breed in representation and the pens of Gelbvieh calves in the commercial shows did very well. Gelbvieh also have been rising into the interbreed Championships at summer fairs and shows in Western Canada.

Each year we see more interest in the Gelbvieh breed. The reason for this is the traits of the Gelbvieh breed are fitting the demand that the cattle industry is now looking for. Cattlemen are looking to put more pounds and muscle back into their herds and they still want to keep the maternal traits. Gelbvieh genetics are fitting directly into that puzzle. Gelbvieh always had the traits and thanks to the purebred breeders over the years Gelbvieh now have the eye appeal too. Gelbvieh are primed and ready to help many cattlemen.

We have put together a great set of yearling and two-year-old bulls along with a dandy group of herd building replacement females for our 10th Anniversary Sale. We are working to keep the quality high for our buyers by using the best Gelbvieh genetics.

If you have any questions about our cattle, please give anyone of the breeders a call or call Don Savage Auctions.

We look forward to sharing our amazing "World of Gelbvieh" with you and your friends. Bring the family and have a fun day!

Sincerely,
The Saskatoon Gelbvieh Bull and Female Sale Consignors
Fir River Livestock
Stone Gate Farm
The Davidsons

 **Don Savage Auctions** 
108 Flett Drive, Airdrie, Alberta T4B 1N2
Phone: 403/948-3520 Fax: 403/948-2917
Website: www.donsavageauctions.com
Email: don@donsavageauctions.com



AUCTIONEER AND SALE MANAGER'S WELCOME

Welcome to the 10th Anniversary of the Saskatoon Gelbvieh Bull and Female Sale. I have had the pleasure of working with the excellent group of Gelbvieh breeders since the sale's inception. Even though some of the principal consignors have changed over the 10 year period all the people involved have always had the best interest of the sale and their customers foremost on their minds.

When you are dealing with the Davidson family, the Hrebeniuks or the Hickmans you can be rest assured that you will have the opportunity to buy some of the best Gelbvieh genetics in the Gelbvieh industry. They are always concerned with a quality sale offering and the benefits that their Gelbvieh cattle will offer both the commercial and purebred breeders alike.

You are welcome to visit their ranches to view the bulls before the sale. Be sure to visit www.gelbviehworld.com for more herd information or check the catalogue online at www.donsavageauctions.com.

The sale cattle will be on display March 25th at Saskatoon Livestock Sales and you are welcome to view the cattle at this time.

If you are interested in purchasing bulls on March 26th but are unable to be with us sale day please contact me and your order will be handled in a professional manner.

Yours truly,
Don Savage

THE 10th ANNUAL SASKATOON GELBVIEH BULL & FEMALE SALE

Friday, March 26, 2010 - 1:00 p.m.

at the Saskatoon Livestock Sales - Saskatoon, SK
10 km west of Saskatoon on Highway #14 (towards Biggar) - Watch for the sign.

Your Hosts

ANGUS & MARLENE DAVIDSON
and **WADE & RUTHIE DAVIDSON**
Box 385, Ponteix, SK S0N 1Z0
306/785-4512
Email: davidson421@yahoo.ca

FIR RIVER LIVESTOCK
Darcy & Renee Hrebeniuk
and David & Lynn Hrebeniuk
Box 379, Hudson Bay, SK S0E 0Y0
Phone: 306/865-2929 Cell: 306/865-7859
Email: firriver@xplornet.com

STONE GATE FARM
Darrell & Leila Hickman
RR #2, Vermilion, AB T9X 1Y7
780/581-0077 or 780/581-4510
Email: darrell.hickman@lakelandcollege.ca

*Please visit our website at www.gelbviehworld.com
Catalogue online at www.donsavageauctions.com*

OFFERING

- 35 Yearling Gelbvieh Herd Sire Prospects
- 17 Purebred Open Heifers
- 4 Two Year Old Purebred Bulls

** A number of individuals selling are Polled * All bulls have been semen tested*

Special Representatives

Scott Severtson, President
Cynthia Wirgau, President

Canadian Gelbvieh Assn.
Man-Sask Gelbvieh Assn.

Don Oberg - Ring Service
Bob Blacklock - Ring Service

780/678-6922
306/382-8088

GENERAL INFORMATION

TERMS OF SALE: Are cash or cheque at par, payable to the clerks of the Sale on sale day. U S funds will be accepted at the current rate of exchange. No release will be given until satisfactory settlement has been made. Full payment shall constitute a final sale and then registration papers will be transferred.

HEALTH: All Sale cattle meet the Canadian Health standards. Foreign buyers are responsible for knowing the current Health standards of their country.

GUARANTEE: All Sale cattle are guaranteed under the terms and conditions of Sale as recommended by the Canadian Gelbvieh Association.

MAIL BIDS: If you are unable to attend the Sale, but wish to make a purchase, please feel free to contact any of the Sales Staff or Don Savage Auctions and your order will be handled in a professional manner.

INSURANCE: Ownership commences to the purchaser as soon as the animal is sold. Insurance agents will be present sale day to look after your insurance requirements.

We would suggest you buy full mortality and fertility insurance for your new bull. A fertile bull can lose the ability to settle cattle therefore, good management of your breeding bulls over all health is very important especially throughout the breeding season. Our warranties do not cover bull injuries or sickness not apparent on sale day.

Although every precaution will be taken to protect the safety and comfort of the buyers neither Don Savage Auctions or the consignors assume any responsibility in these matters and disclaims any liability, legal or otherwise, in the event of an accident or loss of property.

The Bull Buyers Finance Plan

PLAN A — 8 months

4% Interest

1/3 Down payment
1/3 Due in 4 months
1/3 Due in 8 months

PLAN B — 12 months

6% Interest

1/4 Down payment
1/4 Due in 4 months
1/4 Due in 8 months
1/4 Due in 12 months

All bulls must be insured for the duration of the loan

*For further information and preapproval contact Marjorie at Stockman's Loan Company at least seven days prior to the sale.
Phone: (306) 931-0088*

Please join us for lunch prior to the sale

Sale Day Phones: 306-382-8088

Cell: 403-803-4434

Should you require any additional information
please feel free to contact any of the consignors or



108 Flett Drive, Airdrie, Alberta T4B 1N2

Phone: 403/948-3520 Fax: 403/948-2917

Website: www.donsavageauctions.com

Email: don@donsavageauctions.com

The Davidsons



Lot 1



Lot 2



Dam of Lot 2



1 **Double Polled Purebred Bull**
WDE DAVIDSON LOGAN 1W
 2/9/2009 WDE 1W PD133701

DVE DAVIDSON PLD ROMEO 73T DVE DAVIDSON PLD MARK 194P
 DVE DAVIDSON MS RED WRAP 81R
WDE DAVIDSON HANNA 12T DVE DAVIDSON MR RED 111R
 DSL DEEP SANDS RENU 59R

ACT. BW	ADJ. WW	ADJ. YW	CE	BW	WW	YW	MILK	TMAT	GEST	DCE	S.C.
70.0	819	1332	105	-.1 +	43	77	24	46	-1.3	102	.5

Davidson Logan is an eye appealing young herd sire prospect. Romeo sons are very consistent in their type; they carry meat with lots of style. This low birth weight individual will be a solid choice on sale day.

2 **Double Polled Purebred Bull**
WDE DAVIDSON POLLED HAVEN 2W
 2/14/2009 WDE 2W PD133702

DVE DAVIDSON PLD ROMEO 73T DVE DAVIDSON PLD MARK 194P
 DVE DAVIDSON MS RED WRAP 81R
AMD DAVIDSON MONICA 14H DVE DAVIDSON PLD CASH 2D
 AMD DAVIDSON 5C

ACT. BW	ADJ. WW	ADJ. YW	CE	BW	WW	YW	MILK	TMAT	GEST	DCE	S.C.
93.0	792	1316	105	2.6 +	37	70	20	39	-1.2	101	.4

Polled Haven is a tremendous beef bull. If the Davidson's needed a new herd sire this year he would not be leaving home. You will see all the traits that came down the line from the National Champion Bull - DVE Davidson Mark. Haven's volume, depth and style is sure to impress everyone sale day.

The Davidsons

3 Double Polled Purebred Bull WDE DAVIDSON RED FIREFOX 4W

2/23/2009 WDE 4W PD133706

DVE DAVIDSON PLD ROMEO 73T DVE DAVIDSON PLD MARK 194P
DVE DAVIDSON MS RED WRAP 81R

AMD DAVIDSON SAMANTHA 19M DVE DAVIDSON SUPERMAN 100J
AMD DAVIDSON RAYELLE 22F

ACT. BW	ADJ. WW	ADJ. YW	CE	BW	WW	YW	MILK	TMAT	GEST	DCE	S.C.
94.0	820	1381	104	2.8 I+	39	72	23	43	-1.1	103	.5

Davidson Red Firefox will attract purebred breeders and commercial cattlemen line a magnet. This dark red bull carries awesome genetics on both sides of his pedigree. His dam is a dark red Superman daughter with a perfect udder and his sire Romeo is a very well built bull that will make his mark in the years to come.



Lot 3

4 Polled Purebred Bull WDE DAVIDSON HOPKINS 9W

3/28/2009 WDE 9W PD133705

DVE DAVIDSON PLD ROMEO 73T DVE DAVIDSON PLD MARK 194P
DVE DAVIDSON MS RED WRAP 81R

WDE DAVIDSON DESTINY 4T JC PEMBINA MCLEOD 86M
AMD DAVIDSON SAMANTHA 19M

ACT. BW	ADJ. WW	ADJ. YW	CE	BW	WW	YW	MILK	TMAT	GEST	DCE	S.C.
82.0	874	1424	105	1.3 I+	37 I+	73	22	41	-1.2	102	.4

Hopkins likes to stand up, demanding your attention. He is very structurally correct. He has that mix of eye appeal and beef with a square hip and a pattern that will make a tremendous mold to create every bull in the pen.



Dam of Lot 3

5 Double Polled Purebred Bull BLB WDE DAVIDSON PLD WALKER

2/26/2009 BLB 30W PD133421

BLB GOODVIEW PLD STACKER 16S JCGR BAR GT LOUIE 2J
SPG PLD SUNNY PLAIN NIRA 44N

BLB GOODVIEW PLD LONA 12S AMD DAVIDSON SUPREME 4P
BBB BROOK LONA 253L

ACT. BW	ADJ. WW	ADJ. YW	CE	BW	WW	YW	MILK	TMAT	GEST	DCE	S.C.
90.0	750	1485	95	4.4 I+	42 I+	67 I+	18	39	-1.3	100	.3

Walker is a powerful son of Stacker. You will appreciate the loin and hind quarters this prospect has to offer. He is a real meat machine and is a half brother to the 2009 Sweetheart Classic Champion Female at Agribition.



Lot 4

6 Double Polled Purebred Bull BLB WDE DAVIDSON PLD WILSON

3/16/2009 BLB 35W PD133423

BLB GOODVIEW PLD STACKER 16S JCGR BAR GT LOUIE 2J
SPG PLD SUNNY PLAIN NIRA 44N

BLB GOODVIEW CLAIRE 32S BLB GOODVIEW PLD HOLMAN 14N
BBB CLAIRE 47F

ACT. BW	ADJ. WW	ADJ. YW	CE	BW	WW	YW	MILK	TMAT	GEST	DCE	S.C.
90.0	768	1552	93	4.8 I+	48 I+	77 I+	19	43	-9	98	.3

Wilson is another Stacker son who was purchased along side his dam from Goodview Gelbvieh. He is a strong topped individual with a terrific hair coat. His dam has a real neat udder. This genetic combination will give you added thickness and extra pounds in your calf crop.



Lot 5

The Davidsons



7 **Double Polled Purebred Bull**
AMD DAVIDSON ROCKABAR 10W
 4/7/2009 AMD 10W PD133700

DVE DAVIDSON PLD ROMEO 73T DVE DAVIDSON PLD MARK 194P
 DVE DAVIDSON MS RED WRAP 81R
 AMD DAVIDSON MAGGIE 2T DVE DAVIDSON SUPERMAN 100J
 AMD DAVIDSON MODELLE 9F

ACT. BW	ADJ. WW	ADJ. YW	CE	BW	WW	YW	MILK	TMAT	GEST	DCE	S.C.
89.0	898	1464	103	2.8 I+	37 I+	72	23	42	-1.2	103	.5

Rockabar carries lots of meat. You will see why Gelbvieh is noted to have a percentage of meat to bone ratio. Rockabar will sire very stout steers that will set the scale down come weaning time.

8 **Polled Purebred Bull**
AMD DAVIDSON GARNER 14W
 4/15/2009 AMD 14W PD133710

WDE DAVIDSON STOCKMAN 7T JC PEMBINA MCLEOD 86M
 DVE DAVIDSON MS PLD SASSY
 AMD DAVIDSON BLONDIE 27J DVE DAVIDSON MR HOPE 39G
 AMD DAVIDSON 5C

ACT. BW	ADJ. WW	ADJ. YW	CE	BW	WW	YW	MILK	TMAT	GEST	DCE	S.C.
95.0	856	1394	96	4.6 I+	36 I+	73	20	38	-.3	98	.2

Garner is a sharp looking fellow. He comes out of a cow that has raised a good calf every year. His sire, Stockman, added extra length into his offspring. Garner carries the genetics that are well known in the Gelbvieh breed.



Lot 9

9 **Polled Purebred Bull**
AMD DAVIDSON MAYWEATHER 16W
 5/14/2009 AMD 16W PD133711

WDE DAVIDSON STOCKMAN 7T JC PEMBINA MCLEOD 86M
 DVE DAVIDSON MS PLD SASSY
 AMD DAVIDSON TOP MODEL 4R DVE DAVIDSON SUPERMAN 100J
 AMD DAVIDSON 5C

ACT. BW	ADJ. WW	ADJ. YW	CE	BW	WW	YW	MILK	TMAT	GEST	DCE	S.C.
80.0	876	1476	96	3.9	37 I+	70	20	39	-.7	100	.2

Mayweather is a Stockman son that is doing wonders for his age. He is a good looking, deep bodied bull out of a terrific dam; a picture perfect female. Mayweather would be an awesome bull to raise replacement heifers with outstanding cow families on both sides of his pedigree. He should enhance your herd.



Dam of Lot 9



DVE Davidson Pld Romeo 73T

The Davidsons - Heifers

10 Double Polled Purebred Heifer WDE DAVIDSON SASKATOON CUTIE 3W

2/16/2009 WDE 3W PD133703

DVE DAVIDSON PLD ROMEO 73T

DVE DAVIDSON PLD MARK 194P
DVE DAVIDSON MS RED WRAP 81R

KCB PINTO CREEK MADONNA 87M

AMD DAVIDSON BLEND 11J
CVG CYPRESS VIEW EYEBROW 38E

ACT. BW	ADJ. WW	ADJ. YW	CE	BW	WW	YW	MILK	TMAT	GEST	DCE	S.C.
89.0	579	955	107	1.8 +	36	69	24	42	-9	106	.4

Her name fits her perfect. She is very attractive, deep bodied and ready to raise some good offspring. Her dam is one of Davidsons top females raising good calves every year. Make Davidson Cutie your pick on sale day.



Lot 10

11 Polled Purebred Heifer WDE DAVIDSON DREAM GIRL 5W

3/3/2009 WDE 5W PD133704

DVE DAVIDSON PLD ROMEO 73T

DVE DAVIDSON PLD MARK 194P
DVE DAVIDSON MS RED WRAP 81R

AMD DAVIDSON ALVERA 4S

DVE DAVIDSON SUPERMAN 100J
CVG CYPRESS VIEW JUANITA 43J

ACT. BW	ADJ. WW	ADJ. YW	CE	BW	WW	YW	MILK	TMAT	GEST	DCE	S.C.
90.0	557	900	104	3.0 +	34 +	64 +	23	40	-1.1	104	.4

This pretty young gal is a daughter of Davidson Romeo, a sire who puts lots of style into his heifers. His daughters would make a great start for a new breeder or a super addition to an established herd. Everyone would like to own their dream girl.



Dam of Lot 10 pictured with a maternal brother

12 Double Polled Purebred Heifer WDE DAVIDSON KARA 14W

4/7/2009 WDE 14W PD133707

DVE DAVIDSON PLD ROMEO 73T

DVE DAVIDSON PLD MARK 194P
DVE DAVIDSON MS RED WRAP 81R

AMD DAVIDSON DANCER 2S

DVE DAVIDSON SUPERMAN 100J
WRS MISS JU JU 2J

ACT. BW	ADJ. WW	ADJ. YW	CE	BW	WW	YW	MILK	TMAT	GEST	DCE	S.C.
82.0	628	1024	107	.9 +	37 +	68	23	42	-8	104	.5

Kara is a showy female who will become a neat broody cow. Angus purchased her grandam from the Fall Classic Sale in Virden, MB. She was the high selling open heifer that day.



Lot 11

13 Double Polled Purebred Heifer WDE DAVIDSON BEAUTYQUEEN 19W

4/21/2009 WDE 19W PD133708

DVE DAVIDSON PLD ROMEO 73T

DVE DAVIDSON PLD MARK 194P
DVE DAVIDSON MS RED WRAP 81R

DVE DAVIDSON MS PLD SASSY

MCFG MONTANA KID 50J ET
HAG 38G

ACT. BW	ADJ. WW	ADJ. YW	CE	BW	WW	YW	MILK	TMAT	GEST	DCE	S.C.
90.0	651	1080	104	2.2 +	46 +	81	23	46	-1.3	102	.5

Beauty Queen is destined to become an excellent brood cow. She is a grand daughter of the great National Champion Bull DVE Davidson Mark and out of an extremely good dam with a real pretty udder. The Davidsons are very pleased with Beauty Queen and find it very hard to part with her.



Lot 13

The Davidsons



Lot 15

14

Purebred Heifer
WDE DAVIDSON SARHA 20W

4/23/2009

WDE 20W

D133709

WDE DAVIDSON STOCKMAN 7T

JC PEMBINA MCLEOD 86M
DVE DAVIDSON MS PLD SASSY

WDE DAVIDSON JETTA 10S

DVE DAVIDSON SUPERMAN 100J
KCB PINTO CREEK MADONNA 87M

ACT. BW	ADJ. WW	ADJ. YW	CE	BW	WW	YW	MILK	TMAT	GEST	DCE	S.C.
90.0	597	963	99	3.8 I+	36 I+	69	23	41	-6	103	.2

Sarha is a Stockman daughter who comes from the same cow family as Davidson Saskatoon Cutie. Stockman is out of the same dam as Davidson Beauty Queen. Females like these will pass their quality genetics on down the line.

15

Double Polled Purebred Heifer
AMD DAVIDSON CINDERALLA 1W

1/13/2009

AMD 1W

PD133695

DVE DAVIDSON PLD ROMEO 73T

DVE DAVIDSON PLD MARK 194P
DVE DAVIDSON MS RED WRAP 81R

AMD DAVIDSON MILEY 18T

DVE DAVIDSON SUPERMAN 100J
CVG CYPRESS VIEW JUANITA 43J

ACT. BW	ADJ. WW	ADJ. YW	CE	BW	WW	YW	MILK	TMAT	GEST	DCE	S.C.
80.0	605	957	104	1.4 I+	38	69	23	42	-1.1	104	.4

Cinderalla is well on her way to becoming a beautiful cow. She is a classy looking heifer sired by Romeo, a bull who is putting his stamp on his offspring. Cinderalla comes highly recommended and the new owner is sure to be pleased with her.

16

Double Polled Purebred Heifer
AMD DAVIDSON TAMMY LYNNE 5W

3/12/2009

AMD 5W

PD133698

DVE DAVIDSON PLD ROMEO 73T

DVE DAVIDSON PLD MARK 194P
DVE DAVIDSON MS RED WRAP 81R

AMD DAVIDSON CARMEN 20K

JBM BILLY RAY 1H
WM MARTIN'S MISS G18

ACT. BW	ADJ. WW	ADJ. YW	CE	BW	WW	YW	MILK	TMAT	GEST	DCE	S.C.
94.0	547	890	104	2.8 I+	34 I+	62 I+	21	38	-8	102	.4

AMD 5W is an attractive, clean fronted heifer. She has a little different pedigree on her dam's side; who was sired by the People's Choice Runner up - Billy Ray. The Billy Ray sons that sold through the Saskatoon Sale sold very well. This gal's bull calves should have lots of meat.



17

Double Polled Purebred Heifer
AMD DAVIDSON LORRETA 7W

3/29/2009

AMD 7W

PD133699

DVE DAVIDSON PLD ROMEO 73T

DVE DAVIDSON PLD MARK 194P
DVE DAVIDSON MS RED WRAP 81R

AMD DAVIDSON STATLY LADY 23M

DVE DAVIDSON SUPERMAN 100J
AMD DAVIDSON CHELSEY 5H

ACT. BW	ADJ. WW	ADJ. YW	CE	BW	WW	YW	MILK	TMAT	GEST	DCE	S.C.
87.0	631	1048	101	2.1 I+	39 I+	75	24	44	-1.1	103	.6

AMD 7W looks much like AMD 5W. She comes out of a terrific line of good uddered females and she has the potential of producing excellent bulls like her Romeo brothers. Be sure to check her out on sale day.



Fir River Livestock



18

Double Polled Purebred Bull
FRL FIR RIVER WICK 2W ET

1/ 2/2009 FRL/2W PD133355ET

JRI PLD FREE AGENT 125J3 SLC FREEDOM 178F ET
JRI MS PLD GRAND PRIX 125G3
NGAC REMITALL MISS HERO 173J NGAC REMITALL PLD EXCEL 232E
BFL MISS HERO 493F

ACT. BW	ADJ. WW	ADJ. YW	CE	BW	WW	YW	MILK	TMAT	GEST	DCE	S.C.
80.0	566	1166	105	.7	32	63	16	32	-2.6	103	.1

FRL 2W is an excellent calving ease son of the great sire at Judd Ranch, Free Agent. Lots of hair and eye appeal.



DVE Davidson Pld Lucky 295P

19

Double Polled Purebred Bull
FRL FIR RIVER STEVE 3W ET

1/ 2/2009 FRL 3W PD133356ET

JRI PLD FREE AGENT 125J3 SLC FREEDOM 178F ET
JRI MS PLD GRAND PRIX 125G3
NGAC REMITALL MISS HERO 173J NGAC REMITALL PLD EXCEL 232E
BFL MISS HERO 493F

ACT. BW	ADJ. WW	ADJ. YW	CE	BW	WW	YW	MILK	TMAT	GEST	DCE	S.C.
80.0	530	1207	105	.7	32	63	16	32	-2.6	103	.1

Fir River Steve is a good haired, excellent structured, eye appealing calving ease bull.



Lot 19

20

Double Polled Purebred Bull
FRL FIR RIVER APACHE 10W

1/ 4/2009 FRL 10W PD133297

RID R COLLATERAL 2R JCGR BAR GT FLASHBACK 410M ET
JCGR BAR GT LONI 27N ET
DVE DAVIDSON PLD HELENA 91M DVE DAVIDSON RED WRAP 26G
DVE DAVIDSON MS PARTY 5F

ACT. BW	ADJ. WW	ADJ. YW	CE	BW	WW	YW	MILK	TMAT	GEST	DCE	S.C.
98.0	804	1235	102	2.7 I+	30	62	21	36	-1.5	102	.4

Apache is a calf that will flat out put the pounds on the your calf crop. He is extremely long, has great thickness, excellent scrotal development, and a tremendous top. Backed by a great cow.



Lot 20

Fir River Livestock



Lot 21

21

Double Polled Purebred Bull
FRL FIR RIVER WALLY 15W

1/ 4/2009

FRL 15W

PD133352

DVE DAVIDSON PLD LUCKY 295P

DVE DAVIDSON BACARDI 33M
DVE DAVIDSON MISS KITTY 32M

SBR 134N RACHEL 1T

SLC MASTER PLAN 134N
VCR MS RACHEL 5R

ACT. BW	ADJ. WW	ADJ. YW	CE	BW	WW	YW	MILK	TMAT	GEST	DCE	S.C.
75.0	672	1149	110	-1.1	37	67	16	35	-1.7	106	.2

Here is a nice put together bull that you can use on your herd. He is sired by Lucky, a bull who sired a class winning heifer at the 2009 Canadian Western Agribition.



Lot 22

22

Double Polled Purebred Bull
FRL FIR RIVER WOLF 17W

1/ 6/2009

FRL 17W

PD132342

JRI FULLY EXPOSED 270N83

JRI EXTRA EXPOSURE 285L71 ET
JRI MS LIFESAVER 270K73

FRL FIR RIVER MISS PEACH 9P

SLC FREEDOM 178F ET
DVE DAVIDSON PLD HELENA 91M

ACT. BW	ADJ. WW	ADJ. YW	CE	BW	WW	YW	MILK	TMAT	GEST	DCE	S.C.
98.0	907	1199	98	3.6	44	80	17	39	-2.3	102	.5

Wolf was one of our show bulls who was very competitive this fall. He is an extremely powerful bull with a big hip, wide top, and excellent scrotal. He will definitely put pounds on your calf crop. His dam is a nice feminine good uddered female.



Lot 23

23

Double Polled Purebred Bull
FRL FIR RIVER WOODY 21W

1/ 6/2009

FRL 21W

PD133294

JRI FULLY EXPOSED 270N83

JRI EXTRA EXPOSURE 285L71 ET
JRI MS LIFESAVER 270K73

TRF MNEME 12M

SLC FREEDOM 178F ET
GBV RAINBOW RIVER KAT 8K

ACT. BW	ADJ. WW	ADJ. YW	CE	BW	WW	YW	MILK	TMAT	GEST	DCE	S.C.
95.0	664	1279	101	3.1	45	81	17	40	-2.1	101	.4

FRL 21W is another excellent son of Fully Exposed with lots of volume and style. His calves will perform really well.



Lot 24

24

Double Polled Purebred Bull
FRL FIR RIVER BOMBER 23W

1/ 6/2009

FRL 23W

PD133363

DVE DAVIDSON PLD LUCKY 295P

DVE DAVIDSON BACARDI 33M
DVE DAVIDSON MISS KITTY 32M

FRL FIR RIVER TILEY 89T

VV RALLY LOU 16R
AR MAGGIE 46M

ACT. BW	ADJ. WW	ADJ. YW	CE	BW	WW	YW	MILK	TMAT	GEST	DCE	S.C.
82.0	660	1198	104	1.3	41	71	16	37	-1.7	105	.3

Bomber is an excellent, stylish, dark red bull with a large testicle measurement. FRL 23W is moderate made, good haired, with calving ease to boot.

Fir River Livestock



Grand Champion Pair at Saskatoon Fall Fair
 FRL Fir River Zahara 5U
 A Fully Exposed daughter sold at the 2008
 Canadian National Sale for \$30,000

25

Double Polled Purebred Bull **FRL FIR RIVER WENDELL 29W**

1/8/2009 FRL 29W PD132358

JRI FULLY EXPOSED 270N83 JRI EXTRA EXPOSURE 285L71 ET
 JRI MS LIFESAVER 270K73
DVE DAVIDSON PETERBILT 55N JRI PLD PETERBILT 285H65 ET
 ELC DESIRE 209D

ACT. BW	ADJ. WW	ADJ. YW	CE	BW	WW	YW	MILK	TMAT	GEST	DCE	S.C.
95.0	617	1217	101 21	3.2 34	36 22	67 14	16 09	34	-9 17	101 08	.4

FRL 29W is one of Fir River's favorites in the pen, a typical Fully Exposed son. He has lots of length, muscle, and testicle backed by a solid cow.



Lot 25

26

Double Polled Purebred Bull **FRL FIR RIVER WARHAWK 36W**

1/13/2009 FRL/36W PD133314

RID R COLLATERAL 2R JCGR BAR GT FLASHBACK 410M ET
 JCGR BAR GT LONI 27N ET
FRL FIR RIVER RENA 58R SLC MAGIC MAN 313K
 ZAR MISS MERIDETH 3M

ACT. BW	ADJ. WW	ADJ. YW	CE	BW	WW	YW	MILK	TMAT	GEST	DCE	S.C.
99.0	681	1281	92	5.8 1+	43	82	18	40	-9	95	.2

Warhawk is the most performance orientated bull in Hrebeniuk's pen. FRL 36W has lots of natural grow with a tremendous hair coat. His sire Collateral is a former National Champion Bull in Denver. A half brother last year sold in our sale to Sheldon Doerksen.



Lot 26

Fir River Livestock



Dam of Lot 28

27

Black Double Polled Purebred Bull
FRL FIR RIVER MR LESTER 39W

1/16/2009

FRL 39W

PD133333

WVR WEAVER LESTER 27L

BMW STAR BUCK
BMW CHABLIS

FRL FIR RIVER SISSY 19S ET

ELK CK BRONCO 411G
SFL SLC MS CENTENNIAL 188C

ACT. BW	ADJ. WW	ADJ. YW	CE	BW	WW	YW	MILK	TMAT	GEST	DCE	S.C.
99.0	810	1318	101	4.0 +	58	101	6	35	-.5	102	.3

This bull has been a stand out right from birth. He is long spined, heavy muscled with lots of scrotal, and great hair. His dam is an excellent uddered female backed by a great cow family.



Lot 28

28

Double Polled Purebred Bull
FRL FIR RIVER BEARCAT 40W

1/17/2009

FRL 40W

PD133307

FRL FIR RIVER SANTANA 62S

WVR WEAVER LESTER 27L
DVE DAVIDSON PETERBILT 7N

TSSC TWIN STAR MISS NADIA 770

KFW POLLED DELETOR 32D
TSSC TWIN STAR 670H

ACT. BW	ADJ. WW	ADJ. YW	CE	BW	WW	YW	MILK	TMAT	GEST	DCE	S.C.
98.0	838	1315	98	3.8 +	49	85	12	37	-.5	99	.2

Bearcat is a stout, good haired, moderate framed bull that is full of red meat. 40W's dam is a model cow who always weans off an outstanding calf. Bearcat will definitely add pounds to your calf crop. Lots of useable traits here.



Lot 29

29

Double Polled Purebred Bull
FRL FIR RIVER WESTBROOK 47W

1/23/2009

FRL 47W

PD133303

RID R COLLATERAL 2R

JCGR BAR GT FLASHBACK 410M ET
JCGR BAR GT LONI 27N ET

TSSC TWIN STAR NELPHIA 484N

TSSC TWIN STAR KENNETH 581K
TSSC TWIN STAR KELPIE 483K

ACT. BW	ADJ. WW	ADJ. YW	CE	BW	WW	YW	MILK	TMAT	GEST	DCE	S.C.
90.0	622	1114	100	2.1 +	33	62	17	34	-.8	99	.2

Here is another excellent Collateral son. He is smooth shouldered with a great hair coat and will catch your eye.



Lot 30

30

Double Polled Purebred Bull
FRL FIR RIVER WRANGLER 53W

2/ 2/2009

FRL 53W

PD132353

JRI FULLY EXPOSED 270N83

JRI EXTRA EXPOSURE 285L71 ET
JRI MS LIFESAVER 270K73

FRL FIR RIVER PLATINUM 15P

EGL GARTH J040 ET
DTJ LADY MARY ANN 43L

ACT. BW	ADJ. WW	ADJ. YW	CE	BW	WW	YW	MILK	TMAT	GEST	DCE	S.C.
94.0	662	1262	98 21	4.2 34	49 21	88 15	16 09	41	-2.2 21	103 09	.5

Wrangler is another Fully Exposed son, extremely long, wide topped, and loads of testicle. 53W's dam always produces the keepers. Sold a half brother last year to John Debeal.

Fir River Livestock

31

Double Polled Purebred Bull FRL FIR RIVER WARREN 57W

2/ 3/2009 FRL 57W PD133313

RID R COLLATERAL 2R

JCGR BAR GT FLASHBACK 410M ET
JCGR BAR GT LONI 27N ET

FRL FIR RIVER SUSIE Q 52R ET

JRI PLD GRAND PRIMO 43G5
ATC GOLD STAR TINA 210H

ACT. BW	ADJ. WW	ADJ. YW	CE	BW	WW	YW	MILK	TMAT	GEST	DCE	S.C.
94.0	685	1300	100	3.3 +	39	73	21	41	-8	102	.3

Warren is another Collateral son that has absolutely blossomed in his growth and development. Strong and solid, this guy will get the job done.



Lot 31

32

Double Polled Purebred Bull FRL FIR RIVER HEATLEY 68W (TWIN)

2/ 7/2009 FRL 68W PD133320

JRI PLD GRAND PRIX 53G

JRI PLD GRAND PRIX ET
JRI MS PLD SUMMIT 53A41

FRL FIR RIVER CHERRY 73R

JCGR BAR GT LOUIE 2J
CCF GREAT LAKES KATIE 42K

ACT. BW	ADJ. WW	ADJ. YW	CE	BW	WW	YW	MILK	TMAT	GEST	DCE	S.C.
80.0	799	1322	102	2.1	38	65	17	36	-.1	99	.8

68W is an awesome haired, free moving, deep sided, big topped herd sire prospect. This bull will definitely stouten up your calf crop. 68W is backed by a flawless dam whose son sold last year to V & V Farms.



Lot 32

33

Double Polled Purebred Bull FRL FIR RIVER MARLEAU 69W (TWIN)

2/ 7/2009 FRL 69W PD133354

JRI PLD GRAND PRIX 53G

JRI PLD GRAND PRIX ET
JRI MS PLD SUMMIT 53A41

FRL FIR RIVER CHERRY 73R

JCGR BAR GT LOUIE 2J
CCF GREAT LAKES KATIE 42K

ACT. BW	ADJ. WW	ADJ. YW	CE	BW	WW	YW	MILK	TMAT	GEST	DCE	S.C.
80.0	724	1232	102	1.3 +	38	65	17	36	-.1	99	.3

FRL 69W, a real chunk, has lots of muscle shape and volume. These Grand Prix sons really impress us. Excellent scrotal and a bull with a ton of potential.



Lot 33

*Arrive early, inspect the cattle
& be our guests for
lunch prior to the sale*



Dam of Lots 32 & 33

Fir River Livestock



Lot 34

34

Black Double Polled Purebred Bull
FRL FIR RIVER WILEY 83W

2/10/2009

FRL/83W

PD133337

OZZ IDEAL DIRECTION 8N

MRCO NEW DIRECTION 905J
OZZ IDEAL SWEET 56L

FRL FIR RIVER SUGAR 39S

JCGR BAR GT LOUIE 2J
CVG CYPRESS VIEW GERRISA 29G

ACT. BW	ADJ. WW	ADJ. YW	CE	BW	WW	YW	MILK	TMAT	GEST	DCE	S.C.
98.0	785	1462	103	4.1 +	54 +	100 +	21	48	-.2	103	.4 +

Wiley is an excellent, long spined, big topped, good haired black bull. His mother is a great uddered attractive female.



Lot 35

35

Black Double Polled Purebred Bull
FRL FIR RIVER TARHEAD 84W

2/11/2009

FRL 84W

PD132345

XXB BIG'N'RICH 911P ET

XXB TITUS 880K
EGL G565

DVE DAVIDSON MISS JIM 26P

DVE DAVIDSON PLD BLK JIM 6L
DVE DAVIDSON MS MONTANA 18L

ACT. BW	ADJ. WW	ADJ. YW	CE	BW	WW	YW	MILK	TMAT	GEST	DCE	S.C.
95.0	774	1112	103 01	3.4 34	42 23	65 +	19 10	40	-.7 01	104 01	.4 +

Tarhead is a moderate, well balanced, free in his movement kind of bull. 84W is really tidy in his lines and backed by a flawless dam. 84W was part of Fir River's show team at Agribition 2009. He is acceptable for use on heifers.



Lot 36

36

Scurred Polled Purebred Bull
FRL FIR RIVER WINSLOW 93W

2/21/2009

FRL 93W

PD132357

FRL FIR RIVER SANTANA 62S

WVR WEAVER LESTER 27L
DVE DAVIDSON PETERBILT 7N

DEG NEVADA 376N

MMM CALBERTA RESOURCE 8307H
DEG ELYSSA 0178E

ACT. BW	ADJ. WW	ADJ. YW	CE	BW	WW	YW	MILK	TMAT	GEST	DCE	S.C.
96.0	673	1176	99 18	2.9 32	45 +	85	16 09	39	-.6 10	100 07	.2

Winslow is a moderate bull that is very nicely put together. He has loads of dimension, and is strong and solid. Great pedigree on this guy. Be sure to check him out sale day.



Lot 37

37

Double Polled Purebred Bull
FRL FIR RIVER HORNET 110W

4/ 3/2009

FRL 110W

PD133319

FRL FIR RIVER SANTANA 62S

WVR WEAVER LESTER 27L
DVE DAVIDSON PETERBILT 7N

DVE DAVIDSON MS TEQUILA 80R

DVE DAVIDSON TEQUILA 29N
DVE DAVIDSON MS REDWRAP 67M

ACT. BW	ADJ. WW	ADJ. YW	CE	BW	WW	YW	MILK	TMAT	GEST	DCE	S.C.
89.0	754	1123	101	2.8 +	51 +	87	12	38	-.7	100	.4

110 W is the youngest bull in Fir River's offering. Hornet has lots of balance, is good haired, and is a free moving type of bull. Doing everything right at this stage.

Fir River Livestock - Two Year Old Bulls



38 Double Polled Purebred Bull
FRL FIR RIVER BECKHAM 78U
 2/10/2008 FRL 78U PD127889

JRI FULLY EXPOSED 270N83 JRI EXTRA EXPOSURE 285L71 ET
 JRI MS LIFESAVER 270K73
 FRL FIR RIVER ROYAL 54R ET JCGR BAR GT ICON 1115F
 SLC ANITA 19F ET

ACT. BW	ADJ. WW	ADJ. YW	CE	BW	WW	YW	MILK	TMAT	GEST	DCE	S.C.
95.0	761	1223	99 21	4.6 34	51 28	86 21	19 11	45	-5 19	103 10	.6 27

Here is a bull with some extra age and size to cover a lot more cows this breeding season. 78U will add performance to your calf crop.

39 Double Polled Purebred Bull
FRL FIR RIVER MANCHESTER 92U
 3/1/2008 FRL 92U PD127898

DVE DAVIDSON PLD LUCKY 295P DVE DAVIDSON BACARDI 33M
 DVE DAVIDSON MISS KITTY 32M
 DVE DAVIDSON MS JULIO 53R LCS DAVIDSON PLD JULIO 432J
 DVE DAVIDSON MS PD BABE 108N

ACT. BW	ADJ. WW	ADJ. YW	CE	BW	WW	YW	MILK	TMAT	GEST	DCE	S.C.
85.0	714	1129	109 18	.4 33	37 24	60 10	17 07	36	-1.4 06	105 04	.8 23

92U is a stylish, stout, calving ease bull. His dam is an excellent producing cow with an outcross pedigree.



Lot 40



Lot 39

40 Black Polled Purebred Bull
FRL FIR RIVER WISE GUY 97U
 3/6/2008 FRL 97U D127947

DVE DAVIDSON PLD LUCKY 295P DVE DAVIDSON BACARDI 33M
 DVE DAVIDSON MISS KITTY 32M
 DEG EBONY 164E MWH BEEP 1B
 AG MISS GG 105Z

ACT. BW	ADJ. WW	ADJ. YW	CE	BW	WW	YW	MILK	TMAT	GEST	DCE	S.C.
90.0	678	1093	106 19	1.0 35	31 25	53 12	16 10	32	-1.6 10	103 07	.3 22

97U is a moderate black 2-year-old calving ease bull. He will work really well on that big pen of heifers.

41 Double Polled Purebred Bull
FRL FIR RIVER SPARKPLUG 117U
 5/10/2008 FRL 117U PD127834

FRL FIR RIVER SANTANA 62S WWR WEAVER LESTER 27L
 DVE DAVIDSON PETERBILT 7N
 ATC GOLD STAR 96E ATC GOLD STAR AUSTRIA 10A
 ATC GOLD STAR 21B

ACT. BW	ADJ. WW	ADJ. YW	CE	BW	WW	YW	MILK	TMAT	GEST	DCE	S.C.
93.0	691	1065	99 19	2.9 32	42 20	82 14	15 11	36	-3 13	100 09	.1 1

Here is a good, long spined, good haired bull with some extra age under him to help you cover more cows this breeding season.

Fir River Livestock - Heifers

42

Double Polled Purebred Heifer FRL FIR RIVER WIGGLES 6W

1/3/2009 FRL 6W PD132360

JRI FULLY EXPOSED 270N83

JRI EXTRA EXPOSURE 285L71 ET
JRI MS LIFESAVER 270K73

KCB PINTO CREEK MISS NIBBS

MGF GIZ'S BIG KING 7K ET
CVG CYPRESS VIEW HILARY 24H

ACT. BW	ADJ. WW	ADJ. YW	CE	BW	WW	YW	MILK	TMAT	GEST	DCE	S.C.
90.0	556	0	102 20	3.0 33	40 21	70 14	23 09	43	-1.4 16	102 08	.4

FRL 6W is an excellent Fully Exposed daughter out of a moderate dam that always weans off big calves. Lots of volume.

43

Double Polled Purebred Heifer FRL FIR RIVER REBECA 13W

1/4/2009 FRL 13W PD133332

JRI FULLY EXPOSED 270N83

JRI EXTRA EXPOSURE 285L71 ET
JRI MS LIFESAVER 270K73

FRL FIR RIVER SALSA 18S

JCGR BAR GT LOUIE 2J
HDS LACEY 27L

ACT. BW	ADJ. WW	ADJ. YW	CE	BW	WW	YW	MILK	TMAT	GEST	DCE	S.C.
85.0	533	0	100	3.0 I+	44	78	18	40	-1.5	103	.5

You just cannot say enough about these Fully Exposed females. Stylish, lots of balance and volume. The first Fully Exposed daughters are calving this year at Fir River and have excellent udders. A Fully Exposed daughter sold to V & V Farms in 2008 for \$30,000.00.

44

Double Polled Purebred Heifer FRL FIR RIVER MS LESTER 50W

1/30/2009 FRL 50W PD133318

WVR WEAVER LESTER 27L

BMW STAR BUCK
BMW CHABLIS

DVE DAVIDSON MS JULIO 48R

LCS DAVIDSON PLD JULIO 432J
DVE DAVIDSON MISS 55J

ACT. BW	ADJ. WW	ADJ. YW	CE	BW	WW	YW	MILK	TMAT	GEST	DCE	S.C.
90.0	570	0	100	3.1 I+	56	94	12	40	-4	100	.2

FRL 50W is only the second Lester daughter that Fir River have ever offered for sale. Hrebeniuks really like these cows. 50W has lots of hair, is dark red, and has tons of potential.



Lot 45

45

Black Polled Purebred Heifer FRL FIR RIVER BLACK MISS 51W

1/30/2009 FRL 51W PD133335

FRL FIR RIVER SANTANA 62S

WVR WEAVER LESTER 27L
DVE DAVIDSON PETERBILT 7N

FRL FIR RIVER SHADOW 23S ET

LWHF FEARLESS 25K
SFL SLC MS CENTENNIAL 188C

ACT. BW	ADJ. WW	ADJ. YW	CE	BW	WW	YW	MILK	TMAT	GEST	DCE	S.C.
90.0	666	0	102	3.2 I+	47	81	13	37	-5	101	.3

51W is an excellent high production brood cow prospect. There is loads of potential in this heifer.

46

Double Polled Purebred Heifer FRL FIR RIVER SWALE 54W

2/2/2009 FRL 54W PD133286

FRL FIR RIVER SANTANA 62S

WVR WEAVER LESTER 27L
DVE DAVIDSON PETERBILT 7N

CCF GREAT LAKES KATIE 42K

KCF BENNETT C333
WGG MISS WIND 109C

ACT. BW	ADJ. WW	ADJ. YW	CE	BW	WW	YW	MILK	TMAT	GEST	DCE	S.C.
95.0	534	0	98	4.5 I+	50	89	17	42	.5	101	.3

This heifer comes from a cow family that flat out produces. Fir River have kept every female from the CCF 42K cow. Now is your opportunity to own one.



Lot 47

47

Double Polled Purebred Heifer FRL FIR RIVER WYNN 71W

2/7/2009 FRL 71W PD133338

RID R COLLATERAL 2R

JCGR BAR GT FLASHBACK 410M ET
JCGR BAR GT LONI 27N ET

FRL CHERRY JUBILEE 43S

JCGR BAR GT LOUIE 2J
OHF PLD JADE 14N

ACT. BW	ADJ. WW	ADJ. YW	CE	BW	WW	YW	MILK	TMAT	GEST	DCE	S.C.
85.0	621	0	100	2.5 I+	39	75	19	39	-1.5	100	.3

This heifer is deep middled, clean in her lines, dark red, with a great hair coat. She would make an excellent junior project. Collateral females are fantastic.

Fir River Livestock - Heifers

48

Black Polled Purebred Heifer
FRL FIR RIVER VENUS 94W

2/21/2009 FRL 94W PD133324

FRL FIR RIVER SANTANA 62S

WVR WEAVER LESTER 27L
 DVE DAVIDSON PETERBILT 7N

DVE DAVIDSON MS JIM 130R

DVE DAVIDSON PLD BLK JIM 6L
 DVE DAVIDSON MISS JULIO 126N

ACT. BW	ADJ. WW	ADJ. YW	CE	BW	WW	YW	MILK	TMAT	GEST	DCE	S.C.
85.0	512	0	99	3.2 +	51	86	19	45	-8	101	.3

Here is a sassy black heifer for your liking; great hair and very eye appealing.



Lot 48

49

Double Polled Purebred Heifer
FRL FIR RIVER VANITY 98W

2/23/2009 FRL 98W PD133321

FRL FIR RIVER SANTANA 62S

WVR WEAVER LESTER 27L
 DVE DAVIDSON PETERBILT 7N

WTM TWIN STAR ROZA 326R

RWG NUFF-SAID 103N
 WTM TWIN STAR MARMALADE 42M

ACT. BW	ADJ. WW	ADJ. YW	CE	BW	WW	YW	MILK	TMAT	GEST	DCE	S.C.
90.0	546	0	98	3.7 +	51	92	12	38	-5	99	.3

Vanity is an excellent, well balanced, correct brood cow prospect. Her dam is a moderate excellent uddered female.

50

Double Polled Purebred Heifer
FRL FIR RIVER ALEXUS 109W

6/22/2009 FRL 109W PD133323

FRL FIR RIVER SANTANA 62S

WVR WEAVER LESTER 27L
 DVE DAVIDSON PETERBILT 7N

FRL FIR RIVER RADIANCE 80R

MGF CODE RED 6L
 CVG CYPRESS VIEW GERRISA 29G

ACT. BW	ADJ. WW	ADJ. YW	CE	BW	WW	YW	MILK	TMAT	GEST	DCE	S.C.
90.0	914	0	99	4.0 +	49	89	18	43	-6	102	.2

FRL 109W is another excellent brood cow prospect. 109W will be an easy keeping, hard working cow.



FRL Fir River Santana 62S



DVE Davidson Peterbilt 7N at Agribition 2009



Stone Gate Farm



Lot 51

51

Double Polled Purebred Bull
STON WINSTON 6W

2/ 4/2009

STON 6W

PD131704

EV HUMDINGER 119M

WGG HUMBUG 72H
WGG JANET 75J

STON MS CERTAIN GLOW 2T ET

NGAC REMITALL PLD EXCEL 232E
JRI MS CERTAIN GLOW 253M63

ACT. BW	ADJ. WW	ADJ. YW	CE	BW	WW	YW	MILK	TMAT	GEST	DCE	S.C.
82.0	778	1402	100 19	3.6 30	47 23	87 I+	18 07	42	-8 10	101 07	.3 05

STON 6W is deep sided, thick and as much bull as you will want. This rascal has been mothered by a "Certain Glow" cow family first calver who has certainly pulled her weight. This top notch cow family has always been about performance and here is another fine example.



Lot 52

52

Double Polled Purebred Bull
STON WINDERUP 7W

2/ 4/2009

STON 7W

PD131706

EV HUMDINGER 119M

WGG HUMBUG 72H
WGG JANET 75J

STON BELLA 10T

JRI PLD FREE AGENT 125J3
JBM BELLA 9D

ACT. BW	ADJ. WW	ADJ. YW	CE	BW	WW	YW	MILK	TMAT	GEST	DCE	S.C.
78.0	784	1317	104 20	2.1 32	43 24	74 I+	19 08	41	-1.4 12	101 07	.4 06

Cow Power Deluxe! This chunk is from the Bella cow family, known to have established a large portion of the JBM herd in the final decade, and the majority of the Stone Gate Farm herd from inception. You should only start with good ones! Exceptional disposition, and if you need to moderate and fix udder issues, here is your guy. He does not give up any quality. 7W will sire heavy steer calves, and pretty, pretty replacement females.



Lot 53

53

Black Double Polled Purebred Bull
STON BLACK RENEGADE 8W

2/ 4/2009

STON 8W

PD131697

EV HUMDINGER 119M

WGG HUMBUG 72H
WGG JANET 75J

STON PLD BLACK JASSY 57P

JCGR BAR GT EINSTEIN 1025F
ATC GOLD STAR PLD JASSY 16J

ACT. BW	ADJ. WW	ADJ. YW	CE	BW	WW	YW	MILK	TMAT	GEST	DCE	S.C.
92.0	720	1036	97 18	4.1 32	48 24	75 I+	17 08	41	-2 11	99 06	.2 06

This calf was mothered by the same dam who produced STON Secret Weapon. Secret Weapon was purchased by Davidson Gelbvieh of Ponteix, SK and went on to sire the 2009 National Western Stock Show Gelbvieh Bull Futurity Champion. He has a sister in the Stone Gate herd that is certainly going to follow in his footsteps. Here is power, performance and predictability.



Lot 54

54

Black Double Polled Purebred Bull
STON BLACK PANTHER 11W

2/ 8/2009

STON 11W

PD131701

STON TRAVELER 7T ET

NGAC REMITALL PLD EXCEL 232E
JRI MS CERTAIN GLOW 253M63

STON MISS PARADEE 2S

WGG PANTHER 66P
JBM PARADEE 14N

ACT. BW	ADJ. WW	ADJ. YW	CE	BW	WW	YW	MILK	TMAT	GEST	DCE	S.C.
67.0	718	1281	107 17	.0 31	37 23	69 I+	20 08	39	-2.1 11	103 07	.4 06

If you are in the market for a black calving ease bull, here he is. 11W is the second calf from STON 2S, and Stone Gate kept the first one as a herd sire. This calf was raised by a Paradee cow family member; they have produced an Agribition Sweetheart Champion, a \$4500 flush, and 3 purebred herd sires in the last few years. You will want to keep every female he produces.

Stone Gate Farm

55

Double Polled Purebred Bull
STON WILSON 12W

2/17/2009

STON 12W

PD133740

STON TRAVELER 7T ET

NGAC REMITALL PLD EXCEL 232E
JRI MS CERTAIN GLOW 253M63

ATC GOLD STAR PLD JULIE 80J

GKT BOO BOO 155E
ATC GOLD STAR 120B

ACT. BW	ADJ. WW	ADJ. YW	CE	BW	WW	YW	MILK	TMAT	GEST	DCE	S.C.
86.0	665	1534	100	2.5	41	74	18	39	-2.1	101	.3

STONE 12W was raised by an Agribition Sweetheart Champion and a homegrown herd sire we call Traveler from the "Certain Glow" cow family. Traveler is co-owned with top notch commercial cattlemen in Duncan Carey. Consistency and longevity are what 12W will deliver; ask to see the picture of his mother. She is a "J" model cow with an udder that would make any 2-year-old shudder.



Lot 55

56

Double Polled Purebred Bull
STON WELLS FARGO 17W

3/ 8/2009

STON 17W

PD131693

STON TRAVELER 7T ET

NGAC REMITALL PLD EXCEL 232E
JRI MS CERTAIN GLOW 253M63

ATC GOLD STAR PLD JASSY 16J

ATC GOLD STAR POLLED 5D
ATC GOLD STAR PLD GEM 158G

ACT. BW	ADJ. WW	ADJ. YW	CE	BW	WW	YW	MILK	TMAT	GEST	DCE	S.C.
93.0	766	1246	92 19	4.2 33	46 24	80 11	13 11	36	-2.6 14	94 08	.0 08

This is a definite herd sire candidate, mothered by our original "Jazzy" cow. This cow has always produced at the top of the herd, and you are sure to agree when you see 17W. Maternal brother to 57P, the mother to 8W and Secret Weapon. Numerous purebred herd sires and replacement females have been produced by this cow.



Lot 56

Please bring this catalogue with you to the sale

Bull Breeding Guarantee

All guarantees are between the buyer and the seller.

All bulls offered and sold, except calves at side, are guaranteed breeders irrespective of age. All bulls after reaching the age of 15 months must be capable of settling 7 head or 75% of the eligible normal healthy breeding age females he is running with for a 90 day period, whichever is the lesser.

No guarantee regarding the freezing ability of a bull's semen is made or implied in the sale of a bull unless covered specifically in a written contract.

In the case of a complaint regarding a bull's breeding guarantee the buyer wishes to enforce the provisions of the Code shall report the same in writing to the seller enclosing a report prepared by a licensed veterinarian within 6 months of purchase or the time the bull reaches the age of 15 months whichever occurs later. The bull shall be returned to the seller at the buyer's expense. The seller may replace the bull with a bull of equal quality or refund the purchaser's price of the bull or he may attempt to prove the bull a breeder under the terms of this clause within 6 months. If the bull is proven to be a breeder within the 6 months provided he shall be returned by the seller to the buyer and the buyer's expense. If he is not proven to be a breeder then replacement or at the option of a seller a refund is mandatory. Under no circumstances will a seller be liable for more than the purchase price of the animal sold.

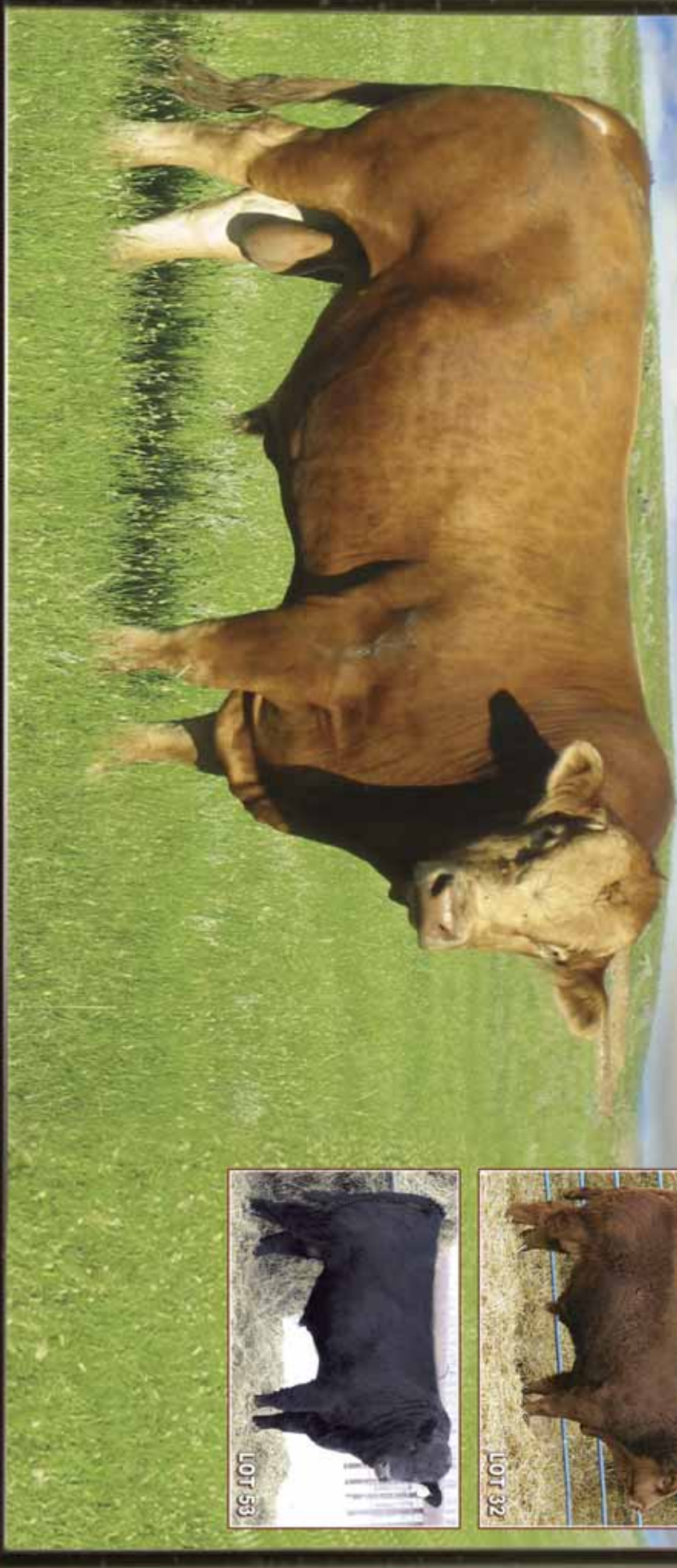


Don Savage Auctions



108 Felt Drive, Airdrie, Alberta T4B 1N2
Phone: 403/948-3520 Fax: 403/948-2917
www.donsavageauctions.com
e-mail: don@donsavageauctions.com

10th Anniversary!



CANADA POSTES
POST CANADA



Postage paid
Addressed
Admail
No 4385980
AIRDRIE, Alberta

Post payé
Médiposte
avec adresse
AIRDRIE, Alberta